

# Product Datasheet

## Emerin Antibody (CL0203) - BSA Free NBP2-52877

Unit Size: 0.1 ml

Store at 4C short term. Aliquot and store at -20C long term. Avoid freeze-thaw cycles.

[www.novusbio.com](http://www.novusbio.com)



[technical@novusbio.com](mailto:technical@novusbio.com)

### Publications: 1

Protocols, Publications, Related Products, Reviews, Research Tools and Images at:  
[www.novusbio.com/NBP2-52877](http://www.novusbio.com/NBP2-52877)

Updated 12/2/2025 v.20.1

Earn rewards for product  
reviews and publications.

Submit a publication at [www.novusbio.com/publications](http://www.novusbio.com/publications)

Submit a review at [www.novusbio.com/reviews/destination/NBP2-52877](http://www.novusbio.com/reviews/destination/NBP2-52877)



**NBP2-52877**

Emerin Antibody (CL0203) - BSA Free

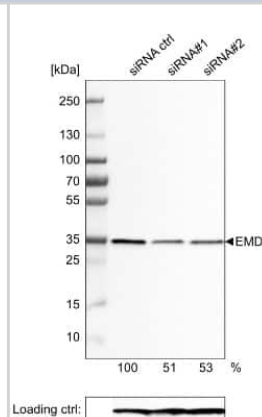
Product Information	
<b>Unit Size</b>	0.1 ml
<b>Concentration</b>	Concentrations vary lot to lot. See vial label for concentration. If unlisted please contact technical services.
<b>Storage</b>	Store at 4C short term. Aliquot and store at -20C long term. Avoid freeze-thaw cycles.
<b>Clonality</b>	Monoclonal
<b>Clone</b>	CL0203
<b>Preservative</b>	0.02% Sodium Azide
<b>Isotype</b>	IgG1
<b>Purity</b>	Protein A purified
<b>Buffer</b>	PBS (pH 7.2) and 40% Glycerol

Product Description	
<b>Description</b>	Novus Biologicals Mouse Emerin Antibody (CL0203) - BSA Free (NBP2-52877) is a monoclonal antibody validated for use in IHC, WB and ICC/IF. Anti-Emerin Antibody: Cited in 1 publication. All Novus Biologicals antibodies are covered by our 100% guarantee.
<b>Host</b>	Mouse
<b>Gene ID</b>	2010
<b>Gene Symbol</b>	EMD
<b>Species</b>	Human
<b>Immunogen</b>	This antibody was developed using a recombinant protein derived from P50402, with the exact immunogen sequence remaining proprietary.

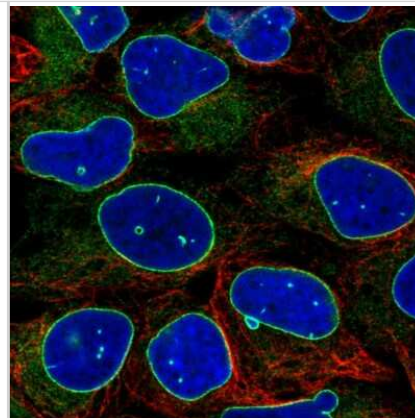
Product Application Details	
<b>Applications</b>	Western Blot, Immunohistochemistry-Paraffin, Immunocytochemistry/ Immunofluorescence, Immunohistochemistry, Knockdown Validated
<b>Recommended Dilutions</b>	Western Blot 1 ug/ml, Immunohistochemistry 1:5000 - 1:10000, Immunocytochemistry/ Immunofluorescence 2-10 ug/ml, Immunohistochemistry-Paraffin 1:5000 - 1:10000, Knockdown Validated
<b>Application Notes</b>	For IHC-Paraffin, HIER pH 6 retrieval is recommended. ICC/IF Fixation Permeabilization: Use PFA/Triton X-100.

**Images**

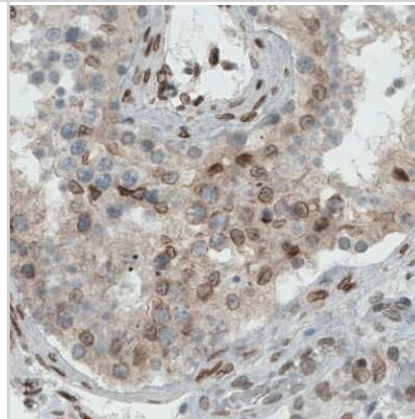
Western Blot: Emerin Antibody (CL0203) [NBP2-52877] - Analysis of extracts from RT-4 cells, transfected with: control siRNA, target specific siRNA probe #1, target specific siRNA probe #2, using Anti-EMD monoclonal antibody. Downregulation of antibody signal confirms target specificity. Remaining % intensity



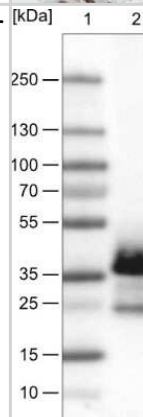
Immunocytochemistry/Immunofluorescence: Emerin Antibody (CL0203) [NBP2-52877] - Staining in U2OS cell line with Anti-EMD monoclonal antibody, shows a distinct nuclear membranous pattern with a weaker additional ER staining in green. Microtubule- and nuclear probes are visualized in red and blue respectively (where available). Antibody staining is shown in green.



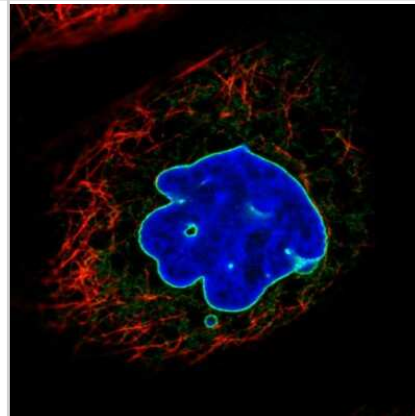
Immunohistochemistry-Paraffin: Emerin Antibody (CL0203) [NBP2-52877] - Staining of human testis shows nuclear membrane immunoreactivity.



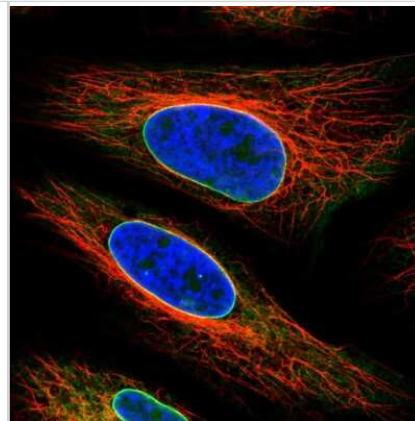
Western Blot: Emerin Antibody (CL0203) [NBP2-52877] - Lane 1: Marker [kDa], Lane 2: RT-4



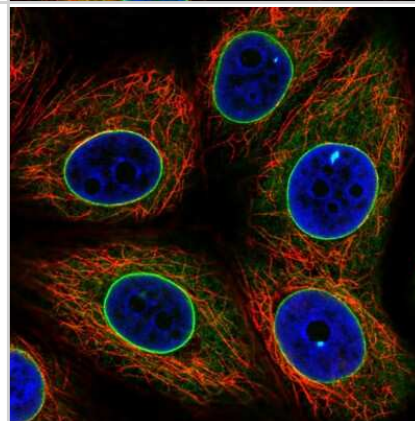
Immunocytochemistry/Immunofluorescence: Emerin Antibody (CL0203) [NBP2-52877] - Staining in A431 cell line with Anti-EMD monoclonal antibody, shows a distinct nuclear membranous pattern with a weaker additional ER staining in green. Microtubule- and nuclear probes are visualized in red and blue respectively (where available). Antibody staining is shown in green.



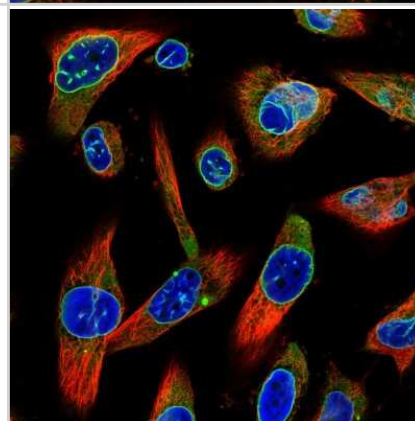
Immunocytochemistry/Immunofluorescence: Emerin Antibody (CL0203) [NBP2-52877] - Staining in HeLa cell line with Anti-EMD monoclonal antibody, shows a distinct nuclear membranous pattern with a weaker additional ER staining in green. Microtubule- and nuclear probes are visualized in red and blue respectively (where available). Antibody staining is shown in green.



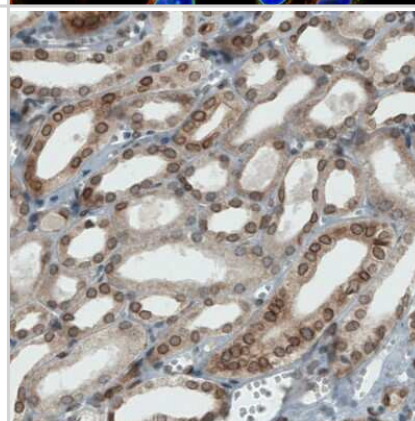
Immunocytochemistry/Immunofluorescence: Emerin Antibody (CL0203) [NBP2-52877] - Staining in MCF7 cell line with Anti-EMD monoclonal antibody, shows a distinct nuclear membranous pattern with a weaker additional ER staining in green. Microtubule- and nuclear probes are visualized in red and blue respectively (where available). Antibody staining is shown in green.



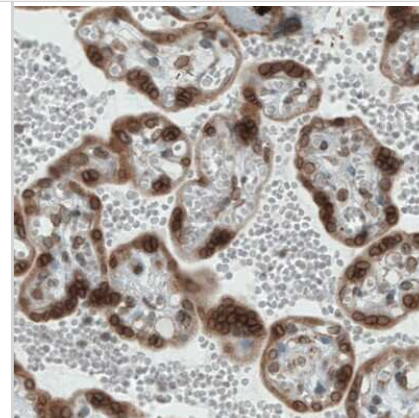
Immunocytochemistry/Immunofluorescence: Emerin Antibody (CL0203) [NBP2-52877] - Staining in U251 cell line with Anti-EMD monoclonal antibody, shows a distinct nuclear membranous pattern with a weaker additional ER staining in green. Microtubule- and nuclear probes are visualized in red and blue respectively (where available). Antibody staining is shown in green.



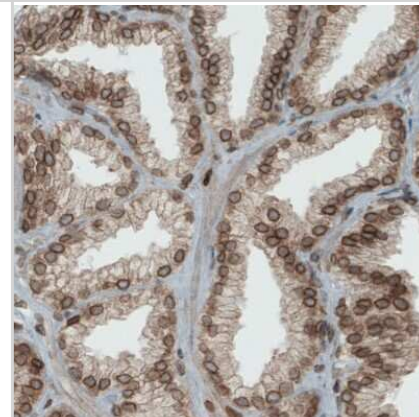
Immunohistochemistry-Paraffin: Emerin Antibody (CL0203) [NBP2-52877] - Staining of human kidney shows nuclear membrane positivity in renal tubules.



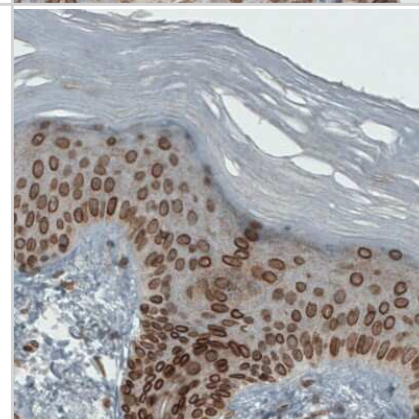
Immunohistochemistry-Paraffin: Emerin Antibody (CL0203) [NBP2-52877] - Staining of human placenta shows strong nuclear membrane positivity in the trophoblast.



Immunohistochemistry-Paraffin: Emerin Antibody (CL0203) [NBP2-52877] - Staining of human prostate shows strong nuclear membrane immunoreactivity in glandular cells.



Immunohistochemistry-Paraffin: Emerin Antibody (CL0203) [NBP2-52877] - Staining of human skin shows strong nuclear membrane positivity in the epidermis cells.



## Publications

Neggers JE, Paoletta BR, Asfaw A et al. Synthetic Lethal Interaction between the ESCRT Paralog Enzymes VPS4A and VPS4B in Cancers Harboring Loss of Chromosome 18q or 16q Cell reports 2020-12-15 [PMID: 33326793] (ICC/IF, Human)



### **Novus Biologicals USA**

10730 E. Briarwood Avenue  
Centennial, CO 80112  
USA  
Phone: 303.730.1950  
Toll Free: 1.888.506.6887  
Fax: 303.730.1966  
nb-customerservice@bio-techne.com

### **Bio-Techne Canada**

21 Canmotor Ave  
Toronto, ON M8Z 4E6  
Canada  
Phone: 905.827.6400  
Toll Free: 855.668.8722  
Fax: 905.827.6402  
canada.inquires@bio-techne.com

### **Bio-Techne Ltd**

19 Barton Lane  
Abingdon Science Park  
Abingdon, OX14 3NB, United Kingdom  
Phone: (44) (0) 1235 529449  
Free Phone: 0800 37 34 15  
Fax: (44) (0) 1235 533420  
info.EMEA@bio-techne.com

### **General Contact Information**

www.novusbio.com  
Technical Support: nb-technical@bio-techne.com  
Orders: nb-customerservice@bio-techne.com  
General: novus@novusbio.com

### **Products Related to NBP2-52877**

---

NBP2-52877PEP	Emerin Recombinant Protein Antigen
NBP2-33376H	Blue Marker Antibody (6F4-F6) [HRP]
HAF007	Goat anti-Mouse IgG Secondary Antibody [HRP]
NB7539	Goat anti-Mouse IgG (H+L) Secondary Antibody [HRP]
NBP1-97005-0.5mg	Mouse IgG1 Isotype Control (MG1)

---

### **Limitations**

This product is for research use only and is not approved for use in humans or in clinical diagnosis. Primary Antibodies are guaranteed for 1 year from date of receipt.

For more information on our 100% guarantee, please visit [www.novusbio.com/guarantee](http://www.novusbio.com/guarantee)

Earn gift cards/discounts by submitting a review: [www.novusbio.com/reviews/submit/NBP2-52877](http://www.novusbio.com/reviews/submit/NBP2-52877)

Earn gift cards/discounts by submitting a publication using this product:  
[www.novusbio.com/publications](http://www.novusbio.com/publications)

