

# Product Datasheet

## ZEB1 Antibody (CL0151) - BSA Free NBP2-52866

Unit Size: 0.1 ml

Store at 4C short term. Aliquot and store at -20C long term. Avoid freeze-thaw cycles.

[www.novusbio.com](http://www.novusbio.com)



[technical@novusbio.com](mailto:technical@novusbio.com)

Protocols, Publications, Related Products, Reviews, Research Tools and Images at:  
[www.novusbio.com/NBP2-52866](http://www.novusbio.com/NBP2-52866)

Updated 12/2/2025 v.20.1

Earn rewards for product  
reviews and publications.

Submit a publication at [www.novusbio.com/publications](http://www.novusbio.com/publications)

Submit a review at [www.novusbio.com/reviews/destination/NBP2-52866](http://www.novusbio.com/reviews/destination/NBP2-52866)



**NBP2-52866**

ZEB1 Antibody (CL0151) - BSA Free

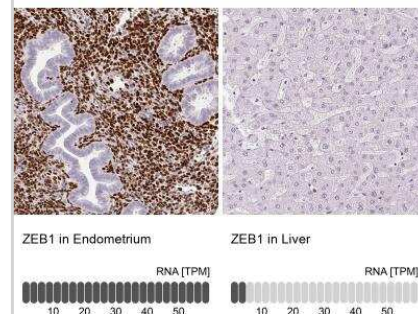
Product Information	
Unit Size	0.1 ml
Concentration	Concentrations vary lot to lot. See vial label for concentration. If unlisted please contact technical services.
Storage	Store at 4C short term. Aliquot and store at -20C long term. Avoid freeze-thaw cycles.
Clonality	Monoclonal
Clone	CL0151
Preservative	0.02% Sodium Azide
Isotype	IgG1
Purity	Protein A purified
Buffer	PBS (pH 7.2) and 40% Glycerol

Product Description	
Description	Novus Biologicals Mouse ZEB1 Antibody (CL0151) - BSA Free (NBP2-52866) is a monoclonal antibody validated for use in IHC, WB and ICC/IF. All Novus Biologicals antibodies are covered by our 100% guarantee.
Host	Mouse
Gene ID	6935
Gene Symbol	ZEB1
Species	Human
Immunogen	This antibody was developed using a recombinant protein derived from P37275, with the exact immunogen sequence remaining proprietary.

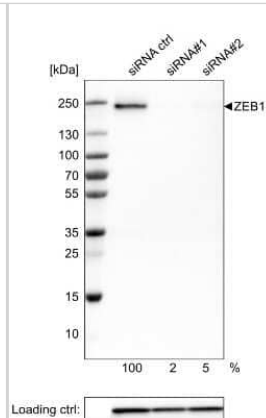
Product Application Details	
Applications	Western Blot, Immunohistochemistry-Paraffin, Immunocytochemistry/ Immunofluorescence, Immunohistochemistry, Knockdown Validated
Recommended Dilutions	Western Blot 1 ug/ml, Immunohistochemistry 1:500 - 1:1000, Immunocytochemistry/ Immunofluorescence 2-10 ug/ml, Immunohistochemistry-Paraffin 1:500 - 1:1000, Knockdown Validated
Application Notes	For IHC-Paraffin, HIER pH 6 retrieval is recommended. ICC/IF Fixation Permeabilization: Use PFA/Triton X-100.

**Images**

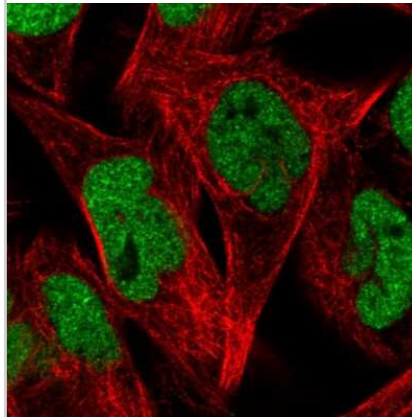
Immunohistochemistry-Paraffin: ZEB1 Antibody (CL0151) [NBP2-52866] - Staining in human endometrium and liver tissues. Corresponding ZEB1 RNA-seq data are presented for the same tissues.



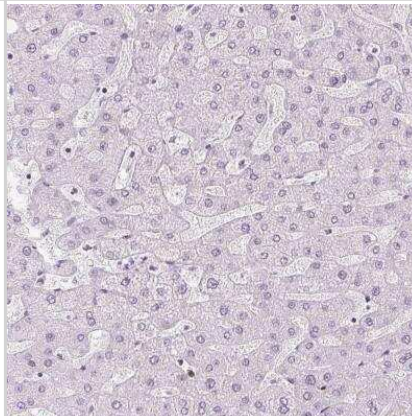
Western Blot: ZEB1 Antibody (CL0151) [NBP2-52866] - Analysis of extracts from RH-30 cells, transfected with: control siRNA, target specific siRNA probe #1, target specific siRNA probe #2, using Anti-ZEB1 monoclonal antibody. Downregulation of antibody signal confirms target specificity. Remaining % intensi



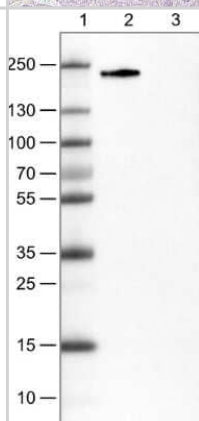
Immunocytochemistry/Immunofluorescence: ZEB1 Antibody (CL0151) [NBP2-52866] - Staining in RH30 cell line with Anti-ZEB1 monoclonal antibody, showing nuclear (without nucleoli) staining in green. Microtubule probes are visualized in red (where available). Antibody staining is shown in green.



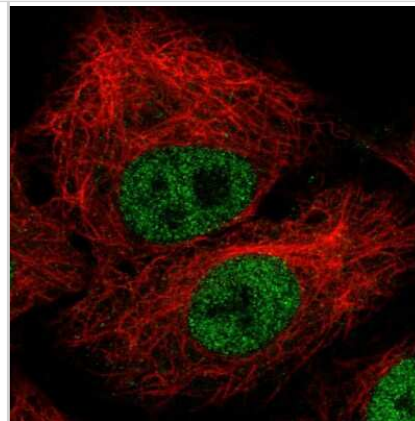
Immunohistochemistry-Paraffin: ZEB1 Antibody (CL0151) [NBP2-52866] - Analysis in human endometrium and liver tissues using AMAb90510 antibody. Corresponding ZEB1 RNA-seq data are presented for the same tissues.



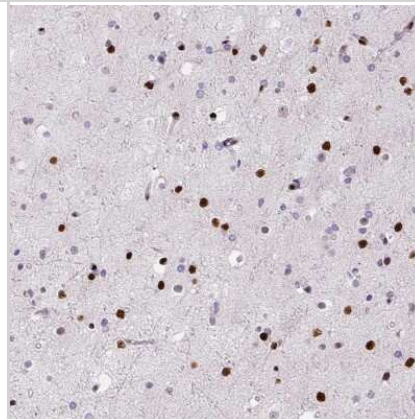
Western Blot: ZEB1 Antibody (CL0151) [NBP2-52866] - Lane 1: Marker [kDa] Lane 2: Human cell line RH-30 Lane 3: Human cell line CACO-2



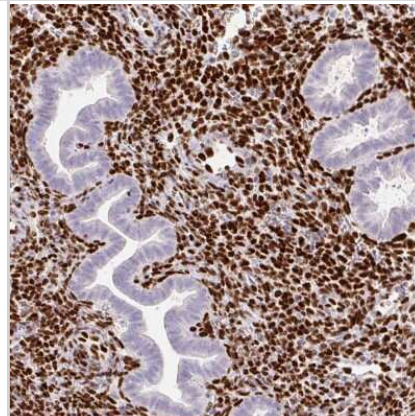
Immunocytochemistry/Immunofluorescence: ZEB1 Antibody (CL0151) [NBP2-52866] - Staining in A549 cell line with Anti-ZEB1 monoclonal antibody, showing nuclear (without nucleoli) staining in green. Microtubule probes are visualized in red (where available). Antibody staining shown in green.



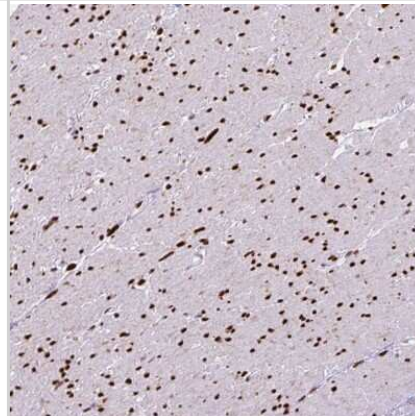
Immunohistochemistry-Paraffin: ZEB1 Antibody (CL0151) [NBP2-52866] - Staining of human cerebral cortex shows strong nuclear positivity in neurons.



Immunohistochemistry-Paraffin: ZEB1 Antibody (CL0151) [NBP2-52866] - Staining of human endometrium shows strong nuclear positivity in stromal cells.



Immunohistochemistry-Paraffin: ZEB1 Antibody (CL0151) [NBP2-52866] - Staining of human smooth muscle shows strong nuclear positivity in smooth muscle cells.





### **Novus Biologicals USA**

10730 E. Briarwood Avenue  
Centennial, CO 80112  
USA  
Phone: 303.730.1950  
Toll Free: 1.888.506.6887  
Fax: 303.730.1966  
nb-customerservice@bio-techne.com

### **Bio-Techne Canada**

21 Canmotor Ave  
Toronto, ON M8Z 4E6  
Canada  
Phone: 905.827.6400  
Toll Free: 855.668.8722  
Fax: 905.827.6402  
canada.inquires@bio-techne.com

### **Bio-Techne Ltd**

19 Barton Lane  
Abingdon Science Park  
Abingdon, OX14 3NB, United Kingdom  
Phone: (44) (0) 1235 529449  
Free Phone: 0800 37 34 15  
Fax: (44) (0) 1235 533420  
info.EMEA@bio-techne.com

### **General Contact Information**

www.novusbio.com  
Technical Support: nb-technical@bio-techne.com  
Orders: nb-customerservice@bio-techne.com  
General: novus@novusbio.com

### **Products Related to NBP2-52866**

---

NBP2-52866PEP	ZEB1 Recombinant Protein Antigen
NBP2-33376H	Blue Marker Antibody (6F4-F6) [HRP]
HAF007	Goat anti-Mouse IgG Secondary Antibody [HRP]
NB7539	Goat anti-Mouse IgG (H+L) Secondary Antibody [HRP]
NBP1-97005-0.5mg	Mouse IgG1 Isotype Control (MG1)

---

### **Limitations**

This product is for research use only and is not approved for use in humans or in clinical diagnosis. Primary Antibodies are guaranteed for 1 year from date of receipt.

For more information on our 100% guarantee, please visit [www.novusbio.com/guarantee](http://www.novusbio.com/guarantee)

Earn gift cards/discounts by submitting a review: [www.novusbio.com/reviews/submit/NBP2-52866](http://www.novusbio.com/reviews/submit/NBP2-52866)

Earn gift cards/discounts by submitting a publication using this product:  
[www.novusbio.com/publications](http://www.novusbio.com/publications)

