

Product Datasheet

Integrin beta 1/CD29 Antibody (K20) - Azide and BSA Free NBP2-52708-0.2mg

Unit Size: 0.2 mg

Store at 4C for up to 3 months. For longer storage, aliquot and store at -20C.

www.novusbio.com



technical@novusbio.com

Publications: 2

Protocols, Publications, Related Products, Reviews, Research Tools and Images at:
www.novusbio.com/NBP2-52708

Updated 9/9/2025 v.20.1

Earn rewards for product
reviews and publications.

Submit a publication at www.novusbio.com/publications

Submit a review at www.novusbio.com/reviews/destination/NBP2-52708



NBP2-52708-0.2mg

Integrin beta 1/CD29 Antibody (K20) - Azide and BSA Free

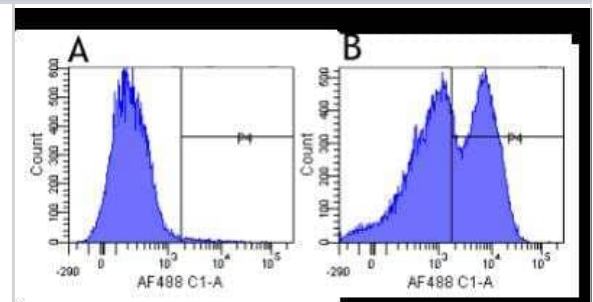
Product Information	
Unit Size	0.2 mg
Concentration	1 mg/ml
Storage	Store at 4C for up to 3 months. For longer storage, aliquot and store at -20C.
Clonality	Monoclonal
Clone	K20
Preservative	0.02% Proclin 300
Isotype	IgG2a Kappa
Purity	Protein A purified
Buffer	PBS

Product Description	
Description	Novus Biologicals Mouse Integrin beta 1/CD29 Antibody (K20) - Azide and BSA Free (NBP2-52708) is a recombinant monoclonal antibody validated for use in IHC, Flow and IP. Anti-Integrin beta 1/CD29 Antibody: Cited in 2 publications. All Novus Biologicals antibodies are covered by our 100% guarantee.
Host	Mouse
Gene ID	3688
Gene Symbol	ITGB1
Species	Human
Specificity/Sensitivity	Recognises human CD29.
Immunogen	Human T-cell lymphoma cells injected into Biozzi high-responder mice.

Product Application Details	
Applications	Flow Cytometry, Immunohistochemistry, Immunohistochemistry-Frozen, CyTOF-ready
Recommended Dilutions	Flow Cytometry 1:10 - 1:1000, Immunohistochemistry, Immunohistochemistry-Frozen 1:10 - 1:500, CyTOF-ready
Application Notes	This antibody is Cytof ready.

Images

Flow Cytometry: Integrin beta 1/CD29 Antibody (K20) [NBP2-52708] - Flow-cytometry using anti-CD29 antibody K20 (NBP2-52708) Human leukocytes were stained with an isotype control (panel A) or the rabbit-chimeric version of K20 (panel B) at a concentration of 1 ug/ml for 30 mins at RT. After washing, bound antibody was detected using a AF488 conjugated donkey anti-rabbit antibody and cells analysed on a FACSCanto flow-cytometer.



Publications

Miao MZ, Su QP, Cui Y et al. Redox-active endosomes mediate $\alpha 5 \beta 1$ integrin signaling and promote chondrocyte matrix metalloproteinase production in osteoarthritis *Science signaling* 2023-10-31 [PMID: 37906629]

Quaglia F, Krishn SR, Sossey-Alaoui K et al. The NOGO receptor NgR2, a novel $\alpha V \beta 3$ integrin effector, induces neuroendocrine differentiation in prostate cancer *Scientific reports* 2022-11-07 [PMID: 36344556] (IP, Human)





Novus Biologicals USA

10730 E. Briarwood Avenue
Centennial, CO 80112
USA
Phone: 303.730.1950
Toll Free: 1.888.506.6887
Fax: 303.730.1966
nb-customerservice@bio-techne.com

Bio-Techne Canada

21 Canmotor Ave
Toronto, ON M8Z 4E6
Canada
Phone: 905.827.6400
Toll Free: 855.668.8722
Fax: 905.827.6402
canada.inquires@bio-techne.com

Bio-Techne Ltd

19 Barton Lane
Abingdon Science Park
Abingdon, OX14 3NB, United Kingdom
Phone: (44) (0) 1235 529449
Free Phone: 0800 37 34 15
Fax: (44) (0) 1235 533420
info.EMEA@bio-techne.com

General Contact Information

www.novusbio.com
Technical Support: nb-technical@bio-techne.com
Orders: nb-customerservice@bio-techne.com
General: novus@novusbio.com

Products Related to NBP2-52708-0.2mg

HAF007	Goat anti-Mouse IgG Secondary Antibody [HRP]
NB7539	Goat anti-Mouse IgG (H+L) Secondary Antibody [HRP]
NBP1-96981-0.5mg	Mouse IgG2a Kappa Isotype Control (M2AK)
NBP2-59570-50ug	Recombinant Human Integrin beta 1/CD29 His Protein

Limitations

This product is for research use only and is not approved for use in humans or in clinical diagnosis. Primary Antibodies are guaranteed for 1 year from date of receipt.

For more information on our 100% guarantee, please visit www.novusbio.com/guarantee

Earn gift cards/discounts by submitting a review: www.novusbio.com/reviews/submit/NBP2-52708

Earn gift cards/discounts by submitting a publication using this product:
www.novusbio.com/publications

