

# Product Datasheet

## Importin alpha 2/KPNA2 Antibody (1E8B7) - BSA Free NBP2-52501

Unit Size: 0.1 mg

Store at 4C short term. Aliquot and store at -20C long term. Avoid freeze-thaw cycles.

[www.novusbio.com](http://www.novusbio.com)



[technical@novusbio.com](mailto:technical@novusbio.com)

Protocols, Publications, Related Products, Reviews, Research Tools and Images at:  
[www.novusbio.com/NBP2-52501](http://www.novusbio.com/NBP2-52501)

Updated 9/9/2025 v.20.1

Earn rewards for product  
reviews and publications.

Submit a publication at [www.novusbio.com/publications](http://www.novusbio.com/publications)

Submit a review at [www.novusbio.com/reviews/destination/NBP2-52501](http://www.novusbio.com/reviews/destination/NBP2-52501)



**NBP2-52501**

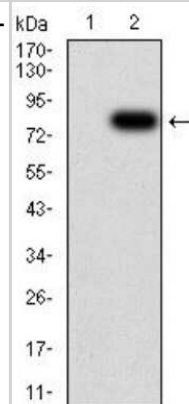
Importin alpha 2/KPNA2 Antibody (1E8B7) - BSA Free

| <b>Product Information</b>         |  |
|------------------------------------|--|
| <b>Unit Size</b>                   | 0.1 mg   |
| <b>Concentration</b>               | 1 mg/ml  |
| <b>Storage</b>                     | Store at 4C short term. Aliquot and store at -20C long term. Avoid freeze-thaw cycles.   |
| <b>Clonality</b>                   | Monoclonal   |
| <b>Clone</b>                       | 1E8B7  |
| <b>Preservative</b>                | 0.05% Sodium Azide   |
| <b>Isotype</b>                     | IgG1   |
| <b>Purity</b>                      | Protein G purified   |
| <b>Buffer</b>                      | PBS  |
| <b>Target Molecular Weight</b>     | 58 kDa   |
| <b>Product Description</b>         |  |
| <b>Description</b>                 | Novus Biologicals Mouse Importin alpha 2/KPNA2 Antibody (1E8B7) - BSA Free (NBP2-52501) is a monoclonal antibody validated for use in IHC, WB, ELISA, Flow and ICC/IF. All Novus Biologicals antibodies are covered by our 100% guarantee. |
| <b>Host</b>                        | Mouse  |
| <b>Gene ID</b>                     | 3838   |
| <b>Gene Symbol</b>                 | KPNA2  |
| <b>Species</b>                     | Human, Mouse   |
| <b>Immunogen</b>                   | Purified recombinant fragment of human Importin alpha 2/KPNA2 (AA: 1-530) expressed in E. Coli.  |
| <b>Product Application Details</b> |  |
| <b>Applications</b>                | Western Blot, Immunohistochemistry-Paraffin, ELISA, Flow Cytometry, Immunocytochemistry/ Immunofluorescence, Immunohistochemistry, CyTOF-ready   |
| <b>Recommended Dilutions</b>       | Western Blot 1:500-1:2000, Flow Cytometry 1:200-1:400, ELISA 1:10000, Immunohistochemistry 1:200-1:1000, Immunocytochemistry/ Immunofluorescence 1:200-1:1000, Immunohistochemistry-Paraffin 1:200 - 1:1000, CyTOF-ready                   |
| <b>Application Notes</b>           | This antibody is Cytof ready.  |

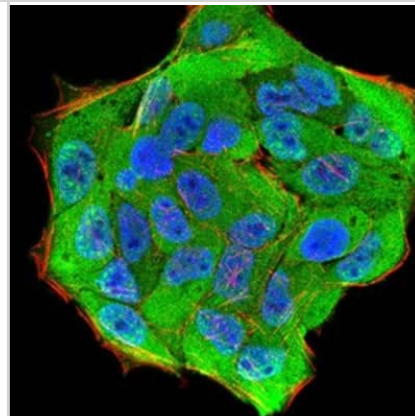


## Images

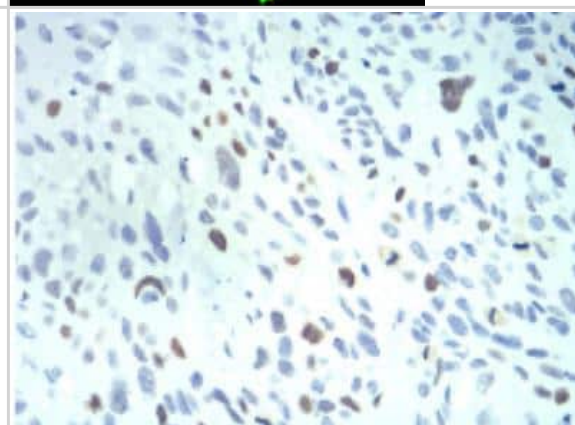
Western Blot: Importin alpha 2/KPNA2 Antibody (1E8B7) [NBP2-52501] - Analysis using KPNA2 mAb against HEK293 (1) and KPNA2 (AA: 1-530)-hlgGFc transfected HEK293 (2) cell lysate.



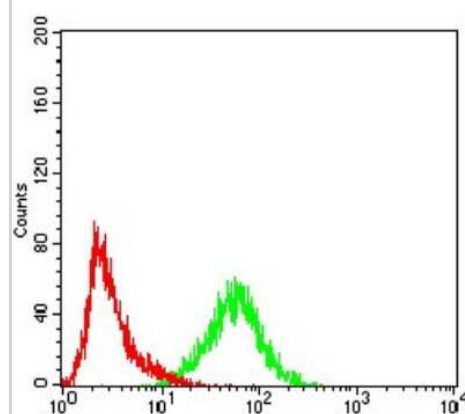
Immunocytochemistry/Immunofluorescence: Importin alpha 2/KPNA2 Antibody (1E8B7) [NBP2-52501] - Analysis of Hela cells using KPNA2 mouse mAb (green). Blue: DRAQ5 fluorescent DNA dye. Red: Actin filaments have been labeled with Alexa Fluor- 555 phalloidin.



Immunohistochemistry-Paraffin: Importin alpha 2/KPNA2 Antibody (1E8B7) [NBP2-52501] - Analysis of paraffin-embedded esophageal cancer tissues using KPNA2 mouse mAb with DAB staining.

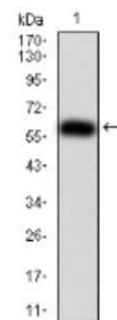


Flow Cytometry: Importin alpha 2/KPNA2 Antibody (1E8B7) [NBP2-52501] - Analysis of Hela cells using KPNA2 mouse mAb (green) and negative control (red).

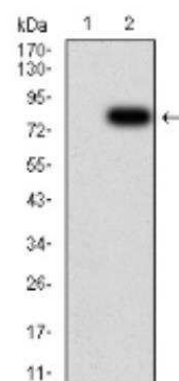


Western Blot: Importin alpha 2/KPNA2 Antibody (1E8B7) [NBP2-52501] - Analysis using Importin alpha 2/KPNA2 against human KPNA2 (AA: 1-530) recombinant protein. (Expected MW is 60.3 kDa)

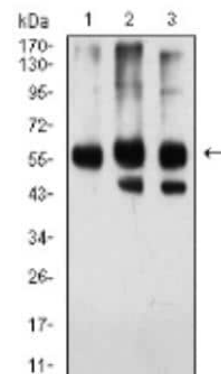
### Western Blot



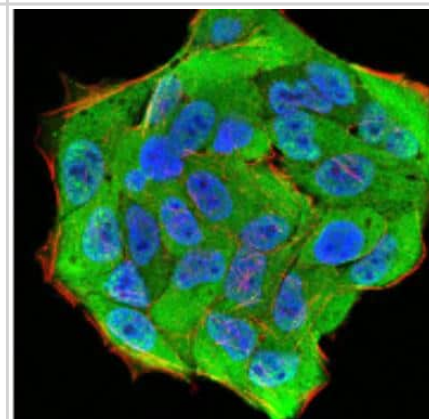
Western Blot: Importin alpha 2/KPNA2 Antibody (1E8B7) [NBP2-52501] - Analysis using Importin alpha 2/KPNA2 against HEK293 (1) and KPNA2 (AA: 1-530)-hlgGFc transfected HEK293 (2) cell lysate.



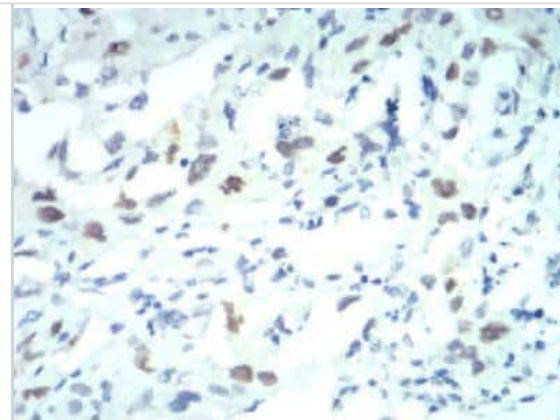
Western Blot: Importin alpha 2/KPNA2 Antibody (1E8B7) [NBP2-52501] - Analysis using KPNA2 mouse mAb against HeLa (1), HEK293 (2), and NIH/3T3 (3) cell lysate.



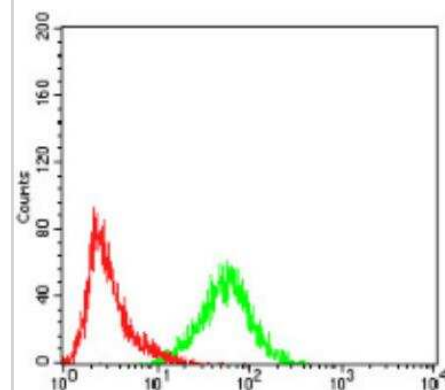
Immunocytochemistry/Immunofluorescence: Importin alpha 2/KPNA2 Antibody (1E8B7) [NBP2-52501] - Analysis of HeLa cells using KPNA2 mouse mAb (green). Blue: DRAQ5 fluorescent DNA dye. Red: Actin filaments have been labeled with Alexa Fluor- 555 phalloidin.



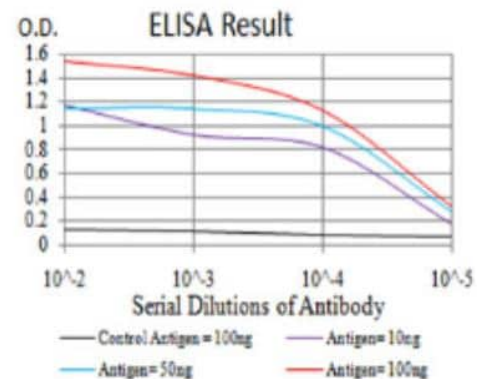
Immunohistochemistry-Paraffin: Importin alpha 2/KPNA2 Antibody (1E8B7) [NBP2-52501] - Analysis of paraffin-embedded lung cancer tissues using KPNA2 mouse mAb with DAB staining.



Flow Cytometry: Importin alpha 2/KPNA2 Antibody (1E8B7) [NBP2-52501] - Analysis of HeLa cells using KPNA2 mouse mAb (green) and negative control (red).



ELISA: Importin alpha 2/KPNA2 Antibody (1E8B7) [NBP2-52501] - 1:Black line: Control Antigen (100 ng);Purple line: Antigen (10ng); Blue line: Antigen (50 ng); Red line:Antigen (100 ng)





### **Novus Biologicals USA**

10730 E. Briarwood Avenue  
Centennial, CO 80112  
USA  
Phone: 303.730.1950  
Toll Free: 1.888.506.6887  
Fax: 303.730.1966  
nb-customerservice@bio-techne.com

### **Bio-Techne Canada**

21 Canmotor Ave  
Toronto, ON M8Z 4E6  
Canada  
Phone: 905.827.6400  
Toll Free: 855.668.8722  
Fax: 905.827.6402  
canada.inquires@bio-techne.com

### **Bio-Techne Ltd**

19 Barton Lane  
Abingdon Science Park  
Abingdon, OX14 3NB, United Kingdom  
Phone: (44) (0) 1235 529449  
Free Phone: 0800 37 34 15  
Fax: (44) (0) 1235 533420  
info.EMEA@bio-techne.com

### **General Contact Information**

www.novusbio.com  
Technical Support: nb-technical@bio-techne.com  
Orders: nb-customerservice@bio-techne.com  
General: novus@novusbio.com

### **Products Related to NBP2-52501**

---

|                  |  |
|------------------|--|
| NBP2-33376H      | Blue Marker Antibody (6F4-F6) [HRP]                |
| HAF007           | Goat anti-Mouse IgG Secondary Antibody [HRP]       |
| NB7539           | Goat anti-Mouse IgG (H+L) Secondary Antibody [HRP] |
| NBP1-97005-0.5mg | Mouse IgG1 Isotype Control (MG1)                   |

---

### **Limitations**

This product is for research use only and is not approved for use in humans or in clinical diagnosis. Primary Antibodies are guaranteed for 1 year from date of receipt.

For more information on our 100% guarantee, please visit [www.novusbio.com/guarantee](http://www.novusbio.com/guarantee)

Earn gift cards/discounts by submitting a review: [www.novusbio.com/reviews/submit/NBP2-52501](http://www.novusbio.com/reviews/submit/NBP2-52501)

Earn gift cards/discounts by submitting a publication using this product:  
[www.novusbio.com/publications](http://www.novusbio.com/publications)

