

Product Datasheet

PLA2R1 Antibody (12-6-5) - BSA Free NBP2-50248

Unit Size: 0.1 ml

Store at 4C short term. Aliquot and store at -20C long term. Avoid freeze-thaw cycles.

www.novusbio.com



technical@novusbio.com

Publications: 3

Protocols, Publications, Related Products, Reviews, Research Tools and Images at:
www.novusbio.com/NBP2-50248

Updated 9/9/2025 v.20.1

Earn rewards for product
reviews and publications.

Submit a publication at www.novusbio.com/publications

Submit a review at www.novusbio.com/reviews/destination/NBP2-50248



NBP2-50248

PLA2R1 Antibody (12-6-5) - BSA Free

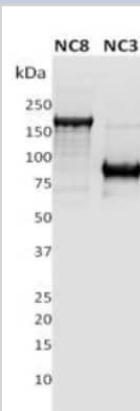
Product Information	
Unit Size	0.1 ml
Concentration	1 mg/ml
Storage	Store at 4C short term. Aliquot and store at -20C long term. Avoid freeze-thaw cycles.
Clonality	Monoclonal
Clone	12-6-5
Preservative	0.02% Sodium Azide
Isotype	IgG2b
Purity	Protein G purified
Buffer	PBS

Product Description	
Description	Novus Biologicals Mouse PLA2R1 Antibody (12-6-5) - BSA Free (NBP2-50248) is a monoclonal antibody validated for use in IHC, WB, ELISA, Flow and ICC/IF. Anti-PLA2R1 Antibody: Cited in 3 publications. All Novus Biologicals antibodies are covered by our 100% guarantee.
Host	Mouse
Gene ID	22925
Gene Symbol	PLA2R1
Species	Human
Immunogen	Human PLA2R extracellular sequence N-C3 (containing domains N-terminal Cysteine rich-FibII-CTLD1-CTLD2-CTLD3). Genbank acc no. U17033; amino acids 20-663 Recombinant protein expressed in HEK 293-EBNA-1 cells

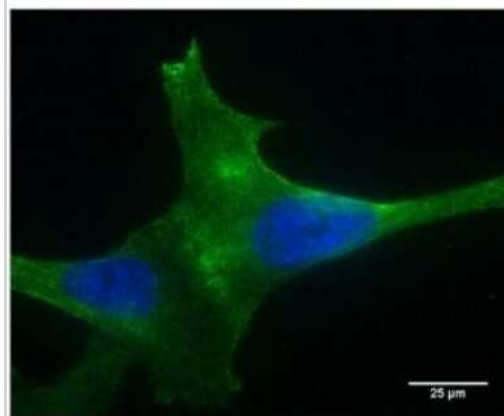
Product Application Details	
Applications	Western Blot, ELISA, Flow Cytometry, Immunocytochemistry/ Immunofluorescence, Immunohistochemistry, CyTOF-ready
Recommended Dilutions	Western Blot 1:5000 - 1:10000, Flow Cytometry 1:200, ELISA 1:5000 - 1:20000, Immunohistochemistry 1:5000 - 1:20000, Immunocytochemistry/ Immunofluorescence 1:10 - 1:500, CyTOF-ready
Application Notes	This antibody is Cytof ready.

Images

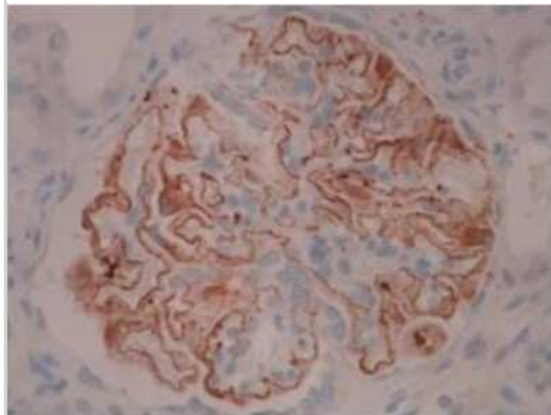
Western Blot: PLA2R1 Antibody (12-6-5) [NBP2-50248] - 1ug of recombinant full length extracellular domain of human PLA2R (NC8) and a N-terminus fragment of PLA2R (NC3) were subjected to SDS PAGE followed by western blot using Ms anti-PLAR (CI12-6-5) at dilution 1:10000.



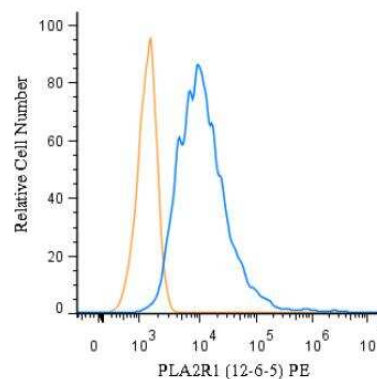
Immunocytochemistry/Immunofluorescence: PLA2R1 Antibody (12-6-5) [NBP2-50248] - Staining of PLA2R over-expressing podocytes revealing cell surface expression of the PLA2R receptor. Dilution 1:400 (under 40x lens).



Immunohistochemistry: PLA2R1 Antibody (12-6-5) [NBP2-50248] - Membranous nephropathy kidney showing staining of PLA2R in the capillary wall of the glomerular basement membrane. IHC Protocol Info: HIER pH8 (CC1) for 64 minutes, 36 minute primary antibody (PLA2R Mouse 12-6-5) incubation at room temperature using a dilution of 1:5000, using Ventana Ultraview DAB detection system.

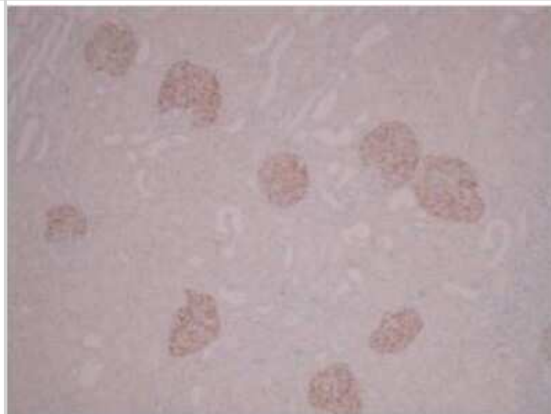


Flow Cytometry: PLA2R1 Antibody (12-6-5) [NBP2-50248] - A surface stain was performed on HeLa cells with PLA2R1 Antibody (12-6-5) NBP2-50248PE (blue) and a matched isotype control (orange). Cells were incubated in an antibody dilution of 2.5 ug/mL for 20 minutes at room temperature. Both antibodies were conjugated to phycoerythrin.

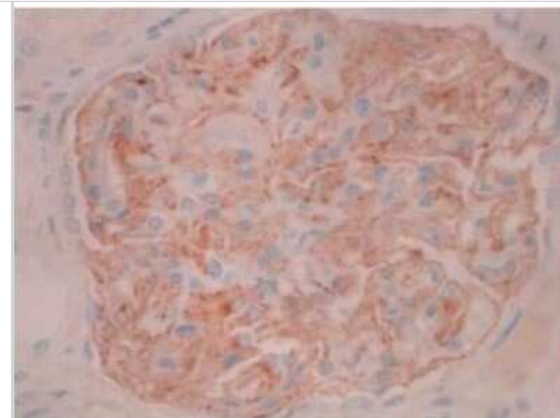


Copyright © 2018 Novus Biologicals

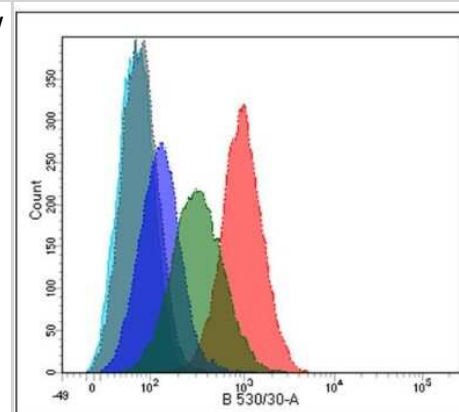
Immunohistochemistry: PLA2R1 Antibody (12-6-5) [NBP2-50248] - Normal human kidney showing glomerular specific staining. IHC Protocol Info: HIER pH8 (CC1) for 64 minutes, 36 minute primary antibody (PLA2R Mouse 12-6-5) incubation at room temperature using a dilution of 1:5000, using Ventana Ultraview DAB detection system.



Immunohistochemistry: PLA2R1 Antibody (12-6-5) [NBP2-50248] - Normal human kidney showing podocyte specific staining. IHC Protocol Info: HIER pH8 (CC1) for 64 minutes, 36 minute primary antibody (PLA2R Mouse 12-6-5) incubation at room temperature using a dilution of 1:5000, using Ventana Ultraview DAB detection system.



Flow Cytometry: PLA2R1 Antibody (12-6-5) [NBP2-50248] - Overlay flow cytometry histograms of wild type (dark blue line) and over-expressing PLA2R podocytes (low expressor, green line; high expressor, red line) stained with Ms C12-6-5) at dilution 1:200. Negative controls were unlabelled cells (turquoise line) and mouse IgG (grey line).



Publications

Xin Q, Yu G, Feng I, Dean J Chromatin remodeling of prostaglandin signaling in smooth muscle enables mouse embryo passage through the female reproductive tract *Developmental cell* 2023-09-25 [PMID: 37714160]

Le Quintrec M, Teisseyre M, Bec N et al. Contactin-1 is a novel target antigen in membranous nephropathy associated with chronic inflammatory demyelinating polyneuropathy *Kidney Int* 2021-10-01 [PMID: 34600965] (ICC/IF, Human)

Fresquet M, Jowitt TA, McKenzie EA et al. PLA2R binds to the annexin A2-S100A10 complex in human podocytes *Sci Rep* 2017-07-31 [PMID: 28761153] (ICC/IF, Human)

Procedures

Immunohistochemistry protocol for PLA2R1 Antibody (NBP2-50248)

PLA2R1 Antibody (12-6-5):

System: Automated Ventana Benchmark ULTRA

Detection Kit: UltraView DAB Detection System

Antigen Retrieval: 64 minute heat in CC1 (Tris based pH8.4 buffer)

Antibody concentration: 1:5000

Antibody Incubation: 36 minute at room temperature.

Counterstain: Haematoxylin 12 min, Bluing Reagent 4 min.

Positive Tissue Control: Normal kidney

The automated Ventana BenchMark ULTRA IHC - ISH Staining Module (Ventana Co., Tucson, AZ, USA) was used together with the Ultraview 3, 3' diaminobenzidine (DAB) version 3 detection system (Ventana Co.). Tissue sections (4 um) were deparaffinized and incubated in EZPrep Volume Adjust (Ventana Co.). At intervals between steps the slides were washed with a TRIS-based Reaction Buffer, pH 7.6. A heat-induced antigen retrieval protocol set for 64 min was carried out using a TRIS- ethylenediamine tetracetic acid (EDTA)-boric acid pH 8.4 buffer (Cell Conditioner 1). The sections were incubated with ultraviolet inhibitor blocking solution for 4 min, then with antibody to PLA2R for a set time of 36 min at room temperature. This was followed by incubation with horseradish peroxidase-linked secondary antibody (8 min.), followed by DAB chromogen and substrate (8 min.), and copper enhancer for 4 min. Counterstain (haematoxylin II) was applied for 12 min before an incubation of 4 min with bluing reagent.





Novus Biologicals USA

10730 E. Briarwood Avenue
Centennial, CO 80112
USA
Phone: 303.730.1950
Toll Free: 1.888.506.6887
Fax: 303.730.1966
nb-customerservice@bio-techne.com

Bio-Techne Canada

21 Canmotor Ave
Toronto, ON M8Z 4E6
Canada
Phone: 905.827.6400
Toll Free: 855.668.8722
Fax: 905.827.6402
canada.inquires@bio-techne.com

Bio-Techne Ltd

19 Barton Lane
Abingdon Science Park
Abingdon, OX14 3NB, United Kingdom
Phone: (44) (0) 1235 529449
Free Phone: 0800 37 34 15
Fax: (44) (0) 1235 533420
info.EMEA@bio-techne.com

General Contact Information

www.novusbio.com
Technical Support: nb-technical@bio-techne.com
Orders: nb-customerservice@bio-techne.com
General: novus@novusbio.com

Products Related to NBP2-50248

NBP2-33376H	Blue Marker Antibody (6F4-F6) [HRP]
HAF007	Goat anti-Mouse IgG Secondary Antibody [HRP]
NB7539	Goat anti-Mouse IgG (H+L) Secondary Antibody [HRP]
NBP2-27231	Mouse IgG2b Isotype Control (MPC-11)

Limitations

This product is for research use only and is not approved for use in humans or in clinical diagnosis. Primary Antibodies are guaranteed for 1 year from date of receipt.

For more information on our 100% guarantee, please visit www.novusbio.com/guarantee

Earn gift cards/discounts by submitting a review: www.novusbio.com/reviews/submit/NBP2-50248

Earn gift cards/discounts by submitting a publication using this product:
www.novusbio.com/publications

