

Product Datasheet

IRF6 Antibody - BSA Free NBP2-49383

Unit Size: 0.1 ml

Store at 4C short term. Aliquot and store at -20C long term. Avoid freeze-thaw cycles.

www.novusbio.com



technical@novusbio.com

Publications: 2

Protocols, Publications, Related Products, Reviews, Research Tools and Images at:
www.novusbio.com/NBP2-49383

Updated 12/2/2025 v.20.1

Earn rewards for product
reviews and publications.

Submit a publication at www.novusbio.com/publications

Submit a review at www.novusbio.com/reviews/destination/NBP2-49383



NBP2-49383

IRF6 Antibody - BSA Free

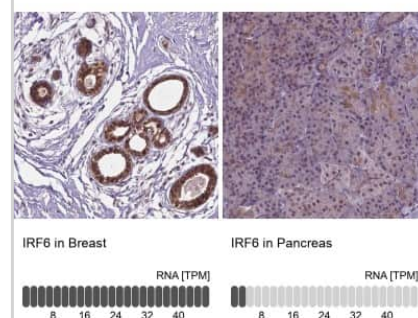
Product Information	
Unit Size	0.1 ml
Concentration	Concentrations vary lot to lot. See vial label for concentration. If unlisted please contact technical services.
Storage	Store at 4C short term. Aliquot and store at -20C long term. Avoid freeze-thaw cycles.
Clonality	Polyclonal
Preservative	0.02% Sodium Azide
Isotype	IgG
Purity	Affinity purified
Buffer	PBS (pH 7.2) and 40% Glycerol

Product Description	
Description	Novus Biologicals Rabbit IRF6 Antibody - BSA Free (NBP2-49383) is a polyclonal antibody validated for use in IHC, WB and ICC/IF. Anti-IRF6 Antibody: Cited in 2 publications. All Novus Biologicals antibodies are covered by our 100% guarantee.
Host	Rabbit
Gene ID	3664
Gene Symbol	IRF6
Species	Human
Immunogen	This antibody was developed against a recombinant protein corresponding to amino acids: KSREFNLMYDGTKEVPMNPVKIYQVCDIPQPQGSIIINPGSTGSAPWDEKDNDV DEE

Product Application Details	
Applications	Western Blot, Immunohistochemistry-Paraffin, Immunocytochemistry/Immunofluorescence, Immunohistochemistry
Recommended Dilutions	Western Blot 0.04-0.4 ug/ml, Immunohistochemistry 1:200 - 1:500, Immunocytochemistry/ Immunofluorescence 0.25-2 ug/ml, Immunohistochemistry-Paraffin 1:200 - 1:500
Application Notes	For IHC-Paraffin, HIER pH 6 retrieval is recommended. ICC/IF Fixation Permeabilization: Use PFA/Triton X-100.

Images

Immunohistochemistry-Paraffin: IRF6 Antibody [NBP2-49383] - Staining in human breast and pancreas tissues using anti-IRF6 antibody. Corresponding IRF6 RNA-seq data are presented for the same tissues.



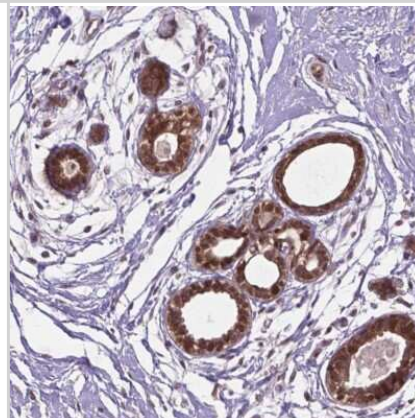
Western Blot: IRF6 Antibody [NBP2-49383] - Analysis using Anti-IRF6 antibody NBP2-49383 (A) shows similar pattern to independent antibody NBP2-55961 (B).



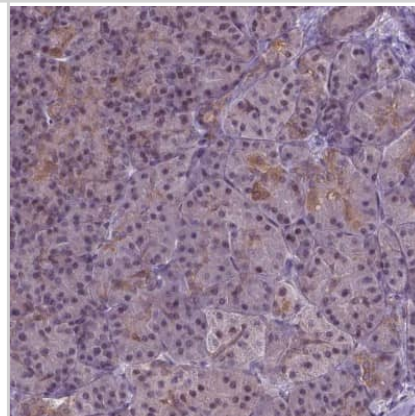
Immunocytochemistry/Immunofluorescence: IRF6 Antibody [NBP2-49383] - Staining of human cell line HaCaT shows localization to nucleus, cytosol & cell junctions. Antibody staining is shown in green.



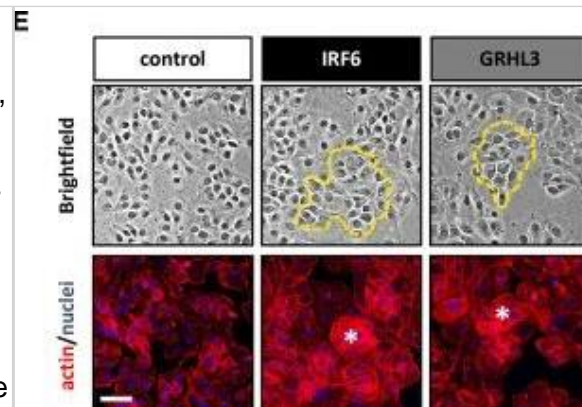
Immunohistochemistry-Paraffin: IRF6 Antibody [NBP2-49383] - Staining of human breast shows high expression.



Immunohistochemistry-Paraffin: IRF6 Antibody [NBP2-49383] - Staining of human pancreas shows low expression as expected.



Overexpression of IRF6 and GRHL3 induces differentiation. (A) The differentiation status of three normal cell strains compared to three SCC lines was assessed by qPCR for a panel of differentiation markers (IRF6, GRHL3, IVL, FLG, K10, LOR, and TGM1). The data are shown as a heatmap. Scale: light green – low gene expression; red – high gene expression. (B) IF staining for TGM1, IVL, LOR, and FLG in PA-Ep (non-cancerous) vs. SCC-68 indicates less differentiated cells in the SCC-68 cultures. Scale bar: 50 μ m. Note that staining for LOR and TGM1 resulted in a nuclear background staining (Supplementary Figure 5). (C) The same healthy cell strains and SCC cell lines were analyzed in low density (LD) and their corresponding high density (HD) cultures, and the same set of differentiation genes was analyzed by qPCR. The results are shown as heatmap of the fold inductions (HD vs. LD). Scale: light green – low gene induction; red – high gene induction. (D) The effect of forced expression of IRF6 (black) and GRHL3 (gray) compared to control SCC-68 (white) on differentiation markers (K10, FLG, and LOR) was determined by qPCR. * $p < 0.05$ control vs. IRF6 and GRHL3. (E) Brightfield pictures and corresponding pictures with actin staining indicate the presence of differentiating cell groups (dashed yellow line in the brightfield images and asterisks in the actin staining) in SCC68 cells transduced with IRF6 or GRHL3. Scale bar: 50 μ m. (F) K10 staining in dense cultures of transduced SCC-68 cells (left) and its quantification (right). Note the presence of significantly more K10-positive cells in SCC-68/IRF6 and SCC-68/GRHL3 compared to SCC-68 control. Scale bar: 50 μ m. * $p < 0.05$ control vs. IRF6 and GRHL3. Image collected and cropped by CiteAb from the following open publication (<https://pubmed.ncbi.nlm.nih.gov/36457487>), licensed under a CC-BY license. Not internally tested by Novus Biologicals.



Publications

Eleftheria Grousi, Lukas Muerner, Ludovica Parisi, Silvia Rihs, Stephan von Gunten, Christos Katsaros, Martin Degen Lack of IRF6 Disrupts Human Epithelial Homeostasis by Altering Colony Morphology, Migration Pattern, and Differentiation Potential of Keratinocytes *Frontiers in Cell and Developmental Biology* 2021-09-30 [PMID: 34660580]

Parisi L, Mockenhaupt C, Rihs S et al. Consistent downregulation of the cleft lip/palate-associated genes IRF6 and GRHL3 in carcinomas *Frontiers in oncology* 2022-11-15 [PMID: 36457487] (IHC, Human)



Novus Biologicals USA

10730 E. Briarwood Avenue
Centennial, CO 80112
USA
Phone: 303.730.1950
Toll Free: 1.888.506.6887
Fax: 303.730.1966
nb-customerservice@bio-techne.com

Bio-Techne Canada

21 Canmotor Ave
Toronto, ON M8Z 4E6
Canada
Phone: 905.827.6400
Toll Free: 855.668.8722
Fax: 905.827.6402
canada.inquires@bio-techne.com

Bio-Techne Ltd

19 Barton Lane
Abingdon Science Park
Abingdon, OX14 3NB, United Kingdom
Phone: (44) (0) 1235 529449
Free Phone: 0800 37 34 15
Fax: (44) (0) 1235 533420
info.EMEA@bio-techne.com

General Contact Information

www.novusbio.com
Technical Support: nb-technical@bio-techne.com
Orders: nb-customerservice@bio-techne.com
General: novus@novusbio.com

Products Related to NBP2-49383

NBP2-49383PEP	IRF6 Recombinant Protein Antigen
NBP2-33376H	Blue Marker Antibody (6F4-F6) [HRP]
HAF008	Goat anti-Rabbit IgG Secondary Antibody [HRP]
NB7160	Goat anti-Rabbit IgG (H+L) Secondary Antibody [HRP]
NBP2-24891	Rabbit IgG Isotype Control

Limitations

This product is for research use only and is not approved for use in humans or in clinical diagnosis. Primary Antibodies are guaranteed for 1 year from date of receipt.

For more information on our 100% guarantee, please visit www.novusbio.com/guarantee

Earn gift cards/discounts by submitting a review: www.novusbio.com/reviews/submit/NBP2-49383

Earn gift cards/discounts by submitting a publication using this product:
www.novusbio.com/publications

