

# Product Datasheet

## **BIN2 Antibody - BSA Free NBP2-48690**

Unit Size: 0.1 ml

Store at 4C short term. Aliquot and store at -20C long term. Avoid freeze-thaw cycles.

[www.novusbio.com](http://www.novusbio.com)



[technical@novusbio.com](mailto:technical@novusbio.com)

Protocols, Publications, Related Products, Reviews, Research Tools and Images at:  
[www.novusbio.com/NBP2-48690](http://www.novusbio.com/NBP2-48690)

Updated 12/2/2025 v.20.1

**Earn rewards for product  
reviews and publications.**

Submit a publication at [www.novusbio.com/publications](http://www.novusbio.com/publications)

Submit a review at [www.novusbio.com/reviews/destination/NBP2-48690](http://www.novusbio.com/reviews/destination/NBP2-48690)



**NBP2-48690**

BIN2 Antibody - BSA Free

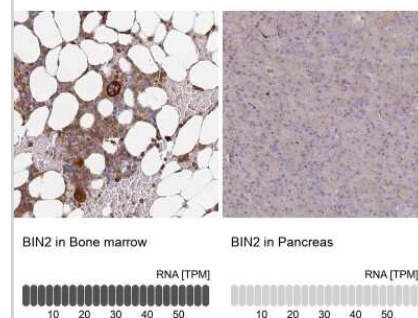
Product Information	
Unit Size	0.1 ml
Concentration	Concentrations vary lot to lot. See vial label for concentration. If unlisted please contact technical services.
Storage	Store at 4C short term. Aliquot and store at -20C long term. Avoid freeze-thaw cycles.
Clonality	Polyclonal
Preservative	0.02% Sodium Azide
Isotype	IgG
Purity	Affinity purified
Buffer	PBS (pH 7.2) and 40% Glycerol

Product Description	
Description	Novus Biologicals Rabbit BIN2 Antibody - BSA Free (NBP2-48690) is a polyclonal antibody validated for use in IHC and WB. All Novus Biologicals antibodies are covered by our 100% guarantee.
Host	Rabbit
Gene ID	51411
Gene Symbol	BIN2
Species	Human
Immunogen	This antibody was developed against a recombinant protein corresponding to amino acids: EKPVRTPEAKENENIHNQNPEELCTSPMLTSQVASEPGEAKKMEDKEKDNKL ISADSSEGQDQLQVSMVPENNNLTAPEPQEEVSTSENPL

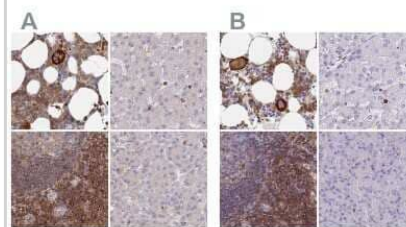
Product Application Details	
Applications	Western Blot, Immunohistochemistry-Paraffin, Immunohistochemistry
Recommended Dilutions	Western Blot 0.04-0.4 ug/ml, Immunohistochemistry 1:200 - 1:500, Immunohistochemistry-Paraffin 1:200 - 1:500
Application Notes	For IHC-Paraffin, HIER pH 6 retrieval is recommended.

**Images**

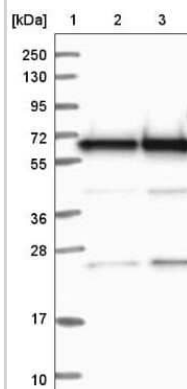
Immunohistochemistry-Paraffin: BIN2 Antibody [NBP2-48690] - Staining in human bone marrow and pancreas tissues using anti-BIN2 antibody. Corresponding BIN2 RNA-seq data are presented for the same tissues.



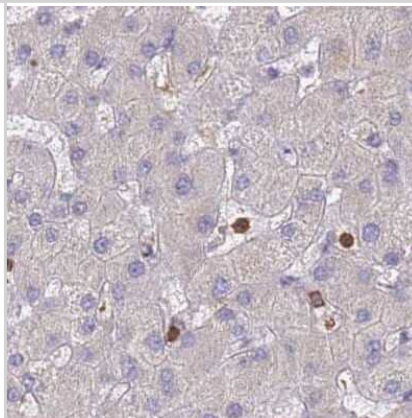
Immunohistochemistry-Paraffin: BIN2 Antibody [NBP2-48690] - Staining of human bone marrow, liver, lymph node and pancreas using Anti-BIN2 antibody NBP2-48690 (A) shows similar protein distribution across tissues to independent antibody NBP2-48691 (B).



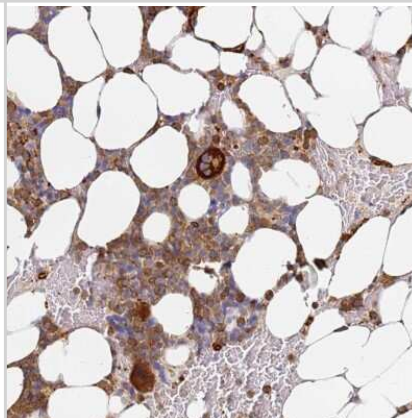
Western Blot: BIN2 Antibody [NBP2-48690] - Lane 1: Marker [kDa] 250, 130, 95, 72, 55, 36, 28, 17, 10  
Lane 2: Human cell line RT-4  
Lane 3: Human cell line U-251MG sp



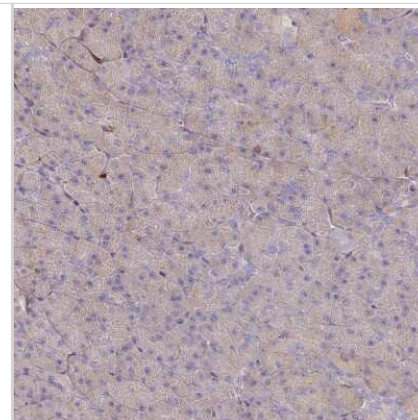
Immunohistochemistry-Paraffin: BIN2 Antibody [NBP2-48690] - Staining of human liver.



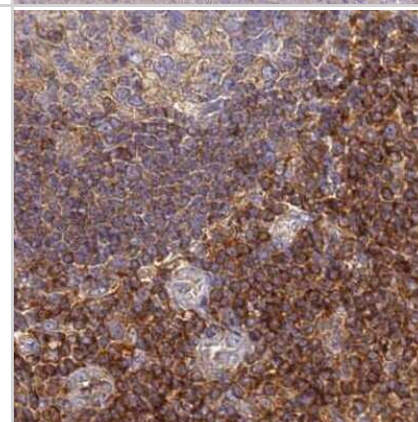
Immunohistochemistry-Paraffin: BIN2 Antibody [NBP2-48690] - Staining of human bone marrow shows high expression.



Immunohistochemistry-Paraffin: BIN2 Antibody [NBP2-48690] - Staining of human pancreas shows low expression as expected.

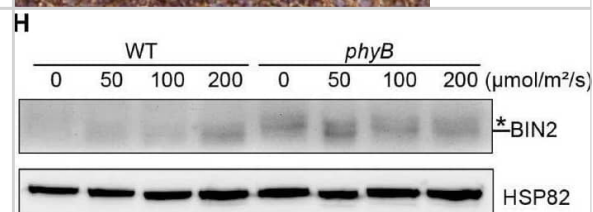


Immunohistochemistry-Paraffin: BIN2 Antibody [NBP2-48690] - Staining of human lymph node.



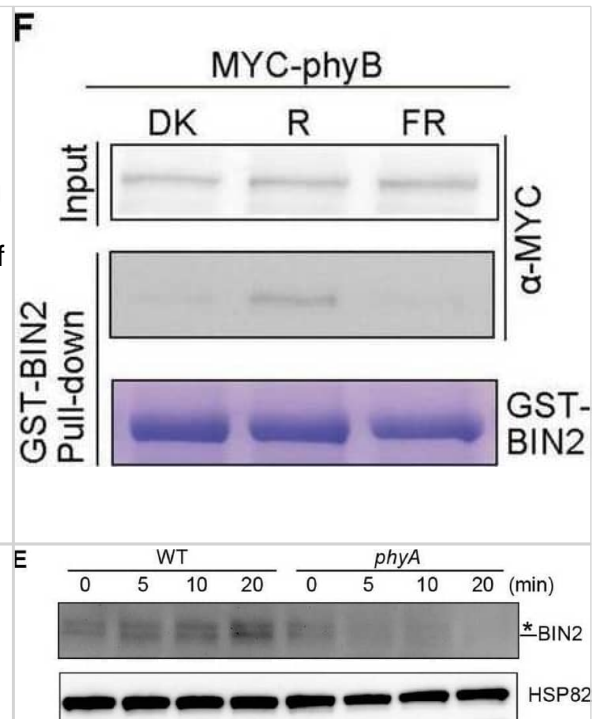
phyA and phyB mediate far-red and red lights inhibition of BL-induced degradation of BIN2 protein. (A,B) Western blotting assays showing phyA- and phyB-mediated far-red or red light inhibition of degradation of BIN2 protein. WT, phyA and phyB mutant seedlings were grown on MS plates in continuous darkness (DK) or far-red light (FR, 1  $\mu\text{mol}/\text{m}^2/\text{s}$ ) (A) or red light (R, 50  $\mu\text{mol}/\text{m}^2/\text{s}$ ) (B) for 5 days. (C,D) RT-qPCR assays showing the regulation of BIN2 expression by phyA or phyB in (A,B).

Data correspond to the mean and standard deviation from three technical replicates. (E,F) Western blotting assays showing the effects of different exposure times of far-red or red light on the degradation of BIN2 protein. WT, phyA and phyB mutant seedlings were grown on MS plates in darkness for 5 days, and then exposed to far-red light (10  $\mu\text{mol}/\text{m}^2/\text{s}$ ) (E) or red light (50  $\mu\text{mol}/\text{m}^2/\text{s}$ ) (F) for the indicated lengths of time. (G,H) Western blot assays showing the effects of far-red or red light intensity on the degradation of BIN2 protein. WT, phyA and phyB mutant seedlings were grown on MS plates in darkness for 5 days, and then exposed to the indicated light intensities of far-red (G) or red light (H) for 6 h. (I,J) Western blot assays showing the effects of phyA or phyB on the BL-induced degradation of BIN2 protein. WT, phyA and phyB mutant seedlings were grown on MS plates supplemented with 2  $\mu\text{M}$  BRZ in darkness for 5 days, and then treated with 1  $\mu\text{M}$  BL, and then exposed to far-red (10  $\mu\text{mol}/\text{m}^2/\text{s}$ ) (I) or red light (50  $\mu\text{mol}/\text{m}^2/\text{s}$ ) (J) for the indicated lengths of time. Image collected and cropped by CiteAb from the following open publication (<https://pubmed.ncbi.nlm.nih.gov/35432407>), licensed under a CC-BY license. Not internally tested by Novus Biologicals.

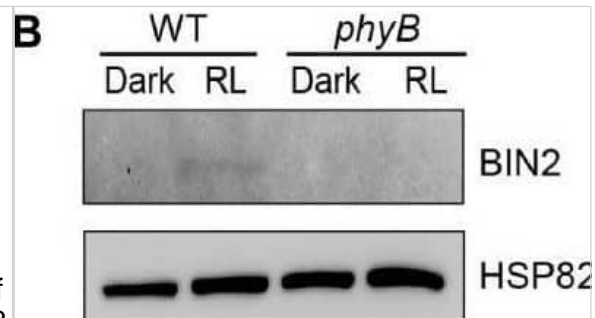


phyA and phyB interact with BIN2. (A,B) His pull-down assays showing the interactions of phyA-N, phyA-C (A), phyB-N and phyB-C (B) with BIN2. GST-BIN2 served as a bait. His-TF-phyA-N, His-TF-phyA-C, His-TF-phyB-N, His-TF-phyB-C, and His-TF served as preys. The preys were detected with  $\alpha$ -His antibody. (C,D) Split-LUC assays showing the interactions of phyA (C) and phyB (D) with BIN2. The vectors expressing nLUC and/or cLUC served as negative controls. (E,F) Semi-in vivo GST pull-down assays showing far-red and red light-dependent interactions of phyA (E) and phyB (F) with BIN2, respectively. GST-BIN2 served as a bait. The protein extracts prepared from phyA-YFP-OX and Myc-phyB-OX seedlings served as preys. phyA-YFP-OX and Myc-phyB-OX seedlings were grown in dark for 5 days, and then exposed to far-red light (FR, 10  $\mu\text{mol}/\text{m}^2/\text{s}$ ) and red light (R, 50  $\mu\text{mol}/\text{m}^2/\text{s}$ ) for 30 min, respectively. Image collected and cropped by CiteAb from the following open publication (<https://pubmed.ncbi.nlm.nih.gov/35432407>), licensed under a CC-BY license. Not internally tested by Novus Biologicals.

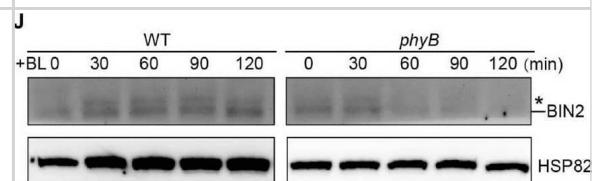
phyA and phyB mediate far-red and red lights inhibition of BL-induced degradation of BIN2 protein. (A,B) Western blotting assays showing phyA- and phyB-mediated far-red or red light inhibition of degradation of BIN2 protein. WT, phyA and phyB mutant seedlings were grown on MS plates in continuous darkness (DK) or far-red light (FR, 1  $\mu\text{mol}/\text{m}^2/\text{s}$ ) (A) or red light (R, 50  $\mu\text{mol}/\text{m}^2/\text{s}$ ) (B) for 5 days. (C,D) RT-qPCR assays showing the regulation of BIN2 expression by phyA or phyB in (A,B). Data correspond to the mean and standard deviation from three technical replicates. (E,F) Western blotting assays showing the effects of different exposure times of far-red or red light on the degradation of BIN2 protein. WT, phyA and phyB mutant seedlings were grown on MS plates in darkness for 5 days, and then exposed to far-red light (10  $\mu\text{mol}/\text{m}^2/\text{s}$ ) (E) or red light (50  $\mu\text{mol}/\text{m}^2/\text{s}$ ) (F) for the indicated lengths of time. (G,H) Western blot assays showing the effects of far-red or red light intensity on the degradation of BIN2 protein. WT, phyA and phyB mutant seedlings were grown on MS plates in darkness for 5 days, and then exposed to the indicated light intensities of far-red (G) or red light (H) for 6 h. (I,J) Western blot assays showing the effects of phyA or phyB on the BL-induced degradation of BIN2 protein. WT, phyA and phyB mutant seedlings were grown on MS plates supplemented with 2  $\mu\text{M}$  BRZ in darkness for 5 days, and then treated with 1  $\mu\text{M}$  BL, and then exposed to far-red (10  $\mu\text{mol}/\text{m}^2/\text{s}$ ) (I) or red light (50  $\mu\text{mol}/\text{m}^2/\text{s}$ ) (J) for the indicated lengths of time. Image collected and cropped by CiteAb from the following open publication (<https://pubmed.ncbi.nlm.nih.gov/35432407>), licensed under a CC-BY license. Not internally tested by Novus Biologicals.



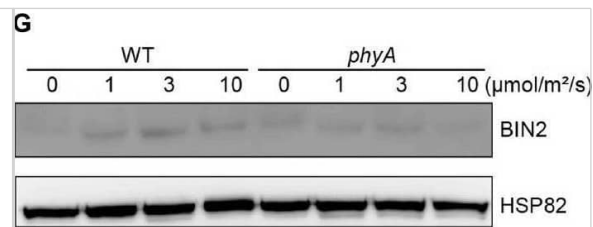
phyA and phyB mediate far-red and red lights inhibition of BL-induced degradation of BIN2 protein. (A,B) Western blotting assays showing phyA- and phyB-mediated far-red or red light inhibition of degradation of BIN2 protein. WT, phyA and phyB mutant seedlings were grown on MS plates in continuous darkness (DK) or far-red light (FR, 1  $\mu\text{mol}/\text{m}^2/\text{s}$ ) (A) or red light (R, 50  $\mu\text{mol}/\text{m}^2/\text{s}$ ) (B) for 5 days. (C,D) RT-qPCR assays showing the regulation of BIN2 expression by phyA or phyB in (A,B). Data correspond to the mean and standard deviation from three technical replicates. (E,F) Western blotting assays showing the effects of different exposure times of far-red or red light on the degradation of BIN2 protein. WT, phyA and phyB mutant seedlings were grown on MS plates in darkness for 5 days, and then exposed to far-red light (10  $\mu\text{mol}/\text{m}^2/\text{s}$ ) (E) or red light (50  $\mu\text{mol}/\text{m}^2/\text{s}$ ) (F) for the indicated lengths of time. (G,H) Western blot assays showing the effects of far-red or red light intensity on the degradation of BIN2 protein. WT, phyA and phyB mutant seedlings were grown on MS plates in darkness for 5 days, and then exposed to the indicated light intensities of far-red (G) or red light (H) for 6 h. (I,J) Western blot assays showing the effects of phyA or phyB on the BL-induced degradation of BIN2 protein. WT, phyA and phyB mutant seedlings were grown on MS plates supplemented with 2  $\mu\text{M}$  BRZ in darkness for 5 days, and then treated with 1  $\mu\text{M}$  BL, and then exposed to far-red (10  $\mu\text{mol}/\text{m}^2/\text{s}$ ) (I) or red light (50  $\mu\text{mol}/\text{m}^2/\text{s}$ ) (J) for the indicated lengths of time. Image collected and cropped by CiteAb from the following open publication (<https://pubmed.ncbi.nlm.nih.gov/35432407>), licensed under a CC-BY license. Not internally tested by Novus Biologicals.



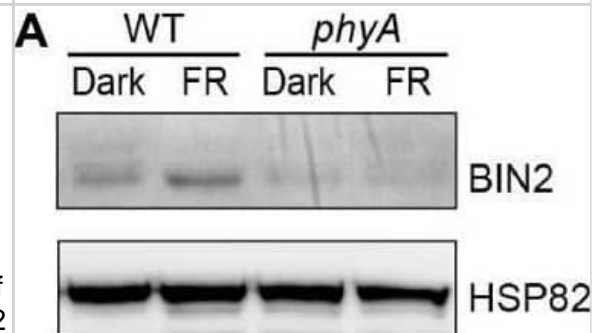
phyA and phyB mediate far-red and red lights inhibition of BL-induced degradation of BIN2 protein. (A,B) Western blotting assays showing phyA- and phyB-mediated far-red or red light inhibition of degradation of BIN2 protein. WT, phyA and phyB mutant seedlings were grown on MS plates in continuous darkness (DK) or far-red light (FR, 1  $\mu\text{mol}/\text{m}^2/\text{s}$ ) (A) or red light (R, 50  $\mu\text{mol}/\text{m}^2/\text{s}$ ) (B) for 5 days. (C,D) RT-qPCR assays showing the regulation of BIN2 expression by phyA or phyB in (A,B). Data correspond to the mean and standard deviation from three technical replicates. (E,F) Western blotting assays showing the effects of different exposure times of far-red or red light on the degradation of BIN2 protein. WT, phyA and phyB mutant seedlings were grown on MS plates in darkness for 5 days, and then exposed to far-red light (10  $\mu\text{mol}/\text{m}^2/\text{s}$ ) (E) or red light (50  $\mu\text{mol}/\text{m}^2/\text{s}$ ) (F) for the indicated lengths of time. (G,H) Western blot assays showing the effects of far-red or red light intensity on the degradation of BIN2 protein. WT, phyA and phyB mutant seedlings were grown on MS plates in darkness for 5 days, and then exposed to the indicated light intensities of far-red (G) or red light (H) for 6 h. (I,J) Western blot assays showing the effects of phyA or phyB on the BL-induced degradation of BIN2 protein. WT, phyA and phyB mutant seedlings were grown on MS plates supplemented with 2  $\mu\text{M}$  BRZ in darkness for 5 days, and then treated with 1  $\mu\text{M}$  BL, and then exposed to far-red (10  $\mu\text{mol}/\text{m}^2/\text{s}$ ) (I) or red light (50  $\mu\text{mol}/\text{m}^2/\text{s}$ ) (J) for the indicated lengths of time. Image collected and cropped by CiteAb from the following open publication (<https://pubmed.ncbi.nlm.nih.gov/35432407>), licensed under a CC-BY license. Not internally tested by Novus Biologicals.



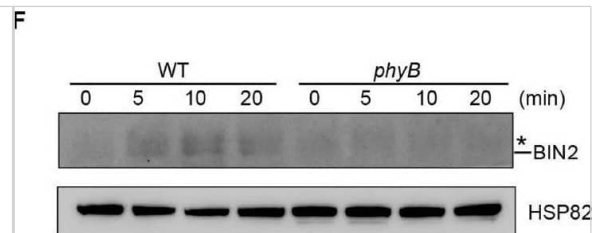
phyA and phyB mediate far-red and red lights inhibition of BL-induced degradation of BIN2 protein. (A,B) Western blotting assays showing phyA- and phyB-mediated far-red or red light inhibition of degradation of BIN2 protein. WT, phyA and phyB mutant seedlings were grown on MS plates in continuous darkness (DK) or far-red light (FR, 1  $\mu\text{mol}/\text{m}^2/\text{s}$ ) (A) or red light (R, 50  $\mu\text{mol}/\text{m}^2/\text{s}$ ) (B) for 5 days. (C,D) RT-qPCR assays showing the regulation of BIN2 expression by phyA or phyB in (A,B). Data correspond to the mean and standard deviation from three technical replicates. (E,F) Western blotting assays showing the effects of different exposure times of far-red or red light on the degradation of BIN2 protein. WT, phyA and phyB mutant seedlings were grown on MS plates in darkness for 5 days, and then exposed to far-red light (10  $\mu\text{mol}/\text{m}^2/\text{s}$ ) (E) or red light (50  $\mu\text{mol}/\text{m}^2/\text{s}$ ) (F) for the indicated lengths of time. (G,H) Western blot assays showing the effects of far-red or red light intensity on the degradation of BIN2 protein. WT, phyA and phyB mutant seedlings were grown on MS plates in darkness for 5 days, and then exposed to the indicated light intensities of far-red (G) or red light (H) for 6 h. (I,J) Western blot assays showing the effects of phyA or phyB on the BL-induced degradation of BIN2 protein. WT, phyA and phyB mutant seedlings were grown on MS plates supplemented with 2  $\mu\text{M}$  BRZ in darkness for 5 days, and then treated with 1  $\mu\text{M}$  BL, and then exposed to far-red (10  $\mu\text{mol}/\text{m}^2/\text{s}$ ) (I) or red light (50  $\mu\text{mol}/\text{m}^2/\text{s}$ ) (J) for the indicated lengths of time. Image collected and cropped by CiteAb from the following open publication (<https://pubmed.ncbi.nlm.nih.gov/35432407>), licensed under a CC-BY license. Not internally tested by Novus Biologicals.



phyA and phyB mediate far-red and red lights inhibition of BL-induced degradation of BIN2 protein. (A,B) Western blotting assays showing phyA- and phyB-mediated far-red or red light inhibition of degradation of BIN2 protein. WT, phyA and phyB mutant seedlings were grown on MS plates in continuous darkness (DK) or far-red light (FR, 1  $\mu\text{mol}/\text{m}^2/\text{s}$ ) (A) or red light (R, 50  $\mu\text{mol}/\text{m}^2/\text{s}$ ) (B) for 5 days. (C,D) RT-qPCR assays showing the regulation of BIN2 expression by phyA or phyB in (A,B). Data correspond to the mean and standard deviation from three technical replicates. (E,F) Western blotting assays showing the effects of different exposure times of far-red or red light on the degradation of BIN2 protein. WT, phyA and phyB mutant seedlings were grown on MS plates in darkness for 5 days, and then exposed to far-red light (10  $\mu\text{mol}/\text{m}^2/\text{s}$ ) (E) or red light (50  $\mu\text{mol}/\text{m}^2/\text{s}$ ) (F) for the indicated lengths of time. (G,H) Western blot assays showing the effects of far-red or red light intensity on the degradation of BIN2 protein. WT, phyA and phyB mutant seedlings were grown on MS plates in darkness for 5 days, and then exposed to the indicated light intensities of far-red (G) or red light (H) for 6 h. (I,J) Western blot assays showing the effects of phyA or phyB on the BL-induced degradation of BIN2 protein. WT, phyA and phyB mutant seedlings were grown on MS plates supplemented with 2  $\mu\text{M}$  BRZ in darkness for 5 days, and then treated with 1  $\mu\text{M}$  BL, and then exposed to far-red (10  $\mu\text{mol}/\text{m}^2/\text{s}$ ) (I) or red light (50  $\mu\text{mol}/\text{m}^2/\text{s}$ ) (J) for the indicated lengths of time. Image collected and cropped by CiteAb from the following open publication (<https://pubmed.ncbi.nlm.nih.gov/35432407>), licensed under a CC-BY license. Not internally tested by Novus Biologicals.



phyA and phyB mediate far-red and red lights inhibition of BL-induced degradation of BIN2 protein. (A,B) Western blotting assays showing phyA- and phyB-mediated far-red or red light inhibition of degradation of BIN2 protein. WT, phyA and phyB mutant seedlings were grown on MS plates in continuous darkness (DK) or far-red light (FR, 1  $\mu\text{mol}/\text{m}^2/\text{s}$ ) (A) or red light (R, 50  $\mu\text{mol}/\text{m}^2/\text{s}$ ) (B) for 5 days. (C,D) RT-qPCR assays showing the regulation of BIN2 expression by phyA or phyB in (A,B). Data correspond to the mean and standard deviation from three technical replicates. (E,F) Western blotting assays showing the effects of different exposure times of far-red or red light on the degradation of BIN2 protein. WT, phyA and phyB mutant seedlings were grown on MS plates in darkness for 5 days, and then exposed to far-red light (10  $\mu\text{mol}/\text{m}^2/\text{s}$ ) (E) or red light (50  $\mu\text{mol}/\text{m}^2/\text{s}$ ) (F) for the indicated lengths of time. (G,H) Western blot assays showing the effects of far-red or red light intensity on the degradation of BIN2 protein. WT, phyA and phyB mutant seedlings were grown on MS plates in darkness for 5 days, and then exposed to the indicated light intensities of far-red (G) or red light (H) for 6 h. (I,J) Western blot assays showing the effects of phyA or phyB on the BL-induced degradation of BIN2 protein. WT, phyA and phyB mutant seedlings were grown on MS plates supplemented with 2  $\mu\text{M}$  BRZ in darkness for 5 days, and then treated with 1  $\mu\text{M}$  BL, and then exposed to far-red (10  $\mu\text{mol}/\text{m}^2/\text{s}$ ) (I) or red light (50  $\mu\text{mol}/\text{m}^2/\text{s}$ ) (J) for the indicated lengths of time. Image collected and cropped by CiteAb from the following open publication (<https://pubmed.ncbi.nlm.nih.gov/35432407>), licensed under a CC-BY license. Not internally tested by Novus Biologicals.





### **Novus Biologicals USA**

10730 E. Briarwood Avenue  
Centennial, CO 80112  
USA  
Phone: 303.730.1950  
Toll Free: 1.888.506.6887  
Fax: 303.730.1966  
nb-customerservice@bio-techne.com

### **Bio-Techne Canada**

21 Canmotor Ave  
Toronto, ON M8Z 4E6  
Canada  
Phone: 905.827.6400  
Toll Free: 855.668.8722  
Fax: 905.827.6402  
canada.inquires@bio-techne.com

### **Bio-Techne Ltd**

19 Barton Lane  
Abingdon Science Park  
Abingdon, OX14 3NB, United Kingdom  
Phone: (44) (0) 1235 529449  
Free Phone: 0800 37 34 15  
Fax: (44) (0) 1235 533420  
info.EMEA@bio-techne.com

### **General Contact Information**

www.novusbio.com  
Technical Support: nb-technical@bio-techne.com  
Orders: nb-customerservice@bio-techne.com  
General: novus@novusbio.com

### **Products Related to NBP2-48690**

---

NBP2-48690PEP	BIN2 Recombinant Protein Antigen
NBP2-33376H	Blue Marker Antibody (6F4-F6) [HRP]
HAF008	Goat anti-Rabbit IgG Secondary Antibody [HRP]
NB7160	Goat anti-Rabbit IgG (H+L) Secondary Antibody [HRP]
NBP2-24891	Rabbit IgG Isotype Control

---

### **Limitations**

This product is for research use only and is not approved for use in humans or in clinical diagnosis. Primary Antibodies are guaranteed for 1 year from date of receipt.

For more information on our 100% guarantee, please visit [www.novusbio.com/guarantee](http://www.novusbio.com/guarantee)

Earn gift cards/discounts by submitting a review: [www.novusbio.com/reviews/submit/NBP2-48690](http://www.novusbio.com/reviews/submit/NBP2-48690)

Earn gift cards/discounts by submitting a publication using this product:  
[www.novusbio.com/publications](http://www.novusbio.com/publications)

