

# Product Datasheet

## EpCAM/TROP1 Antibody (EGP40/826) - IHC-Prediluted NBP2-48288

Unit Size: 7 ml

Store at 4C.

[www.novusbio.com](http://www.novusbio.com)



[technical@novusbio.com](mailto:technical@novusbio.com)

Protocols, Publications, Related Products, Reviews, Research Tools and Images at:  
[www.novusbio.com/NBP2-48288](http://www.novusbio.com/NBP2-48288)

Updated 9/9/2025 v.20.1

Earn rewards for product  
reviews and publications.

Submit a publication at [www.novusbio.com/publications](http://www.novusbio.com/publications)

Submit a review at [www.novusbio.com/reviews/destination/NBP2-48288](http://www.novusbio.com/reviews/destination/NBP2-48288)



**NBP2-48288****EpCAM/TROP1 Antibody (EGP40/826) - IHC-Prediluted**

<b>Product Information</b>	
<b>Unit Size</b>	7 ml
<b>Concentration</b>	Please see the vial label for concentration. If unlisted please contact technical services.
<b>Storage</b>	Store at 4C.
<b>Clonality</b>	Monoclonal
<b>Clone</b>	EGP40/826
<b>Preservative</b>	0.05% Sodium Azide
<b>Isotype</b>	IgG1 Kappa
<b>Purity</b>	Protein A or G purified
<b>Buffer</b>	10mM PBS and 0.05% BSA
<b>Target Molecular Weight</b>	41 kDa
<b>Product Description</b>	
<b>Description</b>	Novus Biologicals Mouse EpCAM/TROP1 Antibody (EGP40/826) - IHC-Prediluted (NBP2-44643) is a monoclonal antibody validated for use in IHC, WB and ICC/IF. All Novus Biologicals antibodies are covered by our 100% guarantee.
<b>Host</b>	Mouse
<b>Gene ID</b>	4072
<b>Gene Symbol</b>	EPCAM
<b>Species</b>	Human, Mouse (Negative), Rat (Negative)
<b>Marker</b>	Epithelial Marker
<b>Specificity/Sensitivity</b>	Recognizes a 40-43kDa transmembrane epithelial glycoprotein, identified as epithelial specific antigen (ESA), or epithelial cellular adhesion molecule (Ep-CAM). Ep-CAM is expressed on baso-lateral cell surface in most simple epithelia and a vast majority of carcinomas. This antibody has been used to distinguish adenocarcinoma from pleural mesothelioma and hepatocellular carcinoma. It is also useful in distinguishing serous carcinomas of the ovary from mesothelioma. This epithelial antigen plays an important role as a tumor-cell marker in lymph nodes from patients with esophageal carcinoma otherwise classified as node-negative. Epithelial antigen has also been suggested as a discriminator between basal cell and baso-squamous carcinomas, and squamous cell carcinoma of the skin.
<b>Immunogen</b>	A synthetic peptide (around aa 20-60) from the N-terminus of human TACSTD1 protein.
<b>Product Application Details</b>	
<b>Applications</b>	Western Blot, Immunohistochemistry-Paraffin, Immunocytochemistry/Immunofluorescence, Immunohistochemistry
<b>Recommended Dilutions</b>	Western Blot, Immunohistochemistry, Immunocytochemistry/Immunofluorescence, Immunohistochemistry-Paraffin

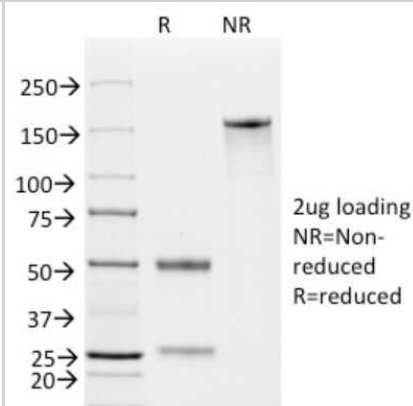
**Application Notes**

The prediluted antibody does not require any mixing, dilution, reconstitution, or titration; the antibody is ready-to-use and optimized for staining. Hu-chromosome location: 2q21. Molecular weight of antigen: 40-43kDa. Immunohistochemistry-Paraffin: 0.5 - 1 ug/ml for 30 minutes at RT; Staining of formalin-fixed tissues requires boiling tissue sections in 10mM Citrate Buffer, pH 6.0, for 10 - 20 min followed by cooling at RT for 20 minutes. The 7mL size is a pre-diluted size and no additional dilutions are required before using this item for the intended application.

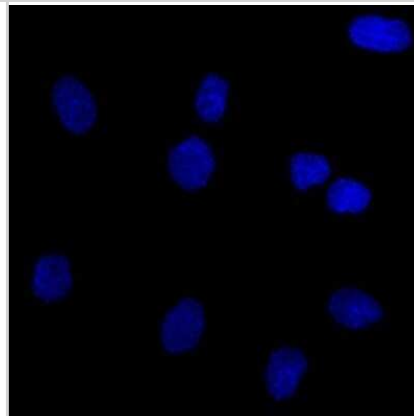


## Images

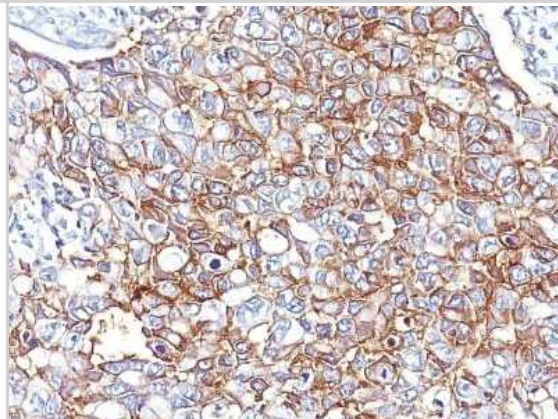
Western Blot: EpCAM/TROP1 Antibody (EGP40/826) - IHC-Prediluted [NBP2-48288] - SDS-Page: EpCAM/TROP1 Antibody (EGP40/826) [NBP2-44643]. Image using the standard format of this product.



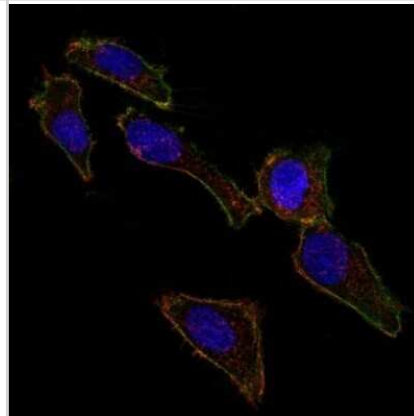
Immunocytochemistry/Immunofluorescence: EpCAM/TROP1 Antibody (EGP40/826) - IHC-Prediluted [NBP2-48288] - Confocal Immunofluorescent analysis of SK-OV-3 cells using AF488-labeled Isotype Control Monoclonal Antibody (IgG1) (Green). DAPI was used to stain the cell nuclei (blue). (Negative Control). Image using the standard format of this product.



Immunohistochemistry: EpCAM/TROP1 Antibody (EGP40/826) - IHC-Prediluted [NBP2-48288] - Human Breast Carcinoma stained with EpCAM Monoclonal Antibody (EGP40/826). Image using the standard format of this product.



Immunocytochemistry/Immunofluorescence: EpCAM/TROP1 Antibody (EGP40/826) - IHC-Prediluted [NBP2-48288] - Confocal Immunofluorescent analysis of SK-OV-3 cells using AF488-labeled EpCAM Monoclonal Antibody (EGP40/826) (Green). F-actin filaments were labeled with DyLight 554 Phalloidin (red). DAPI was used to stain the cell nuclei (blue). Image using the standard format of this product.





### **Novus Biologicals USA**

10730 E. Briarwood Avenue  
Centennial, CO 80112  
USA  
Phone: 303.730.1950  
Toll Free: 1.888.506.6887  
Fax: 303.730.1966  
nb-customerservice@bio-techne.com

### **Bio-Techne Canada**

21 Canmotor Ave  
Toronto, ON M8Z 4E6  
Canada  
Phone: 905.827.6400  
Toll Free: 855.668.8722  
Fax: 905.827.6402  
canada.inquires@bio-techne.com

### **Bio-Techne Ltd**

19 Barton Lane  
Abingdon Science Park  
Abingdon, OX14 3NB, United Kingdom  
Phone: (44) (0) 1235 529449  
Free Phone: 0800 37 34 15  
Fax: (44) (0) 1235 533420  
info.EMEA@bio-techne.com

### **General Contact Information**

www.novusbio.com  
Technical Support: nb-technical@bio-techne.com  
Orders: nb-customerservice@bio-techne.com  
General: novus@novusbio.com

### **Products Related to NBP2-48288**

---

NBP2-33376H	Blue Marker Antibody (6F4-F6) [HRP]
HAF007	Goat anti-Mouse IgG Secondary Antibody [HRP]
NB7539	Goat anti-Mouse IgG (H+L) Secondary Antibody [HRP]
NBP1-43319-0.5mg	Mouse IgG1 Kappa Isotype Control (P3.6.2.8.1)

---

### **Limitations**

This product is for research use only and is not approved for use in humans or in clinical diagnosis. Primary Antibodies are guaranteed for 1 year from date of receipt.

For more information on our 100% guarantee, please visit [www.novusbio.com/guarantee](http://www.novusbio.com/guarantee)

Earn gift cards/discounts by submitting a review: [www.novusbio.com/reviews/submit/NBP2-48288](http://www.novusbio.com/reviews/submit/NBP2-48288)

Earn gift cards/discounts by submitting a publication using this product:  
[www.novusbio.com/publications](http://www.novusbio.com/publications)

