

# Product Datasheet

## Cytokeratin 19 Antibody (KRT19/799 + KRT19/800) - IHC- Prediluted NBP2-48101

Unit Size: 7 ml

Store at 4C.

[www.novusbio.com](http://www.novusbio.com)



[technical@novusbio.com](mailto:technical@novusbio.com)

Protocols, Publications, Related Products, Reviews, Research Tools and Images at:  
[www.novusbio.com/NBP2-48101](http://www.novusbio.com/NBP2-48101)

Updated 10/23/2024 v.20.1

Earn rewards for product  
reviews and publications.

Submit a publication at [www.novusbio.com/publications](http://www.novusbio.com/publications)

Submit a review at [www.novusbio.com/reviews/destination/NBP2-48101](http://www.novusbio.com/reviews/destination/NBP2-48101)



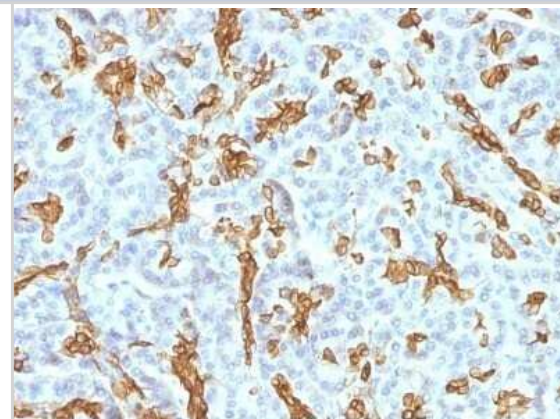
**NBP2-48101**

Cytokeratin 19 Antibody (KRT19/799 + KRT19/800) - IHC-Prediluted

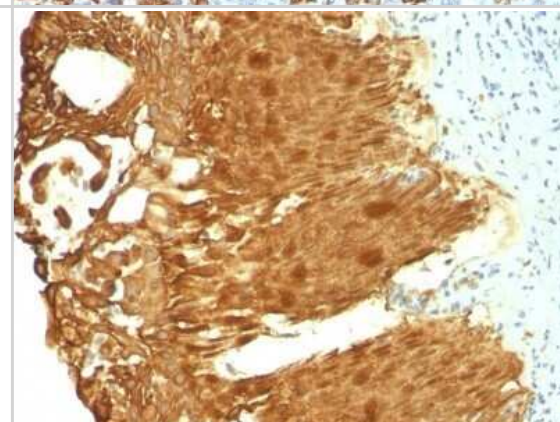
<b>Product Information</b>	
<b>Unit Size</b>	7 ml
<b>Concentration</b>	Please see the vial label for concentration. If unlisted please contact technical services.
<b>Storage</b>	Store at 4C.
<b>Clonality</b>	Monoclonal
<b>Clone</b>	KRT19/799 + KRT19/800
<b>Preservative</b>	0.05% Sodium Azide
<b>Isotype</b>	IgG2a Lambda/IgG1 Kappa
<b>Purity</b>	Protein A or G purified
<b>Buffer</b>	10 mM PBS with 0.05% BSA
<b>Target Molecular Weight</b>	40 kDa
<b>Product Description</b>	
<b>Description</b>	The prediluted antibody does not require any mixing, dilution, reconstitution, or titration; the antibody is ready-to-use and optimized for staining.
<b>Host</b>	Mouse
<b>Gene ID</b>	3880
<b>Gene Symbol</b>	KRT19
<b>Species</b>	Human, Mouse
<b>Marker</b>	Pancreatic Stem Cell Marker
<b>Specificity/Sensitivity</b>	Recognizes a protein of 40kDa, identified as cytokeratin-19 (CK19), which is expressed in sweat gland, mammary gland ductal and secretory cells, bile ducts, gastrointestinal tract, bladder urothelium, oral epithelia, esophagus, and ectocervical epithelium. Anti-CK19 reacts with a wide variety of epithelial malignancies including adenocarcinomas of the colon, stomach, pancreas, biliary tract, liver, and breast. Perhaps the most useful application is the identification of thyroid carcinoma of the papillary type, although 50%-60% of follicular carcinomas are also labeled. Anti-CK19 is a useful marker for detection of tumor cells in lymph nodes, peripheral blood, bone marrow and breast cancer.
<b>Immunogen</b>	Recombinant full-length human Cytokeratin 19 protein (Uniprot: P08727)
<b>Product Application Details</b>	
<b>Applications</b>	Immunohistochemistry, Immunohistochemistry-Paraffin
<b>Recommended Dilutions</b>	Immunohistochemistry, Immunohistochemistry-Paraffin
<b>Application Notes</b>	Immunohistochemistry (Formalin-fixed): 0.1-0.2ug/ml for 30 min at RT. Staining of formalin-fixed tissues requires heating tissue sections in 10mM Tris with 1mM EDTA, pH 9.0, for 45 min at 95C followed by cooling at RT for 20 minutes. Optimal dilution for a specific application should be determined.

## Images

Immunohistochemistry-Paraffin: Cytokeratin 19 Antibody (KRT19/799 + KRT19/800) - IHC-Prediluted [NBP2-48101] - Human Pancreas stained with Cytokeratin 19 Monoclonal Antibody (KRT19/799 + KRT19/800)



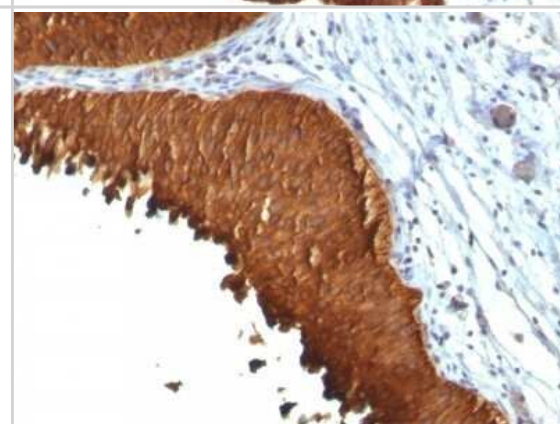
Immunohistochemistry-Paraffin: Cytokeratin 19 Antibody (KRT19/799 + KRT19/800) - IHC-Prediluted [NBP2-48101] - Formalin-fixed, paraffin-embedded human Cervical Carcinoma stained with Cytokeratin 19 Antibody (KRT19/799 + KRT19/800)



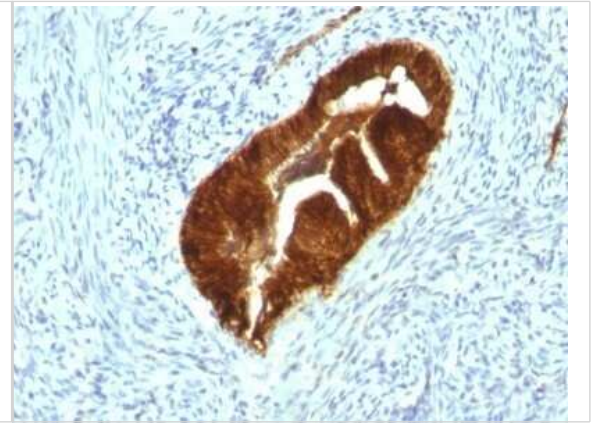
Immunohistochemistry-Paraffin: Cytokeratin 19 Antibody (KRT19/799 + KRT19/800) - IHC-Prediluted [NBP2-48101] - Human Ovarian Carcinoma stained with Cytokeratin 19 Monoclonal Antibody (KRT19/799 + KRT19/800)



Immunohistochemistry-Paraffin: Cytokeratin 19 Antibody (KRT19/799 + KRT19/800) - IHC-Prediluted [NBP2-48101] - Human Bladder Carcinoma stained with Cytokeratin 19 Monoclonal Antibody (KRT19/799 + KRT19/800)



Immunohistochemistry-Paraffin: Cytokeratin 19 Antibody (KRT19/799 + KRT19/800) - IHC-Prediluted [NBP2-48101] - Human Endometrial Carcinoma stained with Cytokeratin 19 Monoclonal Antibody (KRT19/799 + KRT19/800)





### **Novus Biologicals USA**

10730 E. Briarwood Avenue  
Centennial, CO 80112  
USA  
Phone: 303.730.1950  
Toll Free: 1.888.506.6887  
Fax: 303.730.1966  
nb-customerservice@bio-techne.com

### **Bio-Techne Canada**

21 Canmotor Ave  
Toronto, ON M8Z 4E6  
Canada  
Phone: 905.827.6400  
Toll Free: 855.668.8722  
Fax: 905.827.6402  
canada.inquires@bio-techne.com

### **Bio-Techne Ltd**

19 Barton Lane  
Abingdon Science Park  
Abingdon, OX14 3NB, United Kingdom  
Phone: (44) (0) 1235 529449  
Free Phone: 0800 37 34 15  
Fax: (44) (0) 1235 533420  
info.EMEA@bio-techne.com

### **General Contact Information**

www.novusbio.com  
Technical Support: nb-technical@bio-techne.com  
Orders: nb-customerservice@bio-techne.com  
General: novus@novusbio.com

### **Products Related to NBP2-48101**

---

HAF007	Goat anti-Mouse IgG Secondary Antibody [HRP]
NB720-B	Rabbit anti-Mouse IgG (H+L) Secondary Antibody [Biotin]
NBP1-78278PEP	Cytokeratin 19 Antibody Blocking Peptide
1129-ER-050	ErbB2/Her2 [Unconjugated]

---

### **Limitations**

This product is for research use only and is not approved for use in humans or in clinical diagnosis. Primary Antibodies are guaranteed for 1 year from date of receipt.

For more information on our 100% guarantee, please visit [www.novusbio.com/guarantee](http://www.novusbio.com/guarantee)

Earn gift cards/discounts by submitting a review: [www.novusbio.com/reviews/submit/NBP2-48101](http://www.novusbio.com/reviews/submit/NBP2-48101)

Earn gift cards/discounts by submitting a publication using this product:  
[www.novusbio.com/publications](http://www.novusbio.com/publications)

