

Product Datasheet

CHN 1 Antibody (OTI2G6) NBP2-46290

Unit Size: 0.1 ml

Store at -20C. Avoid freeze-thaw cycles.

www.novusbio.com



technical@novusbio.com

Protocols, Publications, Related Products, Reviews, Research Tools and Images at:
www.novusbio.com/NBP2-46290

Updated 9/9/2025 v.20.1

Earn rewards for product
reviews and publications.

Submit a publication at www.novusbio.com/publications

Submit a review at www.novusbio.com/reviews/destination/NBP2-46290



NBP2-46290

CHN 1 Antibody (OTI2G6)

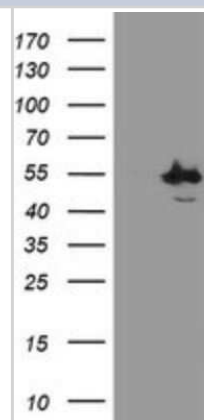
Product Information	
Unit Size	0.1 ml
Concentration	1 mg/ml
Storage	Store at -20C. Avoid freeze-thaw cycles.
Clonality	Monoclonal
Clone	OTI2G6
Preservative	0.02% Sodium Azide
Isotype	IgG2a
Purity	Immunogen affinity purified
Buffer	PBS (pH 7.3), 1.0% BSA and 50% Glycerol
Target Molecular Weight	53 kDa

Product Description	
Description	Novus Biologicals Mouse CHN 1 Antibody (OTI2G6) (NBP2-46290) is a monoclonal antibody validated for use in IHC, WB and ICC/IF. All Novus Biologicals antibodies are covered by our 100% guarantee.
Host	Mouse
Gene ID	1123
Gene Symbol	CHN1
Species	Human, Mouse, Rat
Reactivity Notes	Please note that this antibody is reactive to Mouse and derived from the same host, Mouse. Mouse-On-Mouse blocking reagent may be needed for IHC and ICC experiments to reduce high background signal. You can find these reagents under catalog numbers PK-2200-NB and MP-2400-NB. Please contact Technical Support if you have any questions.
Immunogen	Full length human recombinant protein of human CHN1(NP_001813) produced in HEK293T cell.

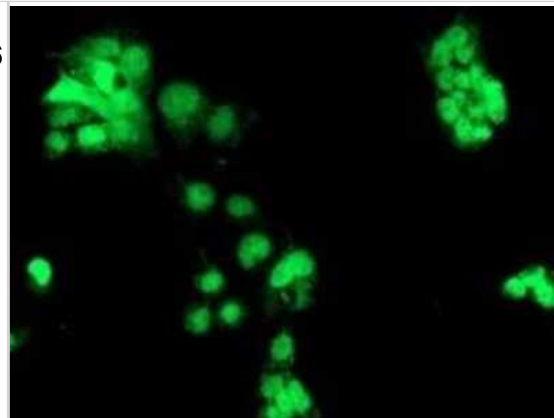
Product Application Details	
Applications	Western Blot, Immunohistochemistry-Paraffin, Immunocytochemistry/Immunofluorescence, Immunohistochemistry
Recommended Dilutions	Western Blot 1:2000, Immunohistochemistry 1:150, Immunocytochemistry/Immunofluorescence 1:100, Immunohistochemistry-Paraffin 1:150

Images

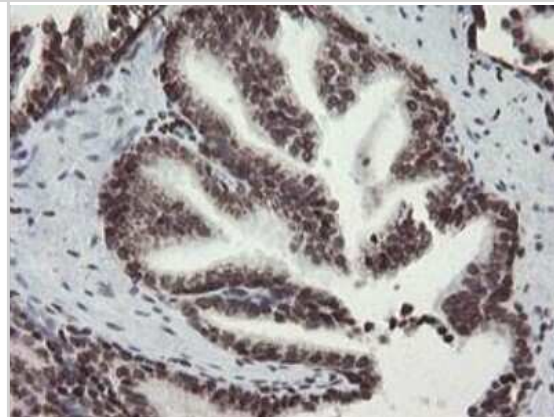
Western Blot: CHN 1 Antibody (OTI2G6) [NBP2-46290] - Analysis of HEK293T cells were transfected with the pCMV6-ENTRY control (Left lane) or pCMV6-ENTRY CHN 1.



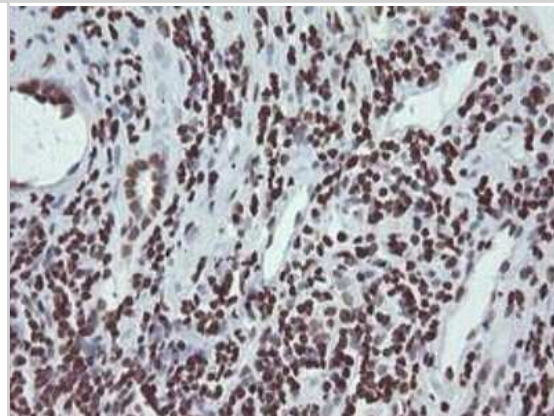
Immunocytochemistry/Immunofluorescence: CHN 1 Antibody (OT12G6) [NBP2-46290] - Analysis of COS7 cells transiently transfected by pCMV6-ENTRY CHN 1.



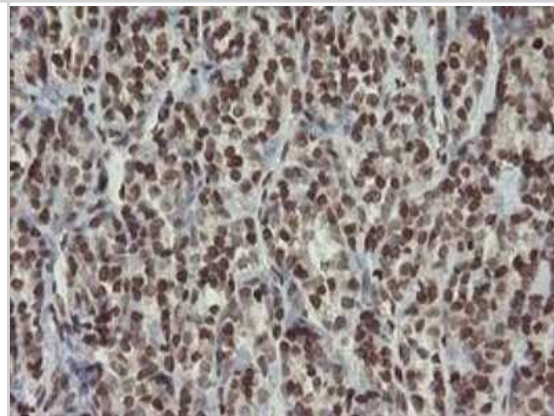
Immunohistochemistry-Paraffin: CHN 1 Antibody (OT12G6) [NBP2-46290] - Analysis of Human prostate tissue.



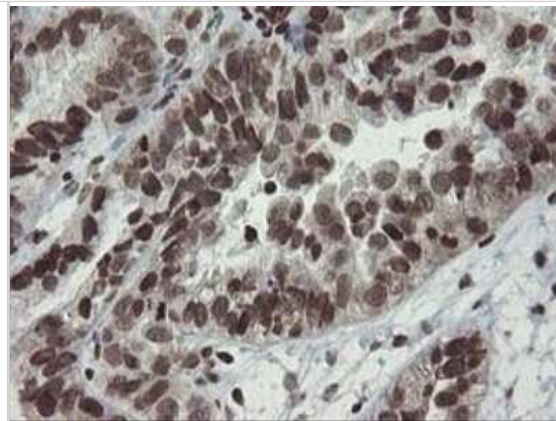
Immunohistochemistry-Paraffin: CHN 1 Antibody (OT12G6) [NBP2-46290] - Analysis of Carcinoma of Human kidney tissue.



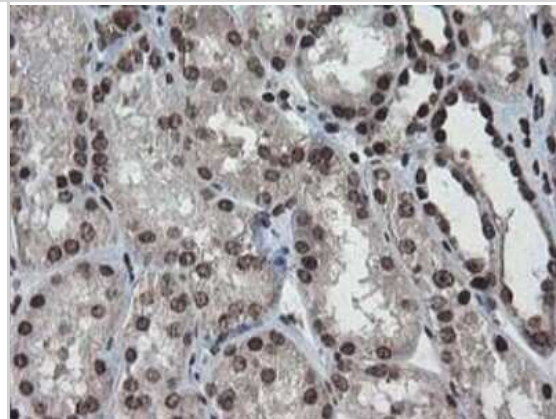
Immunohistochemistry-Paraffin: CHN 1 Antibody (OT12G6) [NBP2-46290] - Analysis of Carcinoma of Human thyroid tissue.



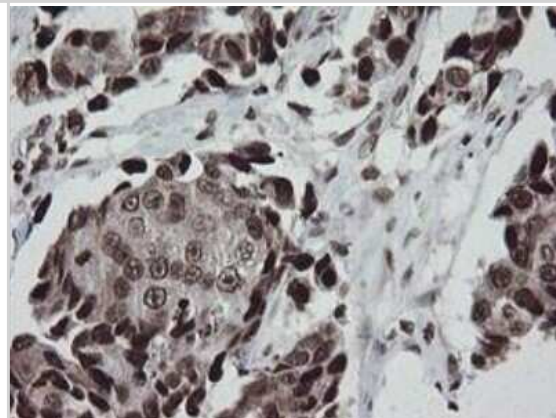
Immunohistochemistry-Paraffin: CHN 1 Antibody (OT12G6) [NBP2-46290] - Analysis of Adenocarcinoma of Human ovary tissue using CHN1 mouse monoclonal antibody.



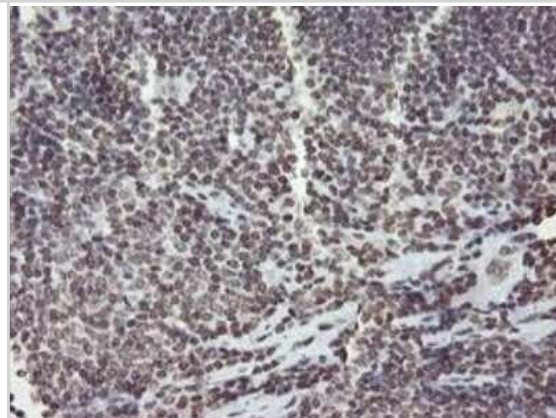
Immunohistochemistry-Paraffin: CHN 1 Antibody (OT12G6) [NBP2-46290] - Analysis of Human Kidney tissue.



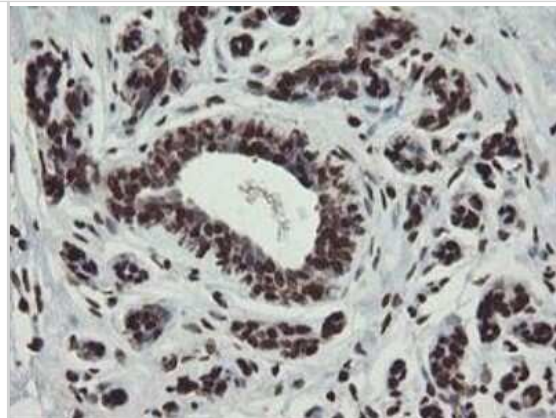
Immunohistochemistry-Paraffin: CHN 1 Antibody (OT12G6) [NBP2-46290] - Analysis of Adenocarcinoma of Human breast tissue.



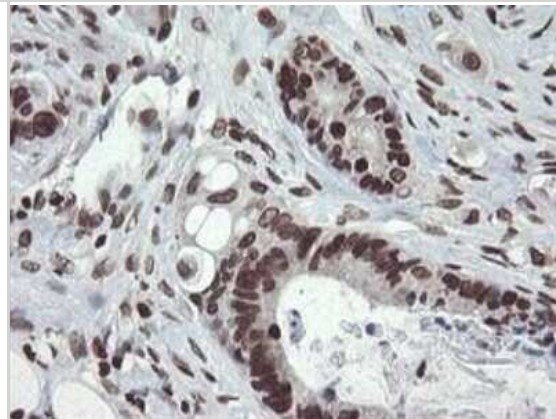
Immunohistochemistry-Paraffin: CHN 1 Antibody (OT12G6) [NBP2-46290] - Analysis of Human lymphoma tissue.



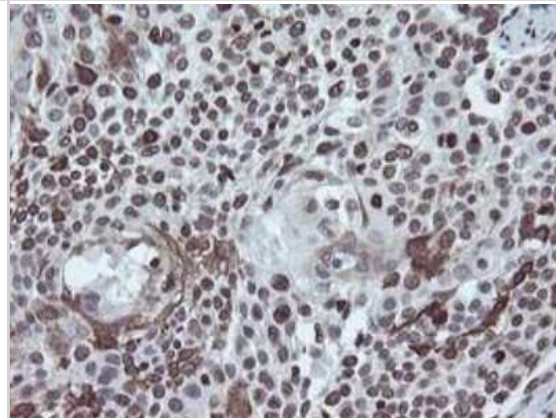
Immunohistochemistry-Paraffin: CHN 1 Antibody (OT12G6) [NBP2-46290] - Analysis of Human breast tissue.



Immunohistochemistry-Paraffin: CHN 1 Antibody (OT12G6) [NBP2-46290] - Analysis of Adenocarcinoma of Human colon tissue.



Immunohistochemistry-Paraffin: CHN 1 Antibody (OT12G6) [NBP2-46290] - Analysis of Carcinoma of Human bladder tissue.



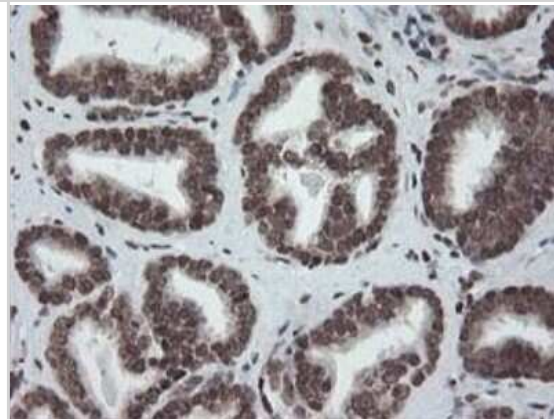
Immunohistochemistry-Paraffin: CHN 1 Antibody (OT12G6) [NBP2-46290] - Analysis of Human liver tissue.



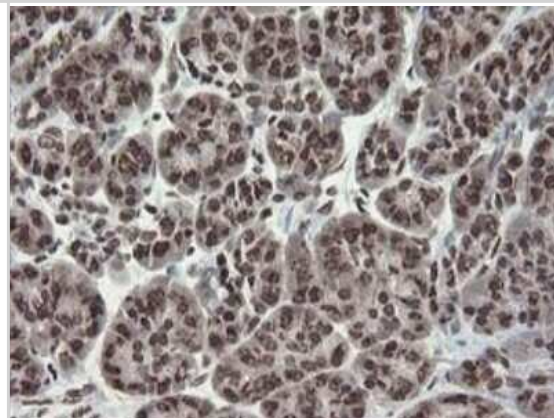
Immunohistochemistry-Paraffin: CHN 1 Antibody (OT12G6) [NBP2-46290] - Analysis of Adenocarcinoma of Human endometrium tissue.



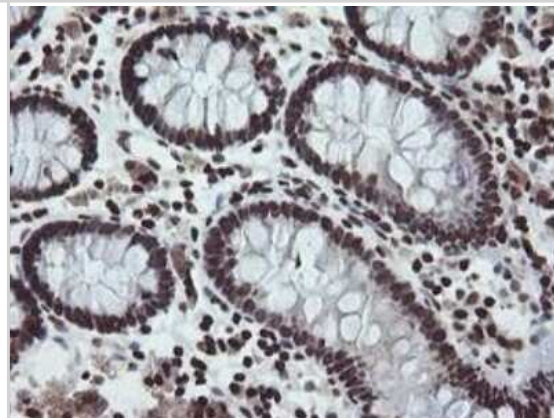
Immunohistochemistry-Paraffin: CHN 1 Antibody (OT12G6) [NBP2-46290] - Analysis of Carcinoma of Human prostate tissue.



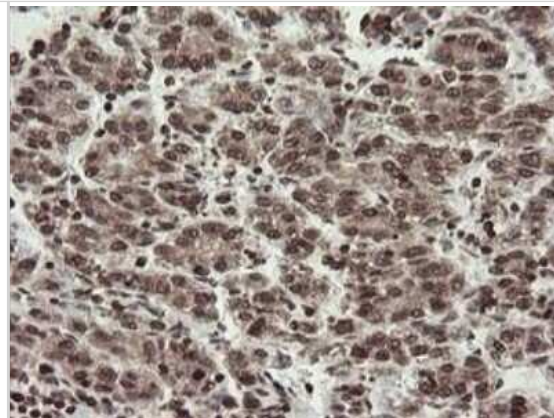
Immunohistochemistry-Paraffin: CHN 1 Antibody (OT12G6) [NBP2-46290] - Analysis of Human pancreas tissue.



Immunohistochemistry-Paraffin: CHN 1 Antibody (OT12G6) [NBP2-46290] - Analysis of Human colon tissue.



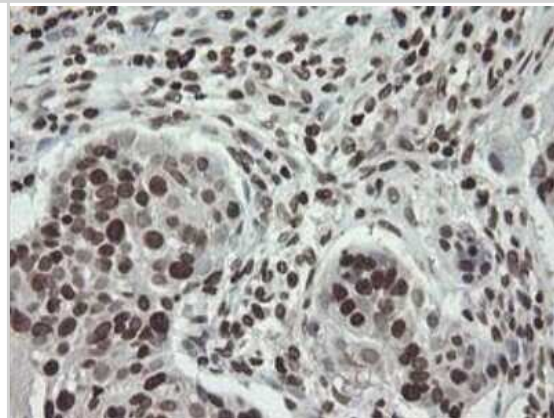
Immunohistochemistry-Paraffin: CHN 1 Antibody (OT12G6) [NBP2-46290] - Analysis of Carcinoma of Human liver.



Immunohistochemistry-Paraffin: CHN 1 Antibody (OT12G6) [NBP2-46290] - Analysis of Human lung tissue.



Immunohistochemistry-Paraffin: CHN 1 Antibody (OT12G6) [NBP2-46290] - Analysis of Carcinoma of Human lung tissue.





Novus Biologicals USA

10730 E. Briarwood Avenue
Centennial, CO 80112
USA
Phone: 303.730.1950
Toll Free: 1.888.506.6887
Fax: 303.730.1966
nb-customerservice@bio-techne.com

Bio-Techne Canada

21 Canmotor Ave
Toronto, ON M8Z 4E6
Canada
Phone: 905.827.6400
Toll Free: 855.668.8722
Fax: 905.827.6402
canada.inquires@bio-techne.com

Bio-Techne Ltd

19 Barton Lane
Abingdon Science Park
Abingdon, OX14 3NB, United Kingdom
Phone: (44) (0) 1235 529449
Free Phone: 0800 37 34 15
Fax: (44) (0) 1235 533420
info.EMEA@bio-techne.com

General Contact Information

www.novusbio.com
Technical Support: nb-technical@bio-techne.com
Orders: nb-customerservice@bio-techne.com
General: novus@novusbio.com

Products Related to NBP2-46290

NBP2-33376H	Blue Marker Antibody (6F4-F6) [HRP]
HAF007	Goat anti-Mouse IgG Secondary Antibody [HRP]
NB7539	Goat anti-Mouse IgG (H+L) Secondary Antibody [HRP]
NBP1-96778	Mouse IgG2a Isotype Control (M2A)

Limitations

This product is for research use only and is not approved for use in humans or in clinical diagnosis. Primary Antibodies are guaranteed for 1 year from date of receipt.

For more information on our 100% guarantee, please visit www.novusbio.com/guarantee

Earn gift cards/discounts by submitting a review: www.novusbio.com/reviews/submit/NBP2-46290

Earn gift cards/discounts by submitting a publication using this product:
www.novusbio.com/publications

