

Product Datasheet

CD68/SR-D1 Antibody (OT11E6) NBP2-46168

Unit Size: 0.1 ml

Store at -20C. Avoid freeze-thaw cycles.

www.novusbio.com



technical@novusbio.com

Protocols, Publications, Related Products, Reviews, Research Tools and Images at:
www.novusbio.com/NBP2-46168

Updated 9/9/2025 v.20.1

Earn rewards for product
reviews and publications.

Submit a publication at www.novusbio.com/publications

Submit a review at www.novusbio.com/reviews/destination/NBP2-46168



NBP2-46168

CD68/SR-D1 Antibody (OTI1E6)

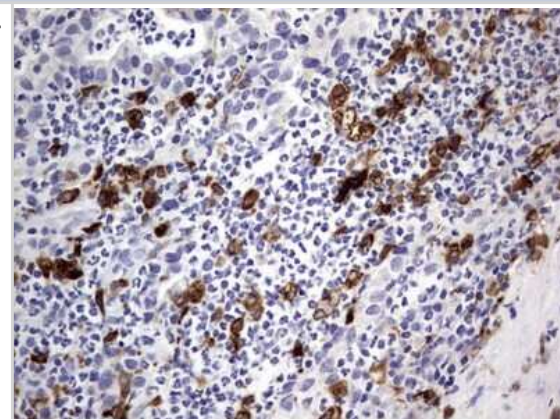
Product Information	
Unit Size	0.1 ml
Concentration	1 mg/ml
Storage	Store at -20C. Avoid freeze-thaw cycles.
Clonality	Monoclonal
Clone	OTI1E6
Preservative	0.02% Sodium Azide
Isotype	IgG2a
Purity	Immunogen affinity purified
Buffer	PBS (pH 7.3), 1.0% BSA and 50% Glycerol


Product Description	
Description	Novus Biologicals Mouse CD68/SR-D1 Antibody (OTI1E6) (NBP2-46168) is a monoclonal antibody validated for use in IHC and WB. All Novus Biologicals antibodies are covered by our 100% guarantee.
Host	Mouse
Gene ID	968
Gene Symbol	CD68
Species	Human
Immunogen	This CD68/SR-D1 Antibody (OTI1E6) was developed against human recombinant protein fragment corresponding to amino acids 22-319 of human CD68 (NP_001242) produced in SF9 cell.

Product Application Details	
Applications	Western Blot, Immunohistochemistry-Paraffin, Immunohistochemistry
Recommended Dilutions	Western Blot 1:2000, Immunohistochemistry 1:150, Immunohistochemistry-Paraffin

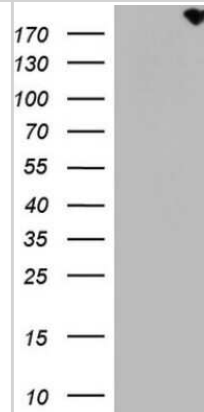
Images

Immunohistochemistry: CD68/SR-D1 Antibody (OTI1E6) [NBP2-46168] - CD68/SR-D1 Antibody (1E6) [NBP2-46168] - Analysis of Human lymph node tissue.

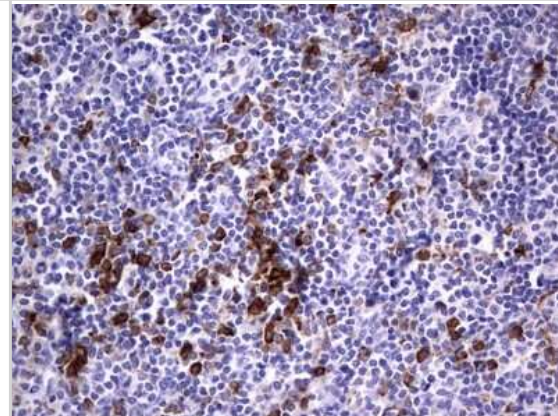


Immunohistochemistry: CD68/SR-D1 Antibody (OT1E6) [NBP2-46168] -  CD68/SR-D1 Antibody (1E6) [NBP2-46168] - Analysis of Human lymphoma tissue.

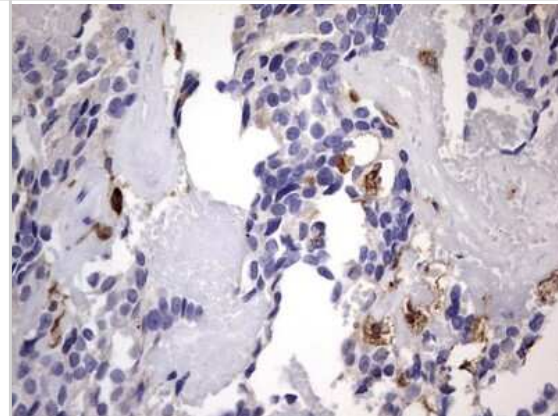
Western Blot: CD68/SR-D1 Antibody (1E6) [NBP2-46168] - Analysis of HEK293T cells were transfected with the pCMV6-ENTRY control (Left lane) or pCMV6-ENTRY CD68.



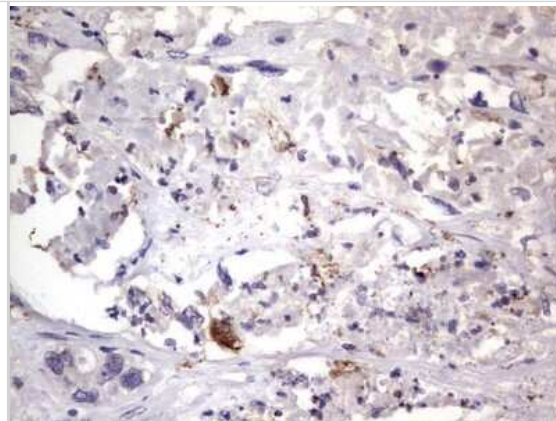
Immunohistochemistry: CD68/SR-D1 Antibody (1E6) [NBP2-46168] - Analysis of Human tonsil tissue.



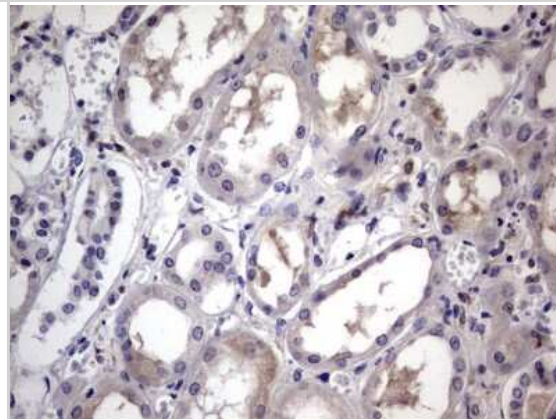
Immunohistochemistry: CD68/SR-D1 Antibody (1E6) [NBP2-46168] - Analysis of Adenocarcinoma of Human breast tissue.



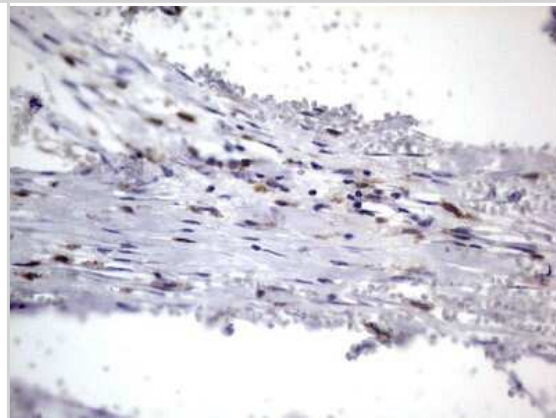
Immunohistochemistry: CD68/SR-D1 Antibody (1E6) [NBP2-46168] - Analysis of Adenocarcinoma of Human colon tissue.



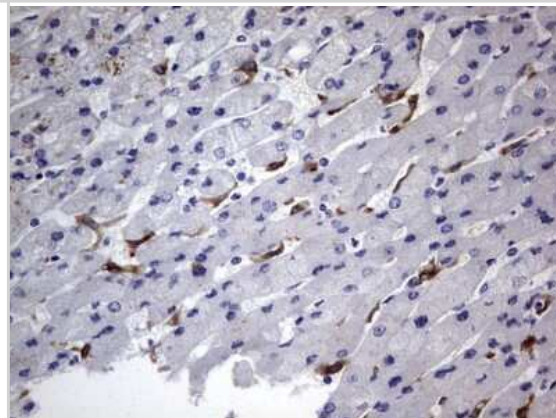
Immunohistochemistry: CD68/SR-D1 Antibody (1E6) [NBP2-46168] - Analysis of Human Kidney tissue.



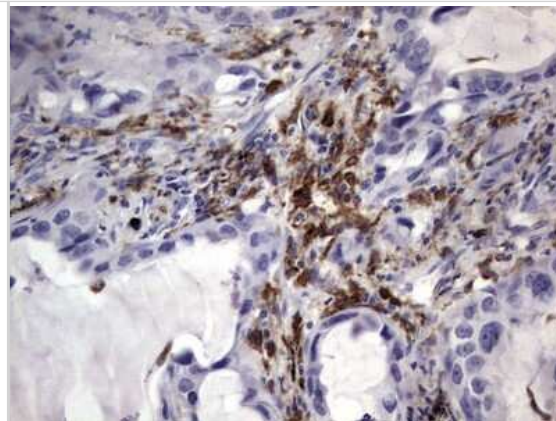
Immunohistochemistry: CD68/SR-D1 Antibody (1E6) [NBP2-46168] - Analysis of Carcinoma of Human kidney tissue.



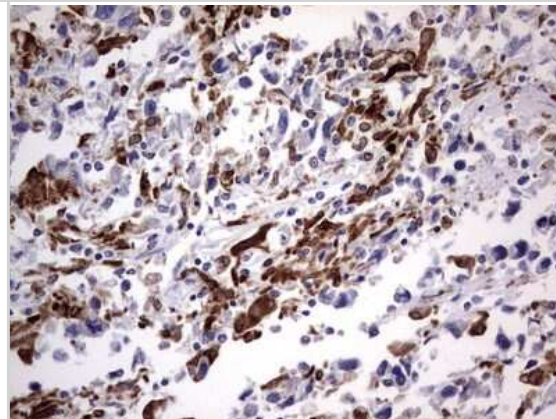
Immunohistochemistry: CD68/SR-D1 Antibody (1E6) [NBP2-46168] - Analysis of Human liver tissue.



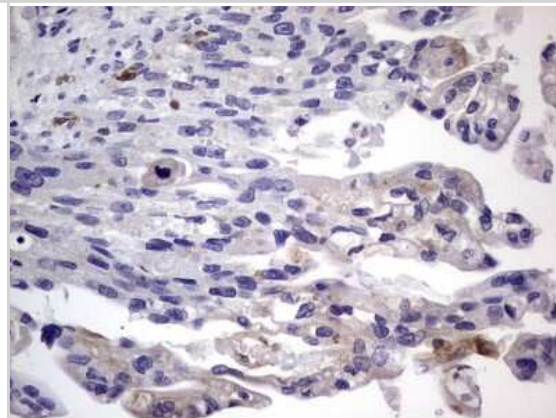
Immunohistochemistry: CD68/SR-D1 Antibody (1E6) [NBP2-46168] - Analysis of Carcinoma of Human lung tissue.



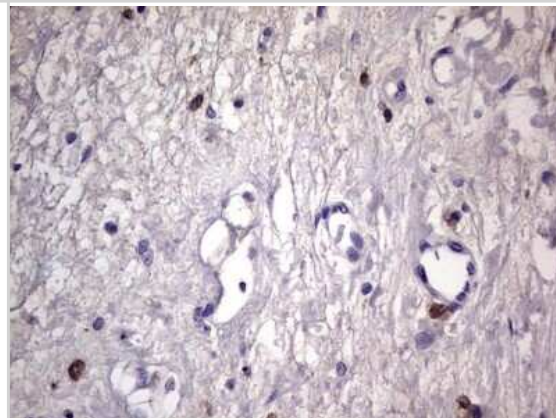
Immunohistochemistry: CD68/SR-D1 Antibody (1E6) [NBP2-46168] - Analysis of Adenocarcinoma of Human ovary tissue.



Immunohistochemistry: CD68/SR-D1 Antibody (1E6) [NBP2-46168] - Analysis of Carcinoma of Human pancreas tissue.



Immunohistochemistry: CD68/SR-D1 Antibody (1E6) [NBP2-46168] - Analysis of Human bladder tissue.





Novus Biologicals USA

10730 E. Briarwood Avenue
Centennial, CO 80112
USA
Phone: 303.730.1950
Toll Free: 1.888.506.6887
Fax: 303.730.1966
nb-customerservice@bio-techne.com

Bio-Techne Canada

21 Canmotor Ave
Toronto, ON M8Z 4E6
Canada
Phone: 905.827.6400
Toll Free: 855.668.8722
Fax: 905.827.6402
canada.inquires@bio-techne.com

Bio-Techne Ltd

19 Barton Lane
Abingdon Science Park
Abingdon, OX14 3NB, United Kingdom
Phone: (44) (0) 1235 529449
Free Phone: 0800 37 34 15
Fax: (44) (0) 1235 533420
info.EMEA@bio-techne.com

General Contact Information

www.novusbio.com
Technical Support: nb-technical@bio-techne.com
Orders: nb-customerservice@bio-techne.com
General: novus@novusbio.com

Products Related to NBP2-46168

NBP2-33376H	Blue Marker Antibody (6F4-F6) [HRP]
HAF007	Goat anti-Mouse IgG Secondary Antibody [HRP]
NB7539	Goat anti-Mouse IgG (H+L) Secondary Antibody [HRP]
NBP1-96778	Mouse IgG2a Isotype Control (M2A)

Limitations

This product is for research use only and is not approved for use in humans or in clinical diagnosis. Primary Antibodies are guaranteed for 1 year from date of receipt.

For more information on our 100% guarantee, please visit www.novusbio.com/guarantee

Earn gift cards/discounts by submitting a review: www.novusbio.com/reviews/submit/NBP2-46168

Earn gift cards/discounts by submitting a publication using this product:
www.novusbio.com/publications

