

Product Datasheet

Indoleamine 2,3-dioxygenase/IDO Antibody (OTI2B5) NBP2-46020

Unit Size: 0.1 ml

Store at -20C. Avoid freeze-thaw cycles.

www.novusbio.com



technical@novusbio.com

Protocols, Publications, Related Products, Reviews, Research Tools and Images at:
www.novusbio.com/NBP2-46020

Updated 9/9/2025 v.20.1

Earn rewards for product
reviews and publications.

Submit a publication at www.novusbio.com/publications

Submit a review at www.novusbio.com/reviews/destination/NBP2-46020



NBP2-46020

Indoleamine 2,3-dioxygenase/IDO Antibody (OTI2B5)

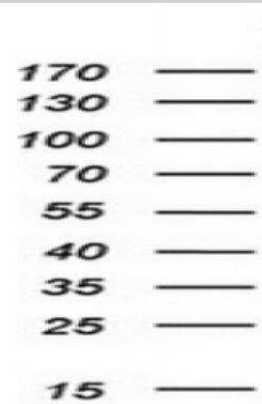
Product Information	
Unit Size	0.1 ml
Concentration	1 mg/ml
Storage	Store at -20C. Avoid freeze-thaw cycles.
Clonality	Monoclonal
Clone	OTI2B5
Preservative	0.02% Sodium Azide
Isotype	IgG1
Purity	Immunogen affinity purified
Buffer	PBS (pH 7.3), 1.0% BSA and 50% Glycerol
Target Molecular Weight	45.1 kDa

Product Description	
Description	Novus Biologicals Mouse Indoleamine 2,3-dioxygenase/IDO Antibody (OTI2B5) (NBP2-46020) is a monoclonal antibody validated for use in IHC, WB and ICC/IF. All Novus Biologicals antibodies are covered by our 100% guarantee.
Host	Mouse
Gene ID	3620
Gene Symbol	IDO1
Species	Human
Immunogen	Full length human recombinant protein of human IDO1(NP_002155) produced in HEK293T cell.

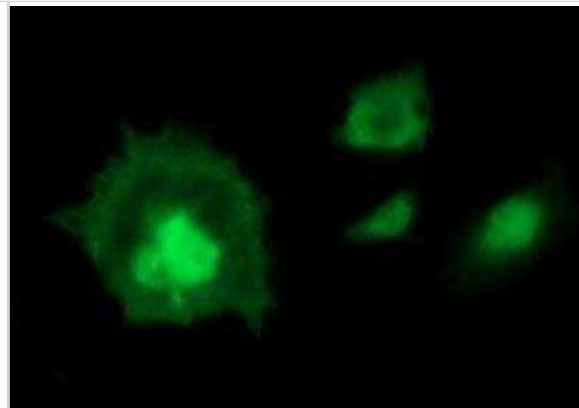
Product Application Details	
Applications	Western Blot, Immunohistochemistry-Paraffin, Immunocytochemistry/Immunofluorescence, Immunohistochemistry
Recommended Dilutions	Western Blot 1:4000, Immunohistochemistry 1:150, Immunocytochemistry/Immunofluorescence 1:100, Immunohistochemistry-Paraffin 1:150
Application Notes	WB application notes: for overexpressing samples up to a 1:4000 dilution can be used. For detecting endogenous protein, a starting dilution of 1:200 will be necessary.

Images

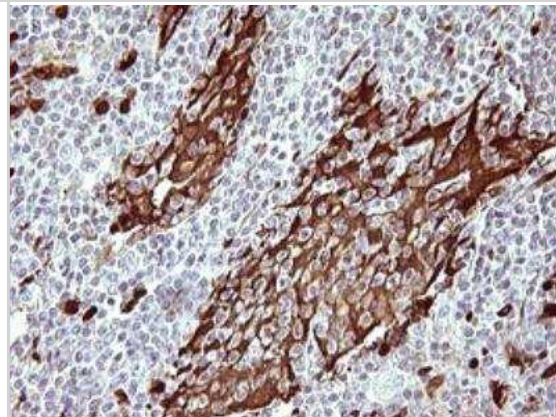
Western Blot: Indoleamine 2,3-dioxygenase/IDO Antibody (2B5) [NBP2-46020] - Analysis of extracts (10ug) from 2 different cell lines by using anti-IDO1 monoclonal antibody at 1:200.



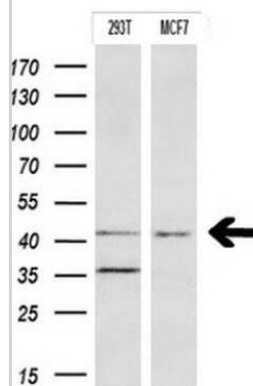
Immunocytochemistry/Immunofluorescence: Indoleamine 2,3-dioxygenase/IDO Antibody (2B5) [NBP2-46020] - Analysis of COS7 cells transiently transfected by pCMV6-ENTRY IDO1.



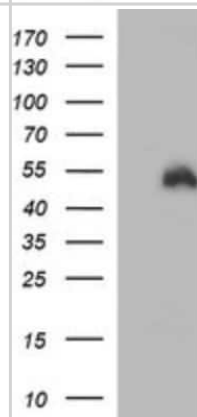
Immunohistochemistry-Paraffin: Indoleamine 2,3-dioxygenase/IDO Antibody (2B5) [NBP2-46020] - Staining of paraffin-embedded Human lymphoma tissue using anti-IDO1 mouse monoclonal antibody. (Heat-induced epitope retrieval by 10mM citric buffer, pH6.0, 120C for 3min.



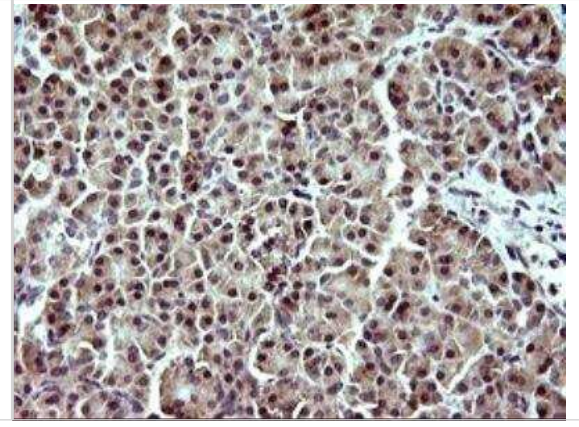
Western Blot: Indoleamine 2,3-dioxygenase/IDO Antibody (2B5) [NBP2-46020] - Analysis of extracts (10ug) from 2 different cell lines.



Western Blot: Indoleamine 2,3-dioxygenase/IDO Antibody (2B5) [NBP2-46020] - Analysis of HEK293T cells were transfected with the pCMV6-ENTRY control (Left lane) or pCMV6-ENTRY IDO.



Immunohistochemistry-Paraffin: Indoleamine 2,3-dioxygenase/IDO Antibody (2B5) [NBP2-46020] - Staining of paraffin-embedded Human pancreas tissue within the normal limits using anti-IDO1 mouse monoclonal antibody. (Heat-induced epitope retrieval by 10mM citric buffer, pH6.0, 120C for 3min.





Novus Biologicals USA

10730 E. Briarwood Avenue
Centennial, CO 80112
USA
Phone: 303.730.1950
Toll Free: 1.888.506.6887
Fax: 303.730.1966
nb-customerservice@bio-techne.com

Bio-Techne Canada

21 Canmotor Ave
Toronto, ON M8Z 4E6
Canada
Phone: 905.827.6400
Toll Free: 855.668.8722
Fax: 905.827.6402
canada.inquires@bio-techne.com

Bio-Techne Ltd

19 Barton Lane
Abingdon Science Park
Abingdon, OX14 3NB, United Kingdom
Phone: (44) (0) 1235 529449
Free Phone: 0800 37 34 15
Fax: (44) (0) 1235 533420
info.EMEA@bio-techne.com

General Contact Information

www.novusbio.com
Technical Support: nb-technical@bio-techne.com
Orders: nb-customerservice@bio-techne.com
General: novus@novusbio.com

Products Related to NBP2-46020

NBP2-33376H	Blue Marker Antibody (6F4-F6) [HRP]
HAF007	Goat anti-Mouse IgG Secondary Antibody [HRP]
NB7539	Goat anti-Mouse IgG (H+L) Secondary Antibody [HRP]
NBP1-97005-0.5mg	Mouse IgG1 Isotype Control (MG1)

Limitations

This product is for research use only and is not approved for use in humans or in clinical diagnosis. Primary Antibodies are guaranteed for 1 year from date of receipt.

For more information on our 100% guarantee, please visit www.novusbio.com/guarantee

Earn gift cards/discounts by submitting a review: www.novusbio.com/reviews/submit/NBP2-46020

Earn gift cards/discounts by submitting a publication using this product:
www.novusbio.com/publications

