

# Product Datasheet

## beta-Galactosidase-1/GLB1 Antibody (OTI1C9) NBP2-45731

Unit Size: 0.1 ml

Store at -20C. Avoid freeze-thaw cycles.

[www.novusbio.com](http://www.novusbio.com)



[technical@novusbio.com](mailto:technical@novusbio.com)

### Publications: 6

Protocols, Publications, Related Products, Reviews, Research Tools and Images at:  
[www.novusbio.com/NBP2-45731](http://www.novusbio.com/NBP2-45731)

Updated 9/9/2025 v.20.1

Earn rewards for product  
reviews and publications.

Submit a publication at [www.novusbio.com/publications](http://www.novusbio.com/publications)

Submit a review at [www.novusbio.com/reviews/destination/NBP2-45731](http://www.novusbio.com/reviews/destination/NBP2-45731)



**NBP2-45731**

beta-Galactosidase-1/GLB1 Antibody (OT11C9)

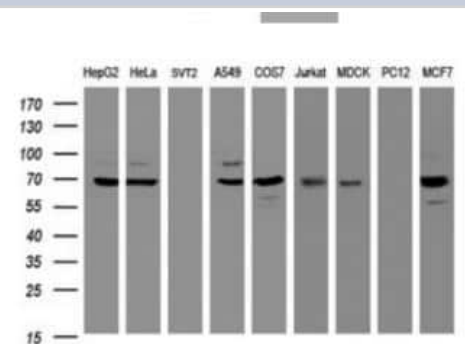
Product Information	
Unit Size	0.1 ml
Concentration	1 mg/ml
Storage	Store at -20C. Avoid freeze-thaw cycles.
Clonality	Monoclonal
Clone	OT11C9
Preservative	0.02% Sodium Azide
Isotype	IgG2a
Purity	Immunogen affinity purified
Buffer	PBS (pH 7.3), 1% BSA, 50% Glycerol
Target Molecular Weight	72.6 kDa

Product Description	
Description	Novus Biologicals Mouse beta-Galactosidase-1/GLB1 Antibody (OT11C9) (NBP2-45731) is a monoclonal antibody validated for use in IHC, WB and ICC/IF. Anti-beta-Galactosidase-1/GLB1 Antibody: Cited in 6 publications. All Novus Biologicals antibodies are covered by our 100% guarantee.
Host	Mouse
Gene ID	2720
Gene Symbol	GLB1
Species	Human, Canine, Monkey
Immunogen	Full length human recombinant protein of human GLB1(NP_001073279) produced in HEK293T cell.

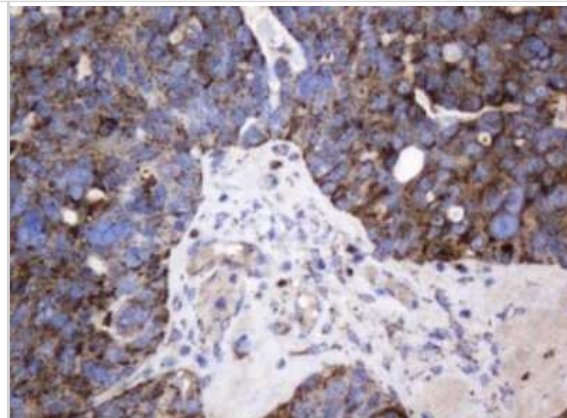
Product Application Details	
Applications	Western Blot, Immunohistochemistry-Paraffin, Immunohistochemistry
Recommended Dilutions	Western Blot 1:500, Immunohistochemistry 1:150, Immunohistochemistry-Paraffin 1:150

**Images**

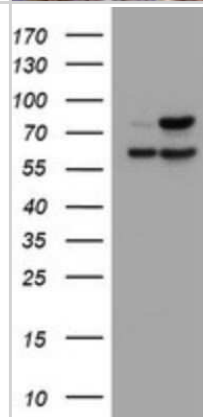
Western Blot: beta-Galactosidase-1/GLB1 Antibody (OT11C9) [NBP2-45731] - Analysis of extracts (35ug) from 9 different cell lines by using anti-GLB1 monoclonal antibody (HepG2: human; HeLa: human; SVT2: mouse; A549: human; COS7: monkey; Jurkat: human; MDCK: canine; PC12: rat; MCF7: human).



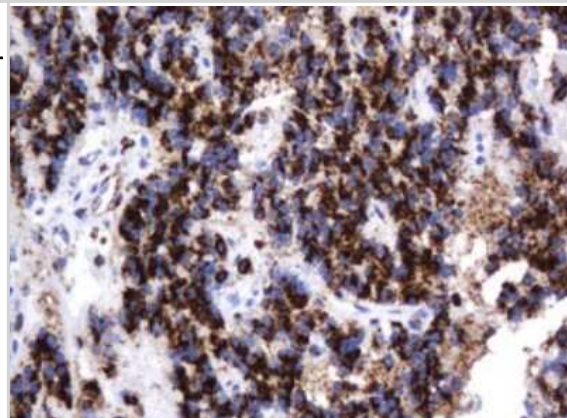
Immunohistochemistry: beta-Galactosidase-1/GLB1 Antibody (1C9) [NBP2-45731] - Analysis of Adenocarcinoma of Human ovary tissue. (Heat-induced epitope retrieval by 10mM citric buffer, pH6.0, 120C for 3min)



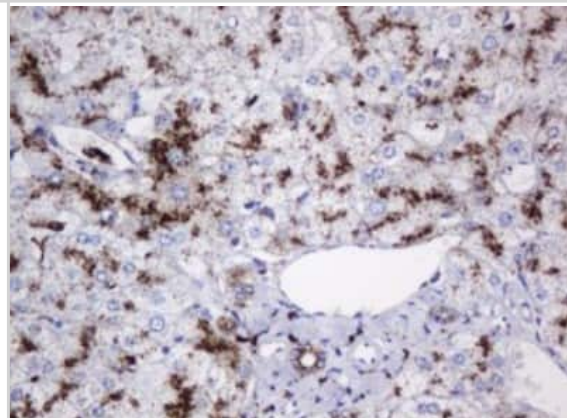
Western Blot: beta-Galactosidase-1/GLB1 Antibody (OT11C9) [NBP2-45731] - Analysis of HEK293T cells were transfected with the pCMV6-ENTRY control (Left lane) or pCMV6-ENTRY GLB1 .



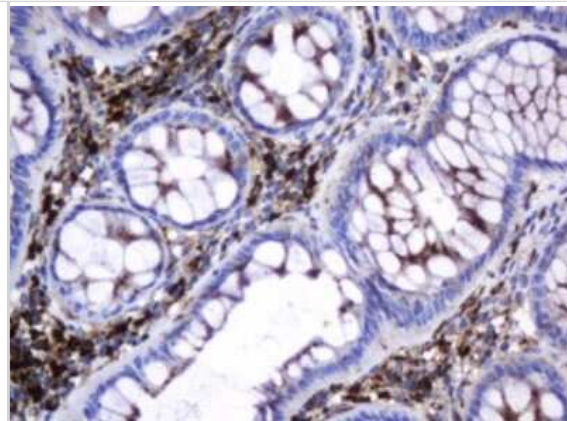
Immunohistochemistry: beta-Galactosidase-1/GLB1 Antibody (OT11C9) [NBP2-45731] - Analysis of Carcinoma of Human pancreas tissue. (Heat-induced epitope retrieval by 10mM citric buffer, pH6.0, 120C for 3min)



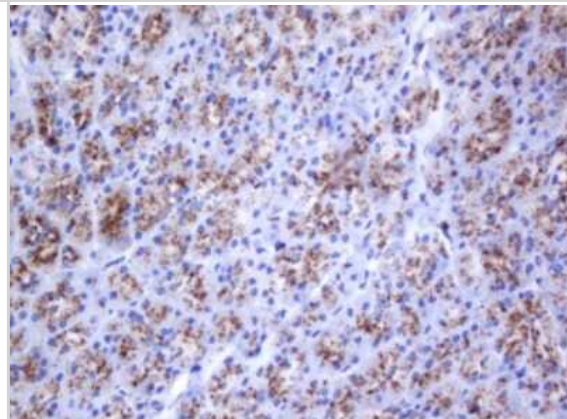
Immunohistochemistry: beta-Galactosidase-1/GLB1 Antibody (OT11C9) [NBP2-45731] - Analysis of Human liver tissue. (Heat-induced epitope retrieval by 10mM citric buffer, pH6.0, 120C for 3min)



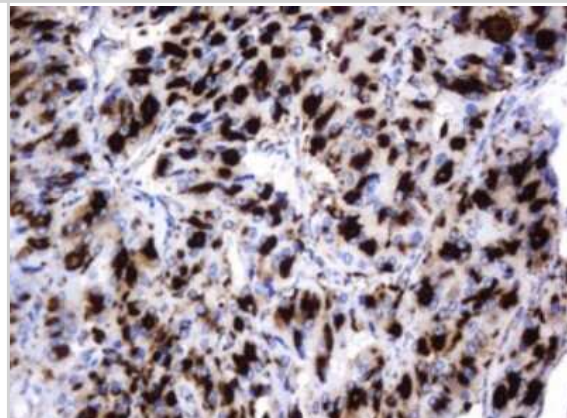
Immunohistochemistry: beta-Galactosidase-1/GLB1 Antibody (OT11C9) [NBP2-45731] - Analysis of Human colon tissue. (Heat-induced epitope retrieval by 10mM citric buffer, pH6.0, 120C for 3min)



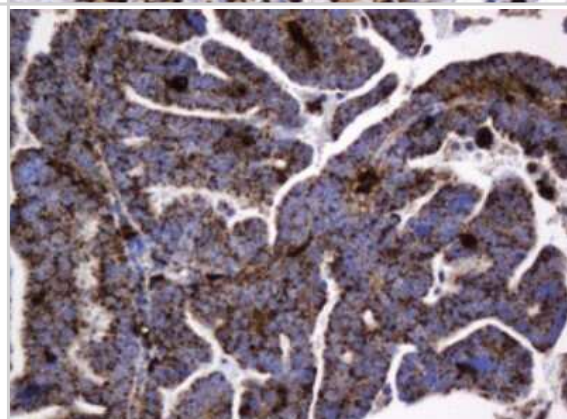
Immunohistochemistry: beta-Galactosidase-1/GLB1 Antibody (OT11C9) [NBP2-45731] - Analysis of Human pancreas tissue. (Heat-induced epitope retrieval by 10mM citric buffer, pH6.0, 120C for 3min)



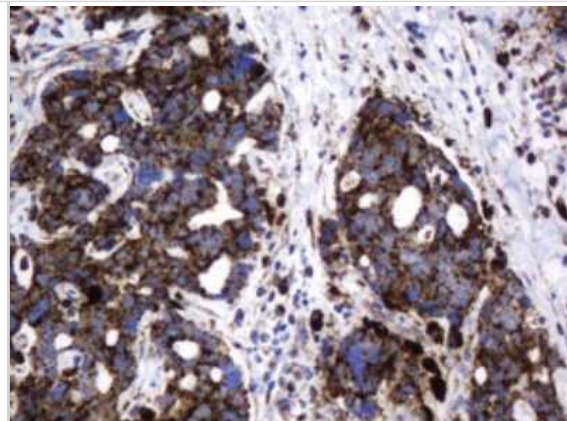
Immunohistochemistry: beta-Galactosidase-1/GLB1 Antibody (OT11C9) [NBP2-45731] - Analysis of Carcinoma of Human thyroid tissue. (Heat-induced epitope retrieval by 10mM citric buffer, pH6.0, 120C for 3min)



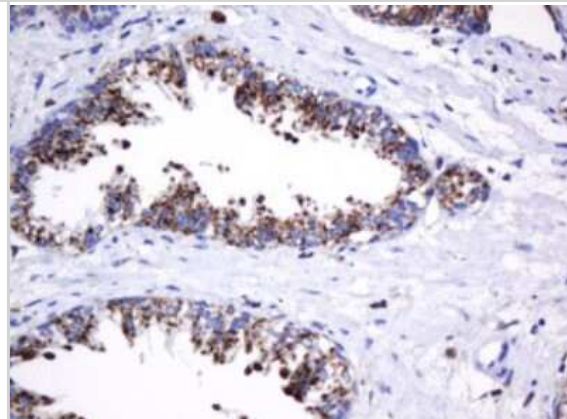
Immunohistochemistry: beta-Galactosidase-1/GLB1 Antibody (OT11C9) [NBP2-45731] - Analysis of Adenocarcinoma of Human endometrium tissue. (Heat-induced epitope retrieval by 10mM citric buffer, pH6.0, 120C for 3min)



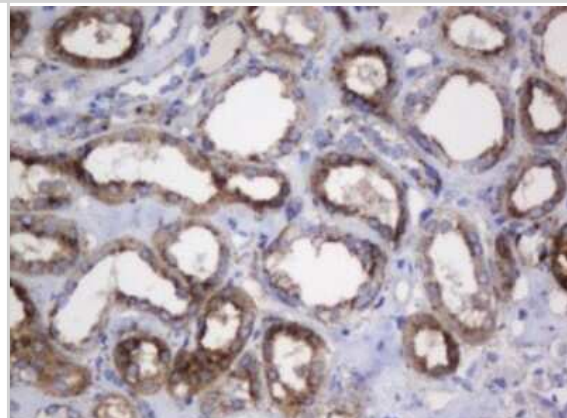
Immunohistochemistry: beta-Galactosidase-1/GLB1 Antibody (OT11C9) [NBP2-45731] - Analysis of Adenocarcinoma of Human breast tissue. (Heat-induced epitope retrieval by 10mM citric buffer, pH6.0, 120C for 3min)



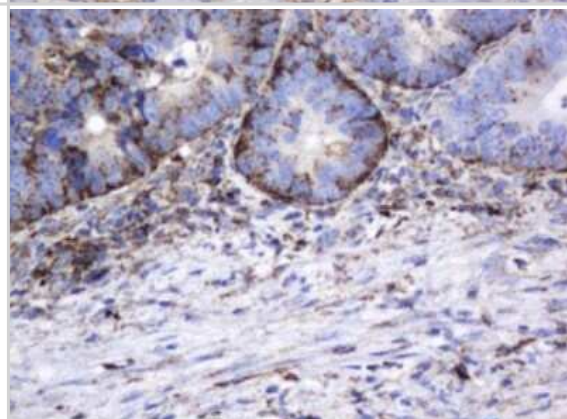
Immunohistochemistry: beta-Galactosidase-1/GLB1 Antibody (OT11C9) [NBP2-45731] - Analysis of Human prostate tissue. (Heat-induced epitope retrieval by 10mM citric buffer, pH6.0, 120C for 3min)



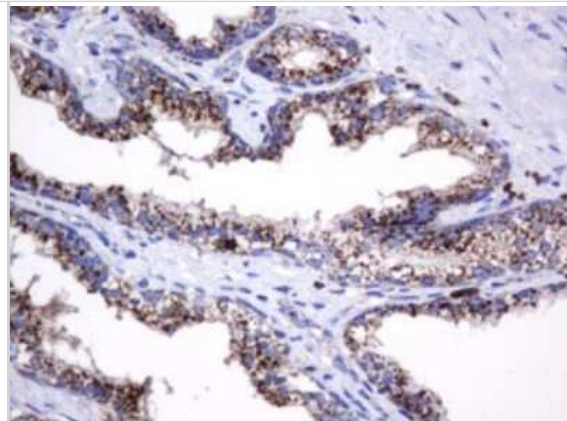
Immunohistochemistry: beta-Galactosidase-1/GLB1 Antibody (OT11C9) [NBP2-45731] - Analysis of Human Kidney tissue. (Heat-induced epitope retrieval by 10mM citric buffer, pH6.0, 120C for 3min)



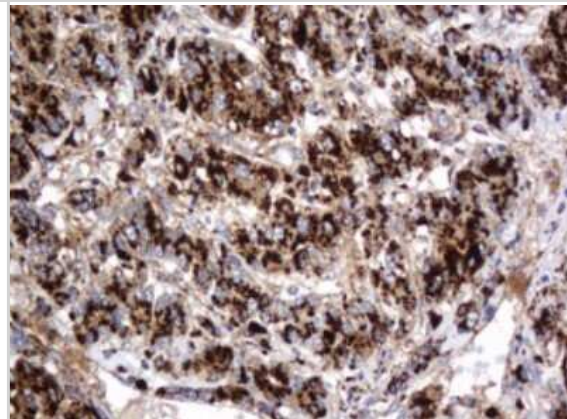
Immunohistochemistry: beta-Galactosidase-1/GLB1 Antibody (OT11C9) [NBP2-45731] - Analysis of Adenocarcinoma of Human colon tissue. (Heat-induced epitope retrieval by 10mM citric buffer, pH6.0, 120C for 3min)



Immunohistochemistry: beta-Galactosidase-1/GLB1 Antibody (OT11C9) [NBP2-45731] - Analysis of Carcinoma of Human prostate tissue. (Heat-induced epitope retrieval by 10mM citric buffer, pH6.0, 120C for 3min)



Immunohistochemistry: beta-Galactosidase-1/GLB1 Antibody (OT11C9) [NBP2-45731] - Analysis of Carcinoma of Human liver tissue. (Heat-induced epitope retrieval by 10mM citric buffer, pH6.0, 120C for 3min)



beta-Galactosidase-1/GLB1 Antibody (OT11C9)[NBP2-45731]Simple Western analysis of endogenous protein p21 Ras (HRAS) from HELA lysates (0.1 mg/mL) using HRAS Mouse Monoclonal Antibody . The virtual lane view (left) shows the target (as indicated) at a 1:50 dilution of primary antibody. The corresponding electropherogram view (right) plots chemiluminescence by molecular weight along the capillary at a 1:50 dilution of primary antibody. This experiment was performed under reducing conditions on the Jess Simple Western instrument from ProteinSimple, a Bio-Techne brand, using the 12x230 kDa Separation Module.



## Publications

Limberger T, Schleder M, Trachtov A K et al. KMT2C methyltransferase domain regulated INK4A expression suppresses prostate cancer metastasis *Molecular Cancer* 2022-12-01 [PMID: 35354467] (IHC-P, Mouse)

Lee TXY, Wu J, Jean WH et al. Reduced stem cell aging in exercised human skeletal muscle is enhanced by ginsenoside Rg1 *Aging* 2021-06-28 [PMID: 34181580] (IHC-P)

Wu J, Saovieng S et al. Ginsenoside Rg1 supplementation clears senescence-associated beta-galactosidase in exercising human skeletal muscle. *J Ginseng Res* 2019-01-10 [PMID: 31695564] (ICC/IF, Human)

Wu J, Cheng IS, Saovieng S et al. Aerobic exercise induces tumor suppressor p16INK4a expression of endothelial progenitor cells in human skeletal muscle *Aging (Albany NY)* 2020-10-26 [PMID: 33104519] (IF/IHC, Human)

Luu AR, Wong H, Agrawal V et al. Lysosome-targeted beta-galactosidase negatively regulates neuraminidase 1 (NEU1) and promotes NEU1 deficiency in GM1 gangliosidosis *J. Biol. Chem.* 2020-07-28 [PMID: 32727849] (WB, Non-species specific)

Chen JC, Luu AR, Wise N et al. Intracerebroventricular enzyme replacement therapy with Beta-Galactosidase reverses brain pathologies due to GM1 gangliosidosis in mice *J. Biol. Chem.* 2019-09-03 [PMID: 31481471] (WB)



### **Novus Biologicals USA**

10730 E. Briarwood Avenue  
Centennial, CO 80112  
USA  
Phone: 303.730.1950  
Toll Free: 1.888.506.6887  
Fax: 303.730.1966  
nb-customerservice@bio-techne.com

### **Bio-Techne Canada**

21 Canmotor Ave  
Toronto, ON M8Z 4E6  
Canada  
Phone: 905.827.6400  
Toll Free: 855.668.8722  
Fax: 905.827.6402  
canada.inquires@bio-techne.com

### **Bio-Techne Ltd**

19 Barton Lane  
Abingdon Science Park  
Abingdon, OX14 3NB, United Kingdom  
Phone: (44) (0) 1235 529449  
Free Phone: 0800 37 34 15  
Fax: (44) (0) 1235 533420  
info.EMEA@bio-techne.com

### **General Contact Information**

www.novusbio.com  
Technical Support: nb-technical@bio-techne.com  
Orders: nb-customerservice@bio-techne.com  
General: novus@novusbio.com

### **Products Related to NBP2-45731**

---

NBP2-33376H	Blue Marker Antibody (6F4-F6) [HRP]
HAF007	Goat anti-Mouse IgG Secondary Antibody [HRP]
NB7539	Goat anti-Mouse IgG (H+L) Secondary Antibody [HRP]
NBP1-96778	Mouse IgG2a Isotype Control (M2A)

---

### **Limitations**

This product is for research use only and is not approved for use in humans or in clinical diagnosis. Primary Antibodies are guaranteed for 1 year from date of receipt.

For more information on our 100% guarantee, please visit [www.novusbio.com/guarantee](http://www.novusbio.com/guarantee)

Earn gift cards/discounts by submitting a review: [www.novusbio.com/reviews/submit/NBP2-45731](http://www.novusbio.com/reviews/submit/NBP2-45731)

Earn gift cards/discounts by submitting a publication using this product:  
[www.novusbio.com/publications](http://www.novusbio.com/publications)

