

Product Datasheet

MafB Antibody (OTI1E9) NBP2-45718

Unit Size: 0.1 ml

Store at -20C. Avoid freeze-thaw cycles.

www.novusbio.com



technical@novusbio.com

Publications: 1

Protocols, Publications, Related Products, Reviews, Research Tools and Images at:
www.novusbio.com/NBP2-45718

Updated 9/9/2025 v.20.1

Earn rewards for product
reviews and publications.

Submit a publication at www.novusbio.com/publications

Submit a review at www.novusbio.com/reviews/destination/NBP2-45718



NBP2-45718

MafB Antibody (OTI1E9)

Product Information	
Unit Size	0.1 ml
Concentration	1 mg/ml
Storage	Store at -20C. Avoid freeze-thaw cycles.
Clonality	Monoclonal
Clone	OTI1E9
Preservative	0.02% Sodium Azide
Isotype	IgG2b
Purity	Immunogen affinity purified
Buffer	PBS (pH 7.3), 1.0% BSA and 50% Glycerol
Target Molecular Weight	35.6 kDa

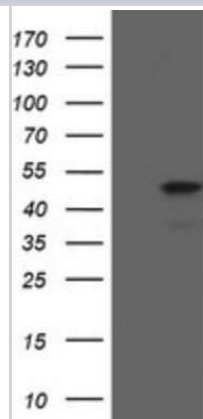
Product Description	
Description	Novus Biologicals Mouse MafB Antibody (OTI1E9) (NBP2-45718) is a monoclonal antibody validated for use in IHC, WB and Flow. Anti-MafB Antibody: Cited in 1 publication. All Novus Biologicals antibodies are covered by our 100% guarantee.
Host	Mouse
Gene ID	9935
Gene Symbol	MAFB
Species	Human, Mouse, Rat
Reactivity Notes	Please note that this antibody is reactive to Mouse and derived from the same host, Mouse. Mouse-On-Mouse blocking reagent may be needed for IHC and ICC experiments to reduce high background signal. You can find these reagents under catalog numbers PK-2200-NB and MP-2400-NB. Please contact Technical Support if you have any questions.
Immunogen	Human recombinant protein fragment corresponding to amino acids 32-320 of human MAFB (NP_005452) produced in E.coli.

Product Application Details	
Applications	Western Blot, Immunohistochemistry-Paraffin, Flow Cytometry, Immunohistochemistry
Recommended Dilutions	Western Blot 1:2000, Flow Cytometry 1:100, Immunohistochemistry 1:150, Immunohistochemistry-Paraffin
Application Notes	Heat-induced epitope retrieval by 10mM citric buffer, pH 6.0, 100C for 10 min is recommended

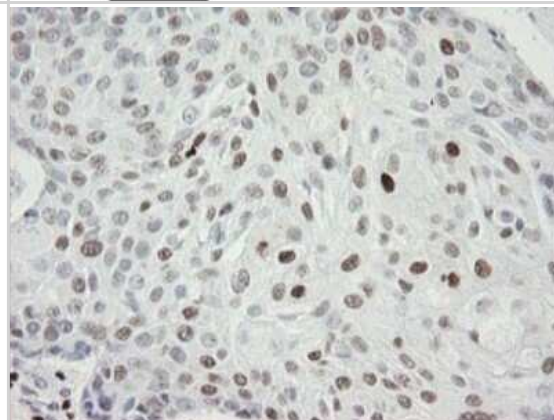


Images

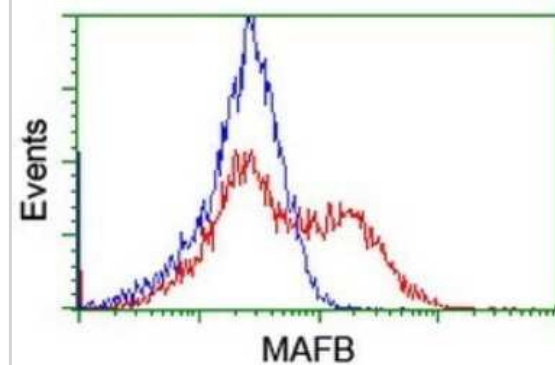
Western Blot: MafB Antibody (OT11E9) [NBP2-45718] - Analysis of HEK293T cells were transfected with the pCMV6-ENTRY control (Left lane) or pCMV6-ENTRY MAFB.



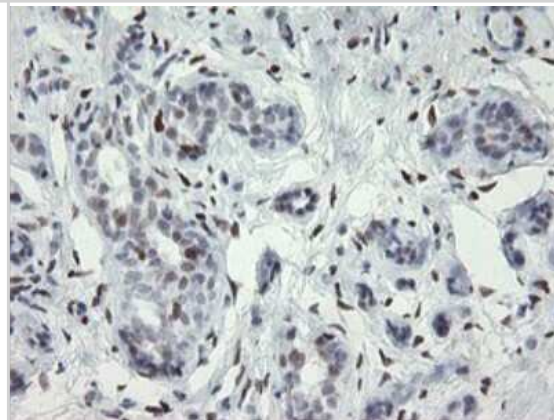
Immunohistochemistry: MafB Antibody (OT11E9) [NBP2-45718] - Analysis of Carcinoma of Human lung tissue.



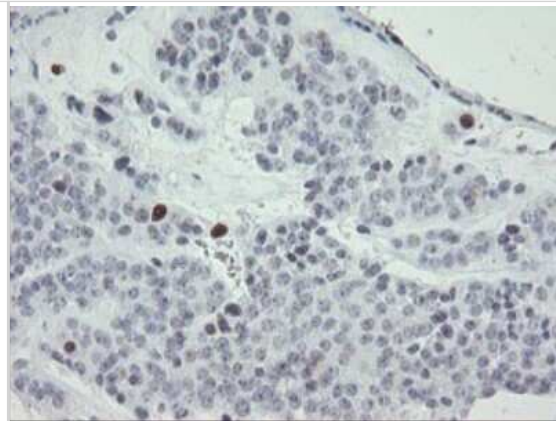
Flow Cytometry: MafB Antibody (OT11E9) [NBP2-45718] - Analysis of HEK293T cells transfected with either overexpress plasmid (Red) or empty vector control plasmid (Blue) were immunostained by MAFB antibody.



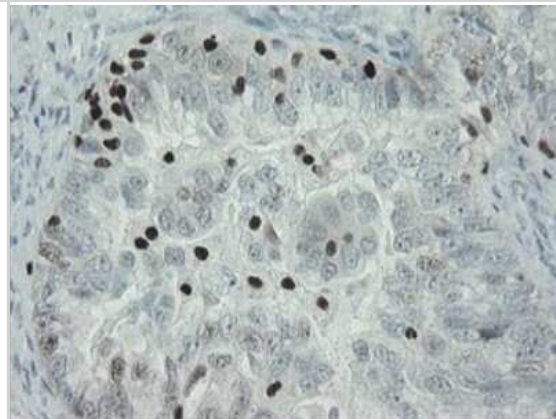
Immunohistochemistry: MafB Antibody (OT11E9) [NBP2-45718] - Analysis of Human breast tissue.



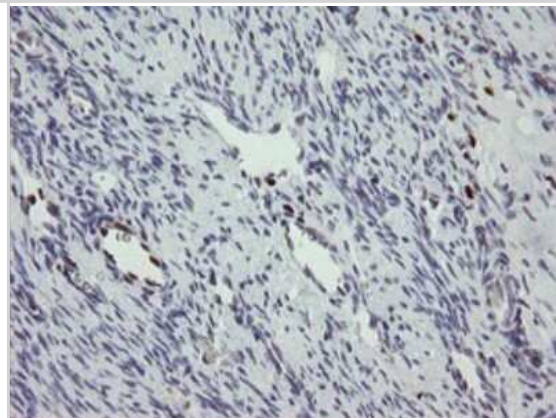
Immunohistochemistry: MafB Antibody (OT11E9) [NBP2-45718] -
Analysis of Carcinoma of Human pancreas tissue.



Immunohistochemistry: MafB Antibody (OT11E9) [NBP2-45718] -
Analysis of Adenocarcinoma of Human ovary tissue.



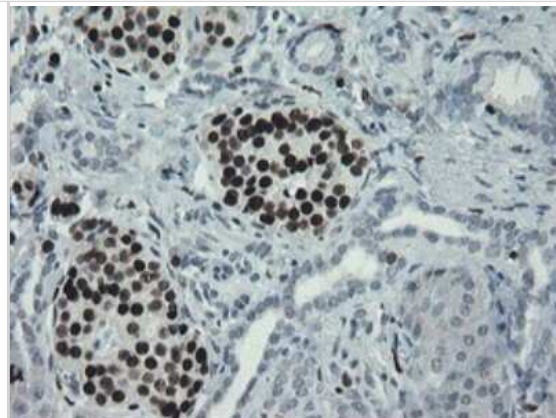
Immunohistochemistry: MafB Antibody (OT11E9) [NBP2-45718] -
Analysis of Human Ovary tissue.



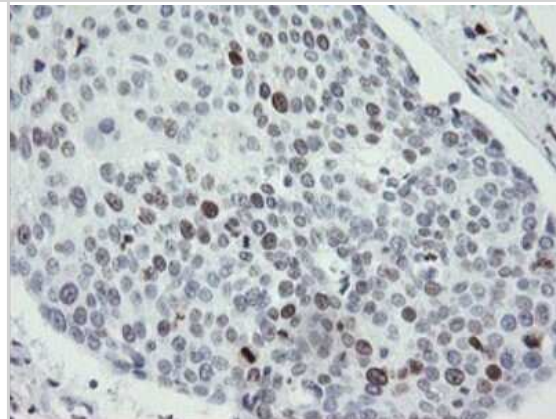
Immunohistochemistry: MafB Antibody (OT11E9) [NBP2-45718] -
Analysis of Adenocarcinoma of Human endometrium tissue.



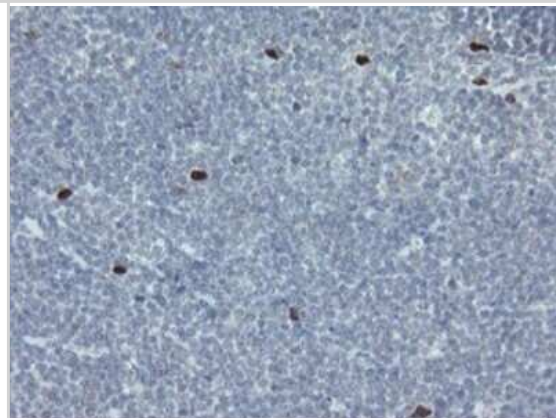
Immunohistochemistry: MafB Antibody (OT11E9) [NBP2-45718] -
Analysis of Human pancreas tissue.



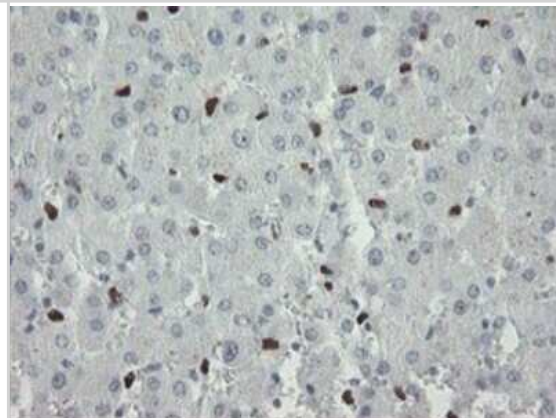
Immunohistochemistry: MafB Antibody (OT11E9) [NBP2-45718] -
Analysis of Carcinoma of Human bladder tissue.



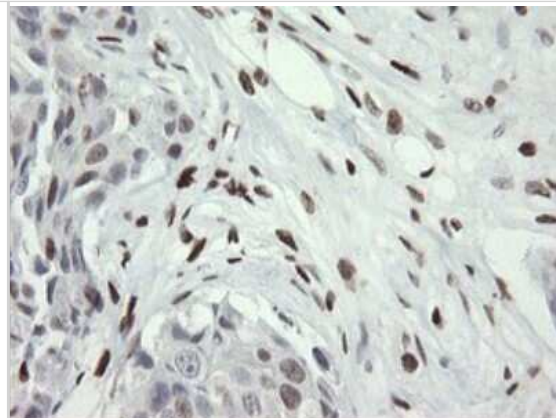
Immunohistochemistry: MafB Antibody (OT11E9) [NBP2-45718] -
Analysis of Human lymphoma tissue.



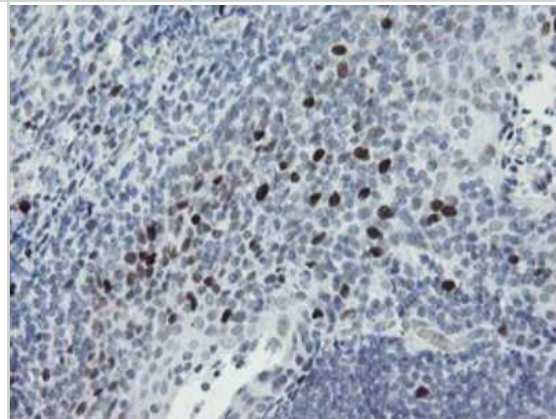
Immunohistochemistry: MafB Antibody (OT11E9) [NBP2-45718] -
Analysis of Human liver tissue.



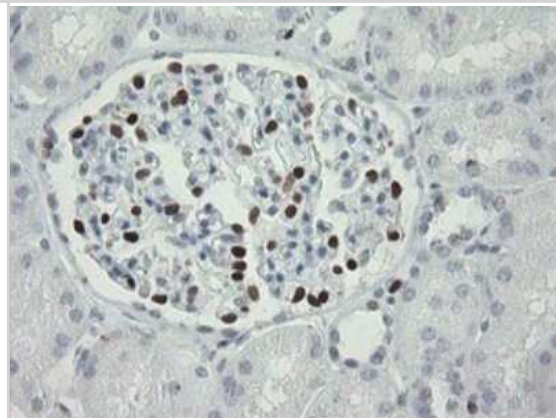
Immunohistochemistry: MafB Antibody (OT11E9) [NBP2-45718] -
Analysis of Adenocarcinoma of Human breast tissue.



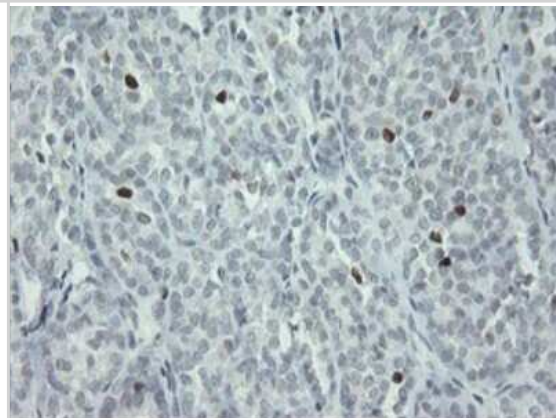
Immunohistochemistry: MafB Antibody (OT11E9) [NBP2-45718] -
Analysis of Human tonsil tissue.



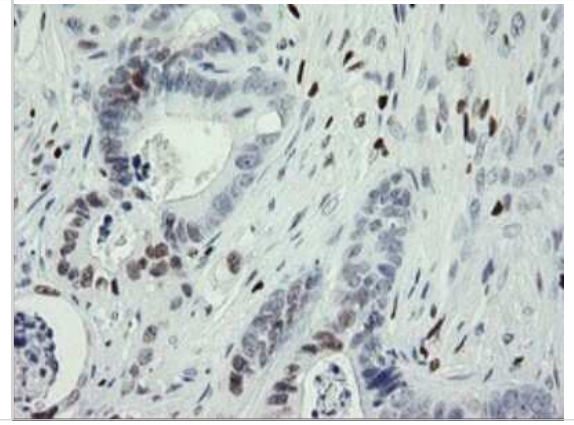
Immunohistochemistry: MafB Antibody (OT11E9) [NBP2-45718] -
Analysis of Human Kidney tissue.



Immunohistochemistry: MafB Antibody (OT11E9) [NBP2-45718] -
Analysis of Carcinoma of Human thyroid tissue.



Immunohistochemistry: MafB Antibody (OT11E9) [NBP2-45718] -
Analysis of Adenocarcinoma of Human colon tissue.



Publications

Hoenow S, Yan K, Noll J Et al. The Properties of Proinflammatory Ly6C(hi) Monocytes Are Differentially Shaped by Parasitic and Bacterial Liver Infections Cells 2022-08-26 [PMID: 36010615] (FLOW, Mouse)

Details:

Citation using the PerCP version of this antibody.



Novus Biologicals USA

10730 E. Briarwood Avenue
Centennial, CO 80112
USA
Phone: 303.730.1950
Toll Free: 1.888.506.6887
Fax: 303.730.1966
nb-customerservice@bio-techne.com

Bio-Techne Canada

21 Canmotor Ave
Toronto, ON M8Z 4E6
Canada
Phone: 905.827.6400
Toll Free: 855.668.8722
Fax: 905.827.6402
canada.inquires@bio-techne.com

Bio-Techne Ltd

19 Barton Lane
Abingdon Science Park
Abingdon, OX14 3NB, United Kingdom
Phone: (44) (0) 1235 529449
Free Phone: 0800 37 34 15
Fax: (44) (0) 1235 533420
info.EMEA@bio-techne.com

General Contact Information

www.novusbio.com
Technical Support: nb-technical@bio-techne.com
Orders: nb-customerservice@bio-techne.com
General: novus@novusbio.com

Products Related to NBP2-45718

NBP2-33376H	Blue Marker Antibody (6F4-F6) [HRP]
HAF007	Goat anti-Mouse IgG Secondary Antibody [HRP]
NB7539	Goat anti-Mouse IgG (H+L) Secondary Antibody [HRP]
NBP2-27231	Mouse IgG2b Isotype Control (MPC-11)

Limitations

This product is for research use only and is not approved for use in humans or in clinical diagnosis. Primary Antibodies are guaranteed for 1 year from date of receipt.

For more information on our 100% guarantee, please visit www.novusbio.com/guarantee

Earn gift cards/discounts by submitting a review: www.novusbio.com/reviews/submit/NBP2-45718

Earn gift cards/discounts by submitting a publication using this product:
www.novusbio.com/publications

