

Product Datasheet

PEX5 Antibody NBP2-44324

Unit Size: 0.1 mg

Store at -20C. Avoid freeze-thaw cycles.

www.novusbio.com



technical@novusbio.com

Publications: 1

Protocols, Publications, Related Products, Reviews, Research Tools and Images at:
www.novusbio.com/NBP2-44324

Updated 9/9/2025 v.20.1

Earn rewards for product
reviews and publications.

Submit a publication at www.novusbio.com/publications

Submit a review at www.novusbio.com/reviews/destination/NBP2-44324



NBP2-44324

PEX5 Antibody

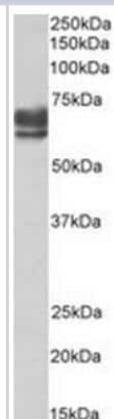
Product Information	
Unit Size	0.1 mg
Concentration	0.5 mg/ml
Storage	Store at -20C. Avoid freeze-thaw cycles.
Clonality	Polyclonal
Preservative	0.02% Sodium Azide
Isotype	IgG
Purity	Immunogen affinity purified
Buffer	Tris saline (20 mM Tris pH 7.3, 150 mM NaCl), 0.5% BSA

Product Description	
Description	Novus Biologicals Goat PEX5 Antibody (NBP2-44324) is a polyclonal antibody validated for use in WB and ELISA. Anti-PEX5 Antibody: Cited in 1 publication. All Novus Biologicals antibodies are covered by our 100% guarantee.
Host	Goat
Gene ID	5830
Gene Symbol	PEX5
Species	Human
Specificity/Sensitivity	This antibody is expected to recognize all reported isoforms (NP_001124495.1; NP_000310.2; NP_001124496.1; NP_001124497.1). Reported variants represent identical protein: NP_001124498.1, NP_001124497.1
Immunogen	Peptide with sequence C-QHTASDFVAKVDDPK, from the internal region of the protein sequence according to NP_001124495.1; NP_000310.2; NP_001124496.1; NP_001124497.1.

Product Application Details	
Applications	Western Blot, Peptide ELISA
Recommended Dilutions	Western Blot 0.1 - 0.3 ug/ml, Peptide ELISA Detection limit 1:128000
Application Notes	Western blot: Approx 70+65kDa bands observed in Human Kidney lysates (calculated MW of 72.3kDa according to NP_001124495.1 and 66.8kDa according to NP_001124496.1). Recommended concentration: 0.1-0.3ug/ml.

Images

Western Blot: PEX5 Antibody [NBP2-44324] - Analysis of Human Kidney lysate (35ug protein in RIPA buffer).



Publications

Alencastre IS, Rodrigues TA, Grou CP et al. Mapping the cargo protein membrane translocation step into the PEX5 cycling pathway. J Biol Chem 2009-10-02 [PMID: 19632994]





Novus Biologicals USA

10730 E. Briarwood Avenue
Centennial, CO 80112
USA
Phone: 303.730.1950
Toll Free: 1.888.506.6887
Fax: 303.730.1966
nb-customerservice@bio-techne.com

Bio-Techne Canada

21 Canmotor Ave
Toronto, ON M8Z 4E6
Canada
Phone: 905.827.6400
Toll Free: 855.668.8722
Fax: 905.827.6402
canada.inquires@bio-techne.com

Bio-Techne Ltd

19 Barton Lane
Abingdon Science Park
Abingdon, OX14 3NB, United Kingdom
Phone: (44) (0) 1235 529449
Free Phone: 0800 37 34 15
Fax: (44) (0) 1235 533420
info.EMEA@bio-techne.com

General Contact Information

www.novusbio.com
Technical Support: nb-technical@bio-techne.com
Orders: nb-customerservice@bio-techne.com
General: novus@novusbio.com

Products Related to NBP2-44324

NBP2-33376H	Blue Marker Antibody (6F4-F6) [HRP]
HAF017	Rabbit anti-Goat IgG Secondary Antibody [HRP (Horseradish Peroxidase)]
HAF109	Donkey anti-Goat IgG Secondary Antibody [HRP (Horseradish Peroxidase)]
NB410-28088-1mg	Goat IgG Isotype Control

Limitations

This product is for research use only and is not approved for use in humans or in clinical diagnosis. Primary Antibodies are guaranteed for 1 year from date of receipt.

For more information on our 100% guarantee, please visit www.novusbio.com/guarantee

Earn gift cards/discounts by submitting a review: www.novusbio.com/reviews/submit/NBP2-44324

Earn gift cards/discounts by submitting a publication using this product:
www.novusbio.com/publications



