

# Product Datasheet

## Coatomer Subunit Delta Antibody (189) - Azide and BSA Free NBP2-43773

Unit Size: 0.1 ml

Aliquot and store at -20C or -80C. Avoid freeze-thaw cycles.

[www.novusbio.com](http://www.novusbio.com)



[technical@novusbio.com](mailto:technical@novusbio.com)

Protocols, Publications, Related Products, Reviews, Research Tools and Images at:  
[www.novusbio.com/NBP2-43773](http://www.novusbio.com/NBP2-43773)

Updated 9/9/2025 v.20.1

Earn rewards for product  
reviews and publications.

Submit a publication at [www.novusbio.com/publications](http://www.novusbio.com/publications)

Submit a review at [www.novusbio.com/reviews/destination/NBP2-43773](http://www.novusbio.com/reviews/destination/NBP2-43773)



**NBP2-43773**

Coatomer Subunit Delta Antibody (189) - Azide and BSA Free

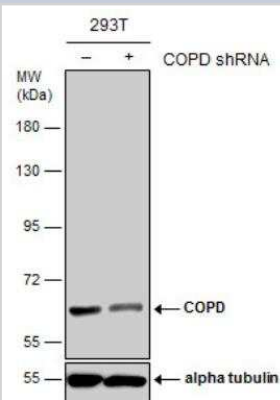
Product Information	
<b>Unit Size</b>	0.1 ml
<b>Concentration</b>	Concentrations vary lot to lot. See vial label for concentration. If unlisted please contact technical services.
<b>Storage</b>	Aliquot and store at -20C or -80C. Avoid freeze-thaw cycles.
<b>Clonality</b>	Monoclonal
<b>Clone</b>	189
<b>Preservative</b>	No Preservative
<b>Isotype</b>	IgG2b
<b>Purity</b>	Protein G purified
<b>Buffer</b>	PBS

Product Description	
<b>Description</b>	Novus Biologicals Mouse Coatomer Subunit Delta Antibody (189) - Azide and BSA Free (NBP2-43773) is a monoclonal antibody validated for use in IHC and WB. All Novus Biologicals antibodies are covered by our 100% guarantee.
<b>Host</b>	Mouse
<b>Gene ID</b>	372
<b>Gene Symbol</b>	ARCN1
<b>Species</b>	Human, Mouse, Rat
<b>Immunogen</b>	Recombinant protein encompassing a sequence within the center region of human Coatomer Subunit Delta. The exact sequence is proprietary.

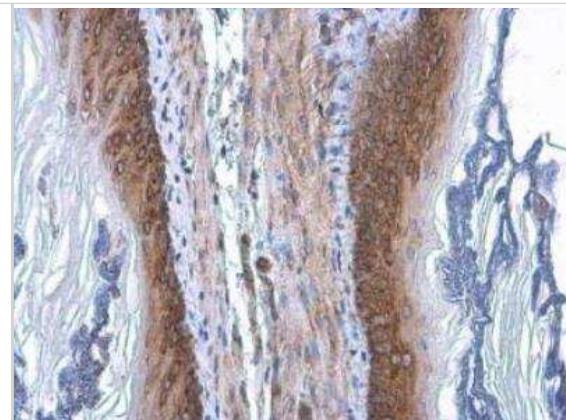
Product Application Details	
<b>Applications</b>	Western Blot, Immunohistochemistry-Paraffin, Immunohistochemistry-Frozen
<b>Recommended Dilutions</b>	Western Blot 1:1000-1:20000, Immunohistochemistry-Paraffin 1:100-1:1000, Immunohistochemistry-Frozen 1:100-1:1000

**Images**

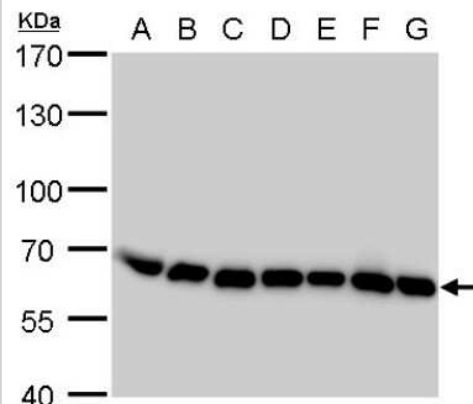
Western Blot: Coatomer Subunit Delta Antibody (189) [NBP2-43773] - Non-transfected (-) and transfected (+) 293T whole cell extracts (30 ug) were separated by 7.5% SDS-PAGE, and the membrane was blotted with COPD antibody [189].



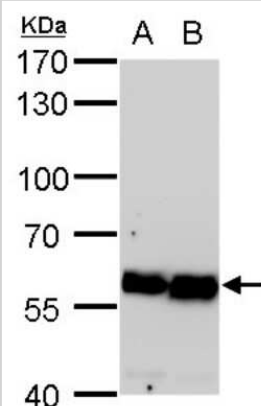
Immunohistochemistry-Paraffin: Coatomer Subunit Delta Antibody (189) [NBP2-43773] - Coatomer Subunit Delta Antibody (189) detects Coatomer Subunit Delta protein at cytoplasm by immunohistochemical analysis. Sample: Paraffin-embedded mouse esophagus. Coatomer Subunit Delta stained by Coatomer Subunit Delta Antibody (189) diluted at 1:200. Antigen Retrieval: Citrate buffer, pH 6.0, 15 min.



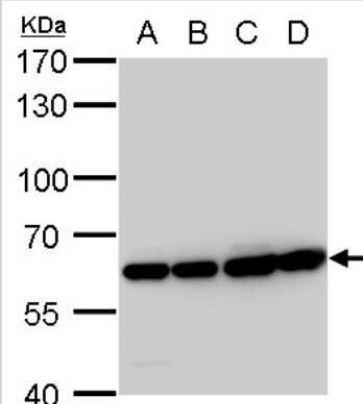
Western Blot: Coatomer Subunit Delta Antibody (189) [NBP2-43773] - Analysis of A. 30 ug Neuro2A whole cell lysate/extract B. 30 ug GL261 whole cell lysate/extract C. 30 ug C8D30 whole cell lysate/extract D. 30 ug NIH-3T3 whole cell lysate/extract E. 30 ug BCL-1 whole cell lysate/extract F. 30 ug Raw 264.7 whole cell lysate/extract G. 30 ug C2Cl2 whole cell lysate/extract 7.5 % SDS-PAGE COPD antibody [189] dilution: 1:5000



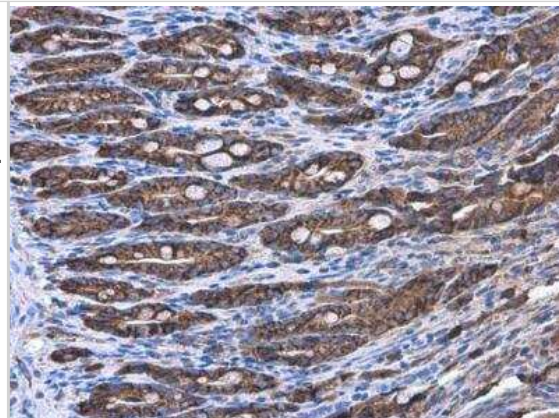
Western Blot: Coatomer Subunit Delta Antibody (189) [NBP2-43773] - Analysis of A. 30 ug PC-12 whole cell lysate/extract B. 30 ug Rat2 whole cell lysate/extract 7.5 % SDS-PAGE COPD antibody [189] dilution: 1:5000



Western Blot: Coatomer Subunit Delta Antibody (189) [NBP2-43773] - Analysis of A. 30 ug 293T whole cell lysate/extract B. 30 ug A431 whole cell lysate/extract C. 30 ug HeLa whole cell lysate/extract D. 30 ug HepG2 whole cell lysate/extract 7.5 % SDS-PAGE COPD antibody [189] dilution: 1:10000.



Immunohistochemistry-Paraffin: Coatomer Subunit Delta Antibody (189) [NBP2-43773] - Coatomer Subunit Delta Antibody (189) detects Coatomer Subunit Delta protein at cytoplasm by immunohistochemical analysis. Sample: Paraffin-embedded rat duodenum. Coatomer Subunit Delta stained by Coatomer Subunit Delta Antibody (189) diluted at 1:200. Antigen Retrieval: Citrate buffer, pH 6.0, 15 min.



Coatomer Subunit Delta Antibody (189) [NBP2-43773] - Coatomer Subunit Delta Antibody (189) detects Coatomer Subunit Delta protein by immunohistochemical analysis. Sample: Frozen-sectioned mouse mouse cerebellum. Green: Coatomer Subunit Delta stained by Coatomer Subunit Delta Antibody (189) diluted at 1:250. Red: Calbindin, stained by Calbindin antibody diluted at 1:500. Blue: Fluoroshield with DAPI. Antigen Retrieval: Citrate buffer, pH 6.0, 10 min.





### **Novus Biologicals USA**

10730 E. Briarwood Avenue  
Centennial, CO 80112  
USA  
Phone: 303.730.1950  
Toll Free: 1.888.506.6887  
Fax: 303.730.1966  
nb-customerservice@bio-techne.com

### **Bio-Techne Canada**

21 Canmotor Ave  
Toronto, ON M8Z 4E6  
Canada  
Phone: 905.827.6400  
Toll Free: 855.668.8722  
Fax: 905.827.6402  
canada.inquires@bio-techne.com

### **Bio-Techne Ltd**

19 Barton Lane  
Abingdon Science Park  
Abingdon, OX14 3NB, United Kingdom  
Phone: (44) (0) 1235 529449  
Free Phone: 0800 37 34 15  
Fax: (44) (0) 1235 533420  
info.EMEA@bio-techne.com

### **General Contact Information**

www.novusbio.com  
Technical Support: nb-technical@bio-techne.com  
Orders: nb-customerservice@bio-techne.com  
General: novus@novusbio.com

### **Products Related to NBP2-43773**

---

NBP2-33376H	Blue Marker Antibody (6F4-F6) [HRP]
HAF007	Goat anti-Mouse IgG Secondary Antibody [HRP]
NB7539	Goat anti-Mouse IgG (H+L) Secondary Antibody [HRP]
NBP2-27231	Mouse IgG2b Isotype Control (MPC-11)

---

### **Limitations**

This product is for research use only and is not approved for use in humans or in clinical diagnosis. Primary Antibodies are guaranteed for 1 year from date of receipt.

For more information on our 100% guarantee, please visit [www.novusbio.com/guarantee](http://www.novusbio.com/guarantee)

Earn gift cards/discounts by submitting a review: [www.novusbio.com/reviews/submit/NBP2-43773](http://www.novusbio.com/reviews/submit/NBP2-43773)

Earn gift cards/discounts by submitting a publication using this product:  
[www.novusbio.com/publications](http://www.novusbio.com/publications)

