

Product Datasheet

Pancreatic Polypeptide/PP Antibody (6512) - Azide and BSA Free **NBP2-43741**

Unit Size: 0.1 ml

Aliquot and store at -20C or -80C. Avoid freeze-thaw cycles.

www.novusbio.com



technical@novusbio.com

Protocols, Publications, Related Products, Reviews, Research Tools and Images at:
www.novusbio.com/NBP2-43741

Updated 9/9/2025 v.20.1

Earn rewards for product reviews and publications.

Submit a publication at www.novusbio.com/publications

Submit a review at www.novusbio.com/reviews/destination/NBP2-43741



NBP2-43741

Pancreatic Polypeptide/PP Antibody (6512) - Azide and BSA Free

| Product Information | |
|--------------------------------|--|
| Unit Size | 0.1 ml |
| Concentration | Concentrations vary lot to lot. See vial label for concentration. If unlisted please contact technical services. |
| Storage | Aliquot and store at -20C or -80C. Avoid freeze-thaw cycles. |
| Clonality | Monoclonal |
| Clone | 6512 |
| Preservative | No Preservative |
| Isotype | IgG2b |
| Purity | Protein G purified |
| Buffer | PBS |
| Target Molecular Weight | 10 kDa |

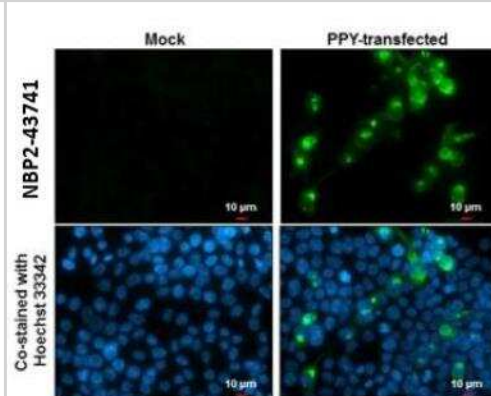
| Product Description | |
|----------------------------|---|
| Description | Novus Biologicals Mouse Pancreatic Polypeptide/PP Antibody (6512) - Azide and BSA Free (NBP2-43741) is a monoclonal antibody validated for use in IHC, WB and ICC/IF. All Novus Biologicals antibodies are covered by our 100% guarantee. |
| Host | Mouse |
| Gene ID | 5539 |
| Gene Symbol | PPY |
| Species | Human, Mouse |
| Immunogen | Carrier-protein conjugated synthetic peptide encompassing a sequence within the center region of human Pancreatic Polypeptide/PP. The exact sequence is proprietary. |

| Product Application Details | |
|------------------------------------|---|
| Applications | Western Blot, Immunohistochemistry-Paraffin, Immunocytochemistry/ Immunofluorescence |
| Recommended Dilutions | Western Blot 1:1000-1:10000, Immunocytochemistry/ Immunofluorescence 1:100-1:1000, Immunohistochemistry-Paraffin 1:100-1:1000 |

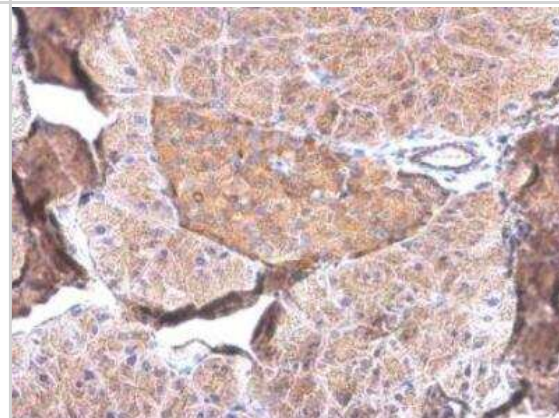


Images

Immunocytochemistry/Immunofluorescence: Pancreatic Polypeptide/PP Antibody (6512) [NBP2-43741] - Pancreatic Polypeptide antibody detects Pancreatic Polypeptide protein at cytoplasm by immunofluorescent analysis. Sample: Mock and transfected 293T cells were fixed in 4% paraformaldehyde at RT for 15 min. Green: Pancreatic Polypeptide stained by Pancreatic Polypeptide antibody diluted at 1:2000. Blue: Hoechst 33342 staining. Scale bar= 10um.



Immunohistochemistry-Paraffin: Pancreatic Polypeptide/PP Antibody (6512) [NBP2-43741] - Pancreatic Polypeptide antibody detects Pancreatic Polypeptide protein at cytoplasm by immunohistochemical analysis. Sample: Paraffin-embedded mouse pancreas. Pancreatic Polypeptide stained by Pancreatic Polypeptide antibody diluted at 1:500. Antigen Retrieval: Citrate buffer, pH 6.0, 15 min

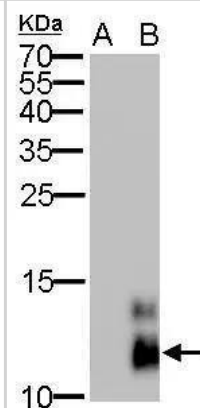


Pancreatic polypeptide antibody [GT6512] detects PPY protein by Western blot analysis.

A. 30 ug 293T whole cell lysate/extract

B. 30 ug whole cell lysate/extract of human PPY-transfected 293T cells
15 % SDS-PAGE

Pancreatic polypeptide antibody [GT6512] (NBP2-43741) dilution:
1:5000





Novus Biologicals USA

10730 E. Briarwood Avenue
Centennial, CO 80112
USA
Phone: 303.730.1950
Toll Free: 1.888.506.6887
Fax: 303.730.1966
nb-customerservice@bio-techne.com

Bio-Techne Canada

21 Canmotor Ave
Toronto, ON M8Z 4E6
Canada
Phone: 905.827.6400
Toll Free: 855.668.8722
Fax: 905.827.6402
canada.inquires@bio-techne.com

Bio-Techne Ltd

19 Barton Lane
Abingdon Science Park
Abingdon, OX14 3NB, United Kingdom
Phone: (44) (0) 1235 529449
Free Phone: 0800 37 34 15
Fax: (44) (0) 1235 533420
info.EMEA@bio-techne.com

General Contact Information

www.novusbio.com
Technical Support: nb-technical@bio-techne.com
Orders: nb-customerservice@bio-techne.com
General: novus@novusbio.com

Products Related to NBP2-43741

| | |
|-------------|--|
| NBP2-33376H | Blue Marker Antibody (6F4-F6) [HRP] |
| HAF007 | Goat anti-Mouse IgG Secondary Antibody [HRP] |
| NB7539 | Goat anti-Mouse IgG (H+L) Secondary Antibody [HRP] |
| NBP2-27231 | Mouse IgG2b Isotype Control (MPC-11) |

Limitations

This product is for research use only and is not approved for use in humans or in clinical diagnosis. Primary Antibodies are guaranteed for 1 year from date of receipt.

For more information on our 100% guarantee, please visit www.novusbio.com/guarantee

Earn gift cards/discounts by submitting a review: www.novusbio.com/reviews/submit/NBP2-43741

Earn gift cards/discounts by submitting a publication using this product:
www.novusbio.com/publications

