

Product Datasheet

Enolase 1 Antibody (2217) - Azide and BSA Free NBP2-43702

Unit Size: 0.1 ml

Aliquot and store at -20C or -80C. Avoid freeze-thaw cycles.

www.novusbio.com



technical@novusbio.com

Protocols, Publications, Related Products, Reviews, Research Tools and Images at:
www.novusbio.com/NBP2-43702

Updated 9/9/2025 v.20.1

Earn rewards for product
reviews and publications.

Submit a publication at www.novusbio.com/publications

Submit a review at www.novusbio.com/reviews/destination/NBP2-43702



NBP2-43702

Enolase 1 Antibody (2217) - Azide and BSA Free

Product Information	
Unit Size	0.1 ml
Concentration	Concentrations vary lot to lot. See vial label for concentration. If unlisted please contact technical services.
Storage	Aliquot and store at -20C or -80C. Avoid freeze-thaw cycles.
Clonality	Monoclonal
Clone	2217
Preservative	No Preservative
Isotype	IgG2b
Purity	Protein G purified
Buffer	PBS
Target Molecular Weight	47 kDa

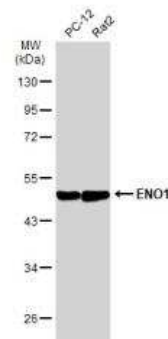
Product Description	
Description	Novus Biologicals Mouse Enolase 1 Antibody (2217) - Azide and BSA Free (NBP2-43702) is a monoclonal antibody validated for use in WB. All Novus Biologicals antibodies are covered by our 100% guarantee.
Host	Mouse
Gene ID	2023
Gene Symbol	ENO1
Species	Human, Rat
Reactivity Notes	Chimpanzee (100%).
Immunogen	Recombinant protein encompassing a sequence within the center region of human Enolase 1. The exact sequence is proprietary.

Product Application Details	
Applications	Western Blot
Recommended Dilutions	Western Blot 1:5000-1:20000

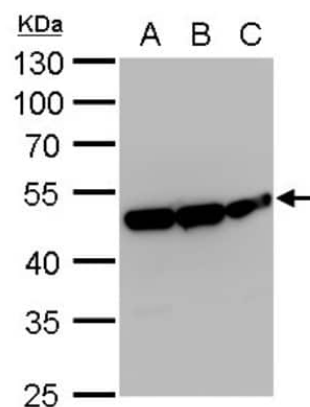


Images

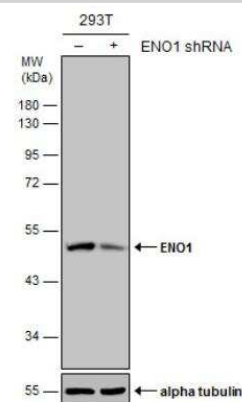
Western Blot: Enolase 1 Antibody (2217) [NBP2-43702] - Various whole cell extracts (30 ug) were separated by 10% SDS-PAGE, and the membrane was blotted with ENO1 antibody diluted at 1:10000. HRP-conjugated anti-mouse IgG antibody was used to detect the primary antibody.



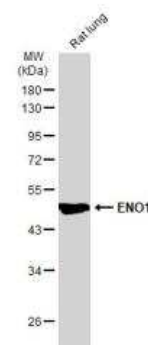
Western Blot: Enolase 1 Antibody (2217) [NBP2-43702] - Analysis of A. 30 ug A549 whole cell lysate/extract B. 30 ug H1299 whole cell lysate/extract C. 30 ug HCT116 whole cell lysate/extract 10 % SDS-PAGE ENO1 antibody [2217] dilution: 1:10000.



Western Blot: Enolase 1 Antibody (2217) [NBP2-43702] - Non-transfected (-) and transfected (+) 293T whole cell extracts (30 ug) were separated by 10% SDS-PAGE, and the membrane was blotted with ENO1 antibody [2217].



Western Blot: Enolase 1 Antibody (2217) [NBP2-43702] - Rat tissue extract (50 ug) was separated by 10% SDS-PAGE, and the membrane was blotted with ENO1 antibody diluted at 1:10000. HRP-conjugated anti-mouse IgG antibody was used to detect the primary antibody.





Novus Biologicals USA

10730 E. Briarwood Avenue
Centennial, CO 80112
USA
Phone: 303.730.1950
Toll Free: 1.888.506.6887
Fax: 303.730.1966
nb-customerservice@bio-techne.com

Bio-Techne Canada

21 Canmotor Ave
Toronto, ON M8Z 4E6
Canada
Phone: 905.827.6400
Toll Free: 855.668.8722
Fax: 905.827.6402
canada.inquires@bio-techne.com

Bio-Techne Ltd

19 Barton Lane
Abingdon Science Park
Abingdon, OX14 3NB, United Kingdom
Phone: (44) (0) 1235 529449
Free Phone: 0800 37 34 15
Fax: (44) (0) 1235 533420
info.EMEA@bio-techne.com

General Contact Information

www.novusbio.com
Technical Support: nb-technical@bio-techne.com
Orders: nb-customerservice@bio-techne.com
General: novus@novusbio.com

Products Related to NBP2-43702

NBP2-33376H	Blue Marker Antibody (6F4-F6) [HRP]
HAF007	Goat anti-Mouse IgG Secondary Antibody [HRP]
NB7539	Goat anti-Mouse IgG (H+L) Secondary Antibody [HRP]
NBP2-27231	Mouse IgG2b Isotype Control (MPC-11)

Limitations

This product is for research use only and is not approved for use in humans or in clinical diagnosis. Primary Antibodies are guaranteed for 1 year from date of receipt.

For more information on our 100% guarantee, please visit www.novusbio.com/guarantee

Earn gift cards/discounts by submitting a review: www.novusbio.com/reviews/submit/NBP2-43702

Earn gift cards/discounts by submitting a publication using this product:
www.novusbio.com/publications

