

Product Datasheet

CS Citrate Synthase Antibody (1761) - Azide and BSA Free NBP2-43648

Unit Size: 0.1 ml

Aliquot and store at -20C or -80C. Avoid freeze-thaw cycles.

www.novusbio.com



technical@novusbio.com

Reviews: 1 Publications: 1

Protocols, Publications, Related Products, Reviews, Research Tools and Images at:
www.novusbio.com/NBP2-43648

Updated 9/25/2025 v.20.1

**Earn rewards for product
reviews and publications.**

Submit a publication at www.novusbio.com/publications

Submit a review at www.novusbio.com/reviews/destination/NBP2-43648



NBP2-43648**CS Citrate Synthase Antibody (1761) - Azide and BSA Free**

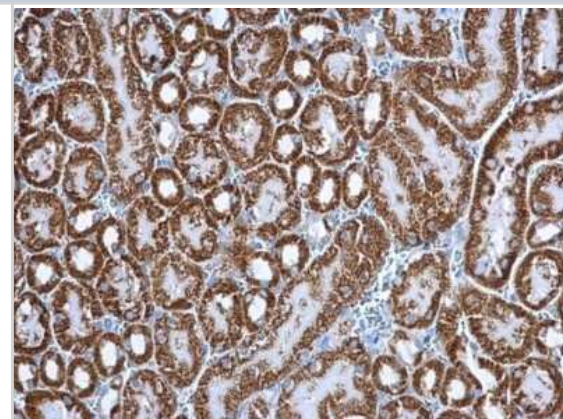
Product Information	
Unit Size	0.1 ml
Concentration	Concentrations vary lot to lot. See vial label for concentration. If unlisted please contact technical services.
Storage	Aliquot and store at -20C or -80C. Avoid freeze-thaw cycles.
Clonality	Monoclonal
Clone	1761
Preservative	No Preservative
Isotype	IgG2a
Purity	Protein G purified
Buffer	PBS
Target Molecular Weight	52 kDa

Product Description	
Description	Novus Biologicals Mouse CS Citrate Synthase Antibody (1761) - Azide and BSA Free (NBP2-43648) is a monoclonal antibody validated for use in IHC, WB and ICC/IF. Anti-CS Citrate Synthase Antibody: Cited in 1 publication. All Novus Biologicals antibodies are covered by our 100% guarantee.
Host	Mouse
Gene ID	1431
Gene Symbol	CS
Species	Human, Mouse, Rat, Zebrafish
Reactivity Notes	Xenopus laevis (91%).
Immunogen	Recombinant protein encompassing a sequence within the center region of human Citrate synthetase. The exact sequence is proprietary.

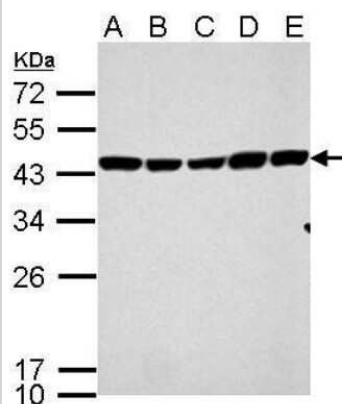
Product Application Details	
Applications	Western Blot, Immunohistochemistry-Paraffin, Immunocytochemistry/Immunofluorescence, Immunohistochemistry
Recommended Dilutions	Western Blot 1:500-1:3000, Immunohistochemistry 1:100-1:1000, Immunocytochemistry/ Immunofluorescence 1:100-1:1000, Immunohistochemistry-Paraffin 1:100-1:1000

Images

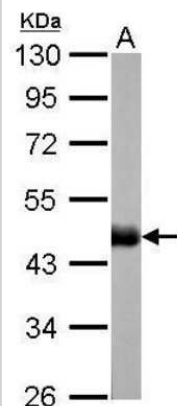
Immunohistochemistry-Paraffin: CS Citrate Synthase Antibody (1761) [NBP2-43648] - Analysis of mouse kidney. Citrate synthetase antibody [1761] dilution: 1:200.



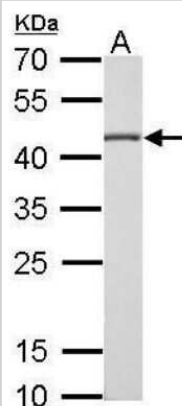
Western Blot: CS Citrate Synthase Antibody (1761) [NBP2-43648] - Analysis of A. 30 ug 293T whole cell lysate/extract B. 30 ug A431 whole cell lysate/extract C. 30 ug HeLa whole cell lysate/extract D. 30 ug HepG2 whole cell lysate/extract E. 30 ug A375 whole cell lysate/extract 12 % SDS-PAGE Citrate synthetase antibody [1761] dilution: 1:1000.



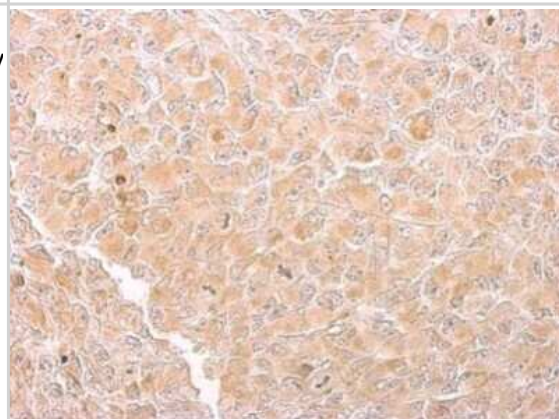
Western Blot: CS Citrate Synthase Antibody (1761) [NBP2-43648] - Analysis of A. 30 ug zebrafish brain lysate/extract 10 % SDS-PAGE Citrate synthetase antibody [1761] dilution: 1:1000



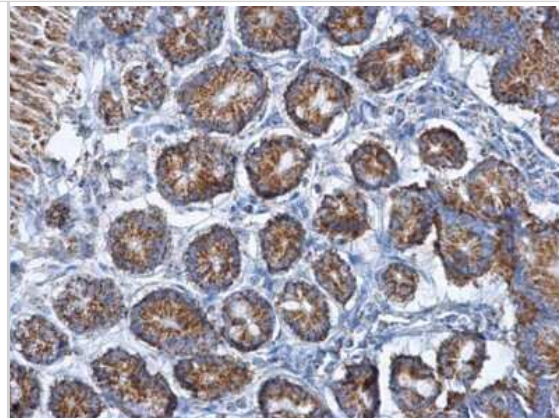
Western Blot: CS Citrate Synthase Antibody (1761) [NBP2-43648] - Analysis of A. 50 ug mouse brain lysate/extract 12 % SDS-PAGE Citrate synthetase antibody [1761] dilution: 1:1000.



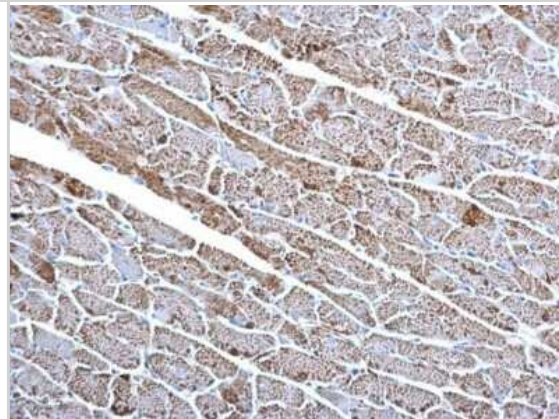
Immunohistochemistry-Paraffin: CS Citrate Synthase Antibody (1761) [NBP2-43648] - Analysis of H1299 xenograft. Citrate synthetase antibody dilution: 1:200.



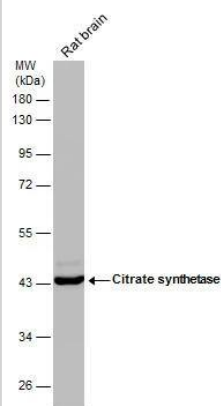
Immunohistochemistry-Paraffin: CS Citrate Synthase Antibody (1761) [NBP2-43648] - Analysis of mouse duodenum. Citrate synthetase antibody [1761] dilution: 1:200.



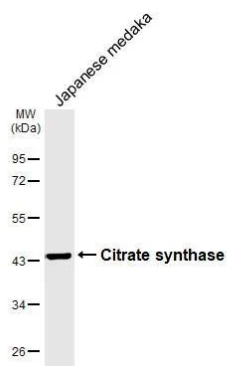
Immunohistochemistry-Paraffin: CS Citrate Synthase Antibody (1761) [NBP2-43648] - Analysis of mouse heart. Citrate synthetase antibody [1761] dilution: 1:200.



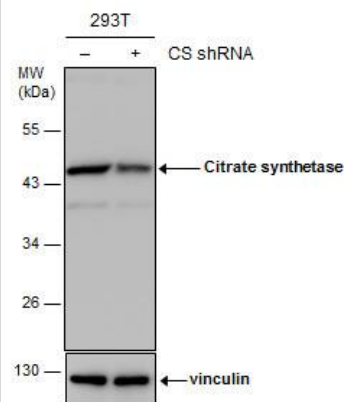
Rat tissue extract (50 ug) was separated by 10% SDS-PAGE, and the membrane was blotted with Citrate synthetase antibody [GT1761] (NBP2-43648) diluted at 1:1000. The HRP-conjugated anti-mouse IgG antibody was used to detect the primary antibody.



Whole Japanese medaka extract (30 ug) was separated by 10% SDS-PAGE, and the membrane was blotted with Citrate synthase antibody [GT1761] (NBP2-43648) diluted at 1:1000. The HRP-conjugated anti-mouse IgG antibody was used to detect the primary antibody.



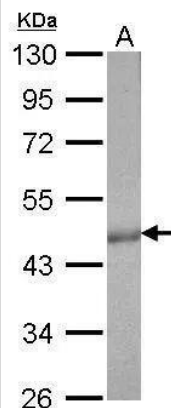
Non-transfected (-) and transfected (+) 293T whole cell extracts (30 ug) were separated by 10% SDS-PAGE, and the membrane was blotted with Citrate synthetase antibody [GT1761] (NBP2-43648) diluted at 1:1000. The HRP-conjugated anti-mouse IgG antibody was used to detect the primary antibody.



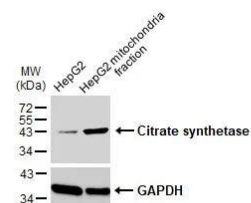
Citrate synthetase antibody [GT1761] detects CS protein by western blot analysis.

A. 30 ug zebrafish heart lysate/extract
10% SDS-PAGE

Citrate synthetase antibody [GT1761] (NBP2-43648) dilution: 1:1000
The HRP-conjugated anti-mouse IgG antibody was used to detect the primary antibody.



HepG2 and mitochondria extracts (30 ug) were separated by SDS-PAGE, and the membrane was blotted with Citrate synthetase antibody [GT1761] (NBP2-43648) diluted at 1:1000. The HRP-conjugated anti-mouse IgG antibody was used to detect the primary antibody.



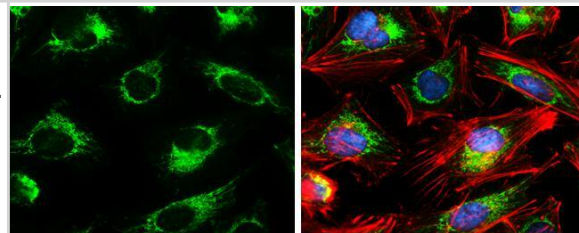
Citrate synthetase antibody [GT1761] detects Citrate synthetase protein at mitochondria by immunofluorescent analysis.

Sample: HeLa cells were fixed in 4% paraformaldehyde at RT for 15 min.

Green: Citrate synthetase protein stained by Citrate synthetase antibody [GT1761] (NBP2-43648) diluted at 1:200.

Red: phalloidin, a cytoskeleton marker, diluted at 1:50.

Blue: Hoechst 33342 staining.



Publications

Hurr C, Simonyan H, Morgan DA et al. Liver sympathetic denervation reverses obesity-induced hepatic steatosis J. Physiol. (Lond.) 2019-07-06 [PMID: 31278754]



Novus Biologicals USA

10730 E. Briarwood Avenue
Centennial, CO 80112
USA
Phone: 303.730.1950
Toll Free: 1.888.506.6887
Fax: 303.730.1966
nb-customerservice@bio-techne.com

Bio-Techne Canada

21 Canmotor Ave
Toronto, ON M8Z 4E6
Canada
Phone: 905.827.6400
Toll Free: 855.668.8722
Fax: 905.827.6402
canada.inquires@bio-techne.com

Bio-Techne Ltd

19 Barton Lane
Abingdon Science Park
Abingdon, OX14 3NB, United Kingdom
Phone: (44) (0) 1235 529449
Free Phone: 0800 37 34 15
Fax: (44) (0) 1235 533420
info.EMEA@bio-techne.com

General Contact Information

www.novusbio.com
Technical Support: nb-technical@bio-techne.com
Orders: nb-customerservice@bio-techne.com
General: novus@novusbio.com

Products Related to NBP2-43648

NBP2-33376H	Blue Marker Antibody (6F4-F6) [HRP]
HAF007	Goat anti-Mouse IgG Secondary Antibody [HRP]
NB7539	Goat anti-Mouse IgG (H+L) Secondary Antibody [HRP]
NBP1-96778	Mouse IgG2a Isotype Control (M2A)

Limitations

This product is for research use only and is not approved for use in humans or in clinical diagnosis. Primary Antibodies are guaranteed for 1 year from date of receipt.

For more information on our 100% guarantee, please visit www.novusbio.com/guarantee

Earn gift cards/discounts by submitting a review: www.novusbio.com/reviews/submit/NBP2-43648

Earn gift cards/discounts by submitting a publication using this product:
www.novusbio.com/publications

