

Product Datasheet

Glutamine Synthetase Antibody (1055) - Azide and BSA Free NBP2-43646

Unit Size: 0.1 ml

Aliquot and store at -20C or -80C. Avoid freeze-thaw cycles.

www.novusbio.com



technical@novusbio.com

Publications: 2

Protocols, Publications, Related Products, Reviews, Research Tools and Images at:
www.novusbio.com/NBP2-43646

Updated 9/25/2025 v.20.1

Earn rewards for product reviews and publications.

Submit a publication at www.novusbio.com/publications

Submit a review at www.novusbio.com/reviews/destination/NBP2-43646

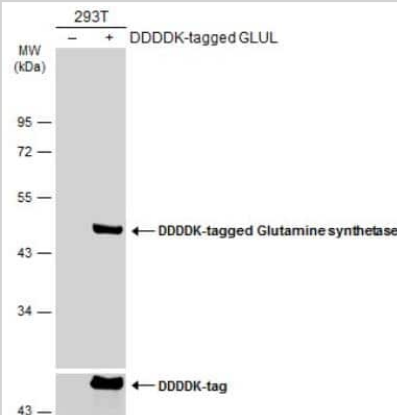


NBP2-43646**Glutamine Synthetase Antibody (1055) - Azide and BSA Free**

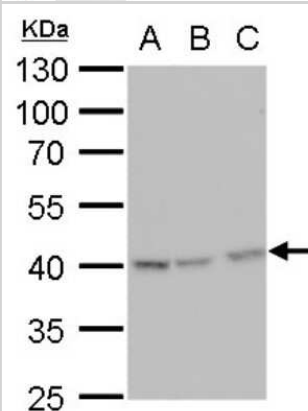
Product Information	
Unit Size	0.1 ml
Concentration	Concentrations vary lot to lot. See vial label for concentration. If unlisted please contact technical services.
Storage	Aliquot and store at -20C or -80C. Avoid freeze-thaw cycles.
Clonality	Monoclonal
Clone	1055
Preservative	No Preservative
Isotype	IgG1
Purity	Protein G purified
Buffer	PBS
Target Molecular Weight	42 kDa
Product Description	
Description	Novus Biologicals Mouse Glutamine Synthetase Antibody (1055) - Azide and BSA Free (NBP2-43646) is a monoclonal antibody validated for use in IHC, WB and ICC/IF. Anti-Glutamine Synthetase Antibody: Cited in 2 publications. All Novus Biologicals antibodies are covered by our 100% guarantee.
Host	Mouse
Gene ID	2752
Gene Symbol	GLUL
Species	Human, Mouse, Rat
Reactivity Notes	Xenopus laevis (85%), Chicken (88%),
Immunogen	Full length human Glutamine Synthetase Recombinant protein.
Product Application Details	
Applications	Western Blot, Immunohistochemistry-Paraffin, Immunocytochemistry/ Immunofluorescence, Immunohistochemistry, Immunohistochemistry-Frozen, Immunohistochemistry Whole-Mount
Recommended Dilutions	Western Blot 1:500-1:3000, Immunohistochemistry 1:100-1:1000, Immunocytochemistry/ Immunofluorescence 1:100-1:1000, Immunohistochemistry-Paraffin 1:100-1:1000, Immunohistochemistry-Frozen 1:100-1:1000, Immunohistochemistry Whole-Mount Reported in scientific literature (PMID: 31337815)

Images

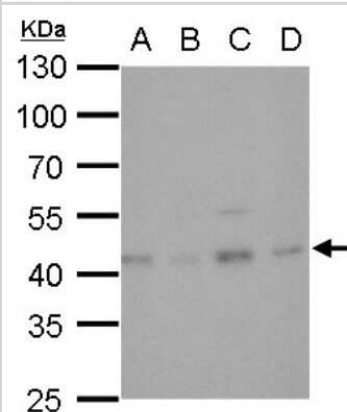
Western Blot: Glutamine Synthetase Antibody (1055) [NBP2-43646] - Non-transfected (-) and transfected (+) 293T whole cell extracts (30 ug) were separated by 10% SDS-PAGE, and the membrane was blotted with Glutamine synthetase antibody [1055] diluted at 1:1000. The HRP-conjugated anti-mouse IgG antibody (NBP2-19382) was used to detect the primary antibody.



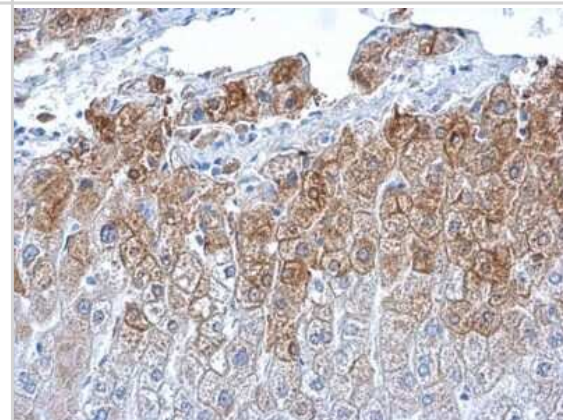
Western Blot: Glutamine Synthetase Antibody (1055) [NBP2-43646] - Analysis of A. 30 ug 293T whole cell lysate/extract B. 30 ug HeLa whole cell lysate/extract C. 30 ug HepG2 whole cell lysate/extract 10 % SDS-PAGE Glutamine synthetase antibody [1055] dilution: 1:1000



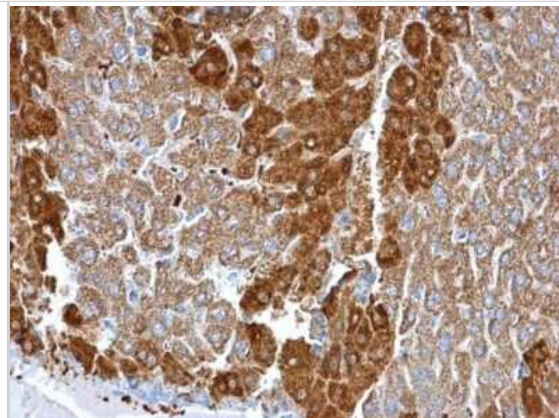
Western Blot: Glutamine Synthetase Antibody (1055) [NBP2-43646] - Analysis of A. 30 ug U87-MG whole cell lysate/extract B. 30 ug SK-N-SH whole cell lysate/extract C. 30 ug IMR32 whole cell lysate/extract D. 30 ug SK-N-AS whole cell lysate/extract 10 % SDS-PAGE Glutamine synthetase antibody [1055] dilution: 1:1000



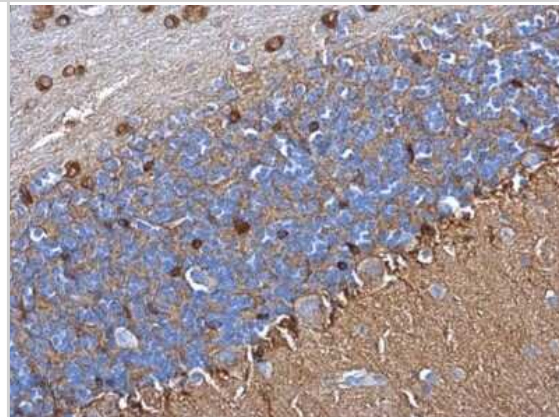
Immunohistochemistry-Paraffin: Glutamine Synthetase Antibody (1055) [NBP2-43646] - Analysis of human hepatoma. Glutamine synthetase antibody [1055] dilution: 1:500.



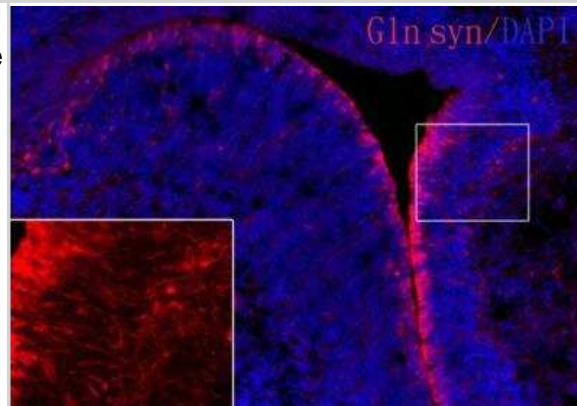
Immunohistochemistry-Paraffin: Glutamine Synthetase Antibody (1055) [NBP2-43646] - Analysis of mouse skin. Glutamine synthetase antibody [1055] dilution: 1:500.



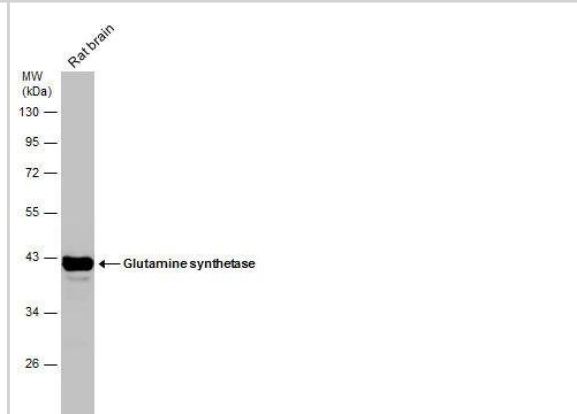
Immunohistochemistry-Paraffin: Glutamine Synthetase Antibody (1055) [NBP2-43646] - Analysis of rat hind brain. Glutamine synthetase antibody [1055] dilution: 1:500.



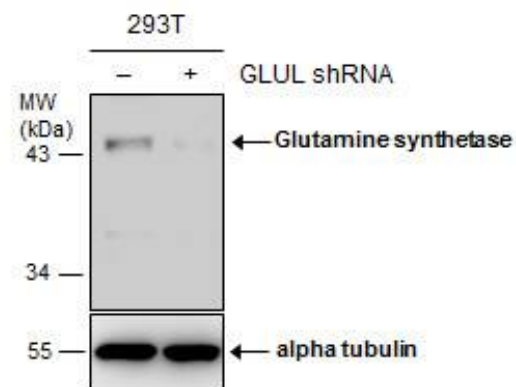
Immunohistochemistry-Frozen: Glutamine Synthetase Antibody (1055) [NBP2-43646] - Glutamine synthetase antibody [1055] detects Glutamine synthetase protein on embryonic mouse brain by immunohistochemical analysis. Sample: Frozen section of embryonic mouse brain (mE18.5). Red: Glutamine synthetase antibody [1055] diluted at 1:500. Blue: DAPI



Rat tissue extract (50 ug) was separated by 10% SDS-PAGE, and the membrane was blotted with Glutamine synthetase antibody [GT1055] (NBP2-43646) diluted at 1:5000.



Non-transfected (-) and transfected (+) 293T whole cell extracts (30 ug) were separated by 10% SDS-PAGE, and the membrane was blotted with Glutamine synthetase antibody [GT1055] (NBP2-43646) diluted at 1:500.



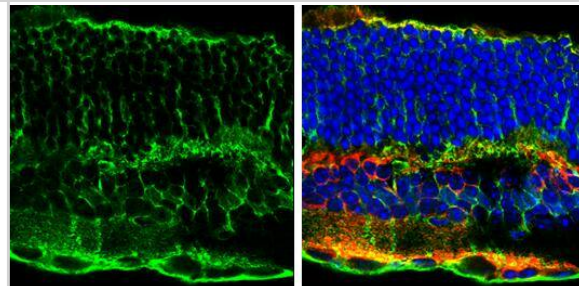
Glutamine synthetase antibody [GT1055] detects Glutamine synthetase protein by immunohistochemical analysis.

Sample: Frozen sectioned adult mouse retina.

Green: Glutamine synthetase protein stained by Glutamine synthetase antibody [GT1055] (NBP2-43646) diluted at 1:250.

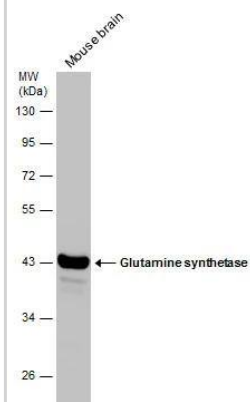
Red: PKC alpha protein stained by PKC alpha antibody [GT1876] diluted at 1:250.

Blue: Fluoroshield with DAPI .



Mouse tissue extract (50 ug) was separated by 10% SDS-PAGE, and the membrane was blotted with Glutamine synthetase antibody (NBP2-43646) diluted at 1:1000. ❌

Mouse tissue extract (50 ug) was separated by 10% SDS-PAGE, and the membrane was blotted with Glutamine synthetase antibody [GT1055] (NBP2-43646) diluted at 1:5000.



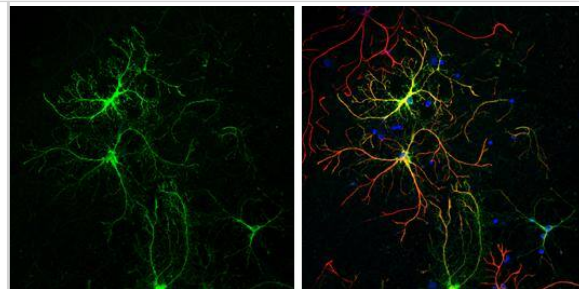
Glutamine synthetase antibody [GT1055] detects Glutamine synthetase protein at cytoplasm by immunofluorescent analysis.

Sample: Cultured rat E18 primary cortical neuron, DIV 8. Cells were fixed in 4% paraformaldehyde at RT for 15 min.

Green: Glutamine synthetase protein stained by Glutamine synthetase antibody [GT1055] (NBP2-43646) diluted at 1:250.

Red: GFAP, stained by GFAP antibody diluted at 1:250.

Blue: Fluoroshield with DAPI .



Publications

Wang T, Zhang C, Xie H et al. Anti-VEGF therapy prevents Müller intracellular edema by decreasing VEGF-A in diabetic retinopathy Eye and vision (London, England) 2021-04-17 [PMID: 33865457]

Flores T, Huang T, Bhuckory M et al. Honeycomb-shaped electro-neural interface enables cellular-scale pixels in subretinal prosthesis Sci Rep 2019-07-23 [PMID: 31337815] (IHC-WhMt)



Novus Biologicals USA

10730 E. Briarwood Avenue
Centennial, CO 80112
USA
Phone: 303.730.1950
Toll Free: 1.888.506.6887
Fax: 303.730.1966
nb-customerservice@bio-techne.com

Bio-Techne Canada

21 Canmotor Ave
Toronto, ON M8Z 4E6
Canada
Phone: 905.827.6400
Toll Free: 855.668.8722
Fax: 905.827.6402
canada.inquires@bio-techne.com

Bio-Techne Ltd

19 Barton Lane
Abingdon Science Park
Abingdon, OX14 3NB, United Kingdom
Phone: (44) (0) 1235 529449
Free Phone: 0800 37 34 15
Fax: (44) (0) 1235 533420
info.EMEA@bio-techne.com

General Contact Information

www.novusbio.com
Technical Support: nb-technical@bio-techne.com
Orders: nb-customerservice@bio-techne.com
General: novus@novusbio.com

Products Related to NBP2-43646

NBP2-33376H	Blue Marker Antibody (6F4-F6) [HRP]
HAF007	Goat anti-Mouse IgG Secondary Antibody [HRP]
NB7539	Goat anti-Mouse IgG (H+L) Secondary Antibody [HRP]
NBP1-97005-0.5mg	Mouse IgG1 Isotype Control (MG1)

Limitations

This product is for research use only and is not approved for use in humans or in clinical diagnosis. Primary Antibodies are guaranteed for 1 year from date of receipt.

For more information on our 100% guarantee, please visit www.novusbio.com/guarantee

Earn gift cards/discounts by submitting a review: www.novusbio.com/reviews/submit/NBP2-43646

Earn gift cards/discounts by submitting a publication using this product:
www.novusbio.com/publications

