

# Product Datasheet

## GEF-H1 Antibody (336) - Azide and BSA Free NBP2-43635

Unit Size: 0.1 ml

Aliquot and store at -20C or -80C. Avoid freeze-thaw cycles.

[www.novusbio.com](http://www.novusbio.com)



[technical@novusbio.com](mailto:technical@novusbio.com)

Protocols, Publications, Related Products, Reviews, Research Tools and Images at:  
[www.novusbio.com/NBP2-43635](http://www.novusbio.com/NBP2-43635)

Updated 9/9/2025 v.20.1

Earn rewards for product  
reviews and publications.

Submit a publication at [www.novusbio.com/publications](http://www.novusbio.com/publications)

Submit a review at [www.novusbio.com/reviews/destination/NBP2-43635](http://www.novusbio.com/reviews/destination/NBP2-43635)



**NBP2-43635**

GEF-H1 Antibody (336) - Azide and BSA Free

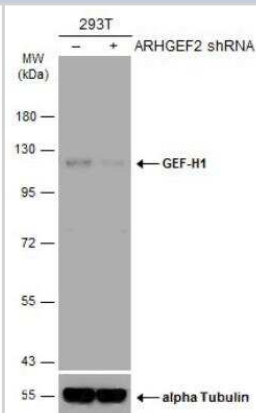
Product Information	
Unit Size	0.1 ml
Concentration	Concentrations vary lot to lot. See vial label for concentration. If unlisted please contact technical services.
Storage	Aliquot and store at -20C or -80C. Avoid freeze-thaw cycles.
Clonality	Monoclonal
Clone	336
Preservative	No Preservative
Isotype	IgG1
Purity	Protein G purified
Buffer	PBS

Product Description	
Description	Novus Biologicals Mouse GEF-H1 Antibody (336) - Azide and BSA Free (NBP2-43635) is a monoclonal antibody validated for use in WB and ICC/IF. All Novus Biologicals antibodies are covered by our 100% guarantee.
Host	Mouse
Gene ID	9181
Gene Symbol	ARHGEF2
Species	Human, Mouse, Rat
Immunogen	Recombinant protein encompassing a sequence within the C-terminus region of human GEF-H1. The exact sequence is proprietary.

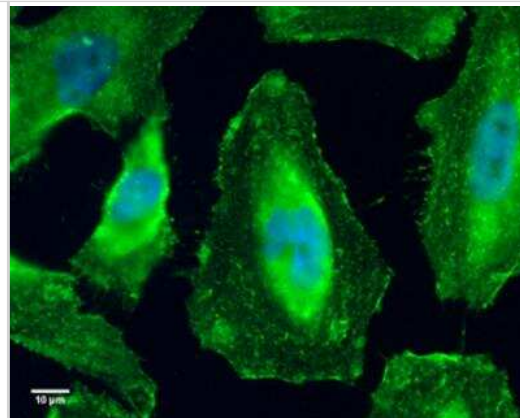
Product Application Details	
Applications	Western Blot, Immunocytochemistry/ Immunofluorescence
Recommended Dilutions	Western Blot 1:500-1:3000, Immunocytochemistry/ Immunofluorescence 1:50-1:1000

**Images**

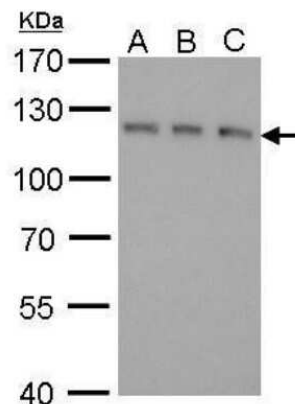
Western Blot: GEF-H1 Antibody (336) [NBP2-43635] - Non-transfected (-) and transfected (+) 293T whole cell extracts (30 ug) were separated by 7.5% SDS-PAGE, and the membrane was blotted with GEF-H1 antibody (336) diluted at 1:500. HRP-conjugated anti-mouse IgG antibody was used to detect the primary antibody.



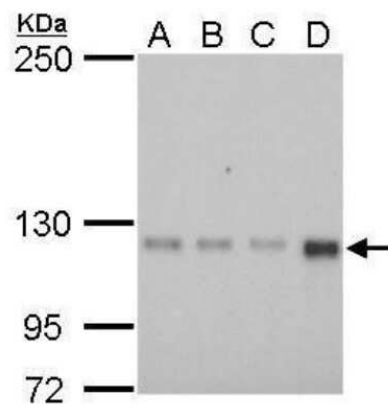
Immunocytochemistry/Immunofluorescence: GEF-H1 Antibody (336) [NBP2-43635] - Analysis of Sample: HeLa cells were fixed in 4% paraformaldehyde at room temperature. Green: GEF-H1 protein stained by GEF-H1 antibody [336] diluted at 1:50. Blue: Hoechst 33342 staining.



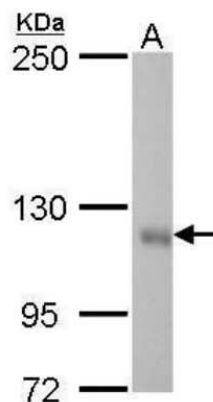
Western Blot: GEF-H1 Antibody (336) [NBP2-43635] - Analysis of A. 30 ug 293T whole cell lysate/extract B. 30 ug A431 whole cell lysate/extract C. 30 ug HeLa whole cell lysate/extract 7.5 % SDS-PAGE GEF-H1 antibody [336] dilution: 1:500



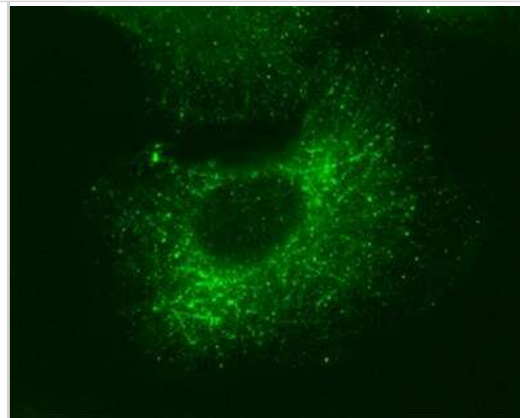
Western Blot: GEF-H1 Antibody (336) [NBP2-43635] - Analysis of A. 30 ug C8D30 whole cell lysate/extract B. 30 ug BCL-1 whole cell lysate/extract C. 30 ug Raw264.7 whole cell lysate/extract D. 30 ug C2C12 whole cell lysate/extract 5 % SDS-PAGE GEF-H1 antibody [336] dilution: 1:500



Western Blot: GEF-H1 Antibody (336) [NBP2-43635] - Analysis of A. 30 ug Rat-2 whole cell lysate/extract 5 % SDS-PAGE GEF-H1 antibody [336] dilution: 1:500.



Immunocytochemistry/Immunofluorescence: GEF-H1 Antibody (336) [NBP2-43635] - Analysis of Sample: MDA-MB-231 cells were fixed in methanol for 5 min. Green: GEF-H1 protein stained by GEF-H1 antibody [336] diluted at 1:50.





### **Novus Biologicals USA**

10730 E. Briarwood Avenue  
Centennial, CO 80112  
USA  
Phone: 303.730.1950  
Toll Free: 1.888.506.6887  
Fax: 303.730.1966  
nb-customerservice@bio-techne.com

### **Bio-Techne Canada**

21 Canmotor Ave  
Toronto, ON M8Z 4E6  
Canada  
Phone: 905.827.6400  
Toll Free: 855.668.8722  
Fax: 905.827.6402  
canada.inquires@bio-techne.com

### **Bio-Techne Ltd**

19 Barton Lane  
Abingdon Science Park  
Abingdon, OX14 3NB, United Kingdom  
Phone: (44) (0) 1235 529449  
Free Phone: 0800 37 34 15  
Fax: (44) (0) 1235 533420  
info.EMEA@bio-techne.com

### **General Contact Information**

www.novusbio.com  
Technical Support: nb-technical@bio-techne.com  
Orders: nb-customerservice@bio-techne.com  
General: novus@novusbio.com

### **Products Related to NBP2-43635**

---

NBP2-33376H	Blue Marker Antibody (6F4-F6) [HRP]
HAF007	Goat anti-Mouse IgG Secondary Antibody [HRP]
NB7539	Goat anti-Mouse IgG (H+L) Secondary Antibody [HRP]
NBP1-97005-0.5mg	Mouse IgG1 Isotype Control (MG1)

---

### **Limitations**

This product is for research use only and is not approved for use in humans or in clinical diagnosis. Primary Antibodies are guaranteed for 1 year from date of receipt.

For more information on our 100% guarantee, please visit [www.novusbio.com/guarantee](http://www.novusbio.com/guarantee)

Earn gift cards/discounts by submitting a review: [www.novusbio.com/reviews/submit/NBP2-43635](http://www.novusbio.com/reviews/submit/NBP2-43635)

Earn gift cards/discounts by submitting a publication using this product:  
[www.novusbio.com/publications](http://www.novusbio.com/publications)

