

Product Datasheet

ETHE1 Antibody (1621) - Azide and BSA Free NBP2-43632

Unit Size: 0.1 ml

Aliquot and store at -20C or -80C. Avoid freeze-thaw cycles.

www.novusbio.com



technical@novusbio.com

Protocols, Publications, Related Products, Reviews, Research Tools and Images at:
www.novusbio.com/NBP2-43632

Updated 9/9/2025 v.20.1

Earn rewards for product
reviews and publications.

Submit a publication at www.novusbio.com/publications

Submit a review at www.novusbio.com/reviews/destination/NBP2-43632



NBP2-43632

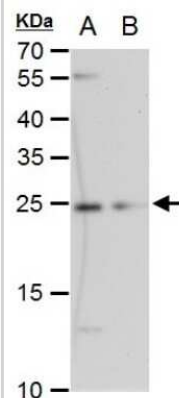
ETHE1 Antibody (1621) - Azide and BSA Free

| Product Information | |
|------------------------------------|--|
| Unit Size | 0.1 ml |
| Concentration | Concentrations vary lot to lot. See vial label for concentration. If unlisted please contact technical services. |
| Storage | Aliquot and store at -20C or -80C. Avoid freeze-thaw cycles. |
| Clonality | Monoclonal |
| Clone | 1621 |
| Preservative | No Preservative |
| Isotype | IgG2b |
| Purity | Protein G purified |
| Buffer | PBS |
| Product Description | |
| Description | Novus Biologicals Mouse ETHE1 Antibody (1621) - Azide and BSA Free (NBP2-43632) is a monoclonal antibody validated for use in WB and ICC/IF. All Novus Biologicals antibodies are covered by our 100% guarantee. |
| Host | Mouse |
| Gene ID | 23474 |
| Gene Symbol | ETHE1 |
| Species | Human, Mouse, Rat |
| Immunogen | Full length human ETHE1 Recombinant protein. |
| Product Application Details | |
| Applications | Western Blot, Immunocytochemistry/ Immunofluorescence |
| Recommended Dilutions | Western Blot 1:500-1:3000, Immunocytochemistry/ Immunofluorescence 1:100-1:1000 |

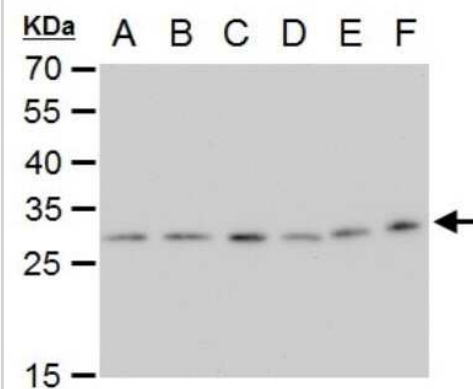


Images

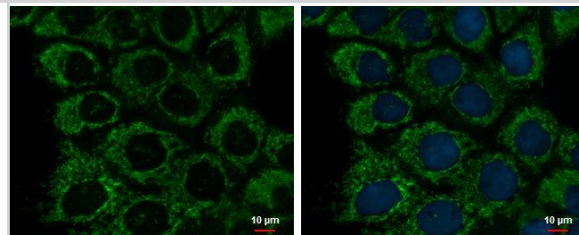
Western Blot: ETHE1 Antibody (1621) [NBP2-43632] - Analysis of A. 30 ug PC-12 whole cell extract B. 30 ug Rat2 whole cell extract 12 % SDS-PAGE ETHE1 antibody [1621] dilution: 1:1000



Western Blot: ETHE1 Antibody (1621) [NBP2-43632] - Analysis of A. 30 ug Neuro2A whole cell extract B. 30 ug GL261 whole cell extract C. 30 ug C8D30 whole cell extract D. 30 ug NIH-3T3 whole cell extract E. 30 ug Raw264.7 whole cell extract F. 30 ug C2C12 whole cell extract 12 % SDS-PAGE ETHE1 antibody [1621] dilution: 1:1000



ETHE1 antibody [GT1621] detects ETHE1 protein at mitochondria by immunofluorescent analysis.
 Sample: A431 cells were fixed in 2% paraformaldehyde/culture medium at 37C for 30 min.
 Green: ETHE1 protein stained by ETHE1 antibody [GT1621] (NBP2-43632) diluted at 1:500.
 Blue: Hoechst 33342 staining.





Novus Biologicals USA

10730 E. Briarwood Avenue
Centennial, CO 80112
USA
Phone: 303.730.1950
Toll Free: 1.888.506.6887
Fax: 303.730.1966
nb-customerservice@bio-techne.com

Bio-Techne Canada

21 Canmotor Ave
Toronto, ON M8Z 4E6
Canada
Phone: 905.827.6400
Toll Free: 855.668.8722
Fax: 905.827.6402
canada.inquires@bio-techne.com

Bio-Techne Ltd

19 Barton Lane
Abingdon Science Park
Abingdon, OX14 3NB, United Kingdom
Phone: (44) (0) 1235 529449
Free Phone: 0800 37 34 15
Fax: (44) (0) 1235 533420
info.EMEA@bio-techne.com

General Contact Information

www.novusbio.com
Technical Support: nb-technical@bio-techne.com
Orders: nb-customerservice@bio-techne.com
General: novus@novusbio.com

Products Related to NBP2-43632

| | |
|-------------|--|
| NBP2-33376H | Blue Marker Antibody (6F4-F6) [HRP] |
| HAF007 | Goat anti-Mouse IgG Secondary Antibody [HRP] |
| NB7539 | Goat anti-Mouse IgG (H+L) Secondary Antibody [HRP] |
| NBP2-27231 | Mouse IgG2b Isotype Control (MPC-11) |

Limitations

This product is for research use only and is not approved for use in humans or in clinical diagnosis. Primary Antibodies are guaranteed for 1 year from date of receipt.

For more information on our 100% guarantee, please visit www.novusbio.com/guarantee

Earn gift cards/discounts by submitting a review: www.novusbio.com/reviews/submit/NBP2-43632

Earn gift cards/discounts by submitting a publication using this product:
www.novusbio.com/publications

