

# Product Datasheet

## Coatomer Subunit Delta Antibody (1318) - Azide and BSA Free NBP2-43608

Unit Size: 0.1 ml

Aliquot and store at -20C or -80C. Avoid freeze-thaw cycles.

[www.novusbio.com](http://www.novusbio.com)



[technical@novusbio.com](mailto:technical@novusbio.com)

Protocols, Publications, Related Products, Reviews, Research Tools and Images at:  
[www.novusbio.com/NBP2-43608](http://www.novusbio.com/NBP2-43608)

Updated 9/9/2025 v.20.1

Earn rewards for product reviews and publications.

Submit a publication at [www.novusbio.com/publications](http://www.novusbio.com/publications)

Submit a review at [www.novusbio.com/reviews/destination/NBP2-43608](http://www.novusbio.com/reviews/destination/NBP2-43608)



**NBP2-43608**

Coatomer Subunit Delta Antibody (1318) - Azide and BSA Free

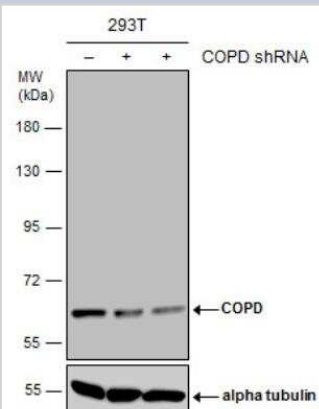
Product Information	
Unit Size	0.1 ml
Concentration	Concentrations vary lot to lot. See vial label for concentration. If unlisted please contact technical services.
Storage	Aliquot and store at -20C or -80C. Avoid freeze-thaw cycles.
Clonality	Monoclonal
Clone	1318
Preservative	No Preservative
Isotype	IgG1
Purity	Protein G purified
Buffer	PBS

Product Description	
Description	Novus Biologicals Mouse Coatomer Subunit Delta Antibody (1318) - Azide and BSA Free (NBP2-43608) is a monoclonal antibody validated for use in IHC, WB and ICC/IF. All Novus Biologicals antibodies are covered by our 100% guarantee.
Host	Mouse
Gene ID	372
Gene Symbol	ARCN1
Species	Human, Mouse, Rat
Immunogen	Recombinant protein encompassing a sequence within the center region of human Coatomer Subunit Delta. The exact sequence is proprietary.

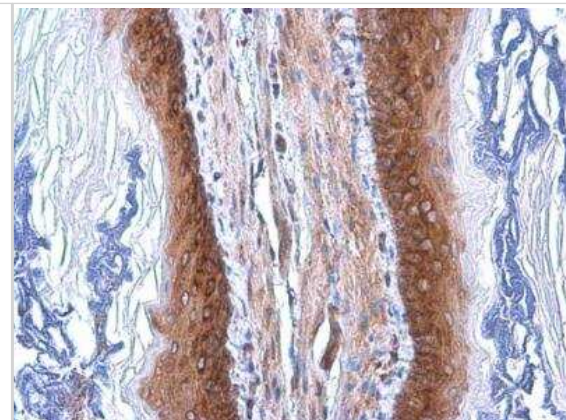
Product Application Details	
Applications	Western Blot, Immunohistochemistry-Paraffin, Immunocytochemistry/Immunofluorescence, Immunohistochemistry-Frozen
Recommended Dilutions	Western Blot 1:500-1:3000, Immunocytochemistry/Immunofluorescence 1:100-1:1000, Immunohistochemistry-Paraffin 1:100-1:1000, Immunohistochemistry-Frozen 1:100-1:1000

**Images**

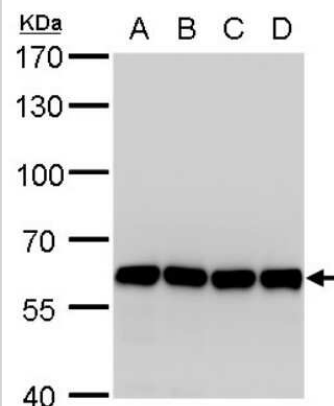
Western Blot: Coatomer Subunit Delta Antibody (1318) [NBP2-43608] - Non-transfected (-) and transfected (+) 293T whole cell extracts (30 ug) were separated by 7.5% SDS-PAGE, and the membrane was blotted with COPD antibody [1318].



Immunohistochemistry-Paraffin: Coatomer Subunit Delta Antibody (1318) [NBP2-43608] - Coatomer Subunit Delta Antibody (1318) detects Coatomer Subunit Delta protein at cytoplasm by immunohistochemical analysis. Sample: Paraffin-embedded mouse esophagus. Coatomer Subunit Delta stained by Coatomer Subunit Delta Antibody (1318) diluted at 1:200. Antigen Retrieval: Citrate buffer, pH 6.0, 15 min.



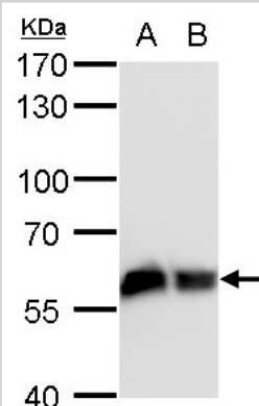
Western Blot: Coatomer Subunit Delta Antibody (1318) [NBP2-43608] - Analysis of A. 30 ug 293T whole cell lysate/extract B. 30 ug A431 whole cell lysate/extract C. 30 ug HeLa whole cell lysate/extract | D. 30 ug HepG2 whole cell lysate/extract 7.5 % SDS-PAGE COPD antibody [1318] dilution: 1:1000



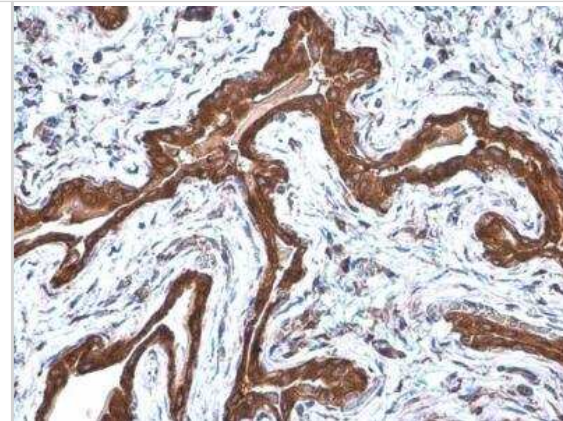
Western Blot: Coatomer Subunit Delta Antibody (1318) [NBP2-43608] - Analysis of A. 30 ug Neuro2A whole cell lysate/extract B. 30 ug GL261 whole cell lysate/extract C. 30 ug C8D30 whole cell lysate/extract D. 30 ug NIH-3T3 whole cell lysate/extract E. 30 ug BCL-1 whole cell lysate/extract F. 30 ug Raw 264.7 whole cell lysate/extract G. 30 ug C2C12 whole cell lysate/extract 7.5 % SDS-PAGE COPD antibody [1318] dilution: 1:1000



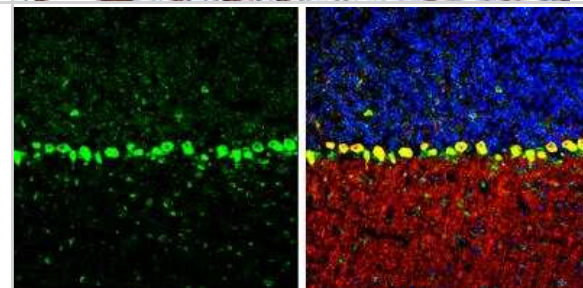
Western Blot: Coatomer Subunit Delta Antibody (1318) [NBP2-43608] - Analysis of A. 30 ug PC-12 whole cell lysate/extract B. 30 ug Rat2 whole cell lysate/extract 7.5 % SDS-PAGE COPD antibody [1318] dilution: 1:1000.



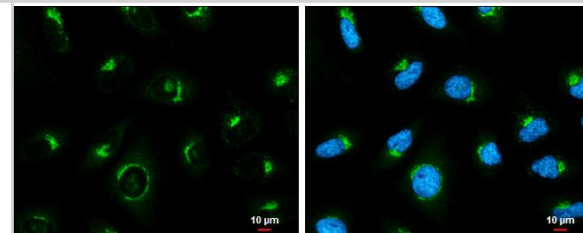
**Immunohistochemistry-Paraffin:** Coatomer Subunit Delta Antibody (1318) [NBP2-43608] - Coatomer Subunit Delta Antibody (1318) detects Coatomer Subunit Delta protein at cytoplasm by immunohistochemical analysis. Sample: Paraffin-embedded rat urinary bladder. Coatomer Subunit Delta stained by Coatomer Subunit Delta Antibody (1318) diluted at 1:200. Antigen Retrieval: Citrate buffer, pH 6.0, 15 min.



**Immunohistochemistry-Frozen:** Coatomer Subunit Delta Antibody (1318) [NBP2-43608] - Coatomer Subunit Delta Antibody (1318) detects Coatomer Subunit Delta protein by immunohistochemical analysis. Sample: Frozen-sectioned mouse cerebellum. Green: Coatomer Subunit Delta stained by Coatomer Subunit Delta Antibody (1318) diluted at 1:250. Red: Calbindin, stained by Calbindin antibody diluted at 1:500. Blue: Fluoroshield with DAPI. Antigen Retrieval: Citrate buffer, pH 6.0, 10 min.



**Immunocytochemistry/ Immunofluorescence:** Coatomer Subunit Delta Antibody (1318) [NBP2-43608] - Coatomer Subunit Delta antibody [GT1318] detects Coatomer Subunit Delta protein at Golgi apparatus by immunofluorescent analysis. Sample: HeLa cells were fixed in 4% paraformaldehyde at RT for 15 min. Green: Coatomer Subunit Delta stained by Coatomer Subunit Delta antibody [GT1318] (NBP2-43608) diluted at 1:500. Blue: Hoechst 33342 staining. Scale bar= 10um.





### **Novus Biologicals USA**

10730 E. Briarwood Avenue  
Centennial, CO 80112  
USA  
Phone: 303.730.1950  
Toll Free: 1.888.506.6887  
Fax: 303.730.1966  
nb-customerservice@bio-techne.com

### **Bio-Techne Canada**

21 Canmotor Ave  
Toronto, ON M8Z 4E6  
Canada  
Phone: 905.827.6400  
Toll Free: 855.668.8722  
Fax: 905.827.6402  
canada.inquires@bio-techne.com

### **Bio-Techne Ltd**

19 Barton Lane  
Abingdon Science Park  
Abingdon, OX14 3NB, United Kingdom  
Phone: (44) (0) 1235 529449  
Free Phone: 0800 37 34 15  
Fax: (44) (0) 1235 533420  
info.EMEA@bio-techne.com

### **General Contact Information**

www.novusbio.com  
Technical Support: nb-technical@bio-techne.com  
Orders: nb-customerservice@bio-techne.com  
General: novus@novusbio.com

### **Products Related to NBP2-43608**

---

NBP2-33376H	Blue Marker Antibody (6F4-F6) [HRP]
HAF007	Goat anti-Mouse IgG Secondary Antibody [HRP]
NB7539	Goat anti-Mouse IgG (H+L) Secondary Antibody [HRP]
NBP1-97005-0.5mg	Mouse IgG1 Isotype Control (MG1)

---

### **Limitations**

This product is for research use only and is not approved for use in humans or in clinical diagnosis. Primary Antibodies are guaranteed for 1 year from date of receipt.

For more information on our 100% guarantee, please visit [www.novusbio.com/guarantee](http://www.novusbio.com/guarantee)

Earn gift cards/discounts by submitting a review: [www.novusbio.com/reviews/submit/NBP2-43608](http://www.novusbio.com/reviews/submit/NBP2-43608)

Earn gift cards/discounts by submitting a publication using this product:  
[www.novusbio.com/publications](http://www.novusbio.com/publications)

