

Product Datasheet

HIST1H3A [ac Lys18] Antibody NBP2-43535

Unit Size: 0.1 ml

Aliquot and store at -20C or -80C. Avoid freeze-thaw cycles.

www.novusbio.com



technical@novusbio.com

Publications: 1

Protocols, Publications, Related Products, Reviews, Research Tools and Images at:
www.novusbio.com/NBP2-43535

Updated 9/25/2025 v.20.1

Earn rewards for product
reviews and publications.

Submit a publication at www.novusbio.com/publications

Submit a review at www.novusbio.com/reviews/destination/NBP2-43535



NBP2-43535**HIST1H3A [ac Lys18] Antibody**

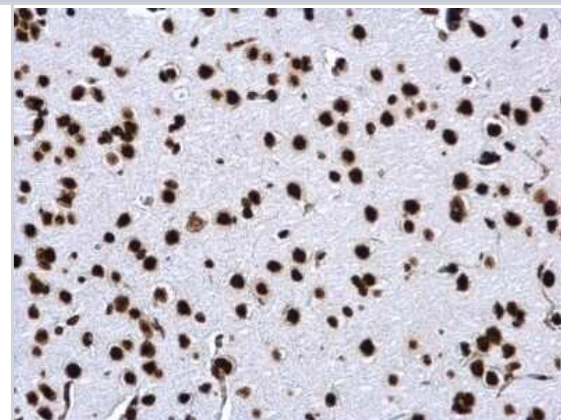
Product Information	
Unit Size	0.1 ml
Concentration	Concentrations vary lot to lot. See vial label for concentration. If unlisted please contact technical services.
Storage	Aliquot and store at -20C or -80C. Avoid freeze-thaw cycles.
Clonality	Polyclonal
Preservative	0.025% Proclin 300
Isotype	IgG
Purity	Antigen Affinity-purified
Buffer	PBS, 1% BSA, 20% Glycerol

Product Description	
Description	Novus Biologicals Rabbit HIST1H3A [ac Lys18] Antibody (NBP2-43535) is a polyclonal antibody validated for use in IHC, WB, ICC/IF, IP and ChIP. Anti-HIST1H3A Antibody: Cited in 1 publication. All Novus Biologicals antibodies are covered by our 100% guarantee.
Host	Rabbit
Gene ID	8350
Gene Symbol	H3C1
Species	Human, Mouse, Rat
Immunogen	Carrier-protein conjugated synthetic peptide surrounding acetyl Lys18 of human HIST1H3A. The exact sequence is proprietary.

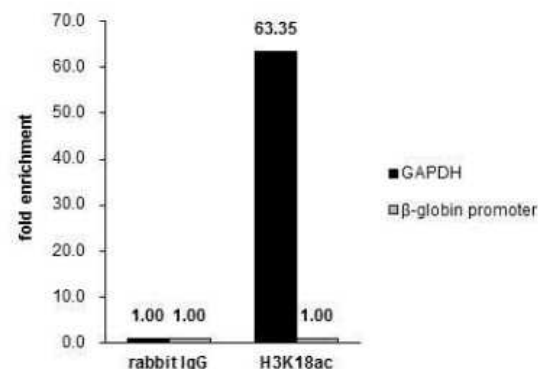
Product Application Details	
Applications	Western Blot, Immunohistochemistry-Paraffin, Dot Blot, Immunocytochemistry/Immunofluorescence, Immunohistochemistry, Immunoprecipitation, Chromatin Immunoprecipitation (ChIP)
Recommended Dilutions	Western Blot 1:1000-1:10000, Immunohistochemistry, Immunocytochemistry/Immunofluorescence 1:100-1:1000, Immunoprecipitation 1:100-1:500, Immunohistochemistry-Paraffin 1:100-1:1000, Dot Blot, Chromatin Immunoprecipitation (ChIP)
Application Notes	Dot Blot, Chip assay- Assay dependent

Images

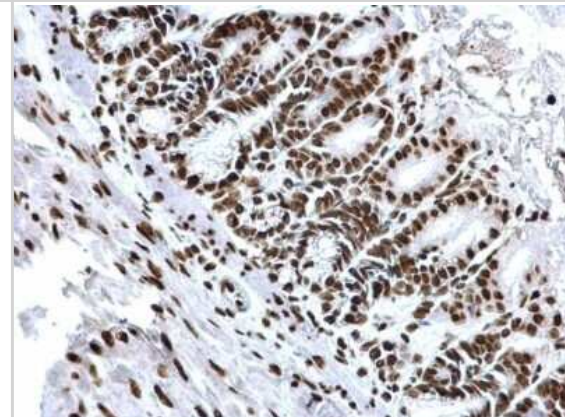
Immunohistochemistry-Paraffin: HIST1H3A [ac Lys18] Antibody [NBP2-43535] - Analysis of rat fore brain. Histone H3K18ac (acetyl Lys18) antibody dilution: 1:500.



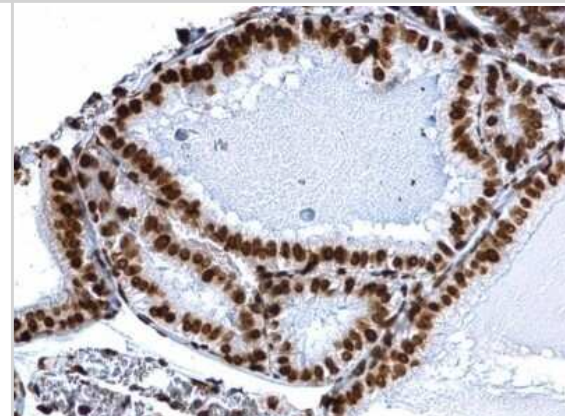
Chromatin Immunoprecipitation: HIST1H3A [ac Lys18] Antibody [NBP2-43535] - Cross-linked CHIP was performed with HeLa chromatin extract treated with Trichostatin A (0.4 μ M for 18 h) and 5 μ g of either control rabbit IgG or anti-Histone H3K18ac (acetyl Lys18) antibody. The precipitated DNA was detected by PCR with primer set targeting to GAPDH or beta-globin promoter.



Immunohistochemistry-Paraffin: HIST1H3A [ac Lys18] Antibody [NBP2-43535] - Analysis of mouse duodenum. Histone H3K18ac (acetyl Lys18) antibody dilution: 1:500.



Immunohistochemistry-Paraffin: HIST1H3A [ac Lys18] Antibody [NBP2-43535] - Analysis of mouse prostate. Histone H3K18ac (acetyl Lys18) antibody dilution: 1:500.

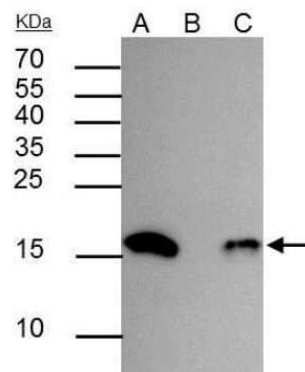


Immunoprecipitation: HIST1H3A [ac Lys18] Antibody [NBP2-43535] - Analysis of HeLa whole cell lysate/extract:

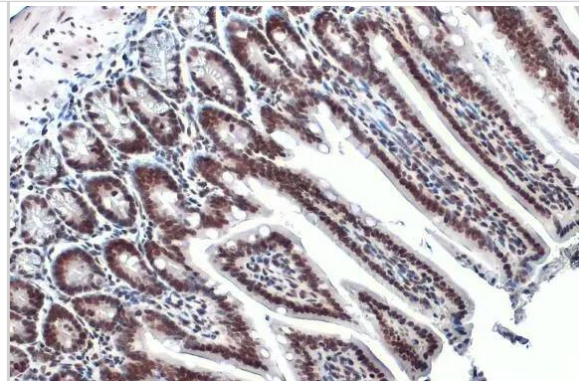
A. 30 μ g whole cell lysate/extract of Histone H3 (acetyl Lys18) protein expressing HeLa cells (0.4 μ M TSA treatment for 18hr)

B. Control with 2.5 μ g of pre-immune rabbit IgG C : Immunoprecipitation of Histone H3 (acetyl Lys18) protein by 2.5 μ g of Histone H3 (acetyl Lys18) antibody 12% SDS-PAGE

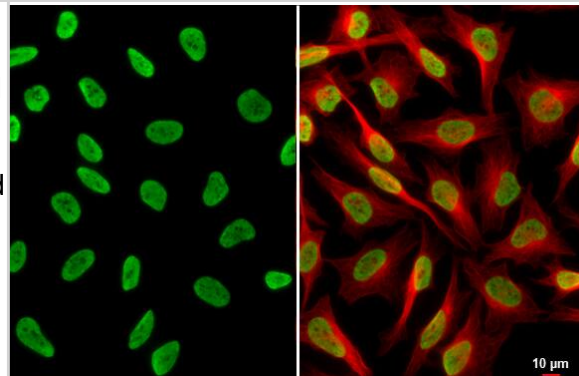
The immunoprecipitated Histone H3 protein (acetyl Lys18) was detected by Histone H3 (acetyl Lys18) antibody. EasyBlot anti-rabbit IgG (HRP) was used as a secondary reagent.



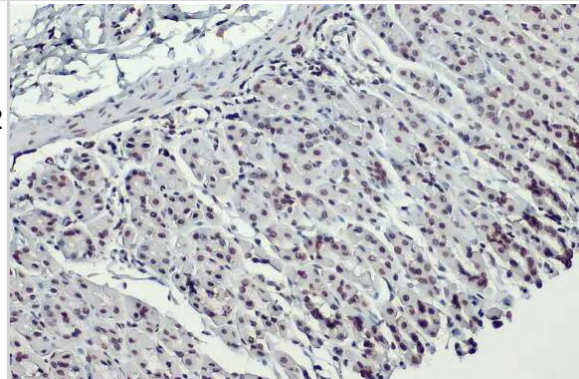
Immunohistochemistry-Paraffin: HIST1H3A [ac Lys18] Antibody [NBP2-43535] - HIST1H3A antibody detects HIST1H3A protein at nucleus by immunohistochemical analysis. Sample: Paraffin-embedded mouse colon. HIST1H3A stained by HIST1H3A antibody (NBP2-43535) diluted at 1:500. Antigen Retrieval: Citrate buffer, pH 6.0, 15 min



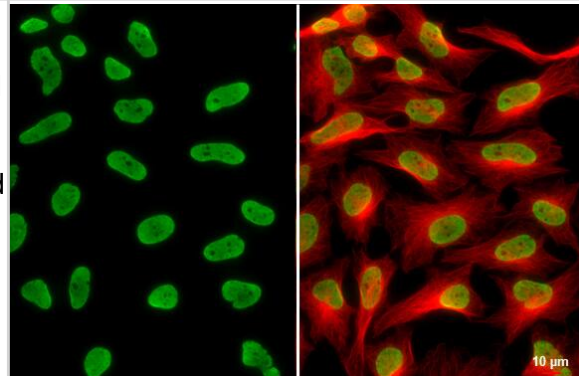
Immunocytochemistry/ Immunofluorescence: HIST1H3A [ac Lys18] Antibody [NBP2-43535] - HIST1H3A antibody detects HIST1H3A protein at nucleus by immunofluorescent analysis. Sample: HeLa cells were fixed in 4% paraformaldehyde at RT for 15 min. Green: HIST1H3A stained by HIST1H3A antibody (NBP2-43535) diluted at 1:500. Red: alpha Tubulin, a cytoskeleton marker, stained by alpha Tubulin antibody [GT114] diluted at 1:1000. Scale bar= 10um.



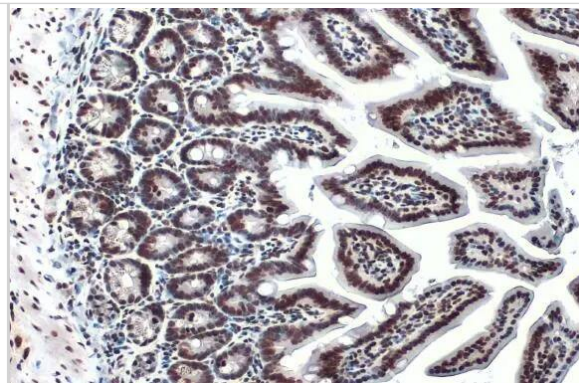
Immunohistochemistry-Paraffin: HIST1H3A [ac Lys18] Antibody [NBP2-43535] - HIST1H3A antibody detects Histone H3K18ac protein at nucleus by immunohistochemical analysis. Sample: Paraffin-embedded mouse stomach. Histone H3K18ac stained by HIST1H3A antibody (NBP2-43535) diluted at 1:500. Antigen Retrieval: Citrate buffer, pH 6.0, 15 min



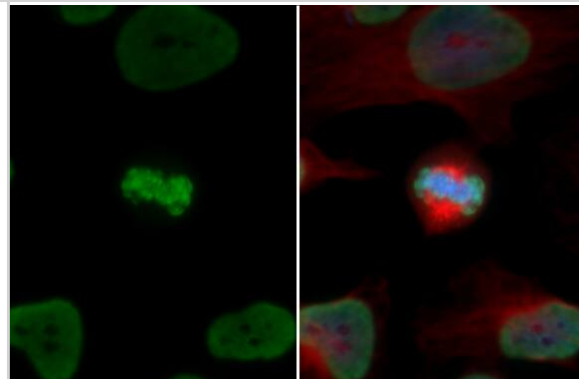
Immunocytochemistry/ Immunofluorescence: HIST1H3A [ac Lys18] Antibody [NBP2-43535] - HIST1H3A antibody detects HIST1H3A protein at nucleus by immunofluorescent analysis. Sample: HeLa cells were fixed in 4% paraformaldehyde at RT for 15 min. Green: HIST1H3A stained by HIST1H3A antibody (NBP2-43535) diluted at 1:500. Red: alpha Tubulin, a cytoskeleton marker, stained by alpha Tubulin antibody [GT114] diluted at 1:1000. Scale bar= 10um.



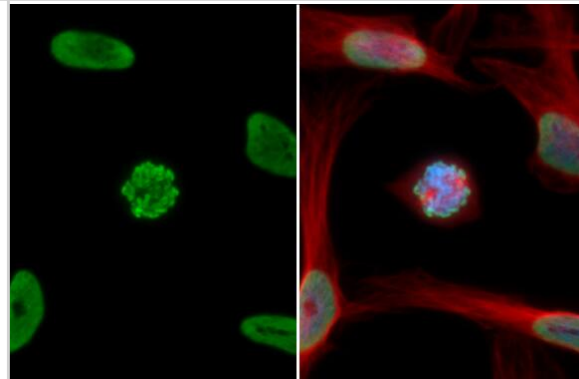
Immunohistochemistry-Paraffin: HIST1H3A [ac Lys18] Antibody [NBP2-43535] - HIST1H3A antibody detects HIST1H3A protein at nucleus by immunohistochemical analysis. Sample: Paraffin-embedded mouse colon. HIST1H3A stained by HIST1H3A antibody (NBP2-43535) diluted at 1:500. Antigen Retrieval: Citrate buffer, pH 6.0, 15 min



Immunocytochemistry/ Immunofluorescence: HIST1H3A [ac Lys18] Antibody [NBP2-43535] - HIST1H3A antibody detects HIST1H3A protein at chromosome by immunofluorescent analysis. Sample: HeLa cells were fixed in 4% paraformaldehyde at RT for 15 min. Green: HIST1H3A stained by HIST1H3A antibody (NBP2-43535) diluted at 1:500. Red: alpha Tubulin, a cytoskeleton marker, stained by alpha Tubulin antibody [GT114] diluted at 1:1000. Blue: Fluoroshield with DAPI .



Immunocytochemistry/ Immunofluorescence: HIST1H3A [ac Lys18] Antibody [NBP2-43535] - HIST1H3A antibody detects HIST1H3A protein at chromosome by immunofluorescent analysis. Sample: HeLa cells were fixed in 4% paraformaldehyde at RT for 15 min. Green: HIST1H3A stained by HIST1H3A antibody (NBP2-43535) diluted at 1:500. Red: alpha Tubulin, a cytoskeleton marker, stained by alpha Tubulin antibody [GT114] diluted at 1:1000. Blue: Fluoroshield with DAPI .



Dotblot analysis of anti-Histone H3 (acetyl Lys18) antibody with peptide samples.

Varied amount of peptide samples were spotted onto positively charged nylon membrane and blotted with Histone H3 (acetyl Lys18) antibody (NBP2-43535) 1:5000 dilution.

- A: Peptide samples of H3K18 un
- B: Peptide samples of H3K18ac
- C: Peptide samples of H3K9un
- D: Peptide samples of H3K9ac
- E: Peptide samples of H3K14un
- F: Peptide samples of H3K14ac
- G: Peptide samples of H3K27un
- H: Peptide samples of H3K27ac



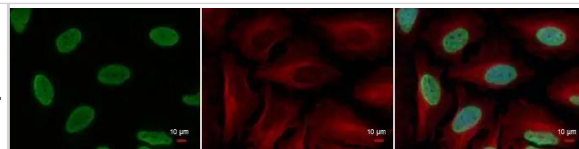
Histone H3 (acetyl Lys18) antibody detects Histone H3 (acetyl Lys18) protein at nucleus by immunofluorescent analysis.

Sample: HeLa cells were fixed in 4% paraformaldehyde at RT for 15 min.

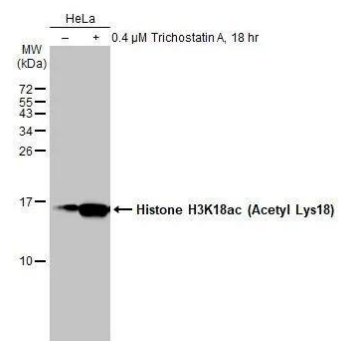
Green: Histone H3 (acetyl Lys18) protein stained by Histone H3 (acetyl Lys18) antibody (NBP2-43535) diluted at 1:500.

Red: alpha Tubulin antibody [GT114], a cytoskeleton marker, stained by diluted at 1:500.

Blue: Hoechst 33342 staining.



Untreated (-) and treated (+) HeLa whole cell extracts (30 ug) were separated by 15% SDS-PAGE, and the membrane was blotted with Histone H3K18ac (Acetyl Lys18) antibody (NBP2-43535) diluted at 1:5000. The HRP-conjugated anti-rabbit IgG antibody was used to detect the primary antibody.



Publications

He X, Zhong X, Fang Y et al. AF9 sustains glycolysis in colorectal cancer via H3K9ac-mediated PCK2 and FBP1 transcription *Clinical and Translational Medicine* 2023-08-10 [PMID: 37565737]



Novus Biologicals USA

10730 E. Briarwood Avenue
Centennial, CO 80112
USA
Phone: 303.730.1950
Toll Free: 1.888.506.6887
Fax: 303.730.1966
nb-customerservice@bio-techne.com

Bio-Techne Canada

21 Canmotor Ave
Toronto, ON M8Z 4E6
Canada
Phone: 905.827.6400
Toll Free: 855.668.8722
Fax: 905.827.6402
canada.inquires@bio-techne.com

Bio-Techne Ltd

19 Barton Lane
Abingdon Science Park
Abingdon, OX14 3NB, United Kingdom
Phone: (44) (0) 1235 529449
Free Phone: 0800 37 34 15
Fax: (44) (0) 1235 533420
info.EMEA@bio-techne.com

General Contact Information

www.novusbio.com
Technical Support: nb-technical@bio-techne.com
Orders: nb-customerservice@bio-techne.com
General: novus@novusbio.com

Products Related to NBP2-43535

NBP2-33376H	Blue Marker Antibody (6F4-F6) [HRP]
HAF008	Goat anti-Rabbit IgG Secondary Antibody [HRP]
NB7160	Goat anti-Rabbit IgG (H+L) Secondary Antibody [HRP]
NBP2-24891	Rabbit IgG Isotype Control

Limitations

This product is for research use only and is not approved for use in humans or in clinical diagnosis. Primary Antibodies are guaranteed for 1 year from date of receipt.

For more information on our 100% guarantee, please visit www.novusbio.com/guarantee

Earn gift cards/discounts by submitting a review: www.novusbio.com/reviews/submit/NBP2-43535

Earn gift cards/discounts by submitting a publication using this product:
www.novusbio.com/publications

