

Product Datasheet

Laminin alpha 5 Antibody (CL3118) - BSA Free NBP2-42391

Unit Size: 0.1 ml

Store at 4C short term. Aliquot and store at -20C long term. Avoid freeze-thaw cycles.

www.novusbio.com



technical@novusbio.com

Publications: 7

Protocols, Publications, Related Products, Reviews, Research Tools and Images at:
www.novusbio.com/NBP2-42391

Updated 12/2/2025 v.20.1

Earn rewards for product
reviews and publications.

Submit a publication at www.novusbio.com/publications

Submit a review at www.novusbio.com/reviews/destination/NBP2-42391



NBP2-42391

Laminin alpha 5 Antibody (CL3118) - BSA Free

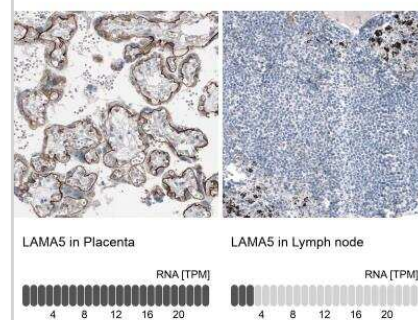
Product Information	
Unit Size	0.1 ml
Concentration	Concentrations vary lot to lot. See vial label for concentration. If unlisted please contact technical services.
Storage	Store at 4C short term. Aliquot and store at -20C long term. Avoid freeze-thaw cycles.
Clonality	Monoclonal
Clone	CL3118
Preservative	0.02% Sodium Azide
Isotype	IgG1
Purity	Protein A purified
Buffer	PBS (pH 7.2) and 40% Glycerol

Product Description	
Description	Novus Biologicals Mouse Laminin alpha 5 Antibody (CL3118) - BSA Free (NBP2-42391) is a monoclonal antibody validated for use in IHC and WB. Anti-Laminin alpha 5 Antibody: Cited in 4 publications. All Novus Biologicals antibodies are covered by our 100% guarantee.
Host	Mouse
Gene ID	3911
Gene Symbol	LAMA5
Species	Human, Rat
Reactivity Notes	Use in Rat reported in scientific literature (PMID:32157808).
Immunogen	This antibody was developed using a recombinant protein derived from O15230, with the exact immunogen sequence remaining proprietary.

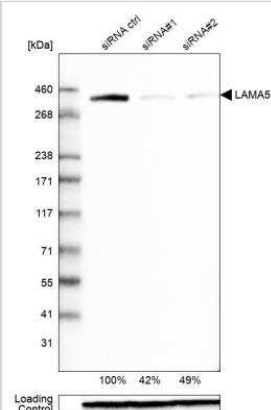
Product Application Details	
Applications	Western Blot, Immunohistochemistry-Paraffin, Immunohistochemistry, Knockdown Validated
Recommended Dilutions	Western Blot 1 ug/ml, Immunohistochemistry 1:200 - 1:500, Immunohistochemistry-Paraffin 1:200-1:500, Knockdown Validated
Application Notes	For IHC-Paraffin, HIER pH 6 retrieval is recommended.

Images

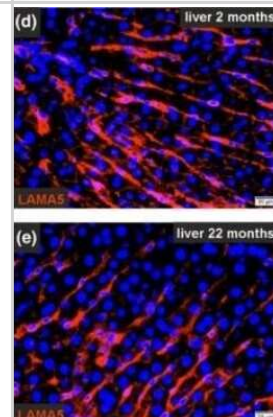
Immunohistochemistry-Paraffin: Laminin alpha 5 Antibody (CL3118) [NBP2-42391] - Staining in human placenta and lymph node tissues. Corresponding LAMA5 RNA-seq data are presented for the same tissues.



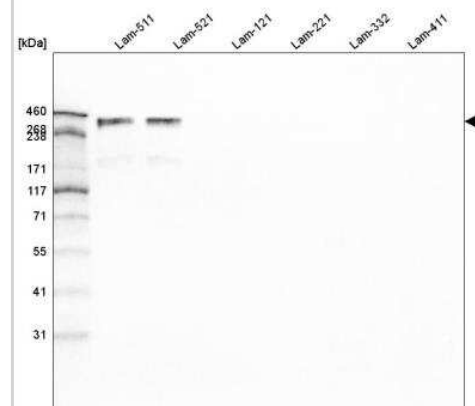
Western Blot: Laminin alpha 5 Antibody (CL3118) [NBP2-42391] - Analysis in Caco-2 cells transfected with control siRNA, target specific siRNA probe #1 and #2, using Anti-LAMA5 antibody. Remaining relative intensity is presented. Loading control: Anti-GAPDH.



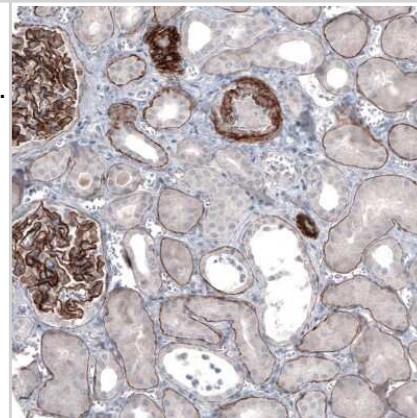
Laminin-alpha-5-Antibody-CL3118-Immunohistochemistry-NBP2-42391-
img0028.jpg



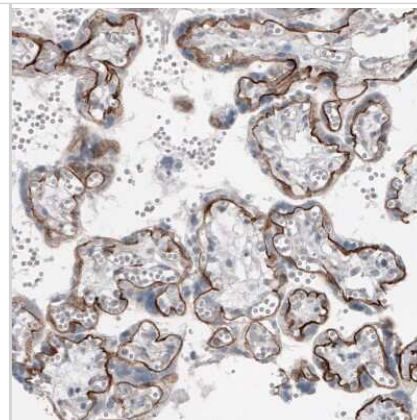
Western Blot: Laminin alpha 5 Antibody (CL3118) [NBP2-42391] - Analysis of purified human recombinant Laminin-511, Laminin-521, Laminin-121, Laminin-221, Laminin-332 and Laminin-411.



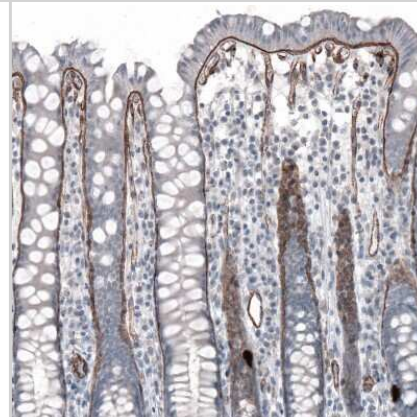
Immunohistochemistry-Paraffin: Laminin alpha 5 Antibody (CL3118) [NBP2-42391] - Staining of human kidney shows strong membranous positivity in glomeruli, as well as in basement membrane of renal tubules.



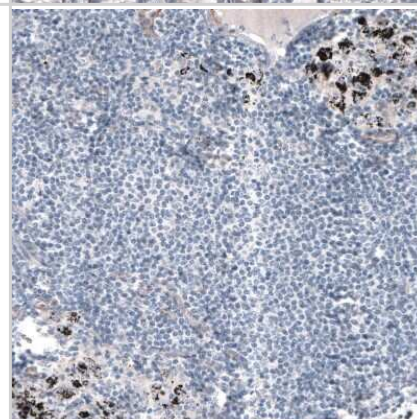
Immunohistochemistry-Paraffin: Laminin alpha 5 Antibody (CL3118) [NBP2-42391] - Staining of human placenta shows moderate positivity in basement membrane of trophoblastic cells.



Immunohistochemistry-Paraffin: Laminin alpha 5 Antibody (CL3118) [NBP2-42391] - Staining of human colon shows moderate positivity in basement membrane of glandular cells.

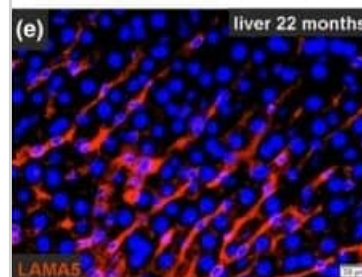
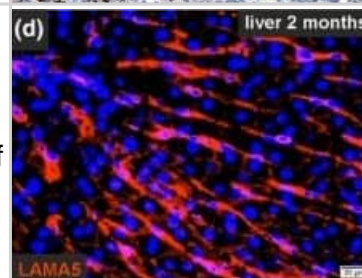


Immunohistochemistry-Paraffin: Laminin alpha 5 Antibody (CL3118) [NBP2-42391] - Staining of human lymph node shows no positivity in lymphoid cells as expected.



Altered ECM protein gene expression in liver tissue during aging. (a) Hierarchical cluster analysis of differentially expressed genes in whole liver tissue from 2-month-old and 22-month-old rats. (b) Scatter plot of gene expression of whole liver tissue from both age groups ($n = 3$ per age group, fold change > 2 , $p < .05$, ANOVA). (c) Expression analyses of genes encoding for ECM proteins by qPCR. Mean expression of liver tissue samples from young rats was set to 100% ($n = 8-10$ for 2-month-old and $n = 8-9$ for 22-month-old rats, $*p < .05$).

Immunofluorescence analysis of liver tissue sections from 2-month-old and 22-month-old rats ($n = 3$) with antibodies against (d, e) LAMA5, (f, g) COL1, and (h, i) COL4 (red). Cell nuclei were stained with DAPI (blue; scale bars: 20 μm). (j) Proteome analysis of decellularized rat liver tissue. Mean intensities of samples from young rats were set to 100% ($n = 3$, $*p < .05$). (c, j) Data are presented as means \pm SEM. Image collected and cropped by CiteAb from the following open publication (<https://pubmed.ncbi.nlm.nih.gov/32157808>), licensed under a CC-BY license. Not internally tested by Novus Biologicals.



Publications

Hank T, Li A, Bolm L et al. Collagen XVII Promotes Pancreatic Ductal Adenocarcinoma Tumor Growth through Regulation of PIK3R5 Cancer Research Communications 2025-08-01 [PMID: 40728119]

Hsieh, LT;Hall, BS;Newcombe, J;Mendum, TA;Varela, SS;Umrana, Y;Deery, MJ;Shi, WQ;Diaz-Delgado, J;Salguero, FJ;Simmonds, RE; The Mycobacterium ulcerans toxin mycolactone causes destructive Sec61-dependent loss of the endothelial glycocalyx and vessel basement membrane to drive skin necrosis eLife 2025-02-06 [PMID: 39913180]

Martha Lilia T, Laura Chavez M, Erick G et al. Expression of Collagen VI, Anticollagenase, Laminin, MM9, Claudins 1 and 5, N and E Cadherins in Choroid Plexus Tumors Archives of Pathology and Clinical Research 2023-10-25

Altera A, Tosi GM, Regoli M et al. The extracellular matrix complexity of idiopathic epiretinal membranes and the bilaminar arrangement of the associated internal limiting membrane in the posterior retina Graefe's archive for clinical and experimental ophthalmology = Albrecht von Graefes Archiv fur klinische und experimentelle Ophthalmologie 2021-03-24 [PMID: 33760980]

Rohn F, Kordes C, Buschmann T et Al. Impaired integrin alpha 5 /beta 1 -mediated hepatocyte growth factor release by stellate cells of the aged liver Aging Cell 2020-03-11 [PMID: 32157808] (IHC-F, IF/IHC, Rat)

Liu P, Chen H, Yan L, Sun Y Laminin alpha 5 modulates fibroblast proliferation in epidural fibrosis through the PI3K/AKT/mTOR signaling pathway Mol Med Report 2020-01-28 [PMID: 32016453] (IHC-P)

Gordon-Weeks A, Lim SY, Yuzhalin A et al. Tumour-Derived Laminin alpha 5 (LAMA5) Promotes Colorectal Liver Metastasis Growth, Branching Angiogenesis and Notch Pathway Inhibition Cancers (Basel) 2019-05-06 [PMID: 31064120] (WB, Human)





Novus Biologicals USA

10730 E. Briarwood Avenue
Centennial, CO 80112
USA
Phone: 303.730.1950
Toll Free: 1.888.506.6887
Fax: 303.730.1966
nb-customerservice@bio-techne.com

Bio-Techne Canada

21 Canmotor Ave
Toronto, ON M8Z 4E6
Canada
Phone: 905.827.6400
Toll Free: 855.668.8722
Fax: 905.827.6402
canada.inquires@bio-techne.com

Bio-Techne Ltd

19 Barton Lane
Abingdon Science Park
Abingdon, OX14 3NB, United Kingdom
Phone: (44) (0) 1235 529449
Free Phone: 0800 37 34 15
Fax: (44) (0) 1235 533420
info.EMEA@bio-techne.com

General Contact Information

www.novusbio.com
Technical Support: nb-technical@bio-techne.com
Orders: nb-customerservice@bio-techne.com
General: novus@novusbio.com

Products Related to NBP2-42391

NBP2-33376H	Blue Marker Antibody (6F4-F6) [HRP]
HAF007	Goat anti-Mouse IgG Secondary Antibody [HRP]
NB7539	Goat anti-Mouse IgG (H+L) Secondary Antibody [HRP]
NBP1-97005-0.5mg	Mouse IgG1 Isotype Control (MG1)

Limitations

This product is for research use only and is not approved for use in humans or in clinical diagnosis. Primary Antibodies are guaranteed for 1 year from date of receipt.

For more information on our 100% guarantee, please visit www.novusbio.com/guarantee

Earn gift cards/discounts by submitting a review: www.novusbio.com/reviews/submit/NBP2-42391

Earn gift cards/discounts by submitting a publication using this product:
www.novusbio.com/publications

