

Product Datasheet

Laminin S/Laminin beta 2 Antibody (CL2976) - BSA Free NBP2-42386

Unit Size: 0.1 ml

Store at 4C short term. Aliquot and store at -20C long term. Avoid freeze-thaw cycles.

www.novusbio.com



technical@novusbio.com

Protocols, Publications, Related Products, Reviews, Research Tools and Images at:
www.novusbio.com/NBP2-42386

Updated 9/9/2025 v.20.1

Earn rewards for product
reviews and publications.

Submit a publication at www.novusbio.com/publications

Submit a review at www.novusbio.com/reviews/destination/NBP2-42386



NBP2-42386

Laminin S/Laminin beta 2 Antibody (CL2976) - BSA Free

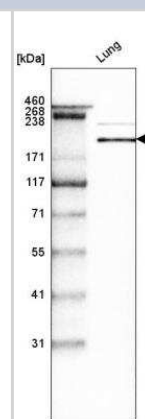
Product Information	
Unit Size	0.1 ml
Concentration	Concentrations vary lot to lot. See vial label for concentration. If unlisted please contact technical services.
Storage	Store at 4C short term. Aliquot and store at -20C long term. Avoid freeze-thaw cycles.
Clonality	Monoclonal
Clone	CL2976
Preservative	0.02% Sodium Azide
Isotype	IgG1
Purity	Protein A purified
Buffer	PBS (pH 7.2) and 40% Glycerol

Product Description	
Description	Novus Biologicals Mouse Laminin S/Laminin beta 2 Antibody (CL2976) - BSA Free (NBP2-42386) is a monoclonal antibody validated for use in IHC and WB. All Novus Biologicals antibodies are covered by our 100% guarantee.
Host	Mouse
Gene ID	3913
Gene Symbol	LAMB2
Species	Human
Reactivity Notes	Expected to cross react based on sequence identity: Mouse (83%), Rat (82%).
Immunogen	This antibody was developed using a recombinant protein derived from P55268, with the exact immunogen sequence remaining proprietary.

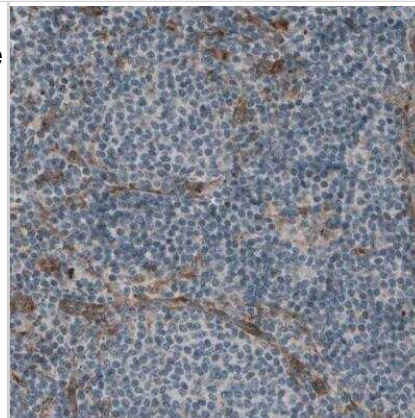
Product Application Details	
Applications	Western Blot, Immunohistochemistry-Paraffin, Immunohistochemistry, Knockdown Validated
Recommended Dilutions	Western Blot 1 ug/ml, Immunohistochemistry 1:5000 - 1:10000, Immunohistochemistry-Paraffin 1:5000-1:1000, Knockdown Validated
Application Notes	For IHC-Paraffin, HIER pH 6 retrieval is recommended.

Images

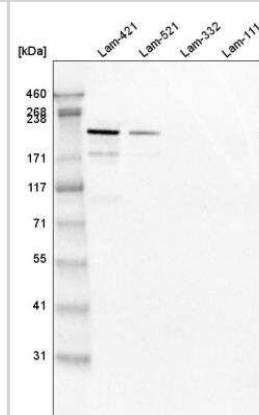
Western Blot: Laminin S/Laminin beta 2 Antibody (CL2976) [NBP2-42386] - Analysis in human lung tissue.



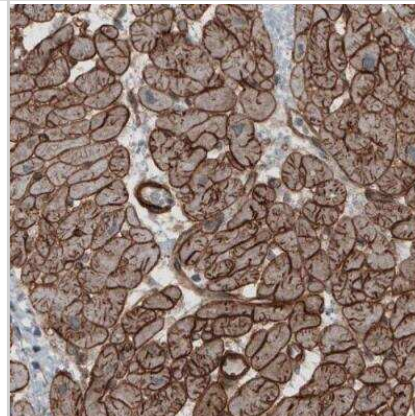
Immunohistochemistry-Paraffin: Laminin S/Laminin beta 2 Antibody (CL2976) [NBP2-42386] - Staining of human lymph node shows absence of immunoreactivity in lymphoid cells (negative control).



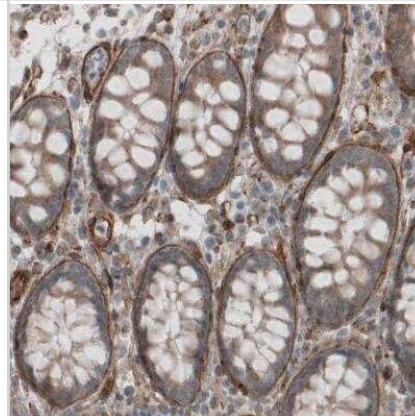
Western Blot: Laminin S/Laminin beta 2 Antibody (CL2976) [NBP2-42386] - Analysis of purified human recombinant Laminin-421, Laminin-521, Laminin-332 and Laminin-111.



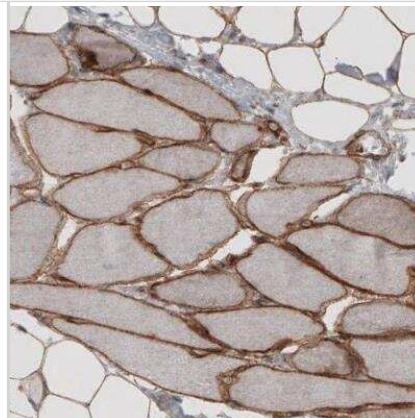
Immunohistochemistry-Paraffin: Laminin S/Laminin beta 2 Antibody (CL2976) [NBP2-42386] - Staining of human heart shows strong membranous immunoreactivity in cardiomyocytes.



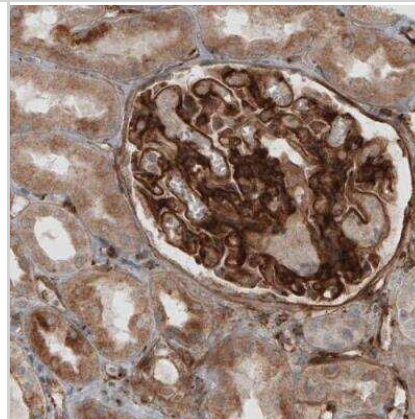
Immunohistochemistry-Paraffin: Laminin S/Laminin beta 2 Antibody (CL2976) [NBP2-42386] - Staining of human colon shows strong positivity in basement membrane of glandular epithelium.



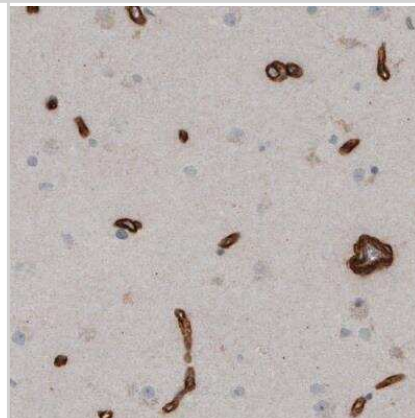
Immunohistochemistry-Paraffin: Laminin S/Laminin beta 2 Antibody (CL2976) [NBP2-42386] - Staining of human skeletal muscle shows strong membranous immunoreactivity in myocytes.



Immunohistochemistry-Paraffin: Laminin S/Laminin beta 2 Antibody (CL2976) [NBP2-42386] - Staining of human kidney shows strong positivity in renal glomeruli.



Immunohistochemistry-Paraffin: Laminin S/Laminin beta 2 Antibody (CL2976) [NBP2-42386] - Staining of human cortex shows strong immunoreactivity in endothelial cells.





Novus Biologicals USA

10730 E. Briarwood Avenue
Centennial, CO 80112
USA
Phone: 303.730.1950
Toll Free: 1.888.506.6887
Fax: 303.730.1966
nb-customerservice@bio-techne.com

Bio-Techne Canada

21 Canmotor Ave
Toronto, ON M8Z 4E6
Canada
Phone: 905.827.6400
Toll Free: 855.668.8722
Fax: 905.827.6402
canada.inquires@bio-techne.com

Bio-Techne Ltd

19 Barton Lane
Abingdon Science Park
Abingdon, OX14 3NB, United Kingdom
Phone: (44) (0) 1235 529449
Free Phone: 0800 37 34 15
Fax: (44) (0) 1235 533420
info.EMEA@bio-techne.com

General Contact Information

www.novusbio.com
Technical Support: nb-technical@bio-techne.com
Orders: nb-customerservice@bio-techne.com
General: novus@novusbio.com

Products Related to NBP2-42386

NBP2-42386PEP	Laminin S/Laminin beta 2 Recombinant Protein Antigen
NBP2-33376H	Blue Marker Antibody (6F4-F6) [HRP]
HAF007	Goat anti-Mouse IgG Secondary Antibody [HRP]
NB7539	Goat anti-Mouse IgG (H+L) Secondary Antibody [HRP]
NBP1-97005-0.5mg	Mouse IgG1 Isotype Control (MG1)

Limitations

This product is for research use only and is not approved for use in humans or in clinical diagnosis. Primary Antibodies are guaranteed for 1 year from date of receipt.

For more information on our 100% guarantee, please visit www.novusbio.com/guarantee

Earn gift cards/discounts by submitting a review: www.novusbio.com/reviews/submit/NBP2-42386

Earn gift cards/discounts by submitting a publication using this product:
www.novusbio.com/publications

