

Product Datasheet

Lgi1 Antibody (S283-7) - BSA Free NBP2-42190

Unit Size: 0.1 mg

Store at 4C short term. Aliquot and store at -20C long term. Avoid freeze-thaw cycles.

www.novusbio.com



technical@novusbio.com

Protocols, Publications, Related Products, Reviews, Research Tools and Images at:
www.novusbio.com/NBP2-42190

Updated 9/9/2025 v.20.1

Earn rewards for product
reviews and publications.

Submit a publication at www.novusbio.com/publications

Submit a review at www.novusbio.com/reviews/destination/NBP2-42190



NBP2-42190

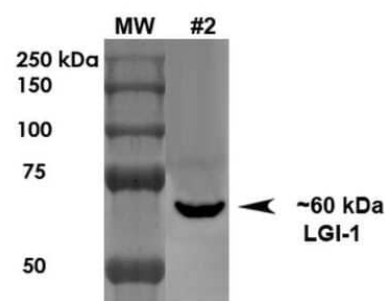
Lgi1 Antibody (S283-7) - BSA Free

| Product Information | |
|-----------------------------|---|
| Unit Size | 0.1 mg |
| Concentration | 1 mg/ml |
| Storage | Store at 4C short term. Aliquot and store at -20C long term. Avoid freeze-thaw cycles. |
| Clonality | Monoclonal |
| Clone | S283-7 |
| Preservative | 0.1% Sodium Azide |
| Isotype | IgG2a |
| Purity | Protein G purified |
| Buffer | PBS (pH 7.4), 50% Glycerol |
| Product Description | |
| Description | Novus Biologicals Mouse Lgi1 Antibody (S283-7) - BSA Free (NBP2-42190) is a monoclonal antibody validated for use in IHC, WB and ICC/IF. All Novus Biologicals antibodies are covered by our 100% guarantee. |
| Host | Mouse |
| Gene ID | 9211 |
| Gene Symbol | LGI1 |
| Species | Human, Mouse, Rat |
| Reactivity Notes | Immunogen displays sequence identity for non-tested species: Human and Rat. |
| Specificity/Sensitivity | approx 50% identity with LGI2, LGI3 and LGI4. Detects approx 60kDa. |
| Immunogen | Fusion protein amino acids 37-113 (LRRNT domain and first LRR repeat) of mouse LGI1. Rat: 100% identity (77/77 amino acids identical). Human: 98% identity (76/77 amino acids identical). ~50% identity with LGI2, LGI3 and LGI4. |
| Product Application Details | |
| Applications | Western Blot, Immunocytochemistry/ Immunofluorescence, Immunohistochemistry |
| Recommended Dilutions | Western Blot 1:1000, Immunohistochemistry, Immunocytochemistry/ Immunofluorescence |
| Application Notes | 1 ug/ml of LGI1 Antibody was sufficient for detection of LGI1 in 20 ug of rat brain lysate by colorimetric immunoblot analysis using Goat anti-mouse IgG:HRP as the secondary Antibody. |

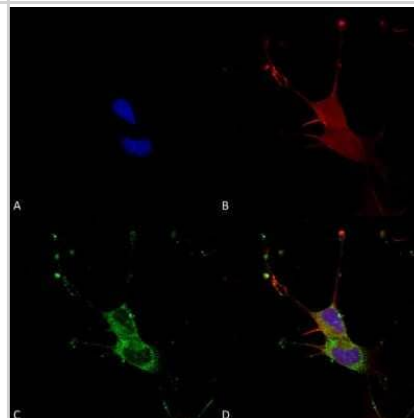


Images

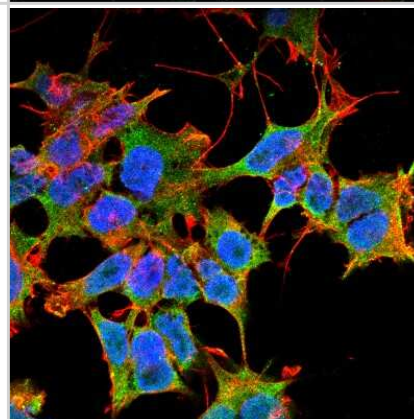
Western Blot: Lgi1 Antibody (S283-7) [NBP2-42190] - Western Blot analysis of Rat Brain Membrane showing detection of ~60 kDa Lgi1 protein using Mouse Anti-Lgi1 Monoclonal Antibody, Clone S283-7 (NBP2-42190). Load: 10 ug. Primary Antibody: Mouse Anti-Lgi1 Monoclonal Antibody (NBP2-42190) at 1:1000 for 1 hour at RT. Secondary Antibody: Goat Anti-Mouse HRP at 1:200 for 1 hour at RT. Predicted/Observed Size: ~60 kDa.



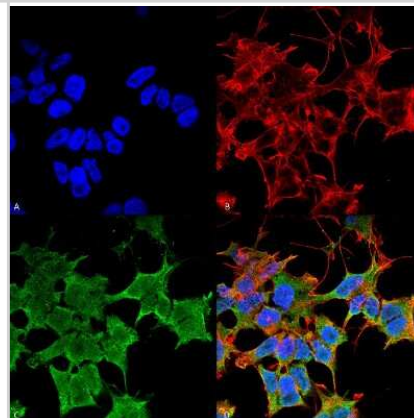
Immunocytochemistry/Immunofluorescence: Lgi1 Antibody (S283-7) [NBP2-42190] - Immunocytochemistry/Immunofluorescence analysis using Mouse Anti-Lgi1 Monoclonal Antibody, Clone S283-7 (NBP2-42190). Tissue: Neuroblastoma cells (SH-SY5Y). Species: Human. Fixation: 4% PFA for 15 min. Primary Antibody: Mouse Anti-Lgi1 Monoclonal Antibody (NBP2-42190) at 1:100 for overnight at 4C with slow rocking. Secondary Antibody: AlexaFluor 488 at 1:1000 for 1 hour at RT. Counterstain: Phalloidin-iFluor 647 (red) F-Actin stain; Hoechst (blue) nuclear stain at 1:800, 1.6mM for 20 min at RT. (A) Hoechst (blue) nuclear stain. (B) Phalloidin-iFluor 647 (red) F-Actin stain. (C) Lgi1 Antibody (D) Composite.



Immunocytochemistry/Immunofluorescence: Lgi1 Antibody (S283-7) [NBP2-42190] - Tissue: Neuroblastoma cell line SK-N-BE. Species: Human. Fixation: 4% Formaldehyde for 15 min at RT. Primary Antibody: Mouse Anti-LGI1 Monoclonal Antibody at 1:100 for 60 min at RT. Secondary Antibody: Goat Anti-Mouse ATTO 488 at 1:100 for 60 min at RT. Counterstain: Phalloidin Texas Red F-Actin stain; DAPI (blue) nuclear stain at 1:1000, 1:5000 for 60min RT, 5min RT. Localization: Cell Junction, Golgi Apparatus, Endoplasmic Reticulum. Magnification: 60X.



Immunocytochemistry/Immunofluorescence: Lgi1 Antibody (S283-7) [NBP2-42190] - Immunocytochemistry/Immunofluorescence analysis using Mouse Anti-Lgi1 Monoclonal Antibody, Clone S283-7 (NBP2-42190). Tissue: Neuroblastoma cell line (SK-N-BE). Species: Human. Fixation: 4% Formaldehyde for 15 min at RT. Primary Antibody: Mouse Anti-Lgi1 Monoclonal Antibody (NBP2-42190) at 1:100 for 60 min at RT. Secondary Antibody: Goat Anti-Mouse ATTO 488 at 1:100 for 60 min at RT. Counterstain: Phalloidin Texas Red F-Actin stain; DAPI (blue) nuclear stain at 1:1000, 1:5000 for 60min RT, 5min RT. Localization: Cell Junction, Golgi Apparatus, Endoplasmic Reticulum. Magnification: 60X. (A) DAPI (blue) nuclear stain. (B) Phalloidin Texas Red F-Actin stain. (C) Lgi1 Antibody. (D) Composite.





Novus Biologicals USA

10730 E. Briarwood Avenue
Centennial, CO 80112
USA
Phone: 303.730.1950
Toll Free: 1.888.506.6887
Fax: 303.730.1966
nb-customerservice@bio-techne.com

Bio-Techne Canada

21 Canmotor Ave
Toronto, ON M8Z 4E6
Canada
Phone: 905.827.6400
Toll Free: 855.668.8722
Fax: 905.827.6402
canada.inquires@bio-techne.com

Bio-Techne Ltd

19 Barton Lane
Abingdon Science Park
Abingdon, OX14 3NB, United Kingdom
Phone: (44) (0) 1235 529449
Free Phone: 0800 37 34 15
Fax: (44) (0) 1235 533420
info.EMEA@bio-techne.com

General Contact Information

www.novusbio.com
Technical Support: nb-technical@bio-techne.com
Orders: nb-customerservice@bio-techne.com
General: novus@novusbio.com

Products Related to NBP2-42190

| | |
|-------------|--|
| NBP2-33376H | Blue Marker Antibody (6F4-F6) [HRP] |
| HAF007 | Goat anti-Mouse IgG Secondary Antibody [HRP] |
| NB7539 | Goat anti-Mouse IgG (H+L) Secondary Antibody [HRP] |
| NBP1-96778 | Mouse IgG2a Isotype Control (M2A) |

Limitations

This product is for research use only and is not approved for use in humans or in clinical diagnosis. Primary Antibodies are guaranteed for 1 year from date of receipt.

For more information on our 100% guarantee, please visit www.novusbio.com/guarantee

Earn gift cards/discounts by submitting a review: www.novusbio.com/reviews/submit/NBP2-42190

Earn gift cards/discounts by submitting a publication using this product:
www.novusbio.com/publications

