

# Product Datasheet

## Connexin 26/GJB2 Antibody - BSA Free NBP2-41304

Unit Size: 0.1 mg

Store at 4C short term. Aliquot and store at -20C long term. Avoid freeze-thaw cycles.

[www.novusbio.com](http://www.novusbio.com)



[technical@novusbio.com](mailto:technical@novusbio.com)

### Publications: 5

Protocols, Publications, Related Products, Reviews, Research Tools and Images at:  
[www.novusbio.com/NBP2-41304](http://www.novusbio.com/NBP2-41304)

Updated 3/4/2026 v.20.1

Earn rewards for product  
reviews and publications.

Submit a publication at [www.novusbio.com/publications](http://www.novusbio.com/publications)

Submit a review at [www.novusbio.com/reviews/destination/NBP2-41304](http://www.novusbio.com/reviews/destination/NBP2-41304)



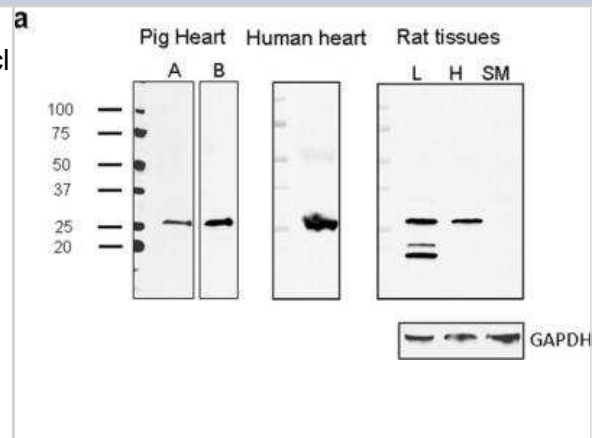
**NBP2-41304**

Connexin 26/GJB2 Antibody - BSA Free

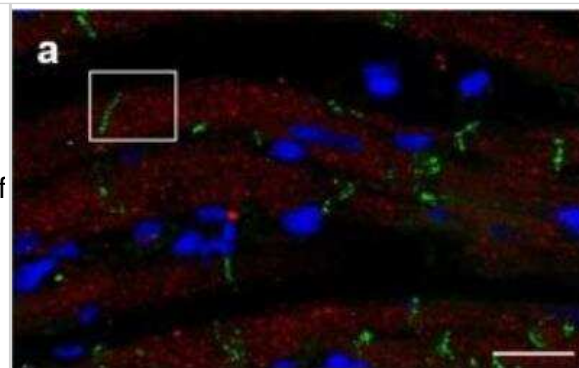
Product Information	
Unit Size	0.1 mg
Concentration	1 mg/ml
Storage	Store at 4C short term. Aliquot and store at -20C long term. Avoid freeze-thaw cycles.
Clonality	Polyclonal
Preservative	0.02% Sodium Azide
Isotype	IgG
Purity	Peptide affinity purified
Buffer	PBS
Target Molecular Weight	26 kDa
Product Description	
Host	Rabbit
Gene ID	2706
Gene Symbol	GJB2
Species	Human, Rat, Porcine
Reactivity Notes	Predicted species reactivity based on immunogen sequence: Sheep: (88%), Bovine: (88%), Chicken: (82%)
Immunogen	Antibody was raised against a 16 amino acid peptide near the center of human GJB2. The immunogen is located within amino acids 80 - 130 of GJB2. Amino Acid Sequence: HVAYRRHEKRRKFIKGE
Product Application Details	
Applications	Western Blot, Immunohistochemistry-Paraffin, ELISA, Immunocytochemistry/Immunofluorescence, Immunohistochemistry
Recommended Dilutions	Western Blot 1 - 2 ug/ml, ELISA, Immunohistochemistry, Immunocytochemistry/Immunofluorescence, Immunohistochemistry-Paraffin
Application Notes	Use in IHC-P reported in scientific literature (PMID:33171391)

**Images**

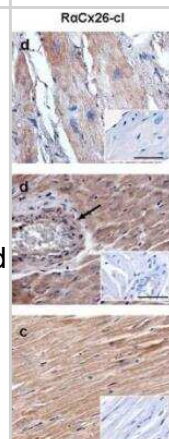
Western Blot: Connexin 26/GJB2 Antibody [NBP2-41304] - Western blotting analysis detects Cx26 using R(alpha)Cx26-Ct or R(alpha)Cx26-cl antibodies. (a) R(alpha)Cx26-Ct (A) and R(alpha)Cx26-cl (B) antibodies detected a specific 26kDa band on pig heart tissue lysates (lanes A and B are cropped blots obtained from the same gel). R(alpha)Cx26-cl recognized the 26kDa band on human and rat heart (H) lysates and on rat liver (L) sample (positive control) although two unspecific bands at molecular weights lower than 26kDa were detected. No bands were detected on smooth muscle (SM) tissue lysates (negative control) by R(alpha)Cx26-cl. R(alpha)GAPDH was used as protein loading control for rat tissue samples run on the same gel. Image collected and cropped by CiteAb from the following publication ([nature.com/articles/s41598-018-32405-2](https://www.nature.com/articles/s41598-018-32405-2)), licensed under a CC-BY license.



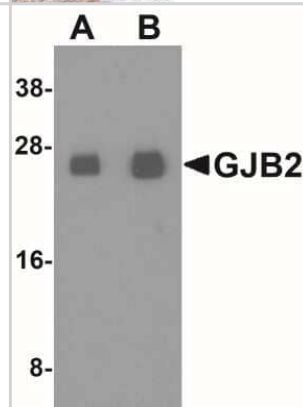
Immunocytochemistry/Immunofluorescence: Connexin 26/GJB2 Antibody [NBP2-41304] - Cx26 distribution at level of the cardiomyocyte cytoplasm. Confocal laser scanning microscopy: representative images of rat and pig heart sections. Double immunofluorescence analysis for Cx26 (red) and Cx43 (green) show a distinct cell localization of the two Cxs. (a) Three dimensional picture of the maximum intensity projection of the raw images of longitudinal rat heart section treated with R(alpha)Cx26-cl and M(alpha)Cx43. Scale bar: 20um. Image collected and cropped by CiteAb from the following publication ([nature.com/articles/s41598-018-32405-2](https://www.nature.com/articles/s41598-018-32405-2)), licensed under a CC-BY license.



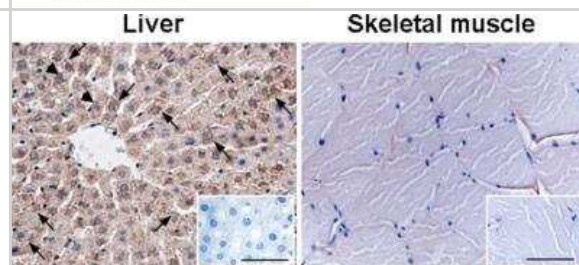
Immunohistochemistry: Connexin 26/GJB2 Antibody [NBP2-41304] - Human and rat cardiomyocytes immunoreact with R(alpha)Cx26 antibodies. Representative images of immunohistochemical analysis for Cx26 by R(alpha)Cx26-Ct or R(alpha)Cx26-cl antibodies. Longitudinal (c and d) sections showing positivity in cardiomyocytes and in smooth muscle cells of vessel (arrow); Rat (d) immunoperoxidase shows brown immunoreaction in the cell cytoplasm of working cardiomyocytes and in smooth muscle cells of vessels (arrows); positivity of cardiomyocytes and smooth muscle cells has shown, at higher magnification, in longitudinal (d) and cross sections (c); Negative controls are shown in the squares. Scale bars: 50um. Image collected and cropped by CiteAb from the following publication ([nature.com/articles/s41598-018-32405-2](https://www.nature.com/articles/s41598-018-32405-2)), licensed under a CC-BY license.



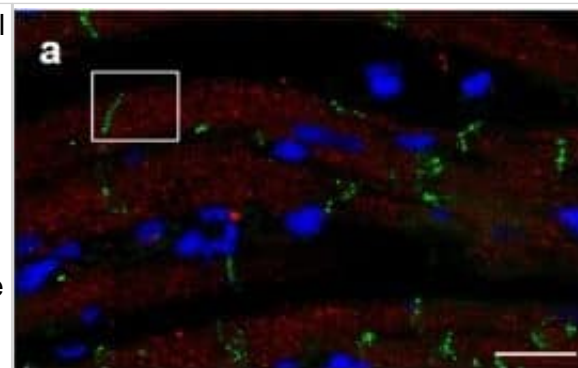
Western Blot: Connexin 26/GJB2 Antibody [NBP2-41304] - Analysis of Connexin 26/GJB2 in human colon tissue lysate with Connexin 26/GJB2 antibody at (A) 1 and (B) 2 ug/ml.



Immunohistochemistry: Connexin 26/GJB2 Antibody [NBP2-41304] - Positive and negative tissue controls for Cx26. Representative images of immunohistochemical analysis for Cx26 on rat liver and skeletal muscle sections by R(alpha)Cx26-cl antibody. Cx26 positive brown punctate staining of hepatocyte plasma membrane (arrows) and cytoplasm (arrowheads) is shown in liver. By contrast, Cx26 staining is absent in skeletal muscle. Negative controls are shown in the squares. Scale bars: 50um. Image collected and cropped by CiteAb from the following publication ([nature.com/articles/s41598-018-32405-2](https://www.nature.com/articles/s41598-018-32405-2)), licensed under a CC-BY license.



Cx26 distribution at level of the cardiomyocyte cytoplasm. (a–c) Confocal laser scanning microscopy: representative images of rat and pig heart sections. Double immunofluorescence analysis for Cx26 (red) and Cx43 (green) show a distinct cell localization of the two Cxs. (a) Three dimensional picture of the maximum intensity projection of the raw images of longitudinal rat heart section treated with R $\alpha$ Cx26-cl and M $\alpha$ Cx43. Scale bar: 20  $\mu$ m. (b) Blow up of the square shows section view after clipping of some planes. Arrows point out the clusters of Cx26 and arrowheads intercalated discs where Cx43 is mainly localized. Scale bar: 10  $\mu$ m. (c) Three dimensional picture of the maximum intensity projection of the raw images of longitudinal pig heart section treated with R $\alpha$ Cx26-Ct and M $\alpha$ Cx43. Scale bar: 50  $\mu$ m. (d–f) Immuno-electron microscopy: representative pictures of immunocytochemistry for Cx26 in rat ventricle samples. Scale bars: 200 nm. (d) Cx26 immune-gold particles (arrows) are localized at level of myofibrils (mf) and cytoplasmic vesicles (cv) but not at the intercalated discs (arrowheads). (e) Cx26 gold particles (arrows) label mitochondria (M) and myofibrils (mf). (f) Negative control does not show Cx26 immunolabeling. Image collected and cropped by CiteAb from the following open publication (<https://pubmed.ncbi.nlm.nih.gov/30228305>), licensed under a CC-BY license. Not internally tested by Novus Biologicals.



## Publications

Alessandra Falleni, Stefania Moscato, Giovanni Fulvio, Enza Polizzi, Margherita Bernardeschi, Francesco Bianchi, Valentina Donati, Manuela Cabiati, Chiara Ippolito, Silvia Del Ry, Chiara Baldini, Letizia Mattii, Ivo Piantanida Connexin Expression in Human Minor Salivary Glands: An Immunohistochemical Microscopy Study *Molecules* 2022-09-12 [PMID: 36144660] (Western Blot, Rat)

Rosalinda Madonna, Stefania Moscato, Enza Polizzi, Damiana Pieragostino, Maria Concetta Cufaro, Piero Del Boccio, Francesco Bianchi, Raffaele De Caterina, Letizia Mattii, Paul Squires, Claire Elizabeth Hills Connexin 43 and Connexin 26 Involvement in the Ponatinib-Induced Cardiomyopathy: Sex-Related Differences in a Murine Model *International Journal of Molecular Sciences* 2021-05-28 [PMID: 34071707] (Western Blot, Rat)

Falleni A, Moscato S, Sabbatini ARM Et al. Subcellular Localization of Connexin 26 in Cardiomyocytes and in Cardiomyocyte-Derived Extracellular Vesicles *Molecules* (Basel, Switzerland) 2021-11-06 [PMID: 34771134]

Moscato S, Cabiati M, Bianchi F et al. Heart and liver connexin expression related to the first stage of aging: A study on naturally aged animals *Acta Histochem* 2020-12-01 [PMID: 33171391] (IHC-P, Rat)

Moscato S, Cabiati M, Bianchi F et al. Connexin 26 Expression in Mammalian Cardiomyocytes. *Sci Rep* 2018-09-18 [PMID: 30228305] (WB, Rat)



### **Novus Biologicals USA**

10730 E. Briarwood Avenue  
Centennial, CO 80112  
USA  
Phone: 303.730.1950  
Toll Free: 1.888.506.6887  
Fax: 303.730.1966  
nb-customerservice@bio-techne.com

### **Bio-Techne Canada**

21 Canmotor Ave  
Toronto, ON M8Z 4E6  
Canada  
Phone: 905.827.6400  
Toll Free: 855.668.8722  
Fax: 905.827.6402  
canada.inquires@bio-techne.com

### **Bio-Techne Ltd**

19 Barton Lane  
Abingdon Science Park  
Abingdon, OX14 3NB, United Kingdom  
Phone: (44) (0) 1235 529449  
Free Phone: 0800 37 34 15  
Fax: (44) (0) 1235 533420  
info.EMEA@bio-techne.com

### **General Contact Information**

www.novusbio.com  
Technical Support: nb-technical@bio-techne.com  
Orders: nb-customerservice@bio-techne.com  
General: novus@novusbio.com

### **Products Related to NBP2-41304**

---

HAF008	Goat anti-Rabbit IgG Secondary Antibody [HRP]
NB7160	Goat anti-Rabbit IgG (H+L) Secondary Antibody [HRP]
NBP2-24891	Rabbit IgG Isotype Control
NBP2-79811	Human Connexin 26/GJB2 ELISA Kit (Colorimetric)

---

### **Limitations**

This product is for research use only and is not approved for use in humans or in clinical diagnosis. Primary Antibodies are guaranteed for 1 year from date of receipt.

For more information on our 100% guarantee, please visit [www.novusbio.com/guarantee](http://www.novusbio.com/guarantee)

Earn gift cards/discounts by submitting a review: [www.novusbio.com/reviews/submit/NBP2-41304](http://www.novusbio.com/reviews/submit/NBP2-41304)

Earn gift cards/discounts by submitting a publication using this product:  
[www.novusbio.com/publications](http://www.novusbio.com/publications)

