

# Product Datasheet

## CCL2/MCP1 Antibody - BSA Free NBP2-41209

Unit Size: 0.1 mg

Store at 4C short term. Aliquot and store at -20C long term. Avoid freeze-thaw cycles.

[www.novusbio.com](http://www.novusbio.com)



[technical@novusbio.com](mailto:technical@novusbio.com)

### Publications: 1

Protocols, Publications, Related Products, Reviews, Research Tools and Images at:  
[www.novusbio.com/NBP2-41209](http://www.novusbio.com/NBP2-41209)

Updated 3/4/2026 v.20.1

Earn rewards for product  
reviews and publications.

Submit a publication at [www.novusbio.com/publications](http://www.novusbio.com/publications)

Submit a review at [www.novusbio.com/reviews/destination/NBP2-41209](http://www.novusbio.com/reviews/destination/NBP2-41209)



**NBP2-41209**

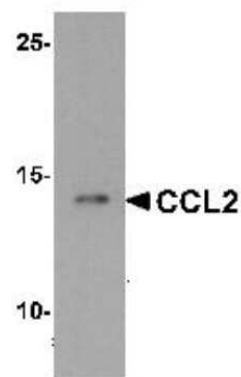
CCL2/MCP1 Antibody - BSA Free

<b>Product Information</b>	
<b>Unit Size</b>	0.1 mg
<b>Concentration</b>	1 mg/ml
<b>Storage</b>	Store at 4C short term. Aliquot and store at -20C long term. Avoid freeze-thaw cycles.
<b>Clonality</b>	Polyclonal
<b>Preservative</b>	0.02% Sodium Azide
<b>Isotype</b>	IgG
<b>Purity</b>	Peptide affinity purified
<b>Buffer</b>	PBS
<b>Target Molecular Weight</b>	14 kDa
<b>Product Description</b>	
<b>Host</b>	Rabbit
<b>Gene ID</b>	6347
<b>Gene Symbol</b>	CCL2
<b>Species</b>	Human, Mouse, Rat
<b>Reactivity Notes</b>	Immunogen displays the following percentage of sequence identity for non-tested species: Pig (81%), Horse (81%)
<b>Immunogen</b>	Antibody was raised against a 17 amino acid peptide near the carboxy terminus of human CCL2. The immunogen is located within the last 50 amino acids of CCL2. Amino Acid Sequence: ADPKQKWVQDSMDHLD
<b>Product Application Details</b>	
<b>Applications</b>	Western Blot, Immunohistochemistry-Paraffin, ELISA, Immunocytochemistry/Immunofluorescence, Immunohistochemistry
<b>Recommended Dilutions</b>	Western Blot 1 - 2 ug/mL, ELISA, Immunohistochemistry, Immunocytochemistry/Immunofluorescence 20 ug/ml, Immunohistochemistry-Paraffin 5 ug/ml

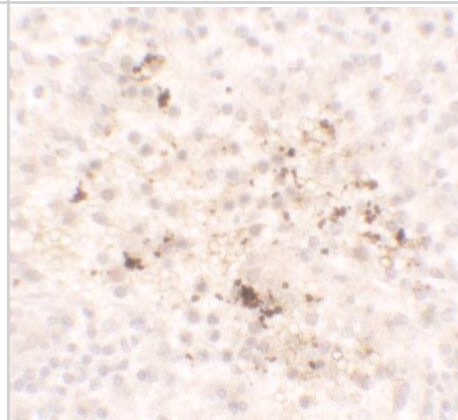


## Images

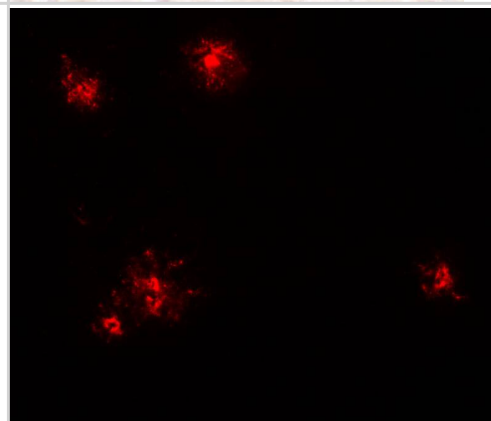
Western Blot: CCL2/MCP1 Antibody [NBP2-41209] - Analysis of CCL2 in K562 cell lysate with CCL2 antibody at 1 ug/mL.



Immunohistochemistry: CCL2/MCP1 Antibody - BSA Free [NBP2-41209] - Immunohistochemistry of CCL2/MCP1 in human spleen tissue with CCL2/MCP1 antibody at 5 ug/ml.



Immunocytochemistry/ Immunofluorescence: CCL2/MCP1 Antibody - BSA Free [NBP2-41209] - Immunofluorescence of CCL2/MCP1 in human spleen tissue with CCL2/MCP1 antibody at 20 ug/ml.



## Publications

Ziegler-Waldkirch S, Friesen M, Loreth D et al. Seed-induced A beta deposition alters neuronal function and impairs olfaction in a mouse model of Alzheimer's disease *Molecular psychiatry* 2022-07-22 [PMID: 35869271] (WB, Mouse)

Details:

1:1000 dilution, Brain homogenates from olfactory bulb



### **Novus Biologicals USA**

10730 E. Briarwood Avenue  
Centennial, CO 80112  
USA  
Phone: 303.730.1950  
Toll Free: 1.888.506.6887  
Fax: 303.730.1966  
nb-customerservice@bio-techne.com

### **Bio-Techne Canada**

21 Canmotor Ave  
Toronto, ON M8Z 4E6  
Canada  
Phone: 905.827.6400  
Toll Free: 855.668.8722  
Fax: 905.827.6402  
canada.inquires@bio-techne.com

### **Bio-Techne Ltd**

19 Barton Lane  
Abingdon Science Park  
Abingdon, OX14 3NB, United Kingdom  
Phone: (44) (0) 1235 529449  
Free Phone: 0800 37 34 15  
Fax: (44) (0) 1235 533420  
info.EMEA@bio-techne.com

### **General Contact Information**

www.novusbio.com  
Technical Support: nb-technical@bio-techne.com  
Orders: nb-customerservice@bio-techne.com  
General: novus@novusbio.com

### **Products Related to NBP2-41209**

---

HAF008	Goat anti-Rabbit IgG Secondary Antibody [HRP]
NB7160	Goat anti-Rabbit IgG (H+L) Secondary Antibody [HRP]
NBP2-24891	Rabbit IgG Isotype Control
NBP1-07035PEP	CCL2/MCP1 Antibody Blocking Peptide

---

### **Limitations**

This product is for research use only and is not approved for use in humans or in clinical diagnosis. Primary Antibodies are guaranteed for 1 year from date of receipt.

For more information on our 100% guarantee, please visit [www.novusbio.com/guarantee](http://www.novusbio.com/guarantee)

Earn gift cards/discounts by submitting a review: [www.novusbio.com/reviews/submit/NBP2-41209](http://www.novusbio.com/reviews/submit/NBP2-41209)

Earn gift cards/discounts by submitting a publication using this product:  
[www.novusbio.com/publications](http://www.novusbio.com/publications)

