

# Product Datasheet

## CSE1L/CAS/Exportin-2 Antibody - BSA Free NBP2-38384

Unit Size: 0.1 ml

Store at 4C short term. Aliquot and store at -20C long term. Avoid freeze-thaw cycles.

[www.novusbio.com](http://www.novusbio.com)



[technical@novusbio.com](mailto:technical@novusbio.com)

Protocols, Publications, Related Products, Reviews, Research Tools and Images at:  
[www.novusbio.com/NBP2-38384](http://www.novusbio.com/NBP2-38384)

Updated 5/11/2026 v.20.1

Earn rewards for product  
reviews and publications.

Submit a publication at [www.novusbio.com/publications](http://www.novusbio.com/publications)

Submit a review at [www.novusbio.com/reviews/destination/NBP2-38384](http://www.novusbio.com/reviews/destination/NBP2-38384)



**NBP2-38384**

CSE1L/CAS/Exportin-2 Antibody - BSA Free

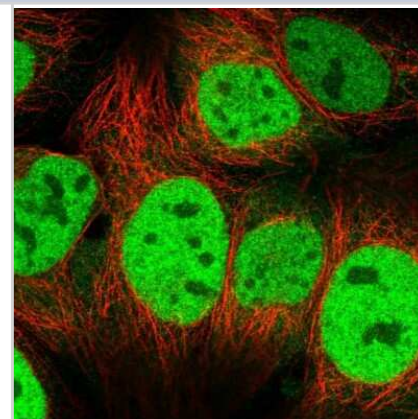
Product Information	
Unit Size	0.1 ml
Concentration	Concentrations vary lot to lot. See vial label for concentration. If unlisted please contact technical services.
Storage	Store at 4C short term. Aliquot and store at -20C long term. Avoid freeze-thaw cycles.
Clonality	Polyclonal
Preservative	0.02% Sodium Azide
Isotype	IgG
Purity	Affinity purified
Buffer	PBS (pH 7.2) and 40% Glycerol

Product Description	
Host	Rabbit
Gene ID	1434
Gene Symbol	CSE1L
Species	Human
Immunogen	This antibody was developed against a recombinant protein corresponding to amino acids: HGITQANELVNLTEFFVNHILPDLKSANVNEFPVLKADGIKYIMIFRNQVPKEHLL VSIPLLINHLQAESIVVHTYAAHALERLFTMRGPNNATLF

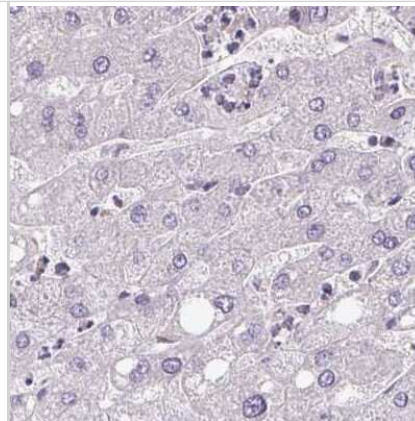
Product Application Details	
Applications	Immunohistochemistry-Paraffin, Immunocytochemistry/ Immunofluorescence, Immunohistochemistry
Recommended Dilutions	Immunohistochemistry 1:20 - 1:50, Immunocytochemistry/ Immunofluorescence 0.25-2 ug/ml, Immunohistochemistry-Paraffin 1:20 - 1:50
Application Notes	For IHC-Paraffin, HIER pH 6 retrieval is recommended. Immunocytochemistry/Immunofluorescence Fixation Permeabilization: Use PFA/Triton X-100.

**Images**

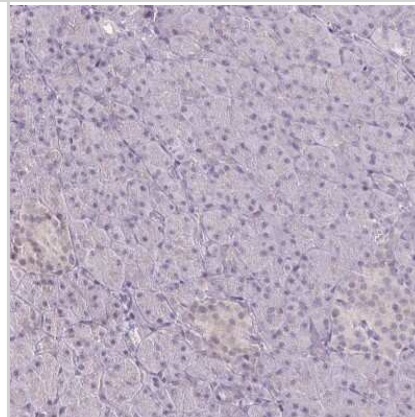
Immunocytochemistry/Immunofluorescence: CSE1L/CAS/Exportin-2 Antibody [NBP2-38384] - Staining of human cell line CACO-2 shows positivity in cytoplasm and nucleus but excluded from the nucleoli.



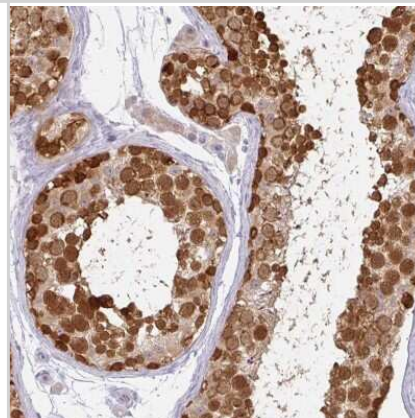
Immunohistochemistry-Paraffin: CSE1L/CAS/Exportin-2 Antibody [NBP2-38384] - Staining of human liver.



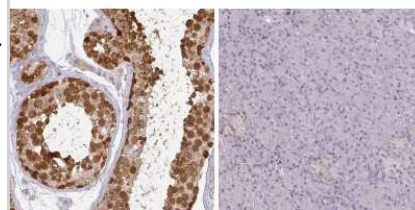
Immunohistochemistry-Paraffin: CSE1L/CAS/Exportin-2 Antibody [NBP2-38384] - Staining of human pancreas shows low expression as expected.



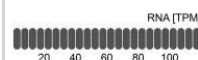
Immunohistochemistry-Paraffin: CSE1L/CAS/Exportin-2 Antibody [NBP2-38384] - Staining of human testis shows high expression.



Immunohistochemistry-Paraffin: CSE1L/CAS/Exportin-2 Antibody [NBP2-38384] - Staining in human testis and pancreas tissues using anti-CSE1L antibody. Corresponding CSE1L RNA-seq data are presented for the same tissues.



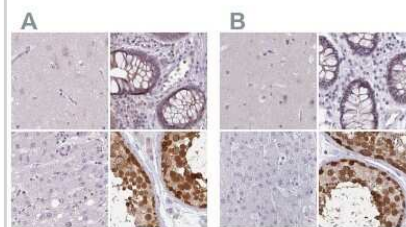
CSE1L in Testis



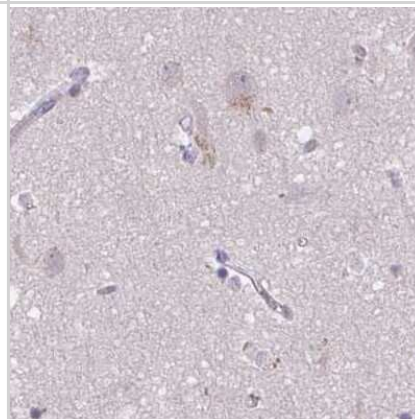
CSE1L in Pancreas



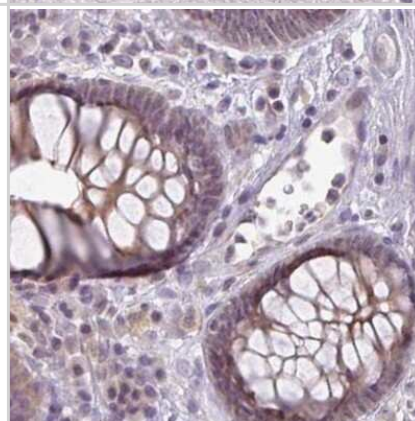
Immunohistochemistry-Paraffin: CSE1L/CAS/Exportin-2 Antibody [NBP2-38384] - Staining of human cerebral cortex, colon, liver and testis using Anti-CSE1L antibody NBP2-38384 (A) shows similar protein distribution across tissues to independent antibody NBP2-38383 (B).



Immunohistochemistry-Paraffin: CSE1L/CAS/Exportin-2 Antibody [NBP2-38384] - Staining of human cerebral cortex.



Immunohistochemistry-Paraffin: CSE1L/CAS/Exportin-2 Antibody [NBP2-38384] - Staining of human colon.





### **Novus Biologicals USA**

10730 E. Briarwood Avenue  
Centennial, CO 80112  
USA  
Phone: 303.730.1950  
Toll Free: 1.888.506.6887  
Fax: 303.730.1966  
nb-customerservice@bio-techne.com

### **Bio-Techne Canada**

21 Canmotor Ave  
Toronto, ON M8Z 4E6  
Canada  
Phone: 905.827.6400  
Toll Free: 855.668.8722  
Fax: 905.827.6402  
canada.inquires@bio-techne.com

### **Bio-Techne Ltd**

19 Barton Lane  
Abingdon Science Park  
Abingdon, OX14 3NB, United Kingdom  
Phone: (44) (0) 1235 529449  
Free Phone: 0800 37 34 15  
Fax: (44) (0) 1235 533420  
info.EMEA@bio-techne.com

### **General Contact Information**

www.novusbio.com  
Technical Support: nb-technical@bio-techne.com  
Orders: nb-customerservice@bio-techne.com  
General: novus@novusbio.com

### **Limitations**

This product is for research use only and is not approved for use in humans or in clinical diagnosis. Primary Antibodies are guaranteed for 1 year from date of receipt.

For more information on our 100% guarantee, please visit [www.novusbio.com/guarantee](http://www.novusbio.com/guarantee)

Earn gift cards/discounts by submitting a review: [www.novusbio.com/reviews/submit/NBP2-38384](http://www.novusbio.com/reviews/submit/NBP2-38384)

Earn gift cards/discounts by submitting a publication using this product:  
[www.novusbio.com/publications](http://www.novusbio.com/publications)

