

Product Datasheet

beta Tubulin Antibody (BT7R) - Azide and BSA Free NBP2-37830

Unit Size: 100 ug

Store at -20C. Avoid freeze-thaw cycles.

www.novusbio.com



technical@novusbio.com

Publications: 1

Protocols, Publications, Related Products, Reviews, Research Tools and Images at:
www.novusbio.com/NBP2-37830

Updated 9/9/2025 v.20.1

Earn rewards for product
reviews and publications.

Submit a publication at www.novusbio.com/publications

Submit a review at www.novusbio.com/reviews/destination/NBP2-37830



NBP2-37830

beta Tubulin Antibody (BT7R) - Azide and BSA Free

Product Information	
Unit Size	100 ug
Concentration	1 mg/ml
Storage	Store at -20C. Avoid freeze-thaw cycles.
Clonality	Monoclonal
Clone	BT7R
Preservative	No Preservative
Isotype	IgG2a
Purity	Protein A purified
Buffer	PBS (pH 7.2)

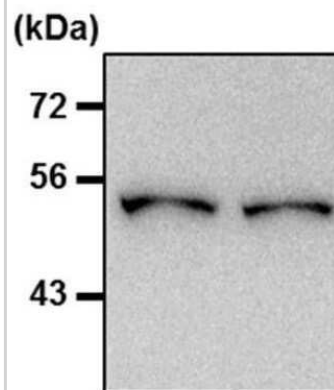
Product Description	
Description	Novus Biologicals Mouse beta Tubulin Antibody (BT7R) - Azide and BSA Free (NBP2-37830) is a monoclonal antibody validated for use in IHC, WB, ELISA, Flow and ICC/IF. Anti-beta Tubulin Antibody: Cited in 1 publication. All Novus Biologicals antibodies are covered by our 100% guarantee.
Host	Mouse
Gene ID	203068
Gene Symbol	TUBB
Species	Human, Mouse, Rat, Avian, Chicken, Primate, Rabbit
Reactivity Notes	Please note that this antibody is reactive to Mouse and derived from the same host, Mouse. Additional Mouse on Mouse blocking steps may be required for IHC and ICC experiments. Please contact Technical Support for more information.
Specificity/Sensitivity	Detects beta-tubulin in human, monkey, mouse, rat, rabbit and chicken samples with ELISA, Western blot and immunofluorescence applications.
Immunogen	KLH conjugated peptide of the N-terminus of Beta-Tubulin.

Product Application Details	
Applications	Western Blot, Immunohistochemistry-Paraffin, ELISA, Flow Cytometry, Flow (Intracellular), Immunocytochemistry/ Immunofluorescence, Immunohistochemistry, CyTOF-ready
Recommended Dilutions	Western Blot 1:2000 - 1:5000, Flow Cytometry 1 ug/test, ELISA 1:100 - 1:2000, Immunohistochemistry 1:10 - 1:500, Immunocytochemistry/ Immunofluorescence 1:500 - 1:2000, Immunohistochemistry-Paraffin 1:10 - 1:500, Flow (Intracellular), CyTOF-ready

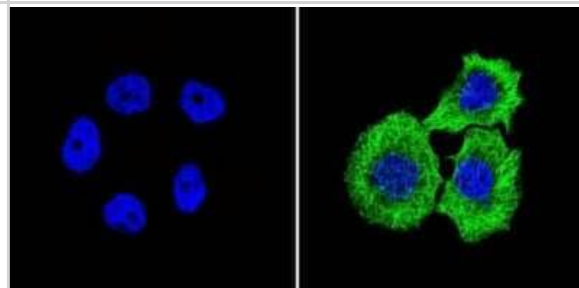


Images

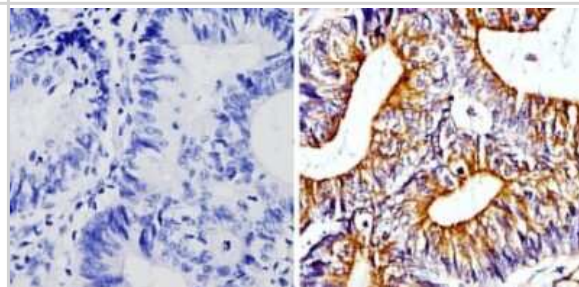
Western Blot: beta Tubulin Antibody (BT7R) [NBP2-37830] - Analysis of 20ug of THP-1 whole cell lysate per well onto a SDS-PAGE gel.



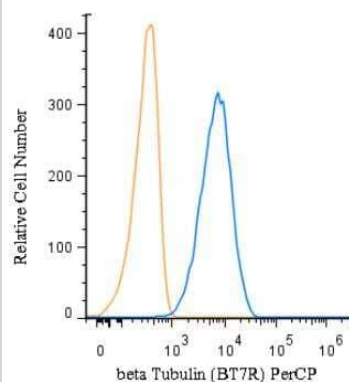
Immunocytochemistry/Immunofluorescence: beta Tubulin Antibody (BT7R) [NBP2-37830] - Analysis of Beta-Tubulin (green) showing staining in the in the cytoskeleton of A431 cells (right) compared to a negative control without primary antibody (left).



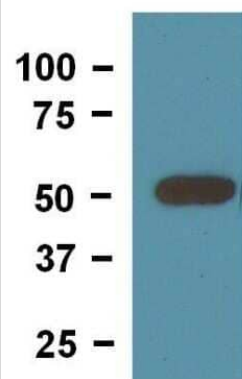
Immunohistochemistry-Paraffin: beta Tubulin Antibody (BT7R) [NBP2-37830] - Analysis showing staining in the cytoskeleton of human colon carcinoma (right) compared with a negative control without primary antibody (left).



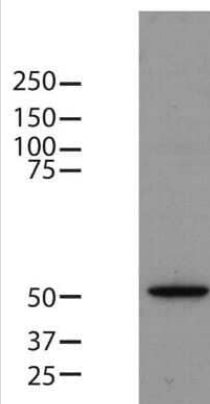
Flow (Intracellular): beta Tubulin Antibody (BT7R) [NBP2-37830] - An intracellular stain was performed on HeLa cells with beta Tubulin Antibody (BT7R) NBP2-37830PCP (blue) and a matched isotype control (orange). Cells were fixed with 4% PFA and then permeabilized with 0.1% saponin. Cells were incubated in an antibody dilution of 5 ug/mL for 30 minutes at room temperature. Both antibodies were conjugated to PerCP.



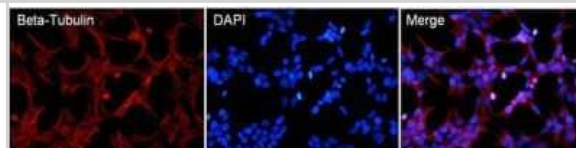
Western Blot: beta Tubulin Antibody (BT7R) [NBP2-37830] - Analysis of mouse brain tissue lysate loaded at 10 ug/lane and detected with 0.25 ug/ml of NBP2-37830.



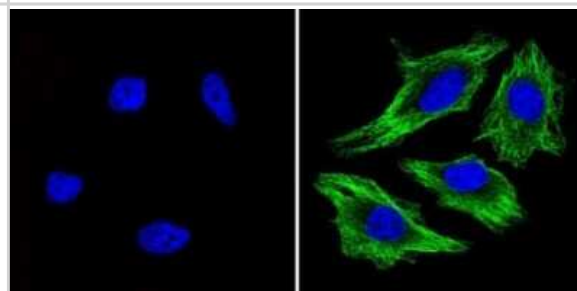
Western Blot: beta Tubulin Antibody (BT7R) [NBP2-37830] - Analysis of 8ug of mouse embryonic stem cell lysate onto an SDS-PAGE gel.



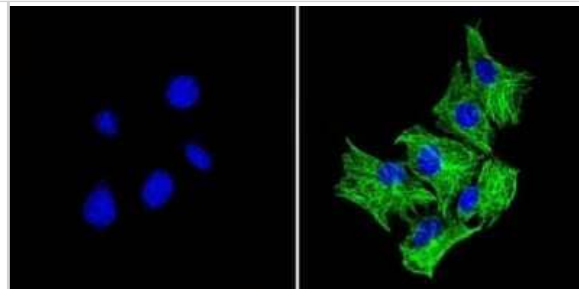
Immunocytochemistry/Immunofluorescence: beta Tubulin Antibody (BT7R) [NBP2-37830] - Analysis of Beta-Tubulin (red) in HEK293T cells. Cells fixed in 4% formaldehyde were permeabilized and blocked with 1X PBS containing 5% BSA and 0.3% Triton X-100 for 1 hour at room temperature. Cells were probed with a Beta-Tubulin monoclonal antibody at a dilution of 1:100 overnight at 4C in 1X PBS containing 1% BSA and 0.3% Triton X-100, washed with 1X PBS, and incubated with a fluorophore-conjugated goat anti-mouse IgG secondary antibody at a dilution of 1:200 for 1 hour at room temperature. Nuclei (blue) were stained with DAPI. Images were taken on a Leica DM1000 microscope at 40X magnification. Data courtesy of the Innovators Program.



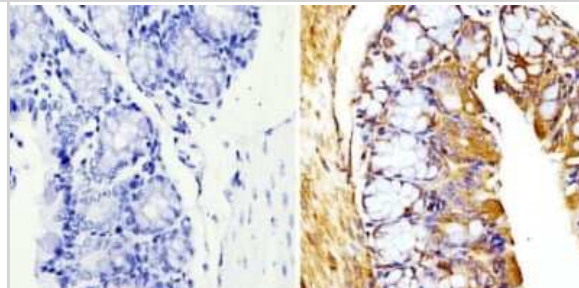
Immunocytochemistry/Immunofluorescence: beta Tubulin Antibody (BT7R) [NBP2-37830] - Analysis of Beta-Tubulin (green) showing staining in the in the cytoskeleton of Hela cells (right) compared to a negative control without primary antibody (left).



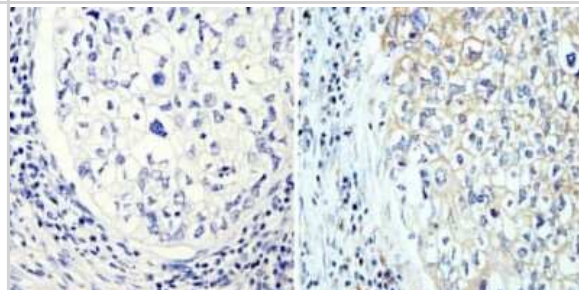
Immunocytochemistry/Immunofluorescence: beta Tubulin Antibody (BT7R) [NBP2-37830] - Analysis of Beta-Tubulin (green) showing staining in the cytoskeleton of C2C12 cells (right) compared to a negative control without primary antibody (left). Formalin-fixed cells were permeabilized with 0.1% Triton X-100 in TBS for 5-10 minutes and blocked with 3% BSA-PBS for 30 minutes at room temperature. Cells were probed with a Beta-Tubulin loading control antibody in 3% BSA-PBS at a dilution of 1:150 and incubated overnight at 4C in a humidified chamber. Cells were washed with PBST and incubated with a DyLight-conjugated secondary antibody in PBS at room temperature in the dark. Nuclei (blue) were stained with Hoechst or DAPI. Images were taken at a magnification of 60x.



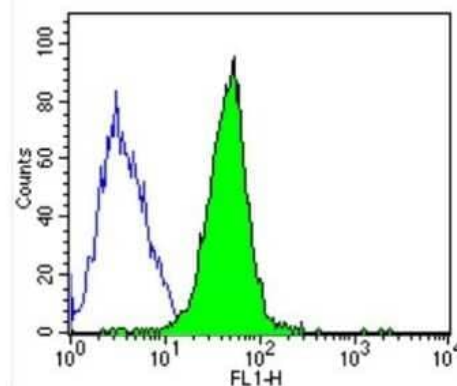
Immunohistochemistry-Paraffin: beta Tubulin Antibody (BT7R) [NBP2-37830] - Analysis of Beta-Tubulin showing staining in the cytoskeleton of paraffin-embedded mouse colon tissue (right) compared with a negative control without primary antibody (left). To expose target proteins, antigen retrieval was performed using 10mM sodium citrate (pH 6.0), microwaved for 8-15 min. Following antigen retrieval, tissues were blocked in 3% H₂O₂-methanol for 15 min at room temperature, washed with ddH₂O and PBS, and then probed with a Beta-Tubulin loading control antibody diluted in 3% BSA-PBS at a dilution of 1:20 overnight at 4C in a humidified chamber. Tissues were washed extensively in PBST and detection was performed using an HRP-conjugated secondary antibody followed by colorimetric detection using a DAB kit. Tissues were counterstained with hematoxylin and dehydrated with ethanol and xylene to prep for mounting.



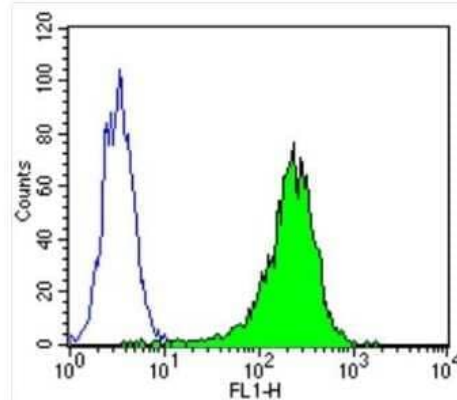
Immunohistochemistry-Paraffin: beta Tubulin Antibody (BT7R) [NBP2-37830] - Analysis showing staining in the cytoskeleton of paraffin-embedded human lung adenocarcinoma (right) compared with a negative control without primary antibody (left).



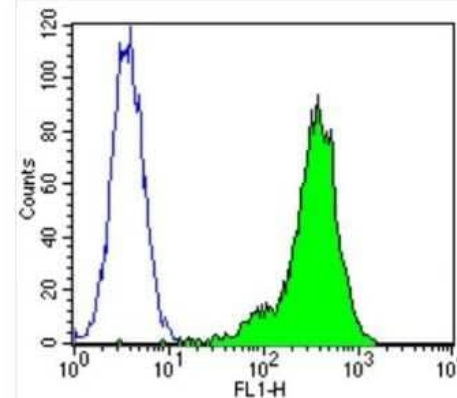
Flow Cytometry: beta Tubulin Antibody (BT7R) [NBP2-37830] - Analysis of Beta Tubulin in NIH-3T3 cells (green) compared to an isotype control (blue).



Flow Cytometry: beta Tubulin Antibody (BT7R) [NBP2-37830] - Analysis of Beta Tubulin in Hela cells (green) compared to an isotype control (blue).



Flow Cytometry: beta Tubulin Antibody (BT7R) [NBP2-37830] - Analysis of Beta Tubulin in CEM cells (green) compared to an isotype control (blue).



Publications

Cox RM, Sourimant J, Toots M et al. Orally efficacious broad-spectrum allosteric inhibitor of paramyxovirus polymerase Nat Microbiol 2020-07-13 [PMID: 32661315] (Human)

Details:

Citation using the Alexa Fluor 647 format of this antibody.



Novus Biologicals USA

10730 E. Briarwood Avenue
Centennial, CO 80112
USA
Phone: 303.730.1950
Toll Free: 1.888.506.6887
Fax: 303.730.1966
nb-customerservice@bio-techne.com

Bio-Techne Canada

21 Canmotor Ave
Toronto, ON M8Z 4E6
Canada
Phone: 905.827.6400
Toll Free: 855.668.8722
Fax: 905.827.6402
canada.inquires@bio-techne.com

Bio-Techne Ltd

19 Barton Lane
Abingdon Science Park
Abingdon, OX14 3NB, United Kingdom
Phone: (44) (0) 1235 529449
Free Phone: 0800 37 34 15
Fax: (44) (0) 1235 533420
info.EMEA@bio-techne.com

General Contact Information

www.novusbio.com
Technical Support: nb-technical@bio-techne.com
Orders: nb-customerservice@bio-techne.com
General: novus@novusbio.com

Products Related to NBP2-37830

NBP2-33376H	Blue Marker Antibody (6F4-F6) [HRP]
HAF007	Goat anti-Mouse IgG Secondary Antibody [HRP]
NB7539	Goat anti-Mouse IgG (H+L) Secondary Antibody [HRP]
NBP1-96778	Mouse IgG2a Isotype Control (M2A)

Limitations

This product is for research use only and is not approved for use in humans or in clinical diagnosis. Primary Antibodies are guaranteed for 1 year from date of receipt.

For more information on our 100% guarantee, please visit www.novusbio.com/guarantee

Earn gift cards/discounts by submitting a review: www.novusbio.com/reviews/submit/NBP2-37830

Earn gift cards/discounts by submitting a publication using this product:
www.novusbio.com/publications

