

Product Datasheet

CEBP Beta Antibody (3H9)

NBP2-37567

Unit Size: 0.1 ml

Store at 4C short term. Aliquot and store at -20C long term. Avoid freeze-thaw cycles.

www.novusbio.com



technical@novusbio.com

Protocols, Publications, Related Products, Reviews, Research Tools and Images at:
www.novusbio.com/NBP2-37567

Updated 1/11/2026 v.20.1

Earn rewards for product
reviews and publications.

Submit a publication at www.novusbio.com/publications

Submit a review at www.novusbio.com/reviews/destination/NBP2-37567



NBP2-37567

CEBP Beta Antibody (3H9)

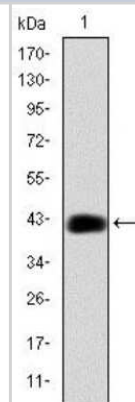
Product Information	
Unit Size	0.1 ml
Concentration	This product is unpurified. The exact concentration of antibody is not quantifiable.
Storage	Store at 4C short term. Aliquot and store at -20C long term. Avoid freeze-thaw cycles.
Clonality	Monoclonal
Clone	3H9
Preservative	0.03% Sodium Azide
Isotype	IgG1
Purity	Ascites
Buffer	Ascites
Target Molecular Weight	36 kDa

Product Description	
Description	Novus Biologicals Mouse CEBP Beta Antibody (3H9) (NBP2-37567) is a monoclonal antibody validated for use in WB, ELISA and Flow. All Novus Biologicals antibodies are covered by our 100% guarantee.
Host	Mouse
Gene ID	1051
Gene Symbol	CEBPB
Species	Human
Immunogen	Purified recombinant fragment of human CEBP Beta expressed in E. Coli.

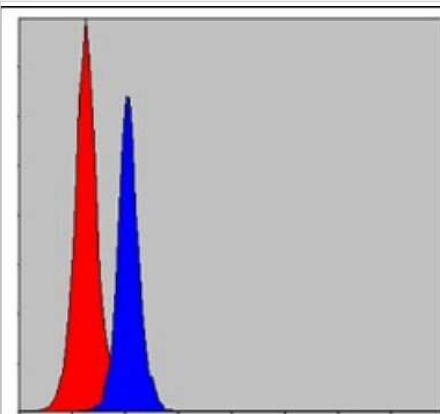
Product Application Details	
Applications	Western Blot, ELISA, Flow Cytometry
Recommended Dilutions	Western Blot 1:500 - 1:2000, Flow Cytometry 1:200 - 1:400, ELISA 1:10000

Images

Western Blot: CEBP Beta Antibody (3H9) [NBP2-37567] - Western blot analysis using CEBPB mAb against human CEBPB (AA: 161-338) recombinant protein. (Expected MW is 44.5 kDa)

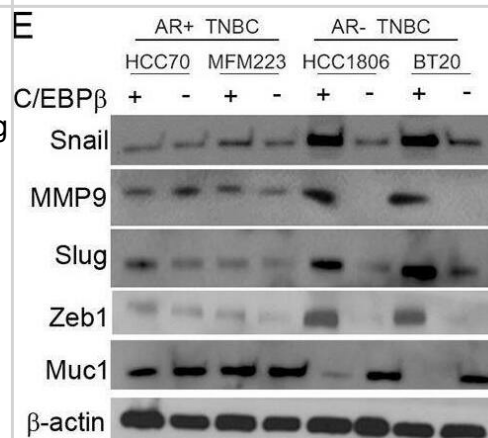


Flow Cytometry: CEBP Beta Antibody (3H9) [NBP2-37567] - Flow cytometric analysis of MCF-7 cells using CEBPB mouse mAb (blue) and negative control (red).

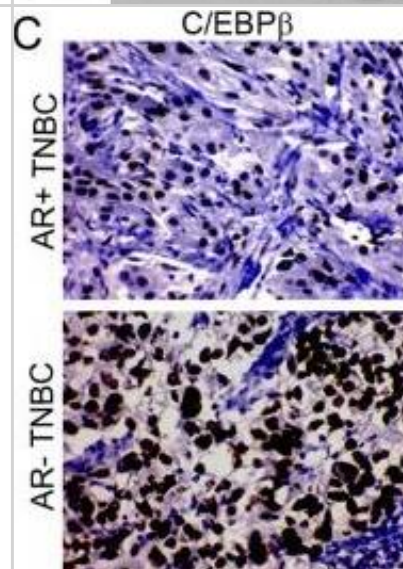


ELISA: CEBP Beta Antibody (3H9) [NBP2-37567] - Red: Control Antigen (100ng); Purple: Antigen (10ng); Green: Antigen (50ng); Blue: Antigen (100ng)

Silencing of KIFC1 and C/EBP β reduces invasion and EMT in AR-TNBC cells. (A–D) Representative images (A) and bar graphs (B–D) of control (A, B–D), C/EBP β KD (A, B), KIFC1 KD (A, C), and CW069-treated (A, D) and AR + TNBC and AR-TNBC cell lines. (E, F) Immunoblots showing expression levels of various EMT markers in KIFC1 KD (E) and C/EBP β KD in AR + TNBC and AR-TNBC cells (F). HCC70, MFM223 (AR + TNBC); HCC1806, BT20 (AR-TNBC). Bars indicate mean \pm SEM. Unpaired two-tailed Student's t-test with Welch's correction was used to determine statistical significance. *P < 0.05, **P < 0.005, ****P < 0.00005, ns = non-significant Image collected and cropped by CiteAb from the following open publication (<https://pubmed.ncbi.nlm.nih.gov/40448099>), licensed under a CC-BY license. Not internally tested by Novus Biologicals.



AR may repress C/EBP β expression in breast cancer. (A–B, D) Correlation matrix of AR and C/EBP β mRNA levels in TCGA (A), CCLE (B), and Emory Decatur (D) datasets. (C, F) Representative IHC images (C) and bar graphs (F) showing the expression of C/EBP β in patients with AR + TNBC (n = 21) and AR-TNBC (n = 58) in the Emory Decatur cohort. (G, H) ChIP results showing AR binding to the C/EBP β promoter (G). (E) Bar graphs showing mRNA levels of C/EBP β in AR + TNBC and AR-TNBC cell lines. (I) Immunoblots showing C/EBP β expression levels in AR + TNBC and AR-TNBC cell lines. (J, K) Schematic and bar graphs showing luciferase assay in AR + TNBC and AR-TNBC cells. HCC70, MFM223 (AR + TNBC); 3, 4: HCC1806, BT20 (AR-TNBC). Bars indicate mean \pm SEM. Unpaired two-tailed Student's t-test with Welch's correction was used to determine statistical significance. **P < 0.005, ***P < 0.0005, ns = non-significant Image collected and cropped by CiteAb from the following open publication (<https://pubmed.ncbi.nlm.nih.gov/40448099>), licensed under a CC-BY license. Not internally tested by Novus Biologicals.





Novus Biologicals USA

10730 E. Briarwood Avenue
Centennial, CO 80112
USA
Phone: 303.730.1950
Toll Free: 1.888.506.6887
Fax: 303.730.1966
nb-customerservice@bio-techne.com

Bio-Techne Canada

21 Canmotor Ave
Toronto, ON M8Z 4E6
Canada
Phone: 905.827.6400
Toll Free: 855.668.8722
Fax: 905.827.6402
canada.inquires@bio-techne.com

Bio-Techne Ltd

19 Barton Lane
Abingdon Science Park
Abingdon, OX14 3NB, United Kingdom
Phone: (44) (0) 1235 529449
Free Phone: 0800 37 34 15
Fax: (44) (0) 1235 533420
info.EMEA@bio-techne.com

General Contact Information

www.novusbio.com
Technical Support: nb-technical@bio-techne.com
Orders: nb-customerservice@bio-techne.com
General: novus@novusbio.com

Products Related to NBP2-37567

NBP2-33376H	Blue Marker Antibody (6F4-F6) [HRP]
HAF007	Goat anti-Mouse IgG Secondary Antibody [HRP]
NB7539	Goat anti-Mouse IgG (H+L) Secondary Antibody [HRP]
NBP1-97005-0.5mg	Mouse IgG1 Isotype Control (MG1)

Limitations

This product is for research use only and is not approved for use in humans or in clinical diagnosis. Primary Antibodies are guaranteed for 1 year from date of receipt.

For more information on our 100% guarantee, please visit www.novusbio.com/guarantee

Earn gift cards/discounts by submitting a review: www.novusbio.com/reviews/submit/NBP2-37567

Earn gift cards/discounts by submitting a publication using this product:
www.novusbio.com/publications

