

Product Datasheet

CS Citrate Synthase Antibody (CL2545) - BSA Free NBP2-36771

Unit Size: 0.1 ml

Store at 4C short term. Aliquot and store at -20C long term. Avoid freeze-thaw cycles.

www.novusbio.com



technical@novusbio.com

Protocols, Publications, Related Products, Reviews, Research Tools and Images at:
www.novusbio.com/NBP2-36771

Updated 9/9/2025 v.20.1

Earn rewards for product
reviews and publications.

Submit a publication at www.novusbio.com/publications

Submit a review at www.novusbio.com/reviews/destination/NBP2-36771

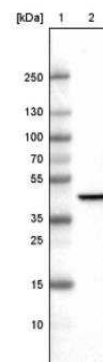


NBP2-36771**CS Citrate Synthase Antibody (CL2545) - BSA Free**

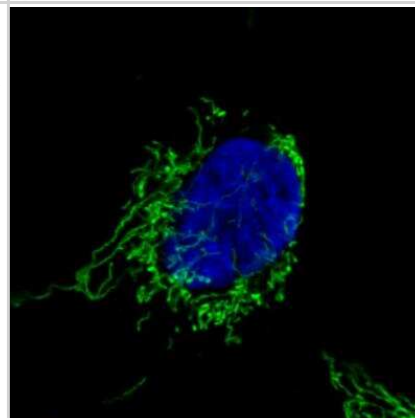
Product Information	
Unit Size	0.1 ml
Concentration	Concentrations vary lot to lot. See vial label for concentration. If unlisted please contact technical services.
Storage	Store at 4C short term. Aliquot and store at -20C long term. Avoid freeze-thaw cycles.
Clonality	Monoclonal
Clone	CL2545
Preservative	0.02% Sodium Azide
Isotype	IgG1
Purity	Protein A purified
Buffer	PBS (pH 7.2) and 40% Glycerol
Product Description	
Description	Novus Biologicals Mouse CS Citrate Synthase Antibody (CL2545) - BSA Free (NBP2-36771) is a monoclonal antibody validated for use in IHC, WB and ICC/IF. All Novus Biologicals antibodies are covered by our 100% guarantee.
Host	Mouse
Gene ID	1431
Gene Symbol	CS
Species	Human
Reactivity Notes	Please note that this antibody is reactive to Mouse and derived from the same host, Mouse. Mouse-On-Mouse blocking reagent may be needed for IHC and ICC experiments to reduce high background signal. You can find these reagents under catalog numbers PK-2200-NB and MP-2400-NB. Please contact Technical Support if you have any questions
Immunogen	This antibody was developed using a recombinant protein derived from O75390, with the exact immunogen sequence remaining proprietary.
Product Application Details	
Applications	Western Blot, Immunohistochemistry-Paraffin, Immunocytochemistry/Immunofluorescence, Immunohistochemistry
Recommended Dilutions	Western Blot 1 ug/ml, Immunohistochemistry 1:2500 - 1:5000, Immunocytochemistry/ Immunofluorescence 2-10 ug/ml, Immunohistochemistry-Paraffin 1:2500 - 1:5000
Application Notes	For IHC-Paraffin, HIER pH 6 retrieval is recommended. ICC/IF, Fixation Permeabilization: Use PFA/Triton X-100.

Images

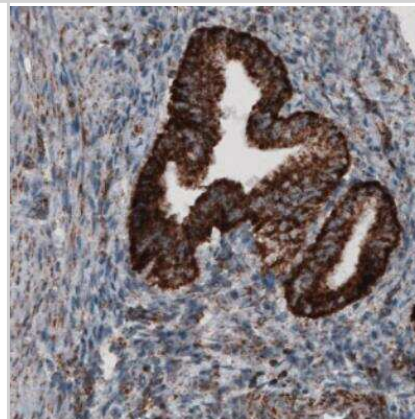
Western Blot: CS Citrate Synthase Antibody (CL2545) [NBP2-36771] - Lane 1: Marker [kDa]. Lane 2: Human cell line U-251 MG



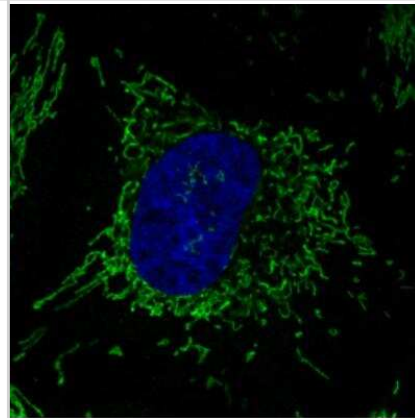
Immunocytochemistry/Immunofluorescence: CS Citrate Synthase Antibody (CL2545) [NBP2-36771] - Staining in U251 cell line showing specific mitochondrial staining in green. Microtubule-staining and nuclear probes are visualized in red and blue respectively (where available). Antibody staining is shown in green.



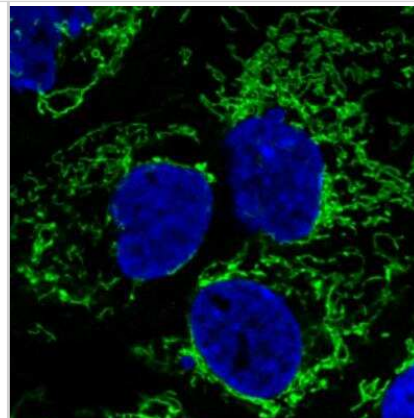
Immunohistochemistry-Paraffin: CS Citrate Synthase Antibody (CL2545) [NBP2-36771] - Staining of human endometrium shows strong granular cytoplasmic immunoreactivity in glandular cells.



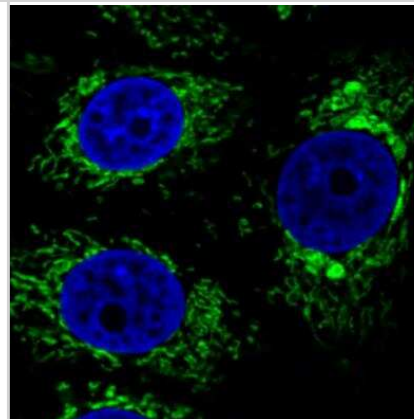
Immunocytochemistry/Immunofluorescence: CS Citrate Synthase Antibody (CL2545) [NBP2-36771] - Staining in HeLa cell line showing specific mitochondrial staining in green. Microtubule-staining and nuclear probes are visualized in red and blue respectively (where available). Antibody staining is shown in green.



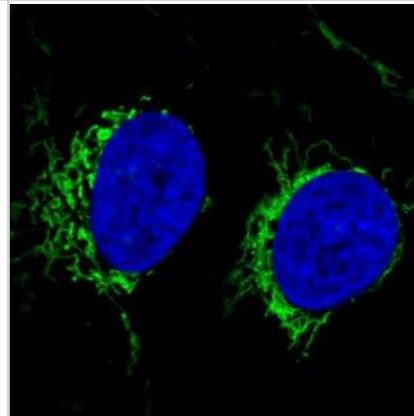
Immunocytochemistry/Immunofluorescence: CS Citrate Synthase Antibody (CL2545) [NBP2-36771] - Staining of human cell line A431 showing specific mitochondrial staining in green. Microtubule-staining and nuclear probes are visualized in red and blue respectively (where available). Antibody staining is shown in green.



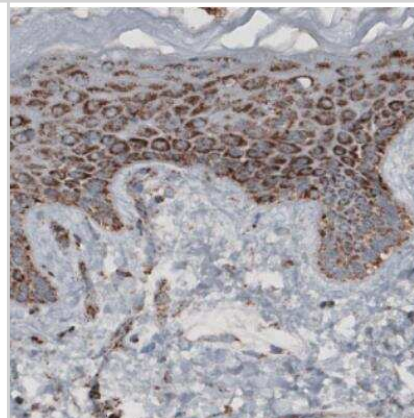
Immunocytochemistry/Immunofluorescence: CS Citrate Synthase Antibody (CL2545) [NBP2-36771] - Staining in MCF7 cell line showing specific mitochondrial staining in green. Microtubule-staining and nuclear probes are visualized in red and blue respectively (where available). Antibody staining is shown in green.



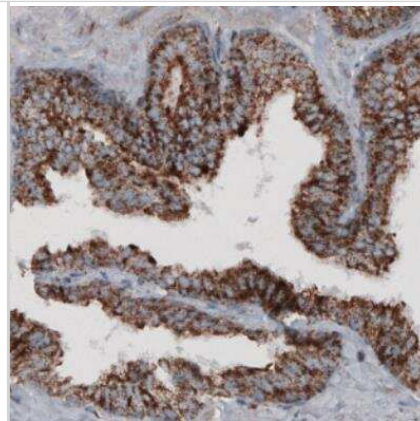
Immunocytochemistry/Immunofluorescence: CS Citrate Synthase Antibody (CL2545) [NBP2-36771] - Staining in U2OS cell line with Anti-CS monoclonal antibody, showing specific mitochondrial staining in green. Microtubule-staining and nuclear probes are visualized in red and blue respectively (where available). Antibody staining is shown in green.



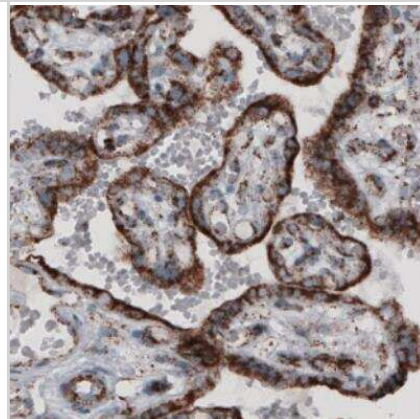
Immunohistochemistry-Paraffin: CS Citrate Synthase Antibody (CL2545) [NBP2-36771] - Staining of human skin shows granular cytoplasmic immunoreactivity in epithelial cells.



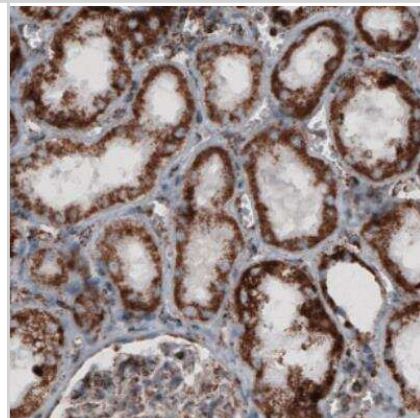
Immunohistochemistry-Paraffin: CS Citrate Synthase Antibody (CL2545) [NBP2-36771] - Staining of human prostate shows strong granular cytoplasmic immunoreactivity in glandular cells.



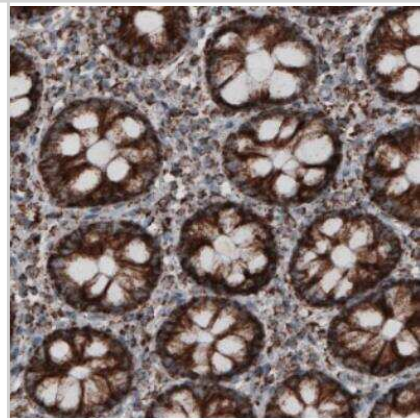
Immunohistochemistry-Paraffin: CS Citrate Synthase Antibody (CL2545) [NBP2-36771] - Staining of human placenta shows strong granular cytoplasmic positivity in the trophoblast.



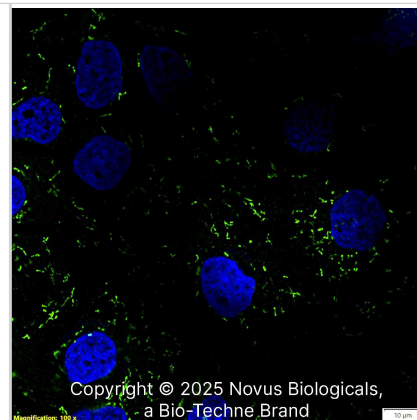
Immunohistochemistry-Paraffin: CS Citrate Synthase Antibody (CL2545) [NBP2-36771] - Staining of human kidney shows strong granular cytoplasmic positivity in renal tubules.



Immunohistochemistry-Paraffin: CS Citrate Synthase Antibody (CL2545) [NBP2-36771] - Staining of human colon shows granular cytoplasmic immunoreactivity in both glandular and lamina propria cells.



CS Citrate Synthase (CL2545) was detected in immersion fixed A431 human skin carcinoma cell line using Mouse anti-CS Citrate Synthase (CL2545) Protein A Purified Monoclonal Antibody conjugated to Alexa Fluor® 488 (Catalog # NBP2-36771) (green) at 2 µg/mL overnight at 4C. Cells were counterstained with DAPI (blue). Cells were imaged using a 100X objective and digitally deconvolved.





Novus Biologicals USA

10730 E. Briarwood Avenue
Centennial, CO 80112
USA
Phone: 303.730.1950
Toll Free: 1.888.506.6887
Fax: 303.730.1966
nb-customerservice@bio-techne.com

Bio-Techne Canada

21 Canmotor Ave
Toronto, ON M8Z 4E6
Canada
Phone: 905.827.6400
Toll Free: 855.668.8722
Fax: 905.827.6402
canada.inquires@bio-techne.com

Bio-Techne Ltd

19 Barton Lane
Abingdon Science Park
Abingdon, OX14 3NB, United Kingdom
Phone: (44) (0) 1235 529449
Free Phone: 0800 37 34 15
Fax: (44) (0) 1235 533420
info.EMEA@bio-techne.com

General Contact Information

www.novusbio.com
Technical Support: nb-technical@bio-techne.com
Orders: nb-customerservice@bio-techne.com
General: novus@novusbio.com

Products Related to NBP2-36771

NBP2-36771PEP	CS Citrate Synthase Recombinant Protein Antigen
NBP2-33376H	Blue Marker Antibody (6F4-F6) [HRP]
HAF007	Goat anti-Mouse IgG Secondary Antibody [HRP]
NB7539	Goat anti-Mouse IgG (H+L) Secondary Antibody [HRP]
NBP1-97005-0.5mg	Mouse IgG1 Isotype Control (MG1)

Limitations

This product is for research use only and is not approved for use in humans or in clinical diagnosis. Primary Antibodies are guaranteed for 1 year from date of receipt.

For more information on our 100% guarantee, please visit www.novusbio.com/guarantee

Earn gift cards/discounts by submitting a review: www.novusbio.com/reviews/submit/NBP2-36771

Earn gift cards/discounts by submitting a publication using this product:
www.novusbio.com/publications

