

Product Datasheet

NIFK Antibody (CL2240) - BSA Free NBP2-36749

Unit Size: 0.1 ml

Store at 4C short term. Aliquot and store at -20C long term. Avoid freeze-thaw cycles.

www.novusbio.com



technical@novusbio.com

Protocols, Publications, Related Products, Reviews, Research Tools and Images at:
www.novusbio.com/NBP2-36749

Updated 12/2/2025 v.20.1

Earn rewards for product
reviews and publications.

Submit a publication at www.novusbio.com/publications

Submit a review at www.novusbio.com/reviews/destination/NBP2-36749



NBP2-36749

NIFK Antibody (CL2240) - BSA Free

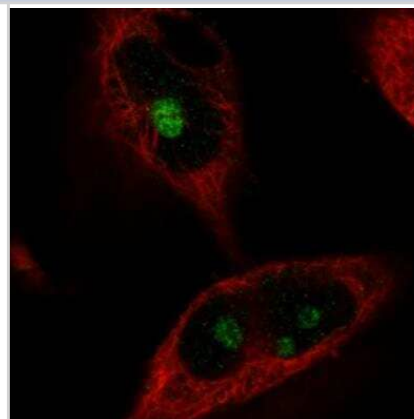
Product Information	
Unit Size	0.1 ml
Concentration	Concentrations vary lot to lot. See vial label for concentration. If unlisted please contact technical services.
Storage	Store at 4C short term. Aliquot and store at -20C long term. Avoid freeze-thaw cycles.
Clonality	Monoclonal
Clone	CL2240
Preservative	0.02% Sodium Azide
Isotype	IgG2a
Purity	Protein A purified
Buffer	PBS (pH 7.2) and 40% Glycerol

Product Description	
Description	Novus Biologicals Mouse NIFK Antibody (CL2240) - BSA Free (NBP2-36749) is a monoclonal antibody validated for use in IHC and ICC/IF. All Novus Biologicals antibodies are covered by our 100% guarantee.
Host	Mouse
Gene ID	84365
Gene Symbol	NIFK
Species	Human
Immunogen	This antibody was developed using a recombinant protein derived from Q9BYG3, with the exact immunogen sequence remaining proprietary.

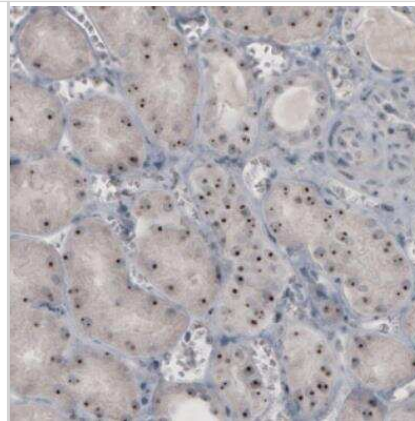
Product Application Details	
Applications	Immunohistochemistry-Paraffin, Immunocytochemistry/ Immunofluorescence, Immunohistochemistry
Recommended Dilutions	Immunohistochemistry 1:200 - 1:500, Immunocytochemistry/ Immunofluorescence 2-10 ug/ml, Immunohistochemistry-Paraffin 1:200 - 1:500
Application Notes	For IHC-Paraffin, HIER pH 6 retrieval is recommended. ICC/IF Fixation Permeabilization: Use PFA/Triton X-100.

Images

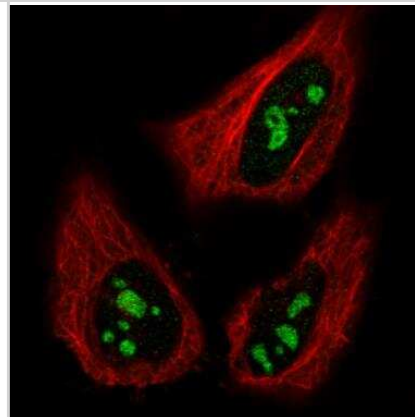
Immunocytochemistry/Immunofluorescence: NIFK Antibody (CL2240) [NBP2-36749] - Staining in U251 cell line showing specific staining of nucleoli in green. Microtubule-staining and nuclear probes are visualized in red and blue respectively (where available). Antibody staining is shown in green.



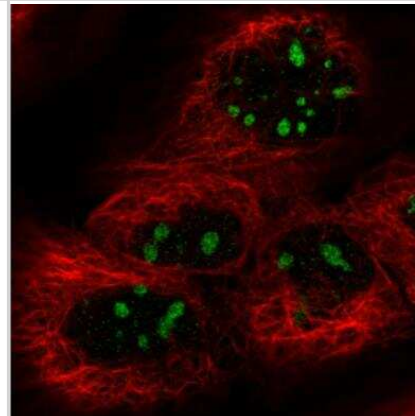
Immunohistochemistry: NIFK Antibody (CL2240) [NBP2-36749] - Staining of human kidney shows strong nucleolar positivity in renal tubules.



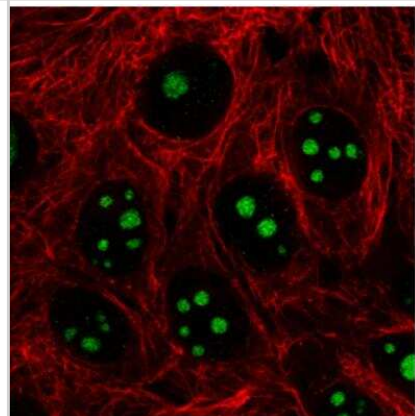
Immunocytochemistry/Immunofluorescence: NIFK Antibody (CL2240) [NBP2-36749] - Staining in HeLa cell line showing specific staining of nucleoli in green. Microtubule-staining and nuclear probes are visualized in red and blue respectively (where available). Antibody staining is shown in green.



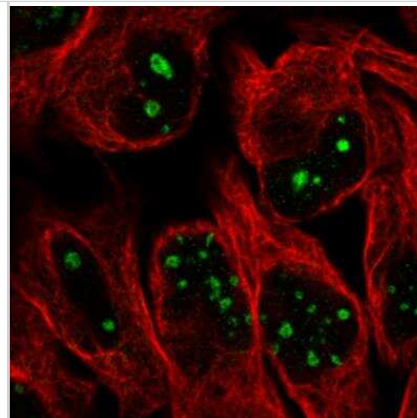
Immunocytochemistry/Immunofluorescence: NIFK Antibody (CL2240) [NBP2-36749] - Staining of human cell line A431 showing specific staining of nucleoli in green. Microtubule-staining and nuclear probes are visualized in red and blue respectively (where available). Antibody staining is shown in green.



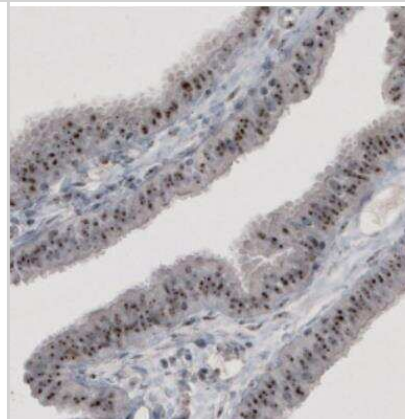
Immunocytochemistry/Immunofluorescence: NIFK Antibody (CL2240) [NBP2-36749] - Staining in MCF7 cell line showing specific staining of nucleoli in green. Microtubule-staining and nuclear probes are visualized in red and blue respectively (where available). Antibody staining is shown in green.



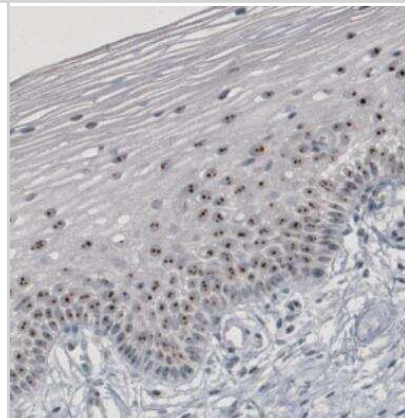
Immunocytochemistry/Immunofluorescence: NIFK Antibody (CL2240) [NBP2-36749] - Staining in U2OS cell line with Anti-MKI67IP monoclonal antibody, showing specific staining of nucleoli in green. Microtubule-staining and nuclear probes are visualized in red and blue respectively (where available). Antibody staining is shown in green.



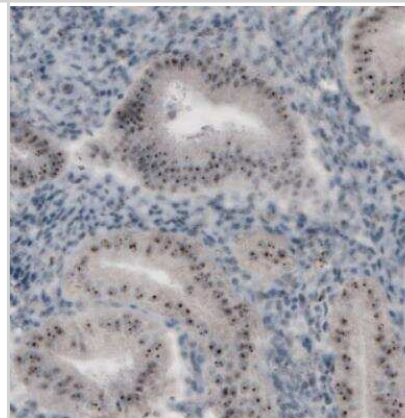
Immunohistochemistry: NIFK Antibody (CL2240) [NBP2-36749] - Staining of human fallopian tube shows strong nucleolar immunoreactivity in glandular and connective tissue cells.



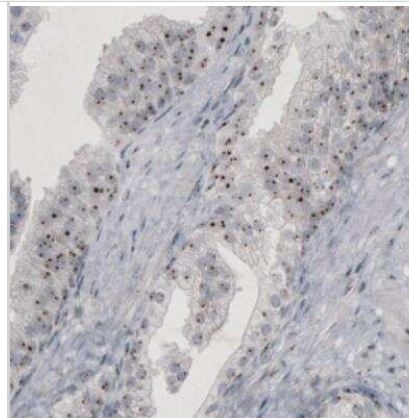
Immunohistochemistry: NIFK Antibody (CL2240) [NBP2-36749] - Staining of human cervix shows strong nucleolar positivity in the epithelial cells.



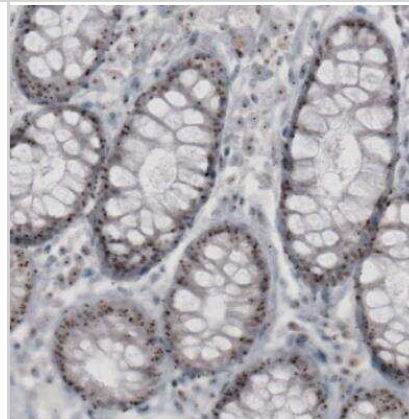
Immunohistochemistry: NIFK Antibody (CL2240) [NBP2-36749] - Staining of human endometrium shows nucleolar immunoreactivity in glandular cells.



Immunohistochemistry: NIFK Antibody (CL2240) [NBP2-36749] - Staining of human prostate shows strong nucleolar positivity in glandular cells.



Immunohistochemistry: NIFK Antibody (CL2240) [NBP2-36749] - Staining of human rectum shows nucleolar immunoreactivity in glandular and lamina propria cells.





Novus Biologicals USA

10730 E. Briarwood Avenue
Centennial, CO 80112
USA
Phone: 303.730.1950
Toll Free: 1.888.506.6887
Fax: 303.730.1966
nb-customerservice@bio-techne.com

Bio-Techne Canada

21 Canmotor Ave
Toronto, ON M8Z 4E6
Canada
Phone: 905.827.6400
Toll Free: 855.668.8722
Fax: 905.827.6402
canada.inquires@bio-techne.com

Bio-Techne Ltd

19 Barton Lane
Abingdon Science Park
Abingdon, OX14 3NB, United Kingdom
Phone: (44) (0) 1235 529449
Free Phone: 0800 37 34 15
Fax: (44) (0) 1235 533420
info.EMEA@bio-techne.com

General Contact Information

www.novusbio.com
Technical Support: nb-technical@bio-techne.com
Orders: nb-customerservice@bio-techne.com
General: novus@novusbio.com

Products Related to NBP2-36749

NBP2-36749PEP	NIFK Recombinant Protein Antigen
HAF007	Goat anti-Mouse IgG Secondary Antibody [HRP]
NB7539	Goat anti-Mouse IgG (H+L) Secondary Antibody [HRP]
NBP1-96778	Mouse IgG2a Isotype Control (M2A)

Limitations

This product is for research use only and is not approved for use in humans or in clinical diagnosis. Primary Antibodies are guaranteed for 1 year from date of receipt.

For more information on our 100% guarantee, please visit www.novusbio.com/guarantee

Earn gift cards/discounts by submitting a review: www.novusbio.com/reviews/submit/NBP2-36749

Earn gift cards/discounts by submitting a publication using this product:
www.novusbio.com/publications

