

Product Datasheet

Glypican 3 Antibody - BSA Free NBP2-36558

Unit Size: 100ul

Store at 4C short term. Aliquot and store at -20C long term. Avoid freeze-thaw cycles.

www.novusbio.com



technical@novusbio.com

Protocols, Publications, Related Products, Reviews, Research Tools and Images at:
www.novusbio.com/NBP2-36558

Updated 9/9/2025 v.20.1

Earn rewards for product
reviews and publications.

Submit a publication at www.novusbio.com/publications

Submit a review at www.novusbio.com/reviews/destination/NBP2-36558



NBP2-36558

Glypican 3 Antibody - BSA Free

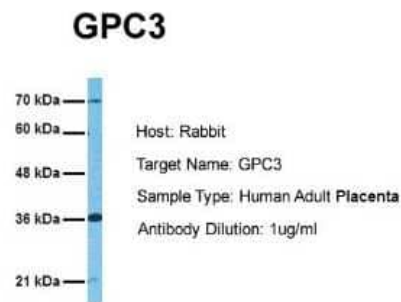
Product Information	
Unit Size	100ul
Concentration	1 mg/ml
Storage	Store at 4C short term. Aliquot and store at -20C long term. Avoid freeze-thaw cycles.
Clonality	Polyclonal
Preservative	0.09% Sodium Azide
Isotype	IgG
Purity	Protein A purified
Buffer	PBS, 2% Sucrose
Target Molecular Weight	64 kDa

Product Description	
Description	Novus Biologicals Rabbit Glypican 3 Antibody - BSA Free (NBP2-36558) is a polyclonal antibody validated for use in IHC and WB. All Novus Biologicals antibodies are covered by our 100% guarantee.
Host	Rabbit
Gene ID	2719
Gene Symbol	GPC3
Species	Human
Immunogen	The immunogen for Glypican 3 antibody: synthetic peptide directed towards the middle region of human Glypican 3. Peptide sequence: FSTIHDSIQYVQKNAGKLT TTTIGKLCAHSQQRQYRSAYYPEDLFIDKKVL The peptide sequence for this immunogen was taken from within the described region.

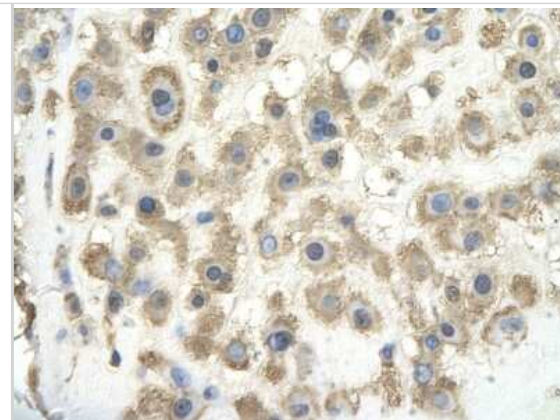
Product Application Details	
Applications	Western Blot, Immunohistochemistry-Paraffin, Immunohistochemistry
Recommended Dilutions	Western Blot 1.0 ug/ml, Immunohistochemistry 4.0 - 8.0 ug/ml, Immunohistochemistry-Paraffin

Images

Western Blot: Glypican 3 Antibody [NBP2-36558] - Host: Rabbit. Target Name: GPC3. Sample Tissue: Human Adult Placenta. Antibody Dilution: 1.0ug/ml

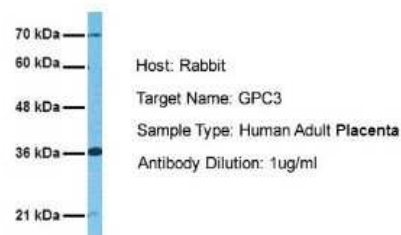


Immunohistochemistry: Glypican 3 Antibody [NBP2-36558] - Paraffin Embedded Tissue: Human Placenta cell Cellular Data: Epithelial cells of renal tubule Antibody Concentration: 4.0 - 8.0 ug/ml Magnification: 400X

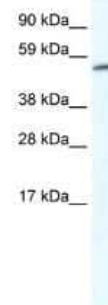


Western Blot: Glypican 3 Antibody [NBP2-36558] - Sample Tissue: Human Adult Placenta Antibody Dilution: 1.0 ug/ml

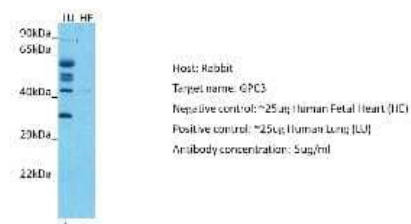
GPC3



Western Blot: Glypican 3 Antibody [NBP2-36558] - Recommended Titration: 2.5 ug/ml ELISA Titer: 1:1562500 Positive Control: Human Placenta



Western Blot: Glypican 3 Antibody [NBP2-36558] - Host: Rabbit. Target: GPC3. Positive control (+): Human lung (LU). Negative control (-): Human heart (HE). Antibody concentration: 1ug/ml





Novus Biologicals USA

10730 E. Briarwood Avenue
Centennial, CO 80112
USA
Phone: 303.730.1950
Toll Free: 1.888.506.6887
Fax: 303.730.1966
nb-customerservice@bio-techne.com

Bio-Techne Canada

21 Canmotor Ave
Toronto, ON M8Z 4E6
Canada
Phone: 905.827.6400
Toll Free: 855.668.8722
Fax: 905.827.6402
canada.inquires@bio-techne.com

Bio-Techne Ltd

19 Barton Lane
Abingdon Science Park
Abingdon, OX14 3NB, United Kingdom
Phone: (44) (0) 1235 529449
Free Phone: 0800 37 34 15
Fax: (44) (0) 1235 533420
info.EMEA@bio-techne.com

General Contact Information

www.novusbio.com
Technical Support: nb-technical@bio-techne.com
Orders: nb-customerservice@bio-techne.com
General: novus@novusbio.com

Products Related to NBP2-36558

NBP2-33376H	Blue Marker Antibody (6F4-F6) [HRP]
HAF008	Goat anti-Rabbit IgG Secondary Antibody [HRP]
NB7160	Goat anti-Rabbit IgG (H+L) Secondary Antibody [HRP]
NBP2-24891	Rabbit IgG Isotype Control

Limitations

This product is for research use only and is not approved for use in humans or in clinical diagnosis. Primary Antibodies are guaranteed for 1 year from date of receipt.

For more information on our 100% guarantee, please visit www.novusbio.com/guarantee

Earn gift cards/discounts by submitting a review: www.novusbio.com/reviews/submit/NBP2-36558

Earn gift cards/discounts by submitting a publication using this product:
www.novusbio.com/publications

