

Product Datasheet

S100A4 Antibody (1C4) - BSA Free NBP2-36431

Unit Size: 0.1 mg

Store at 4C short term. Aliquot and store at -20C long term. Avoid freeze-thaw cycles.

www.novusbio.com



technical@novusbio.com

Publications: 2

Protocols, Publications, Related Products, Reviews, Research Tools and Images at:
www.novusbio.com/NBP2-36431

Updated 9/9/2025 v.20.1

Earn rewards for product
reviews and publications.

Submit a publication at www.novusbio.com/publications

Submit a review at www.novusbio.com/reviews/destination/NBP2-36431



NBP2-36431

S100A4 Antibody (1C4) - BSA Free

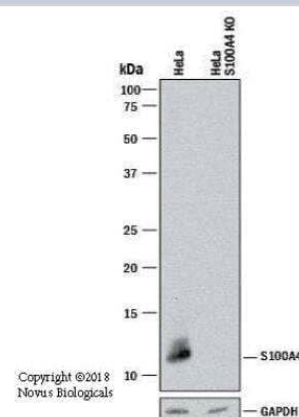
Product Information	
Unit Size	0.1 mg
Concentration	1.0 mg/ml
Storage	Store at 4C short term. Aliquot and store at -20C long term. Avoid freeze-thaw cycles.
Clonality	Monoclonal
Clone	1C4
Preservative	0.05% Sodium Azide
Isotype	IgG2b Lambda
Purity	Protein G purified
Buffer	PBS
Target Molecular Weight	11.7 kDa

Product Description	
Description	Novus Biologicals Knockout (KO) Validated Mouse S100A4 Antibody (1C4) - BSA Free (NBP2-36431) is a monoclonal antibody validated for use in IHC, WB, Flow and ICC/IF. Anti-S100A4 Antibody: Cited in 2 publications. All Novus Biologicals antibodies are covered by our 100% guarantee.
Host	Mouse
Gene ID	6275
Gene Symbol	S100A4
Species	Human
Immunogen	Partial recombinant human S100A4 protein (between amino acids 1-200) [UniProt P26447].

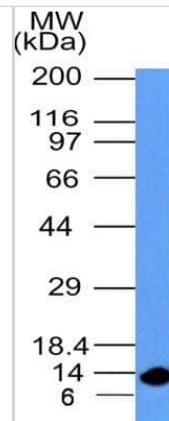
Product Application Details	
Applications	Western Blot, Immunohistochemistry-Paraffin, Flow Cytometry, Immunocytochemistry/ Immunofluorescence, Immunohistochemistry, Knockout Validated
Recommended Dilutions	Western Blot 1.0 ug/ml, Flow Cytometry, Immunohistochemistry 5 ug/ml, Immunocytochemistry/ Immunofluorescence 1:50 - 1:100, Immunohistochemistry-Paraffin 5 ug/ml, Knockout Validated

Images

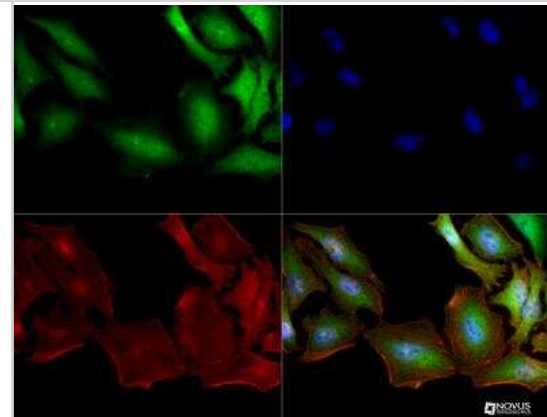
Western Blot: S100A4 Antibody (1C4) [NBP2-36431] - Western blot shows lysates of HeLa human cervical epithelial carcinoma parental cell line and S100A4 knockout (KO) HeLa cell line. PVDF membrane was probed with Mouse Anti-Human S100A4 Monoclonal Antibody (Catalog # NBP2-36431) followed by HRP-conjugated Anti-Rabbit IgG Secondary Antibody (Catalog #HAF008). Specific band was detected for S100A4 at approximately 12 kDa (as indicated) in the parental HeLa cell line, but is not detectable in the knockout HeLa cell line. This experiment was conducted under reducing conditions.



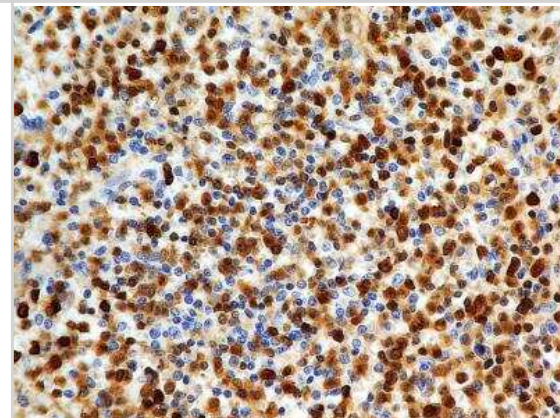
Western Blot: S100A4 Antibody (1C4) [NBP2-36431] - WB analysis of S100A4 recombinant protein with S100A4 antibody (clone 1C4) at 0.5 ug/ml concentration.



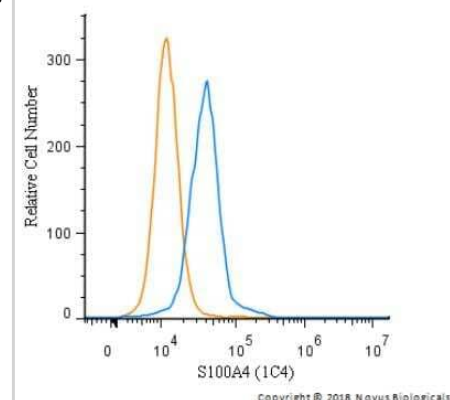
Immunocytochemistry/Immunofluorescence: S100A4 Antibody (1C4) [NBP2-36431] - S100A4 (1C4) antibody was tested in HeLa cells with Dylight 488 (green). Nuclei and alpha-tubulin were counterstained with DAPI (blue) and Dylight 550 (red).



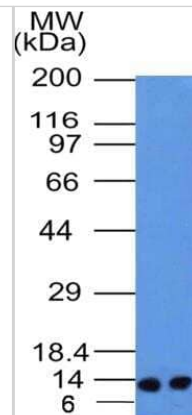
Immunohistochemistry-Paraffin: S100A4 Antibody (1C4) [NBP2-36431] - Analysis of tissue section of normal human spleen with mouse monoclonal S100A4 antibody (clone 1C4) at 5 ug/ml concentration.



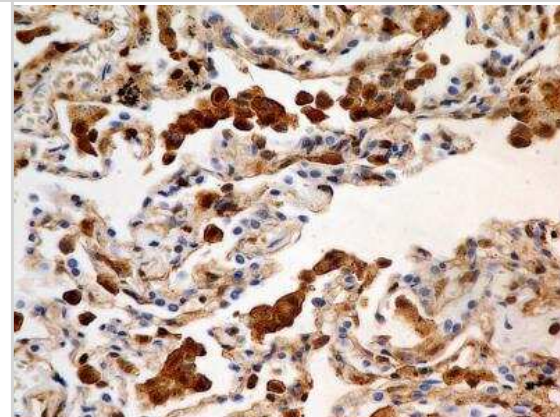
Flow Cytometry: S100A4 Antibody (1C4) [NBP2-36431] - An intracellular stain was performed on THP-1 cells with S100A4 (1C4) Antibody NBP2-36431 and a matched isotype control. Cells were fixed with 4% PFA and then permeabilized with 0.1% saponin. Cells were incubated in an antibody dilution of 5.0 ug/mL for 30 minutes at room temperature, followed by Rabbit IgG (H+L) Cross-Adsorbed Secondary Antibody, Dylight 550.



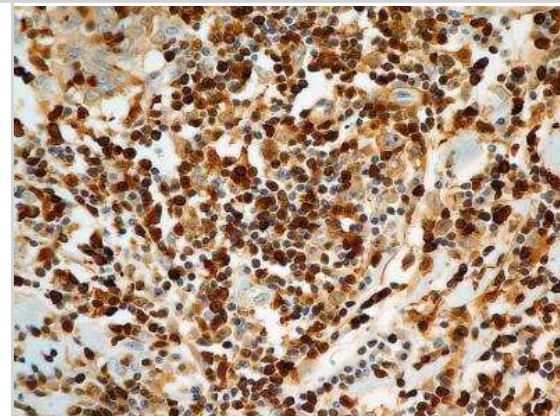
Western Blot: S100A4 Antibody (1C4) [NBP2-36431] - WB analysis of S100A4 in lysates of A375 and A549 cell lines with S100A4 antibody (clone 1C4). The antibody detected the endogenous protein at its expected molecular weight position 11.7 kDa.



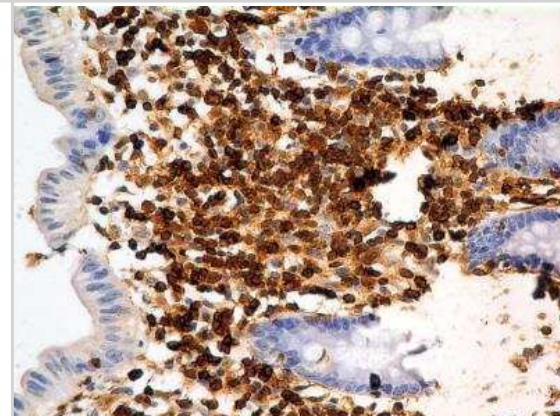
Immunohistochemistry-Paraffin: S100A4 Antibody (1C4) [NBP2-36431] - Analysis of tissue section of human normal lung with mouse monoclonal S100A4 antibody (clone 1C4) at 5 ug/ml concentration. Majority of the cells of respiratory alveoli showed the cytoplasmic staining whereas some clusters of cells (lymphocytes, macrophages) developed nuclear staining also.



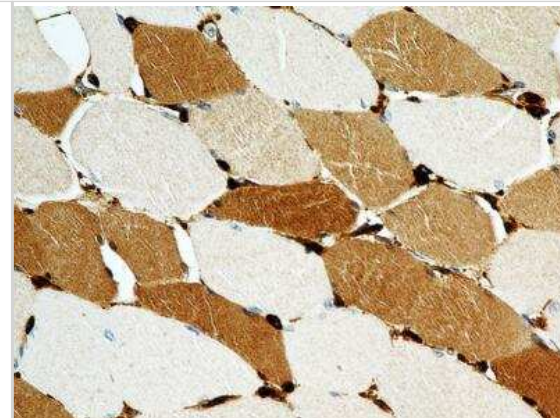
Immunohistochemistry-Paraffin: S100A4 Antibody (1C4) [NBP2-36431] - Analysis of tissue section of Squamous Cell Carcinoma of Human Lungs with mouse monoclonal S100A4 antibody (clone 1C4) at 5 ug/ml concentration. An expected cytoplasmic as well as nuclear staining was observed in the tissue and the staining was found to be more intense in several cells which are potentially the advanced cancer cells, lymphocytes or infiltrating macrophages.



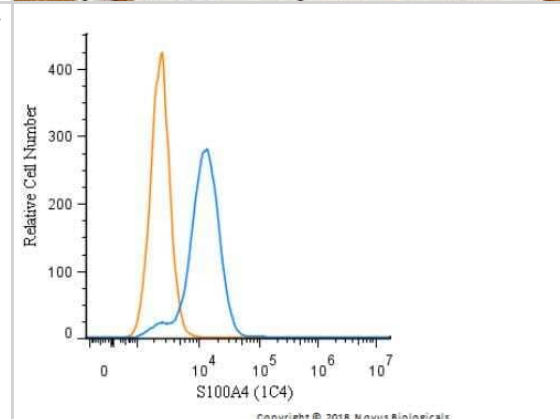
Immunohistochemistry-Paraffin: S100A4 Antibody (1C4) [NBP2-36431] - Analysis of tissue section of human colon with mouse monoclonal S100A4 antibody (clone 1C4) at 5 ug/ml concentration. The columnar epithelial cells showed weak to negligible immunopositivity whereas the cells present in lamina propria, the loose cellular connective tissue in mucosa, developed intense staining in various type of cells.



Immunohistochemistry-Paraffin: S100A4 Antibody (1C4) [NBP2-36431] - Analysis of tissue section of normal human skeletal muscle with mouse monoclonal S100A4 antibody (clone 1C4) at 5 ug/ml concentration. The different myocytes showed a varying degree of cytoplasmic immunopositivity whereas the staining was found to be intense in some of the peripherally placed nuclei.



Flow Cytometry: S100A4 Antibody (1C4) [NBP2-36431] - An intracellular stain was performed on HeLa cells with S100A4 (1C4) Antibody NBP2-36431 and a matched isotype control. Cells were fixed with 4% PFA and then permeabilized with 0.1% saponin. Cells were incubated in an antibody dilution of 5.0 ug/mL for 30 minutes at room temperature, followed by Rabbit IgG (H+L) Cross-Adsorbed Secondary Antibody, Dylight 550.



Publications

Sulaiman R, De P, Aske JC et al. Characterization and Clinical Relevance of Endometrial CAFs: Correlation between Post-Surgery Event and Resistance to Drugs International journal of molecular sciences 2023-03-29 [PMID: 37047422] (FLOW, Human)

Chiarelli N, Zoppi N, Ritelli M et al. Biological insights in the pathogenesis of hypermobile Ehlers-Danlos syndrome from proteome profiling of patients' dermal myofibroblasts Biochimica et biophysica acta. Molecular basis of disease 2020-12-28 [PMID: 33383104] (WB, Human)



Novus Biologicals USA

10730 E. Briarwood Avenue
Centennial, CO 80112
USA
Phone: 303.730.1950
Toll Free: 1.888.506.6887
Fax: 303.730.1966
nb-customerservice@bio-techne.com

Bio-Techne Canada

21 Canmotor Ave
Toronto, ON M8Z 4E6
Canada
Phone: 905.827.6400
Toll Free: 855.668.8722
Fax: 905.827.6402
canada.inquires@bio-techne.com

Bio-Techne Ltd

19 Barton Lane
Abingdon Science Park
Abingdon, OX14 3NB, United Kingdom
Phone: (44) (0) 1235 529449
Free Phone: 0800 37 34 15
Fax: (44) (0) 1235 533420
info.EMEA@bio-techne.com

General Contact Information

www.novusbio.com
Technical Support: nb-technical@bio-techne.com
Orders: nb-customerservice@bio-techne.com
General: novus@novusbio.com

Products Related to NBP2-36431

NBP2-33376H	Blue Marker Antibody (6F4-F6) [HRP]
HAF007	Goat anti-Mouse IgG Secondary Antibody [HRP]
NB7539	Goat anti-Mouse IgG (H+L) Secondary Antibody [HRP]
NBP1-72326-0.1mg	Recombinant Mouse S100A4 His Protein

Limitations

This product is for research use only and is not approved for use in humans or in clinical diagnosis. Primary Antibodies are guaranteed for 1 year from date of receipt.

For more information on our 100% guarantee, please visit www.novusbio.com/guarantee

Earn gift cards/discounts by submitting a review: www.novusbio.com/reviews/submit/NBP2-36431

Earn gift cards/discounts by submitting a publication using this product:
www.novusbio.com/publications

