

# Product Datasheet

## Recombinant Protein L Type 1 His (N-Term) Cys (C-Term) Protein NBP2-35050

Unit Size: 1 mg

Store at -20 to -70C as supplied. After reconstitution, store at 2 to 8C for 1 month and at -20 to -70C for long term storage. Avoid repeated freeze-thaw cycles.

[www.novusbio.com](http://www.novusbio.com)



[technical@novusbio.com](mailto:technical@novusbio.com)

Protocols, Publications, Related Products, Reviews, Research Tools and Images at:  
[www.novusbio.com/NBP2-35050](http://www.novusbio.com/NBP2-35050)

Updated 1/25/2025 v.20.1

Earn rewards for product  
reviews and publications.

Submit a publication at [www.novusbio.com/publications](http://www.novusbio.com/publications)

Submit a review at [www.novusbio.com/reviews/destination/NBP2-35050](http://www.novusbio.com/reviews/destination/NBP2-35050)



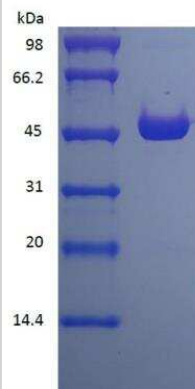
**NBP2-35050**

## Recombinant Protein L Type 1 His (N-Term) Cys (C-Term) Protein

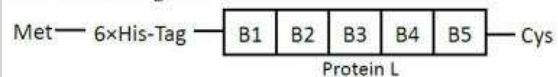
Product Information	
Unit Size	1 mg
Concentration	Lyoph
Storage	Store at -20 to -70C as supplied. After reconstitution, store at 2 to 8C for 1 month and at -20 to -70C for long term storage. Avoid repeated freeze-thaw cycles.
Preservative	No Preservative
Reconstitution Instructions	Reconstitute with distilled water or saline.
Purity	>95%, by SDS-PAGE
Buffer	Lyophilized from additive free solution.
Target Molecular Weight	41.6 kDa
Product Description	
Description	<p>A single non-glycosylated polypeptide chain containing 373 amino acids corresponding to Protein L Type 1 with a His tag on the N-terminus and a Cys on the C-terminus. However it migrates with an apparent molecular mass of 46 kDa in SDS-PAGE <b>Source:</b> <i>E. coli</i></p> <p><b>Uniprot ID:</b> D6S9W1</p> <p><b>Amino Acid Sequence:</b> <i>MHHHHHKEE TPETPETDSE EEVTIKANLI FANGSTQTAE FKGTFEKATS EAYAYADTLK KDNGEYTVDV ADKGYTLNIK FAGKEKTPEE PKEEVTIKAN LIYADGKTQT AEFKGTFE EA TAEAYRYADA LKKDNGEYTV DVADKGYTLN IKFAGKEKTP EEPKEEVTIK ANLIYADGKT QTAEFKGTFE EATAEAYRYA DLLAKENGKY TVDVADKGYT LNIKFAGKEK TPEEPKEEVT IKANLIYADG KTQTAEFKGT FAEATAEAYR YADLLAKENG KYTADLEDGG YTINIRFAGK KVDEKPEEKE QVTIKENIYF EDGTVQTATF KGTFAEATAE AYRYADLLSK EHGKYTADLE DGGYTINIRF AGC</i></p>
Specificity/Sensitivity	Protein L binds to human, mouse, rat and pig IgG.
Details of Functionality	Protein L is a genetically engineered protein containing 5 IgG-binding regions of protein L. Cell wall binding region, cell membrane binding region and albumin binding region have been removed from the recombinant Protein L to ensure the maximum specific IgG binding. Protein L binds to human, mouse, rat and pig IgG.
Endotoxin Note	Less than 0.1 EU/ug of Protein L Type 1 as determined by LAL method.
Product Application Details	
Applications	SDS-Page, Bioactivity
Recommended Dilutions	SDS-Page, Bioactivity

**Images**

SDS-Page: Protein L Type 1 Cys (C-Term), His (N-Term) Protein [NBP2-35050]



Protein L Type 1 Cys (C-Term), His (N-Term) Protein [NBP2-35050]

**Schematic Diagram:**



### **Novus Biologicals USA**

10730 E. Briarwood Avenue  
Centennial, CO 80112  
USA  
Phone: 303.730.1950  
Toll Free: 1.888.506.6887  
Fax: 303.730.1966  
nb-customerservice@bio-techne.com

### **Bio-Techne Canada**

21 Canmotor Ave  
Toronto, ON M8Z 4E6  
Canada  
Phone: 905.827.6400  
Toll Free: 855.668.8722  
Fax: 905.827.6402  
canada.inquires@bio-techne.com

### **Bio-Techne Ltd**

19 Barton Lane  
Abingdon Science Park  
Abingdon, OX14 3NB, United Kingdom  
Phone: (44) (0) 1235 529449  
Free Phone: 0800 37 34 15  
Fax: (44) (0) 1235 533420  
info.EMEA@bio-techne.com

### **General Contact Information**

www.novusbio.com  
Technical Support: nb-technical@bio-techne.com  
Orders: nb-customerservice@bio-techne.com  
General: novus@novusbio.com

### **Products Related to NBP2-35050**

---

NBP2-35049	Recombinant Protein L Type 1 Protein
------------	--------------------------------------

---

### **Limitations**

This product is for research use only and is not approved for use in humans or in clinical diagnosis. Peptides and proteins are guaranteed for 3 months from date of receipt.

For more information on our 100% guarantee, please visit [www.novusbio.com/guarantee](http://www.novusbio.com/guarantee)

Earn gift cards/discounts by submitting a review: [www.novusbio.com/reviews/submit/NBP2-35050](http://www.novusbio.com/reviews/submit/NBP2-35050)

Earn gift cards/discounts by submitting a publication using this product:  
[www.novusbio.com/publications](http://www.novusbio.com/publications)

