

Product Datasheet

Recombinant Protein L Type 1 His (N-Term) Protein NBP2-35045

Unit Size: 1 mg

Store at -20 to -70C as supplied. After reconstitution, store at 2 to 8C for 1 month and at -20 to -70C for long term storage. Avoid repeated freeze-thaw cycles.

www.novusbio.com



technical@novusbio.com

Protocols, Publications, Related Products, Reviews, Research Tools and Images at:
www.novusbio.com/NBP2-35045

Updated 1/25/2025 v.20.1

Earn rewards for product
reviews and publications.

Submit a publication at www.novusbio.com/publications

Submit a review at www.novusbio.com/reviews/destination/NBP2-35045



NBP2-35045

Recombinant Protein L Type 1 His (N-Term) Protein

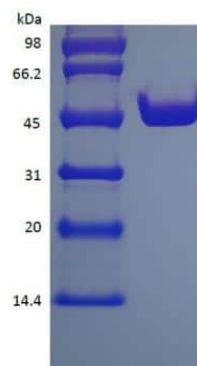
Product Information	
Unit Size	1 mg
Concentration	Lyoph
Storage	Store at -20 to -70C as supplied. After reconstitution, store at 2 to 8C for 1 month and at -20 to -70C for long term storage. Avoid repeated freeze-thaw cycles.
Preservative	No Preservative
Reconstitution Instructions	Reconstitute with distilled water or saline.
Purity	> 97 % pure by SDS-PAGE and HPLC
Buffer	Lyophilized from additive free solution.
Target Molecular Weight	41.5 kDa

Product Description	
Description	<p>A single non-glycosylated polypeptide chain containing 372 amino acids corresponding to Protein L Type 1 with a His tag on the N-terminus. However it migrates with an apparent molecular mass of 46 kDa in SDS-PAGE Source: <i>E. coli</i></p> <p>Uniprot ID: D6S9W1</p> <p>Amino Acid Sequence: <i>MHHHHHKEE TPETPETDSE EEVTIKANLI FANGSTQTAE FKGTFEKATS EAYAYADTLK KDNGEYTVDV ADKGYTLNIK FAGKEKTPEE PKEEVTIKAN LIYADGKTQT AEFKGTFE EA TAEAYRYADA LKKNGEYTV DVADKGYTLN IKFAGKEKTP EEPKEEVTIK ANLIYADGKT QTAEFKGTFE EATAEAYRYA DLLAKENGGY TVDVADKGYT LNIKFAGKEK TPEEPKEEVT IKANLIYADG KTQTAEFKGT FAEATAEAYR YADLLAKENG KYTADLEDGG YTINIRFAGK KVDEKPEEKE QVTIKENIYF EDGTVQTATF KGTFAEATAE AYRYADLLSK EHGKYTADLE DGGYTINIRF AG</i></p>
Specificity/Sensitivity	Protein L binds to human, mouse, rat and pig IgG.
Details of Functionality	Protein L is a genetically engineered protein containing 5 IgG-binding regions of protein L. Cell wall binding region, cell membrane binding region and albumin binding region have been removed from the recombinant Protein L to ensure the maximum specific IgG binding. Protein L binds to human, mouse, rat and pig IgG.
Endotoxin Note	Less than 0.1 EU/ug of Protein L Type 1 as determined by LAL method.

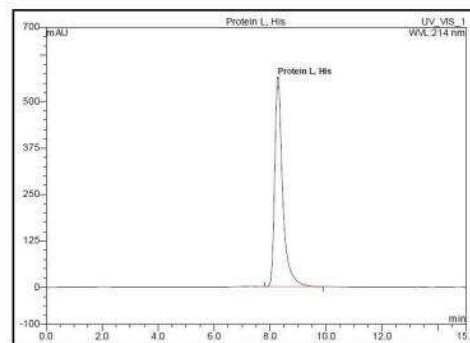
Product Application Details	
Applications	SDS-Page, Bioactivity
Recommended Dilutions	SDS-Page, Bioactivity

Images

SDS-Page: Protein L Type 1 His (N-Term) Protein [NBP2-35045]



HPLC: Recombinant Protein L Type 1 Protein [NBP2-35045] - Protein L Type 1 His (N-Term) Protein [NBP2-35045]

SEC-HPLC



Novus Biologicals USA

10730 E. Briarwood Avenue
Centennial, CO 80112
USA
Phone: 303.730.1950
Toll Free: 1.888.506.6887
Fax: 303.730.1966
nb-customerservice@bio-techne.com

Bio-Techne Canada

21 Canmotor Ave
Toronto, ON M8Z 4E6
Canada
Phone: 905.827.6400
Toll Free: 855.668.8722
Fax: 905.827.6402
canada.inquires@bio-techne.com

Bio-Techne Ltd

19 Barton Lane
Abingdon Science Park
Abingdon, OX14 3NB, United Kingdom
Phone: (44) (0) 1235 529449
Free Phone: 0800 37 34 15
Fax: (44) (0) 1235 533420
info.EMEA@bio-techne.com

General Contact Information

www.novusbio.com
Technical Support: nb-technical@bio-techne.com
Orders: nb-customerservice@bio-techne.com
General: novus@novusbio.com

Products Related to NBP2-35045

NBP2-35049	Recombinant Protein L Type 1 Protein
------------	--------------------------------------

Limitations

This product is for research use only and is not approved for use in humans or in clinical diagnosis. Peptides and proteins are guaranteed for 3 months from date of receipt.

For more information on our 100% guarantee, please visit www.novusbio.com/guarantee

Earn gift cards/discounts by submitting a review: www.novusbio.com/reviews/submit/NBP2-35045

Earn gift cards/discounts by submitting a publication using this product:
www.novusbio.com/publications

