

Product Datasheet

Kappa Light Chain Antibody (KLC709) - Azide and BSA Free NBP2-34660-0.1mg

Unit Size: 0.1 mg

Store at -20 to -80C. Avoid freeze-thaw cycles.

www.novusbio.com



technical@novusbio.com

Publications: 1

Protocols, Publications, Related Products, Reviews, Research Tools and Images at:
www.novusbio.com/NBP2-34660

Updated 4/13/2025 v.20.1

Earn rewards for product
reviews and publications.

Submit a publication at www.novusbio.com/publications

Submit a review at www.novusbio.com/reviews/destination/NBP2-34660



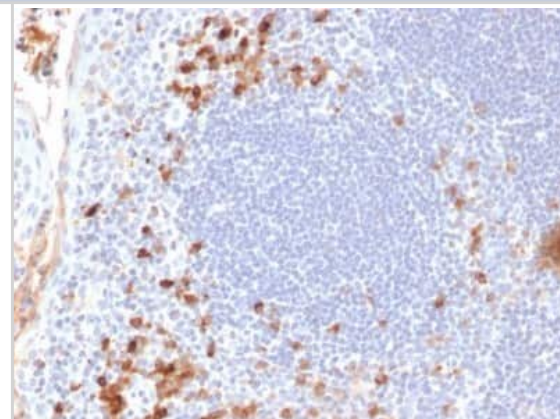
NBP2-34660-0.1mg

Kappa Light Chain Antibody (KLC709) - Azide and BSA Free

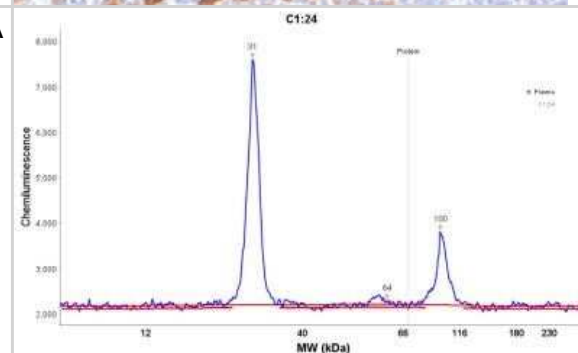
Product Information	
Unit Size	0.1 mg
Concentration	1.0 mg/ml
Storage	Store at -20 to -80C. Avoid freeze-thaw cycles.
Clonality	Monoclonal
Clone	KLC709
Preservative	No Preservative
Isotype	IgG1 Kappa
Purity	Protein A or G purified
Buffer	10 mM PBS
Target Molecular Weight	22.5 kDa
Product Description	
Description	1.0 mg/ml of antibody purified from Bioreactor Concentrate by Protein A/G. Prepared in 10mM PBS WITHOUT BSA & azide. Also available at 200 ug/ml WITH BSA & azide (NBP2-34259). Antibody with azide - store at 2 to 8C. Antibody without azide - store at -20 to -80C.
Host	Mouse
Gene ID	3514
Gene Symbol	IGKC
Species	Human
Marker	B-Cell Marker
Specificity/Sensitivity	This monoclonal antibody is specific to kappa light chain of immunoglobulin and shows no cross-reaction with lambda light chain or any of the five heavy chains. It recognizes human Ig kappa light chains of both secreted and cell surface immunoglobulin. It detects also free kappa light chains. In mammals, the two light chains in an antibody are always identical, with only one type of light chain, kappa or lambda. The ratio of Kappa to Lambda is 70:30. However, with the occurrence of multiple myeloma or other B-cell malignancies this ratio is disturbed. Antibody to the kappa light chain is reportedly useful in the identification of leukemias, plasmacytomas, and certain non-Hodgkins lymphomas. Demonstration of clonality in lymphoid infiltrates indicates that the infiltrate is malignant.
Immunogen	Recombinant full-length human Kappa Light Chain protein
Product Application Details	
Applications	Simple Western, Immunohistochemistry, Immunohistochemistry-Paraffin, Protein Array, CyTOF-ready
Recommended Dilutions	Simple Western, Immunohistochemistry, Immunohistochemistry-Paraffin, Protein Array, CyTOF-ready
Application Notes	Immunohistochemistry (Formalin-fixed): 1-2ug/ml for 30 min at RT. Staining of formalin-fixed tissues requires heating tissue sections in 10mM Tris with 1mM EDTA, pH 9.0, for 45 min at 95C followed by cooling at RT for 20 minutes. Optimal dilution for a specific application should be determined.

Images

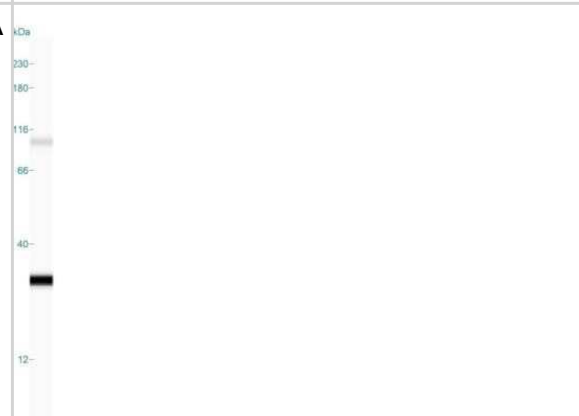
Immunohistochemistry-Paraffin: Kappa Light Chain Antibody (KLC709) - Azide and BSA Free [NBP2-34660] - Formalin-fixed, paraffin-embedded human Tonsil stained with Kappa Light Chain Antibody (KLC709).



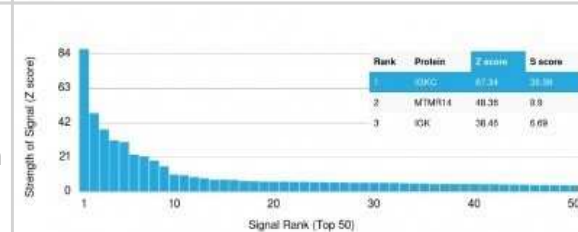
Simple Western: Kappa Light Chain Antibody (KLC709) - Azide and BSA Free [NBP2-34660] - Electropherogram image of the corresponding Simple Western lane. Kappa Light Chain antibody was used at 10 ug/ml dilution of H. Plasma lysates(s) respectively.



Simple Western: Kappa Light Chain Antibody (KLC709) - Azide and BSA Free [NBP2-34660] - Simple Western lane view shows a specific band for Kappa Light Chain in 0.2 mg/ml of H. Plasma lysate(s). This experiment was performed under reducing conditions using the 12-230 kDa separation system.



Protein Array: Kappa Light Chain Antibody (KLC709) - Azide and BSA Free [NBP2-34660] - Analysis of Protein Array containing more than 19,000 full-length human proteins using Kappa Light Chain Antibody (KLC709). Z- and S- Score: The Z-score represents the strength of a signal that a monoclonal antibody (Monoclonal Antibody) (in combination with a fluorescently-tagged anti-IgG secondary antibody) produces when binding to a particular protein on the HuProt(TM) array. Z-scores are described in units of standard deviations (SD's) above the mean value of all signals generated on that array. If targets on HuProt(TM) are arranged in descending order of the Z-score, the S-score is the difference (also in units of SD's) between the Z-score. S-score therefore represents the relative target specificity of a Monoclonal Antibody to its intended target. A Monoclonal Antibody is considered to specific to its intended target, if the Monoclonal Antibody has an S-score of at least 2.5.



Publications

Jang S, Song J, Kim N et al. Development of an antibody-like T-cell engager based on VH-VL heterodimer formation and its application in cancer therapy Biomaterials 2021-03-28 [PMID: 33774526] (Primate, Rat)

Details:

Citation using the Non-Recombinant Monoclonal format of this antibody.





Novus Biologicals USA

10730 E. Briarwood Avenue
Centennial, CO 80112
USA
Phone: 303.730.1950
Toll Free: 1.888.506.6887
Fax: 303.730.1966
nb-customerservice@bio-techne.com

Bio-Techne Canada

21 Canmotor Ave
Toronto, ON M8Z 4E6
Canada
Phone: 905.827.6400
Toll Free: 855.668.8722
Fax: 905.827.6402
canada.inquires@bio-techne.com

Bio-Techne Ltd

19 Barton Lane
Abingdon Science Park
Abingdon, OX14 3NB, United Kingdom
Phone: (44) (0) 1235 529449
Free Phone: 0800 37 34 15
Fax: (44) (0) 1235 533420
info.EMEA@bio-techne.com

General Contact Information

www.novusbio.com
Technical Support: nb-technical@bio-techne.com
Orders: nb-customerservice@bio-techne.com
General: novus@novusbio.com

Products Related to NBP2-34660-0.1mg

HAF007	Goat anti-Mouse IgG Secondary Antibody [HRP]
NB720-B	Rabbit anti-Mouse IgG (H+L) Secondary Antibody [Biotin]
NBP1-43319-0.5mg	Mouse IgG1 Kappa Isotype Control (P3.6.2.8.1)
H00003514-P01-10ug	Recombinant Human Kappa Light Chain GST (N-Term) Protein

Limitations

This product is for research use only and is not approved for use in humans or in clinical diagnosis. Primary Antibodies are guaranteed for 1 year from date of receipt.

For more information on our 100% guarantee, please visit www.novusbio.com/guarantee

Earn gift cards/discounts by submitting a review: www.novusbio.com/reviews/submit/NBP2-34660

Earn gift cards/discounts by submitting a publication using this product:
www.novusbio.com/publications

