

Product Datasheet

Lambda Light Chain Antibody (LcN-2 + ICO-106) NBP2-34236-0.1mg

Unit Size: 0.1 mg

Store at 4C.

www.novusbio.com



technical@novusbio.com

Reviews: 1

Protocols, Publications, Related Products, Reviews, Research Tools and Images at:
www.novusbio.com/NBP2-34236

Updated 10/23/2024 v.20.1

Earn rewards for product
reviews and publications.

Submit a publication at www.novusbio.com/publications

Submit a review at www.novusbio.com/reviews/destination/NBP2-34236



NBP2-34236-0.1mg

Lambda Light Chain Antibody (LcN-2 + ICO-106)

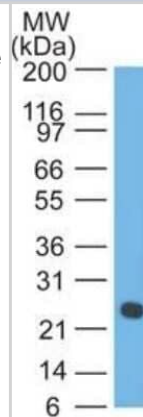
| Product Information | |
|-------------------------|--------------------------|
| Unit Size | 0.1 mg |
| Concentration | 0.2 mg/ml |
| Storage | Store at 4C. |
| Clonality | Monoclonal |
| Clone | LcN-2 + ICO-106 |
| Preservative | 0.05% Sodium Azide |
| Isotype | IgG1 Kappa/IgG2a Kappa |
| Purity | Protein A or G purified |
| Buffer | 10 mM PBS with 0.05% BSA |
| Target Molecular Weight | 22.5 kDa |

| Product Description | |
|-------------------------|---|
| Description | 200ug/ml of antibody purified from Bioreactor Concentrate by Protein A or G. Prepared in 10 mM PBS with 0.05% BSA & 0.05% azide. Also available WITHOUT BSA & azide at 1.0 mg/ml. (NBP2-34665) Antibody with azide - store at 2 to 8C. Antibody without azide - store at -20 to -80C. |
| Host | Mouse |
| Gene ID | 3537 |
| Gene Symbol | IGLC1 |
| Species | Human |
| Marker | B-Cell Marker |
| Specificity/Sensitivity | This monoclonal antibody is specific to lambda light chain of immunoglobulin and shows no cross-reaction with lambda light chain or any of the five heavy chains. In mammals, the two light chains in an antibody are always identical, with only one type of light chain, kappa or lambda. The ratio of Kappa to Lambda is 70:30. However, with the occurrence of multiple myeloma or other B-cell malignancies this ratio is disturbed. Antibody to the lambda light chain is reportedly useful in the identification of leukemias, plasmacytomas, and certain non-Hodgkins lymphomas. Demonstration of clonality in lymphoid infiltrates indicates that the infiltrate is malignant. |
| Immunogen | Purified human Lambda Light Chain (LcN-2 and ICO-106) |

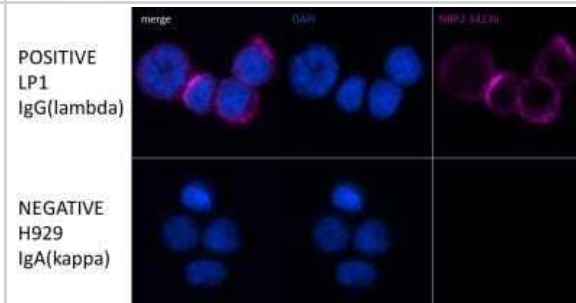
| Product Application Details | |
|-----------------------------|--|
| Applications | Western Blot, Flow Cytometry, Immunocytochemistry/ Immunofluorescence, Immunohistochemistry, Immunohistochemistry-Paraffin |
| Recommended Dilutions | Western Blot 1-2 ug/ml, Flow Cytometry 1-2 ug/million cells, Immunohistochemistry, Immunocytochemistry/ Immunofluorescence 1-2 ug/ml, Immunohistochemistry-Paraffin 0.5-1ug/ml |
| Application Notes | Optimal dilution for a specific application should be determined. |

Images

Western Blot: Lambda Light Chain Antibody (LcN-2 + ICO-106) [NBP2-34236] - Western blot analysis of Lambda Light Chain in human intestine using Lambda Light Chain Ab (LcN-2+ICO-106).



Immunocytochemistry/Immunofluorescence: Lambda Light Chain Antibody (LcN-2 + ICO-106) [NBP2-34236] - Staining of human LP-1 and H929 multiple myeloma cells. 1. Cells immersion-fixed in 2% PFA 10 minutes, wash PBS X 3 2. Permeabilized 0.5% Triton X-100 5 minutes; wash PBS X 3 3. Block 10% donkey serum 1 hour 4. 1/200 NBP2-34236 O/N at 4C; wash PBS X 3 5. 1/1000 donkey F(ab')₂ Alexa Fluor 647 anti-mouse IgG (H+L) 1 hour at room temperature and wash with PBS X 3. 6. Olympus/BIOVIEW Cy5 filter 600ms exposure. Image from a verified customer review.





Novus Biologicals USA

10730 E. Briarwood Avenue
Centennial, CO 80112
USA
Phone: 303.730.1950
Toll Free: 1.888.506.6887
Fax: 303.730.1966
nb-customerservice@bio-techne.com

Bio-Techne Canada

21 Canmotor Ave
Toronto, ON M8Z 4E6
Canada
Phone: 905.827.6400
Toll Free: 855.668.8722
Fax: 905.827.6402
canada.inquires@bio-techne.com

Bio-Techne Ltd

19 Barton Lane
Abingdon Science Park
Abingdon, OX14 3NB, United Kingdom
Phone: (44) (0) 1235 529449
Free Phone: 0800 37 34 15
Fax: (44) (0) 1235 533420
info.EMEA@bio-techne.com

General Contact Information

www.novusbio.com
Technical Support: nb-technical@bio-techne.com
Orders: nb-customerservice@bio-techne.com
General: novus@novusbio.com

Products Related to NBP2-34236-0.1mg

| | |
|---------|---|
| HAF007 | Goat anti-Mouse IgG Secondary Antibody [HRP] |
| NB720-B | Rabbit anti-Mouse IgG (H+L) Secondary Antibody [Biotin] |
| NB7552 | Goat anti-Mouse Lambda Light Chain Secondary Antibody [HRP] |

Limitations

This product is for research use only and is not approved for use in humans or in clinical diagnosis. Primary Antibodies are guaranteed for 1 year from date of receipt.

For more information on our 100% guarantee, please visit www.novusbio.com/guarantee

Earn gift cards/discounts by submitting a review: www.novusbio.com/reviews/submit/NBP2-34236

Earn gift cards/discounts by submitting a publication using this product:
www.novusbio.com/publications

