

# Product Datasheet

## Involucrin Antibody - BSA Free NBP2-33742

Unit Size: 0.1 ml

Store at 4C short term. Aliquot and store at -20C long term. Avoid freeze-thaw cycles.

[www.novusbio.com](http://www.novusbio.com)



[technical@novusbio.com](mailto:technical@novusbio.com)

**Reviews: 2**

Protocols, Publications, Related Products, Reviews, Research Tools and Images at:  
[www.novusbio.com/NBP2-33742](http://www.novusbio.com/NBP2-33742)

Updated 1/27/2026 v.20.1

**Earn rewards for product  
reviews and publications.**

Submit a publication at [www.novusbio.com/publications](http://www.novusbio.com/publications)

Submit a review at [www.novusbio.com/reviews/destination/NBP2-33742](http://www.novusbio.com/reviews/destination/NBP2-33742)



**NBP2-33742**

Involucrin Antibody - BSA Free

| Product Information |  |
|---------------------|--|
| Unit Size           | 0.1 ml   |
| Concentration       | Concentrations vary lot to lot. See vial label for concentration. If unlisted please contact technical services. |
| Storage             | Store at 4C short term. Aliquot and store at -20C long term. Avoid freeze-thaw cycles.                           |
| Clonality           | Polyclonal   |
| Preservative        | 0.02% Sodium Azide   |
| Isotype             | IgG  |
| Purity              | Affinity purified  |
| Buffer              | PBS (pH 7.2) and 40% Glycerol  |

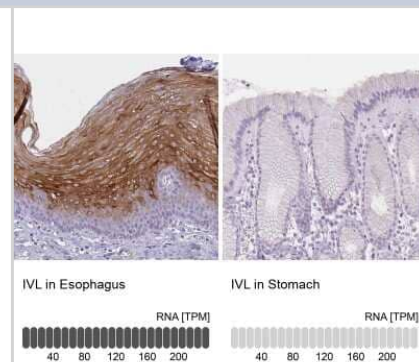
| Product Description |  |
|---------------------|--|
| Description         | Novus Biologicals Rabbit Involucrin Antibody - BSA Free (NBP2-33742) is a polyclonal antibody validated for use in IHC, ICC/IF and Simple Western. All Novus Biologicals antibodies are covered by our 100% guarantee. |
| Host                | Rabbit   |
| Gene ID             | 3713   |
| Gene Symbol         | IVL  |
| Species             | Human  |
| Immunogen           | This antibody was developed against a recombinant protein corresponding to amino acids:<br>QQHTLPVTLSPALSQELLKTVPPPVNTHQE QMKQPTPLPPPCQKVPVELPVEV<br>PSKQEEKHMTAVKGLPEQECEQ  |

| Product Application Details |  |
|-----------------------------|--|
| Applications                | Simple Western, Immunohistochemistry-Paraffin, Immunocytochemistry/ Immunofluorescence, Immunohistochemistry   |
| Recommended Dilutions       | Simple Western 1:50, Immunohistochemistry 1:500 - 1:1000, Immunocytochemistry/ Immunofluorescence 0.25 - 2 ug/mL, Immunohistochemistry-Paraffin 1:500 - 1:1000   |
| Application Notes           | IHC-Paraffin, HIER pH 6 retrieval is recommended. ICC/IF, Fixation Permeabilization: Use PFA/Triton X-100. See <a href="#">Simple Western Antibody Database</a> for Simple Western validation: Tested in Human HaCaT cells, separated by Size, antibody dilution of 1:50 |

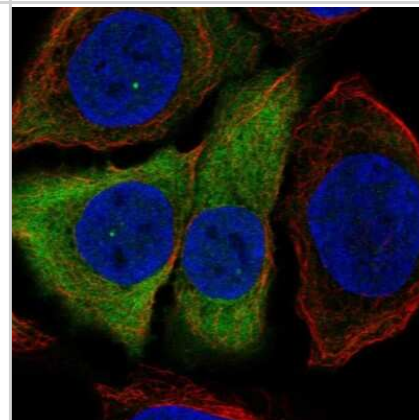


## Images

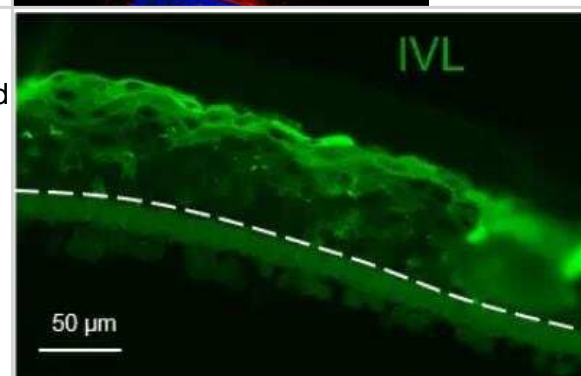
Immunohistochemistry-Paraffin: Involucrin Antibody [NBP2-33742] - Staining in human esophagus and stomach tissues. Corresponding IVL RNA-seq data are presented for the same tissues.



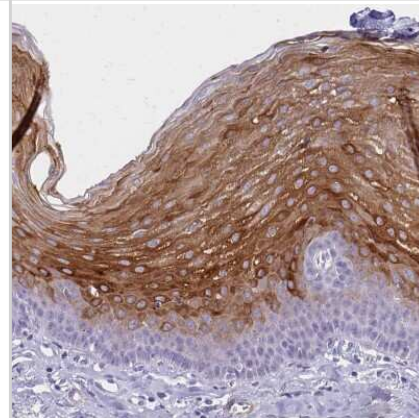
Immunocytochemistry/Immunofluorescence: Involucrin Antibody [NBP2-33742] - Staining of human cell line HaCaT shows localization to nuclear bodies, cytosol & centrosome. Antibody staining is shown in green.



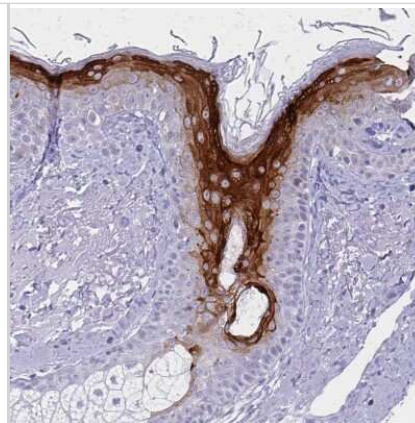
Immunohistochemistry-Paraffin: Involucrin Antibody [NBP2-33742] - Reconstructed human epidermis tissues are embedded in paraffin. Antigen retrieval: citrate. Antibody dilution: 1:100. IHC-P image submitted by a verified customer review.



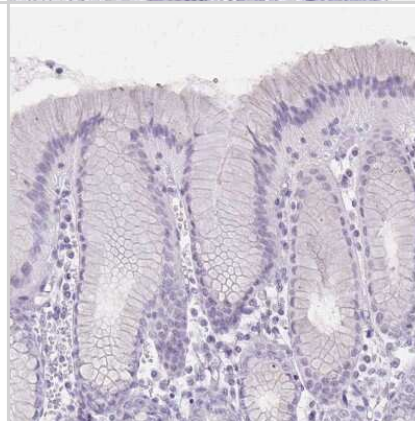
Immunohistochemistry-Paraffin: Involucrin Antibody [NBP2-33742] - Staining of human esophagus shows moderate to strong cytoplasmic positivity in squamous epithelial cells.



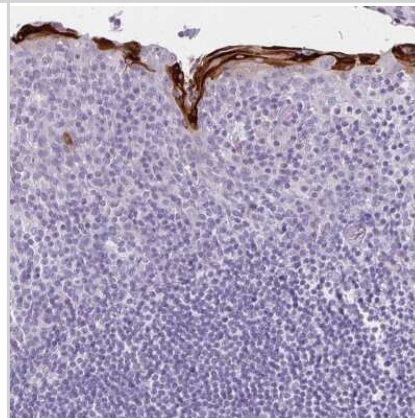
Immunohistochemistry-Paraffin: Involucrin Antibody [NBP2-33742] - Staining of human skin shows moderate to strong cytoplasmic positivity in keratinocytes.



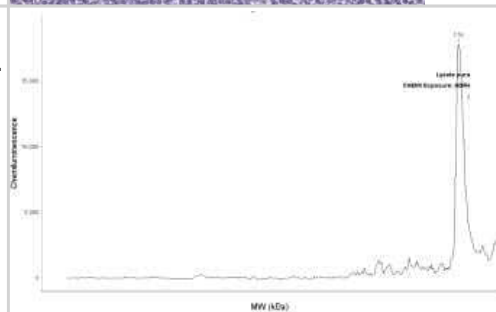
Immunohistochemistry-Paraffin: Involucrin Antibody [NBP2-33742] - Staining of human stomach shows no cytoplasmic positivity in glandular cells as expected.



Immunohistochemistry-Paraffin: Involucrin Antibody [NBP2-33742] - Staining of human tonsil shows moderate to strong cytoplasmic positivity in squamous epithelial cells.



Simple Western: Involucrin Antibody [NBP2-33742] - Analysis in human HaCaT cells. 200 ug/mL protein concentration and 1/50 antibody dilution. Simple Western image submitted by a verified customer review.





### **Novus Biologicals USA**

10730 E. Briarwood Avenue  
Centennial, CO 80112  
USA  
Phone: 303.730.1950  
Toll Free: 1.888.506.6887  
Fax: 303.730.1966  
nb-customerservice@bio-techne.com

### **Bio-Techne Canada**

21 Canmotor Ave  
Toronto, ON M8Z 4E6  
Canada  
Phone: 905.827.6400  
Toll Free: 855.668.8722  
Fax: 905.827.6402  
canada.inquires@bio-techne.com

### **Bio-Techne Ltd**

19 Barton Lane  
Abingdon Science Park  
Abingdon, OX14 3NB, United Kingdom  
Phone: (44) (0) 1235 529449  
Free Phone: 0800 37 34 15  
Fax: (44) (0) 1235 533420  
info.EMEA@bio-techne.com

### **General Contact Information**

www.novusbio.com  
Technical Support: nb-technical@bio-techne.com  
Orders: nb-customerservice@bio-techne.com  
General: novus@novusbio.com

### **Products Related to NBP2-33742**

---

|               |   |
|---------------|---|
| NBP2-33742PEP | Involucrin Recombinant Protein Antigen              |
| HAF008        | Goat anti-Rabbit IgG Secondary Antibody [HRP]       |
| NB7160        | Goat anti-Rabbit IgG (H+L) Secondary Antibody [HRP] |
| NBP2-24891    | Rabbit IgG Isotype Control                          |

---

### **Limitations**

This product is for research use only and is not approved for use in humans or in clinical diagnosis. Primary Antibodies are guaranteed for 1 year from date of receipt.

For more information on our 100% guarantee, please visit [www.novusbio.com/guarantee](http://www.novusbio.com/guarantee)

Earn gift cards/discounts by submitting a review: [www.novusbio.com/reviews/submit/NBP2-33742](http://www.novusbio.com/reviews/submit/NBP2-33742)

Earn gift cards/discounts by submitting a publication using this product:  
[www.novusbio.com/publications](http://www.novusbio.com/publications)

