

Product Datasheet

Calreticulin-2/CALR3 Antibody - BSA Free NBP2-33524

Unit Size: 0.1 ml

Store at 4C short term. Aliquot and store at -20C long term. Avoid freeze-thaw cycles.

www.novusbio.com



technical@novusbio.com

Publications: 2

Protocols, Publications, Related Products, Reviews, Research Tools and Images at:
www.novusbio.com/NBP2-33524

Updated 12/2/2025 v.20.1

Earn rewards for product
reviews and publications.

Submit a publication at www.novusbio.com/publications

Submit a review at www.novusbio.com/reviews/destination/NBP2-33524



NBP2-33524

Calreticulin-2/CALR3 Antibody - BSA Free

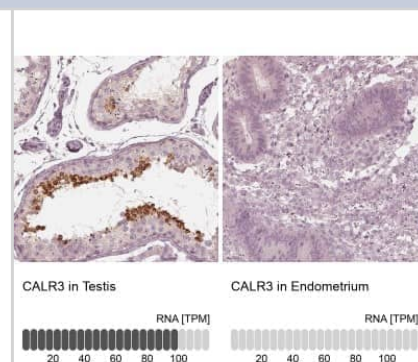
Product Information	
Unit Size	0.1 ml
Concentration	Concentrations vary lot to lot. See vial label for concentration. If unlisted please contact technical services.
Storage	Store at 4C short term. Aliquot and store at -20C long term. Avoid freeze-thaw cycles.
Clonality	Polyclonal
Preservative	0.02% Sodium Azide
Isotype	IgG
Purity	Affinity purified
Buffer	PBS (pH 7.2) and 40% Glycerol

Product Description	
Description	Novus Biologicals Rabbit Calreticulin-2/CALR3 Antibody - BSA Free (NBP2-33524) is a polyclonal antibody validated for use in IHC and WB. Anti-Calreticulin-2/CALR3 Antibody: Cited in 2 publications. All Novus Biologicals antibodies are covered by our 100% guarantee.
Host	Rabbit
Gene ID	125972
Gene Symbol	CALR3
Species	Human
Immunogen	This antibody was developed against a recombinant protein corresponding to amino acids: SIEYDWNLTSLKKETSPAESKDWEQTKDNKAQDWEKHFLDASTSKQSDWNGD LDGDWPAPMLQKPPYQDGLKPEGIHKGVWLHRKMKNTDYLTQYDLSEF

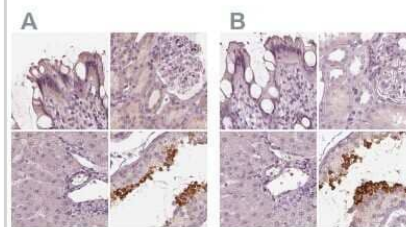
Product Application Details	
Applications	Western Blot, Immunohistochemistry-Paraffin, Immunohistochemistry
Recommended Dilutions	Western Blot 0.04 - 0.4 ug/ml, Immunohistochemistry 1:1000 - 1:2500, Immunohistochemistry-Paraffin 1:1000 - 1:2500
Application Notes	For IHC-Paraffin, HIER pH 6 retrieval is recommended.

Images

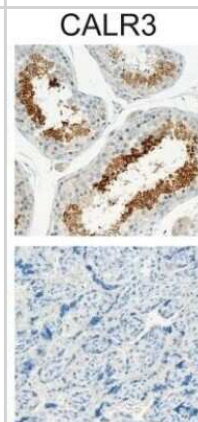
Immunohistochemistry-Paraffin: Calreticulin-2/CALR3 Antibody [NBP2-33524] - Staining in human testis and endometrium tissues using anti-CALR3 antibody. Corresponding CALR3 RNA-seq data are presented for the same tissues.



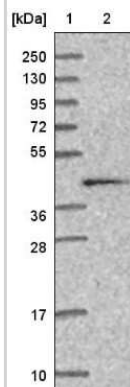
Immunohistochemistry-Paraffin: Calreticulin-2/CALR3 Antibody [NBP2-33524] - Staining of human colon, kidney, liver and testis using Anti-CALR3 antibody NBP2-33524 (A) shows similar protein distribution across tissues to independent antibody NBP2-33390 (B).



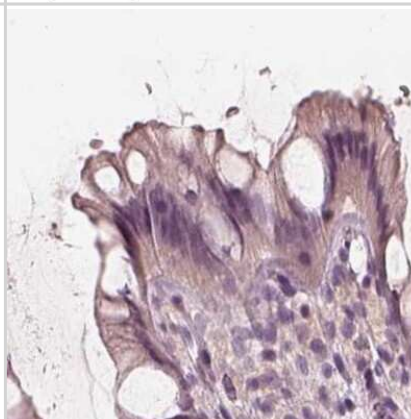
Immunohistochemistry-Paraffin: Calreticulin-2/CALR3 Antibody [NBP2-33524] - Immunohistochemical staining of CT antigens in normal tissues. Among 22 normal tissues (see materials and methods), ADAM2, CALR3 (shown in image), SAGE1 and MAGE-A proteins were only detected in the germ cells of the testis. More specifically, SAGE-1 and MAGE-A were found in spermatogonia, while ADAM2 and CALR3 were present in post-meiotic germ cells. Only MAGE-A proteins were detected in placenta (all pictures magnification x20). Image collected and cropped by CiteAb from the following publication (<https://dx.plos.org/10.1371/journal.pone.0134967>), licensed under a CC-BY license.



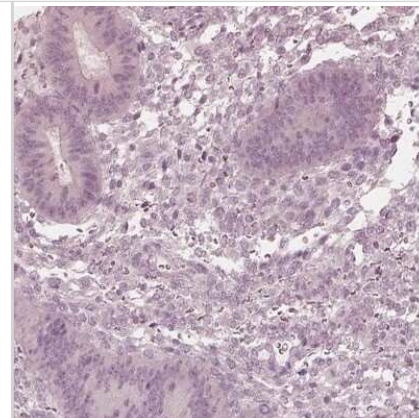
Western Blot: Calreticulin-2/CALR3 Antibody [NBP2-33524] - Lane 1: Marker [kDa] 250, 130, 95, 72, 55, 36, 28, 17, 10. Lane 2: Human cell line RT-4



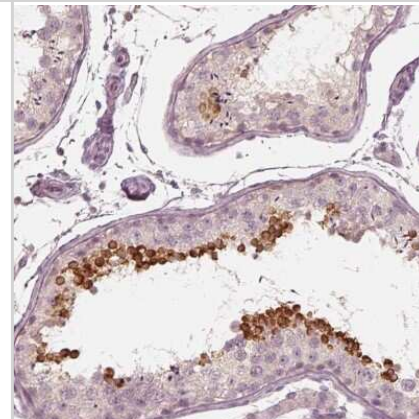
Immunohistochemistry-Paraffin: Calreticulin-2/CALR3 Antibody [NBP2-33524] - Staining of human colon.



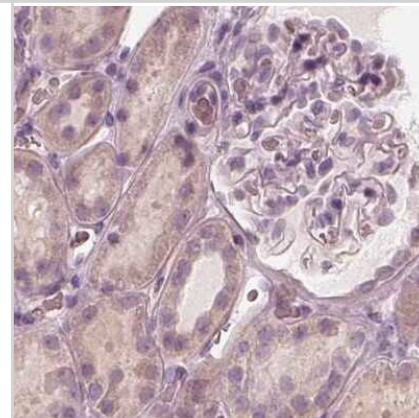
Immunohistochemistry-Paraffin: Calreticulin-2/CALR3 Antibody [NBP2-33524] - Staining of human endometrium shows low expression as expected.



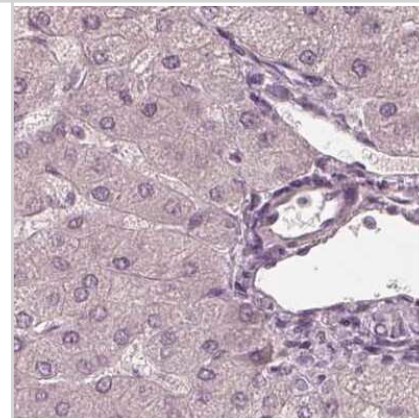
Immunohistochemistry-Paraffin: Calreticulin-2/CALR3 Antibody [NBP2-33524] - Staining of human testis shows high expression.



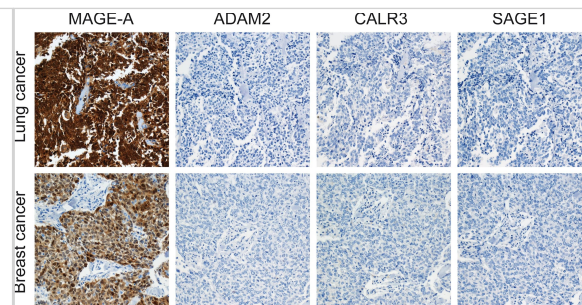
Immunohistochemistry-Paraffin: Calreticulin-2/CALR3 Antibody [NBP2-33524] - Staining of human kidney.



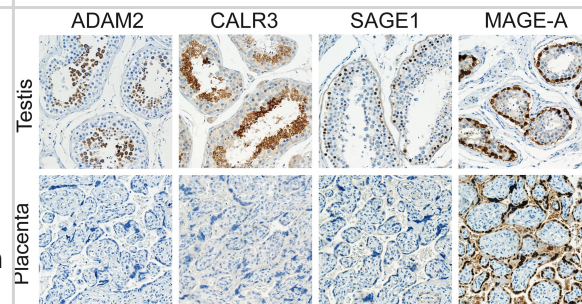
Immunohistochemistry-Paraffin: Calreticulin-2/CALR3 Antibody [NBP2-33524] - Staining of human liver.



Immunohistochemistry: Calreticulin-2/CALR3 Antibody [NBP2-33524] - Immunohistochemical staining of CT antigens in lung & breast cancer tumors. Examples of lung & breast cancer tumors positive for MAGE-A & negative for ADAM2, CALR3 & SAGE1 (all pictures magnification x20). Image collected & cropped by CiteAb from the following publication (<https://dx.plos.org/10.1371/journal.pone.0134967>), licensed under a CC-BY license. Not internally tested by Novus Biologicals.



Immunohistochemistry: Calreticulin-2/CALR3 Antibody [NBP2-33524] - Immunohistochemical staining of CT antigens in normal tissues. Among 22 normal tissues (see materials & methods), ADAM2, CALR3, SAGE1 & MAGE-A proteins were only detected in the germ cells of the testis. More specifically, SAGE-1 & MAGE-A were found in spermatogonia, while ADAM2 & CALR3 were present in post-meiotic germ cells. Only MAGE-A proteins were detected in placenta (all pictures magnification x20). Image collected & cropped by CiteAb from the following publication (<https://dx.plos.org/10.1371/journal.pone.0134967>), licensed under a CC-BY license. Not internally tested by Novus Biologicals.



Publications

Verhagen J. M. A, Veldman J. H, et al. Lack of evidence for a causal role of CALR3 in monogenic cardiomyopathy. *Eur J Hum Genet* 2018-11-01 [PMID: 29988065] (Immunohistochemistry-Paraffin, Human)

Maheswaran E, Pedersen CB, Ditzel HJ, Gjerstorff MF. Lack of ADAM2, CALR3 and SAGE1 Cancer/Testis Antigen Expression in Lung and Breast Cancer. *PLoS One* 2015-01-01 [PMID: 26252478] (IHC-P, Human)



Novus Biologicals USA

10730 E. Briarwood Avenue
Centennial, CO 80112
USA
Phone: 303.730.1950
Toll Free: 1.888.506.6887
Fax: 303.730.1966
nb-customerservice@bio-techne.com

Bio-Techne Canada

21 Canmotor Ave
Toronto, ON M8Z 4E6
Canada
Phone: 905.827.6400
Toll Free: 855.668.8722
Fax: 905.827.6402
canada.inquires@bio-techne.com

Bio-Techne Ltd

19 Barton Lane
Abingdon Science Park
Abingdon, OX14 3NB, United Kingdom
Phone: (44) (0) 1235 529449
Free Phone: 0800 37 34 15
Fax: (44) (0) 1235 533420
info.EMEA@bio-techne.com

General Contact Information

www.novusbio.com
Technical Support: nb-technical@bio-techne.com
Orders: nb-customerservice@bio-techne.com
General: novus@novusbio.com

Products Related to NBP2-33524

NBP2-33524PEP	Calreticulin-2/CALR3 Recombinant Protein Antigen
NBP2-33376H	Blue Marker Antibody (6F4-F6) [HRP]
HAF008	Goat anti-Rabbit IgG Secondary Antibody [HRP]
NB7160	Goat anti-Rabbit IgG (H+L) Secondary Antibody [HRP]
NBP2-24891	Rabbit IgG Isotype Control

Limitations

This product is for research use only and is not approved for use in humans or in clinical diagnosis. Primary Antibodies are guaranteed for 1 year from date of receipt.

For more information on our 100% guarantee, please visit www.novusbio.com/guarantee

Earn gift cards/discounts by submitting a review: www.novusbio.com/reviews/submit/NBP2-33524

Earn gift cards/discounts by submitting a publication using this product:
www.novusbio.com/publications

