

# Product Datasheet

## Cytokeratin, pan Antibody (AE-1/AE-3) [Biotin] NBP2-33200B

Unit Size: 0.1 ml

Store at 4C in the dark.

[www.novusbio.com](http://www.novusbio.com)



[technical@novusbio.com](mailto:technical@novusbio.com)

**Reviews: 1 Publications: 1**

Protocols, Publications, Related Products, Reviews, Research Tools and Images at:  
[www.novusbio.com/NBP2-33200B](http://www.novusbio.com/NBP2-33200B)

Updated 10/23/2024 v.20.1

**Earn rewards for product  
reviews and publications.**

Submit a publication at [www.novusbio.com/publications](http://www.novusbio.com/publications)

Submit a review at [www.novusbio.com/reviews/destination/NBP2-33200B](http://www.novusbio.com/reviews/destination/NBP2-33200B)



**NBP2-33200B**

Cytokeratin, pan Antibody (AE-1/AE-3) [Biotin]

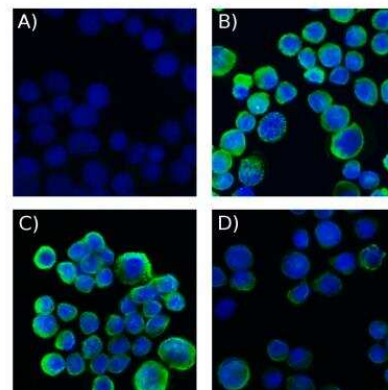
<b>Product Information</b>	
<b>Unit Size</b>	0.1 ml
<b>Concentration</b>	Please see the vial label for concentration. If unlisted please contact technical services.
<b>Storage</b>	Store at 4C in the dark.
<b>Clonality</b>	Monoclonal
<b>Clone</b>	AE-1/AE-3
<b>Preservative</b>	0.05% Sodium Azide
<b>Isotype</b>	IgG1 Kappa/IgG1 Kappa
<b>Conjugate</b>	Biotin
<b>Purity</b>	Protein A or G purified
<b>Buffer</b>	PBS
<b>Product Description</b>	
<b>Description</b>	This conjugate is made on demand. Actual recovery may vary from the stated volume of this product. The volume will be greater than or equal to the unit size stated on the datasheet.
<b>Host</b>	Mouse
<b>Gene ID</b>	3848
<b>Gene Symbol</b>	KRT1
<b>Species</b>	Human, Mouse, Rat, Bovine, Canine, Chicken, Monkey, Rabbit, Reptile, Zebrafish
<b>Reactivity Notes</b>	Reptile reactivity reported in scientific literature (PMID: 11351328). Zebrafish reactivity reported in scientific literature (PMID: 30970016).
<b>Marker</b>	Epithelial marker
<b>Specificity/Sensitivity</b>	Twenty human keratins are resolved with two-dimensional gel electrophoresis into acidic (pI 6.0) subfamilies. This antibody cocktail recognizes acidic (Type I or LMW) and basic (Type II or HMW) cytokeratins, which 67kDa (CK1); 64kDa (CK3); 59kDa (CK4); 58kDa (CK5); 56kDa (CK6); 52kDa (CK8); 56.5kDa (CK10); 50kDa (CK14); 50kDa (CK15); 48kDa (CK16); 40kDa (CK19). Many studies have shown the usefulness of keratins as markers in cancer research and tumor diagnosis. AE-1/AE-3 is a broad spectrum anti pan-cytokeratin antibody cocktail, which differentiates epithelial tumors from non-epithelial tumors e.g. squamous vs. adenocarcinoma of the lung, liver carcinoma, breast cancer, and esophageal cancer. It has been used to characterize the source of various neoplasms and to study the distribution of cytokeratin containing cells in epithelia during normal development and during the development of epithelial neoplasms. This antibody stains cytokeratins present in normal and abnormal human tissues and has shown high sensitivity in the recognition of epithelial cells and carcinomas.
<b>Immunogen</b>	Human epidermal keratin
<b>Product Application Details</b>	
<b>Applications</b>	Western Blot, Flow Cytometry, Flow (Intracellular), Immunocytochemistry/Immunofluorescence, Immunohistochemistry, Immunohistochemistry-Frozen, Immunohistochemistry-Paraffin, CyTOF-ready, Dual RNAscope ISH-IHC, Single Cell Western



<b>Recommended Dilutions</b>	Western Blot, Flow Cytometry, Immunohistochemistry, Immunocytochemistry/Immunofluorescence, Immunohistochemistry-Paraffin, Immunohistochemistry-Frozen, Flow (Intracellular), CyTOF-ready, Single Cell Western, Dual RNAscope ISH-IHC
<b>Application Notes</b>	Optimal dilution of this antibody should be experimentally determined.

## Images

MCF-7 cells stained with Biotin conjugated pan Cytokeratin antibody and SAV-A488. A) SAV-A488 only at a dilution of 1:500, B) pan CK at a dilution of 1:200, C) pan CK at a dilution of 1:400, D) pan CK at a dilution of 1:800. Image from verified customer review.



## Publications

Wei CH, Huang L, Kreh B et al. A novel retinoic acid receptor- $\gamma$  agonist antagonizes immune checkpoint resistance in lung cancers by altering the tumor immune microenvironment Sci Rep 2023-09-09 [PMID: 37689790]



### **Novus Biologicals USA**

10730 E. Briarwood Avenue  
Centennial, CO 80112  
USA  
Phone: 303.730.1950  
Toll Free: 1.888.506.6887  
Fax: 303.730.1966  
nb-customerservice@bio-techne.com

### **Bio-Techne Canada**

21 Canmotor Ave  
Toronto, ON M8Z 4E6  
Canada  
Phone: 905.827.6400  
Toll Free: 855.668.8722  
Fax: 905.827.6402  
canada.inquires@bio-techne.com

### **Bio-Techne Ltd**

19 Barton Lane  
Abingdon Science Park  
Abingdon, OX14 3NB, United Kingdom  
Phone: (44) (0) 1235 529449  
Free Phone: 0800 37 34 15  
Fax: (44) (0) 1235 533420  
info.EMEA@bio-techne.com

### **General Contact Information**

www.novusbio.com  
Technical Support: nb-technical@bio-techne.com  
Orders: nb-customerservice@bio-techne.com  
General: novus@novusbio.com

### **Products Related to NBP2-33200B**

---

NBP2-29370	Streptavidin Native Protein
DNST0	Endostatin [HRP]
MAB1455	Albumin Antibody (188835) [Unconjugated] - Serum
NB100-687	Cytokeratin 19 Antibody - BSA Free

---

### **Limitations**

This product is for research use only and is not approved for use in humans or in clinical diagnosis. Primary Antibodies are guaranteed for 1 year from date of receipt.

For more information on our 100% guarantee, please visit [www.novusbio.com/guarantee](http://www.novusbio.com/guarantee)

Earn gift cards/discounts by submitting a review: [www.novusbio.com/reviews/submit/NBP2-33200B](http://www.novusbio.com/reviews/submit/NBP2-33200B)

Earn gift cards/discounts by submitting a publication using this product:  
[www.novusbio.com/publications](http://www.novusbio.com/publications)

