

Product Datasheet

CD68/SR-D1 Antibody (C68/684)

NBP2-32832-0.1mg

Unit Size: 0.1 mg

Store at 4C.

www.novusbio.com



technical@novusbio.com

Protocols, Publications, Related Products, Reviews, Research Tools and Images at:
www.novusbio.com/NBP2-32832

Updated 10/23/2024 v.20.1

Earn rewards for product reviews and publications.

Submit a publication at www.novusbio.com/publications

Submit a review at www.novusbio.com/reviews/destination/NBP2-32832



NBP2-32832-0.1mg

CD68/SR-D1 Antibody (C68/684)

Product Information	
Unit Size	0.1 mg
Concentration	0.2 mg/ml
Storage	Store at 4C.
Clonality	Monoclonal
Clone	C68/684
Preservative	0.05% Sodium Azide
Isotype	IgG1 Kappa
Purity	Protein A or G purified
Buffer	10 mM PBS with 0.05% BSA
Target Molecular Weight	110 kDa

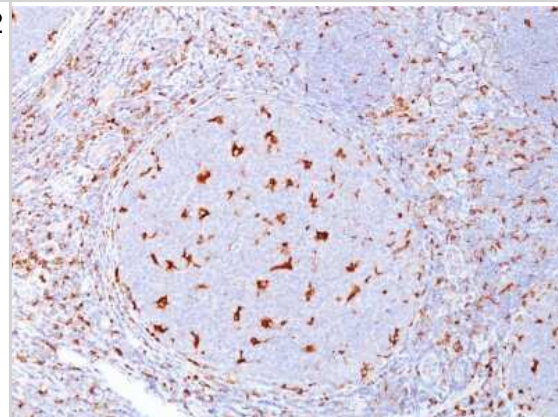
Product Description	
Description	200ug/ml of antibody purified from Bioreactor Concentrate by Protein A or G. Prepared in 10 mM PBS with 0.05% BSA & 0.05% azide. Also available WITHOUT BSA & azide at 1.0 mg/ml. (NBP2-34587) Antibody with azide - store at 2 to 8C. Antibody without azide - store at -20 to -80C.
Host	Mouse
Gene ID	968
Gene Symbol	CD68
Species	Human, Mouse, Rat, Monkey
Marker	Macrophage Marker
Specificity/Sensitivity	This antibody recognizes a glycoprotein of 110kDa, which is identified as CD68. It is important for identifying macrophages in tissue sections. It stains macrophages in a wide variety of human tissues, including Kupffer cells and macrophages in the red pulp of the spleen, in lamina propria of the gut, in lung alveoli, and in bone marrow. It reacts with myeloid precursors and peripheral blood granulocytes. It also reacts with plasmacytoid T cells, which are supposed to be of monocyte/macrophage origin. It shows strong granular cytoplasmic staining of chronic and acute myeloid leukemia and also reacts with rare cases of true histiocyticneoplasia. Lymphomas are negative or show few granules.
Immunogen	Recombinant human CD68/SR-D1 protein (Uniprot: P34810)

Product Application Details	
Applications	Western Blot, Flow Cytometry, Flow (Intracellular), Immunocytochemistry/ Immunofluorescence, Immunohistochemistry, Immunohistochemistry-Paraffin
Recommended Dilutions	Western Blot 1-2 ug/ml, Flow Cytometry 1-2 ug/million cells, Immunohistochemistry, Immunocytochemistry/ Immunofluorescence 1-2 ug/ml, Immunohistochemistry-Paraffin 1-2 ug/ml, Flow (Intracellular)
Application Notes	Immunohistochemistry (Formalin-fixed): 1-2ug/ml for 30 minutes at RT. Staining of formalin-fixed tissues requires heating tissue sections in 10mM Tris with 1mM EDTA, pH 9.0, for 45 min at 95C followed by cooling at RT for 20 minutes. Optimal dilution for a specific application should be determined.

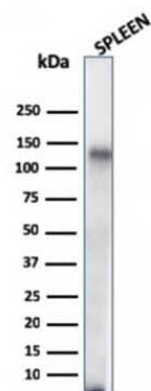


Images

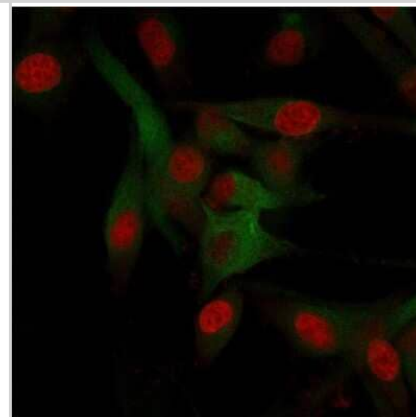
Immunohistochemistry-Paraffin: CD68/SR-D1 Antibody (C68/684) [NBP2-32832] - Formalin-fixed, paraffin-embedded human Tonsil stained with .



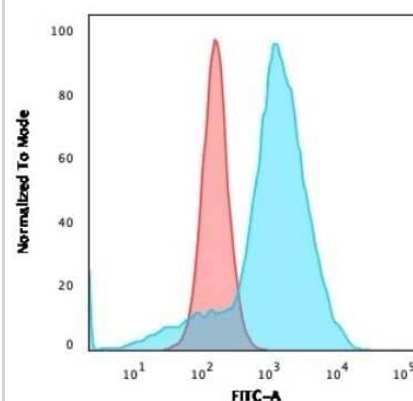
Western Blot: CD68/SR-D1 Antibody (C68/684) [NBP2-32832] - Western Blot Analysis of human Spleen tissue lysate using CD68/SR-D1 Antibody (C68/684).



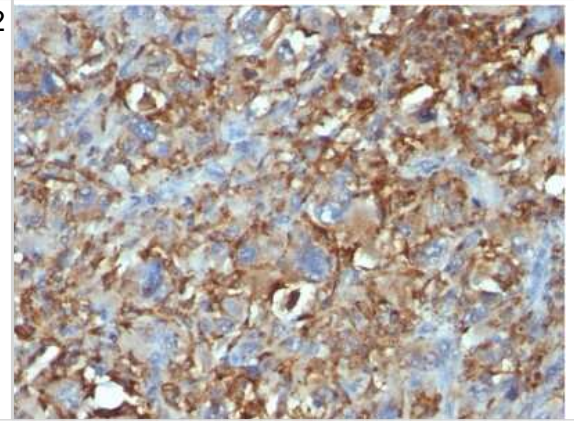
Immunocytochemistry/Immunofluorescence: CD68/SR-D1 Antibody (C68/684) [NBP2-32832] - Immunofluorescence staining of U87MG cells using CD68/SR-D1 Antibody (C68/684) followed by goat anti-Mouse IgG conjugated to CF488 (green). Nuclei are stained with Red Dot



Flow Cytometry: CD68/SR-D1 Antibody (C68/684) [NBP2-32832] - Flow Cytometric Analysis of U87MG cells using CD68/SR-D1 Antibody (C68/684).followed by goat anti-Mouse IgG-CF488 (Blue); Isotype Control (Red).



Immunohistochemistry-Paraffin: CD68/SR-D1 Antibody (C68/684) [NBP2-32832] - Formalin-fixed, paraffin-embedded human Histiocytoma stained with CD68/SR-D1 Antibody (C68/684).





Novus Biologicals USA

10730 E. Briarwood Avenue
Centennial, CO 80112
USA
Phone: 303.730.1950
Toll Free: 1.888.506.6887
Fax: 303.730.1966
nb-customerservice@bio-techne.com

Bio-Techne Canada

21 Canmotor Ave
Toronto, ON M8Z 4E6
Canada
Phone: 905.827.6400
Toll Free: 855.668.8722
Fax: 905.827.6402
canada.inquires@bio-techne.com

Bio-Techne Ltd

19 Barton Lane
Abingdon Science Park
Abingdon, OX14 3NB, United Kingdom
Phone: (44) (0) 1235 529449
Free Phone: 0800 37 34 15
Fax: (44) (0) 1235 533420
info.EMEA@bio-techne.com

General Contact Information

www.novusbio.com
Technical Support: nb-technical@bio-techne.com
Orders: nb-customerservice@bio-techne.com
General: novus@novusbio.com

Products Related to NBP2-32832-0.1mg

HAF007	Goat anti-Mouse IgG Secondary Antibody [HRP]
NB720-B	Rabbit anti-Mouse IgG (H+L) Secondary Antibody [Biotin]
NBP1-43319-0.5mg	Mouse IgG1 Kappa Isotype Control (P3.6.2.8.1)
NBP2-22756	Recombinant Human CD68/SR-D1 His Protein

Limitations

This product is for research use only and is not approved for use in humans or in clinical diagnosis. Primary Antibodies are guaranteed for 1 year from date of receipt.

For more information on our 100% guarantee, please visit www.novusbio.com/guarantee

Earn gift cards/discounts by submitting a review: www.novusbio.com/reviews/submit/NBP2-32832

Earn gift cards/discounts by submitting a publication using this product:
www.novusbio.com/publications

