

Product Datasheet

RHCG Antibody - BSA Free

NBP2-30825

Unit Size: 0.1 ml

Store at 4C short term. Aliquot and store at -20C long term. Avoid freeze-thaw cycles.

www.novusbio.com



technical@novusbio.com

Protocols, Publications, Related Products, Reviews, Research Tools and Images at:
www.novusbio.com/NBP2-30825

Updated 12/2/2025 v.20.1

Earn rewards for product
reviews and publications.

Submit a publication at www.novusbio.com/publications

Submit a review at www.novusbio.com/reviews/destination/NBP2-30825



NBP2-30825

RHCG Antibody - BSA Free

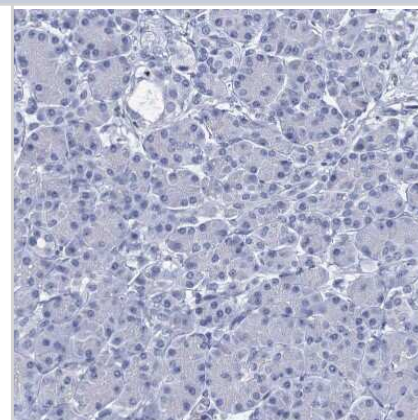
Product Information	
Unit Size	0.1 ml
Concentration	Concentrations vary lot to lot. See vial label for concentration. If unlisted please contact technical services.
Storage	Store at 4C short term. Aliquot and store at -20C long term. Avoid freeze-thaw cycles.
Clonality	Polyclonal
Preservative	0.02% Sodium Azide
Isotype	IgG
Purity	Affinity purified
Buffer	PBS (pH 7.2) and 40% Glycerol

Product Description	
Description	Novus Biologicals Rabbit RHCG Antibody - BSA Free (NBP2-30825) is a polyclonal antibody validated for use in IHC. All Novus Biologicals antibodies are covered by our 100% guarantee.
Host	Rabbit
Gene ID	51458
Gene Symbol	RHCG
Species	Human
Immunogen	This antibody was developed against a recombinant protein corresponding to amino acids: LPFWGQPSDENC FEDAVYWEMPEGNSTVYIPEDPTFKPSGSPVPSVPMVSPL PMASSV

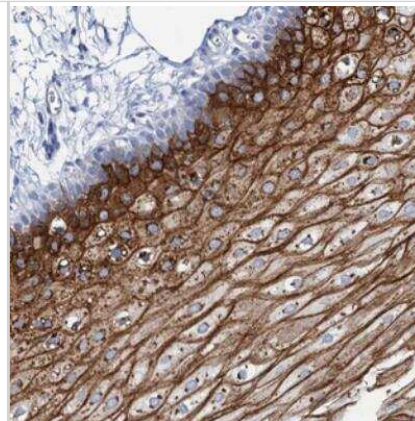
Product Application Details	
Applications	Immunohistochemistry-Paraffin, Immunohistochemistry
Recommended Dilutions	Immunohistochemistry 1:50 - 1:200, Immunohistochemistry-Paraffin 1:50 - 1:200
Application Notes	For IHC-Paraffin, HIER pH 6 retrieval is recommended.

Images

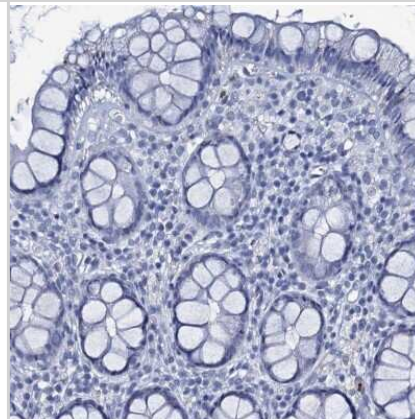
Immunohistochemistry-Paraffin: RHCG Antibody [NBP2-30825] - Staining of human Pancreas shows no membranous positivity in exocrine glandular cells as expected.



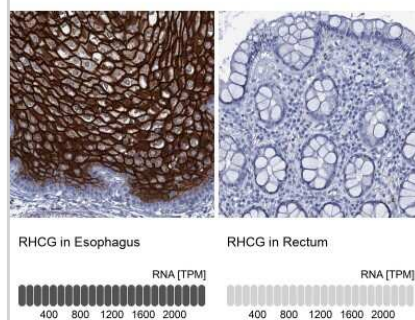
Immunohistochemistry: RHCG Antibody [NBP2-30825] - Staining of human oral mucosa shows strong membranous and cytoplasmic positivity in superficial squamous epithelial cells.



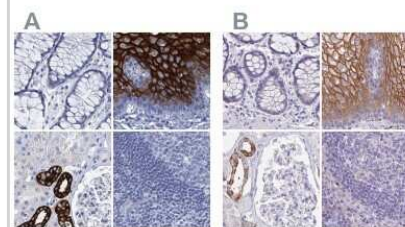
Immunohistochemistry-Paraffin: RHCG Antibody [NBP2-30825] - Staining of human rectum shows low expression as expected.



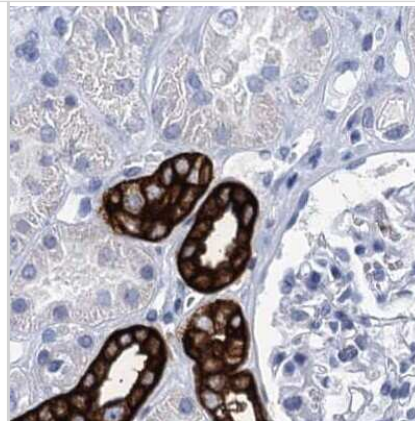
Immunohistochemistry-Paraffin: RHCG Antibody [NBP2-30825] - Staining in human esophagus and rectum tissues using anti-RHCG antibody. Corresponding RHCG RNA-seq data are presented for the same tissues.



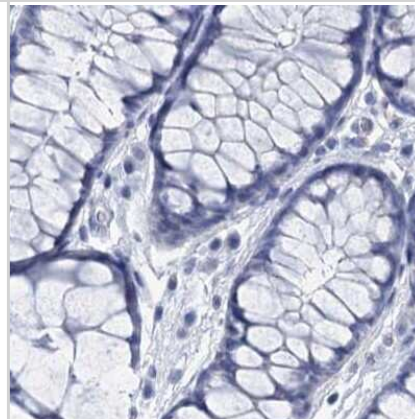
Immunohistochemistry-Paraffin: RHCG Antibody [NBP2-30825] - Staining of human colon, esophagus, kidney and lymph node using Anti-RHCG antibody NBP2-30825 (A) shows similar protein distribution across tissues to independent antibody NBP2-30905 (B).



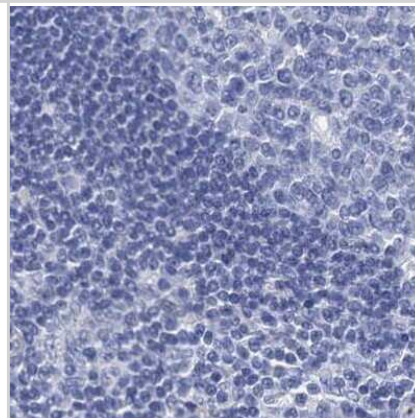
Immunohistochemistry-Paraffin: RHCG Antibody [NBP2-30825] - Staining of human kidney.



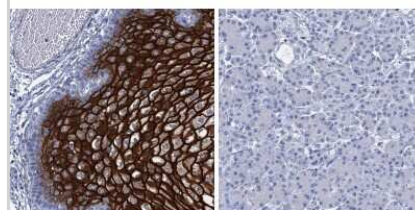
Immunohistochemistry-Paraffin: RHCG Antibody [NBP2-30825] - Staining of human colon.



Immunohistochemistry-Paraffin: RHCG Antibody [NBP2-30825] - Staining of human lymph node.

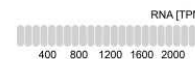
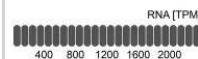


Immunohistochemistry-Paraffin: RHCG Antibody [NBP2-30825] - Analysis in human esophagus and pancreas tissues using NBP2-30825 antibody. Corresponding RHCG RNA-seq data are presented for the same tissues.

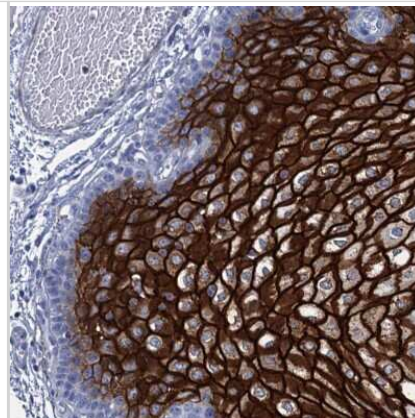


RHCG in Esophagus

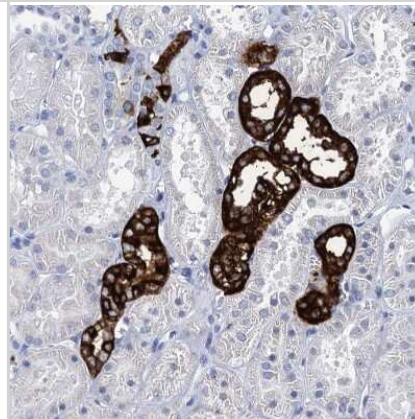
RHCG in Pancreas



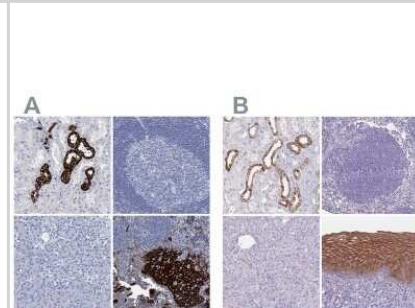
Immunohistochemistry-Paraffin: RHCG Antibody [NBP2-30825] - Staining of human Esophagus shows strong membranous positivity in squamous epithelial cells.



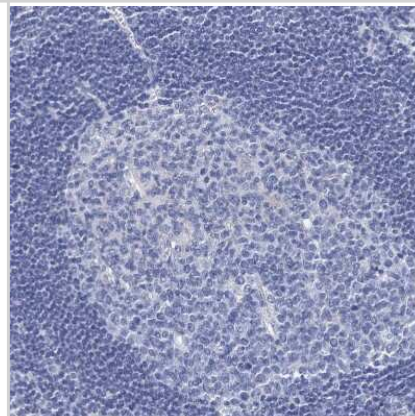
Immunohistochemistry-Paraffin: RHCG Antibody [NBP2-30825] - Staining of human kidney shows strong membranous positivity in cells in distal tubules.



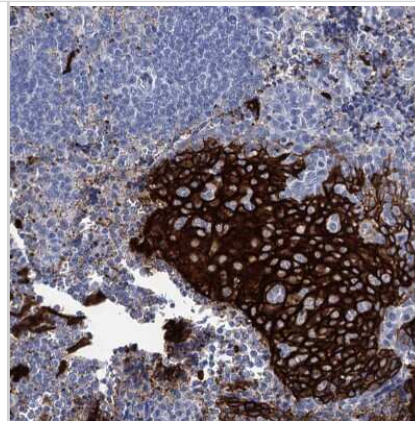
Immunohistochemistry-Paraffin: RHCG Antibody [NBP2-30825] - Staining of human kidney, lymph node, pancreas and squamous epithelia using Anti-RHCG antibody NBP2-30825 (A) shows similar protein distribution across tissues to independent antibody NBP2-30905 (B).



Immunohistochemistry-Paraffin: RHCG Antibody [NBP2-30825] - Staining of human Lymph node shows no membranous positivity in non-germinal center cells as expected.



Immunohistochemistry-Paraffin: RHCG Antibody [NBP2-30825] - Staining of human Tonsil shows strong membranous positivity in squamous epithelial cells.





Novus Biologicals USA

10730 E. Briarwood Avenue
Centennial, CO 80112
USA
Phone: 303.730.1950
Toll Free: 1.888.506.6887
Fax: 303.730.1966
nb-customerservice@bio-techne.com

Bio-Techne Canada

21 Canmotor Ave
Toronto, ON M8Z 4E6
Canada
Phone: 905.827.6400
Toll Free: 855.668.8722
Fax: 905.827.6402
canada.inquires@bio-techne.com

Bio-Techne Ltd

19 Barton Lane
Abingdon Science Park
Abingdon, OX14 3NB, United Kingdom
Phone: (44) (0) 1235 529449
Free Phone: 0800 37 34 15
Fax: (44) (0) 1235 533420
info.EMEA@bio-techne.com

General Contact Information

www.novusbio.com
Technical Support: nb-technical@bio-techne.com
Orders: nb-customerservice@bio-techne.com
General: novus@novusbio.com

Products Related to NBP2-30825

NBP2-30825PEP	RHCG Recombinant Protein Antigen
HAF008	Goat anti-Rabbit IgG Secondary Antibody [HRP]
NB7160	Goat anti-Rabbit IgG (H+L) Secondary Antibody [HRP]
NBP2-24891	Rabbit IgG Isotype Control

Limitations

This product is for research use only and is not approved for use in humans or in clinical diagnosis. Primary Antibodies are guaranteed for 1 year from date of receipt.

For more information on our 100% guarantee, please visit www.novusbio.com/guarantee

Earn gift cards/discounts by submitting a review: www.novusbio.com/reviews/submit/NBP2-30825

Earn gift cards/discounts by submitting a publication using this product:
www.novusbio.com/publications

