

Product Datasheet

ARF1 Antibody NBP2-29906

Unit Size: 100ug

Store at -20C. Avoid freeze-thaw cycles.

www.novusbio.com



technical@novusbio.com

Publications: 2

Protocols, Publications, Related Products, Reviews, Research Tools and Images at:
www.novusbio.com/NBP2-29906

Updated 9/9/2025 v.20.1

Earn rewards for product
reviews and publications.

Submit a publication at www.novusbio.com/publications

Submit a review at www.novusbio.com/reviews/destination/NBP2-29906



NBP2-29906

ARF1 Antibody

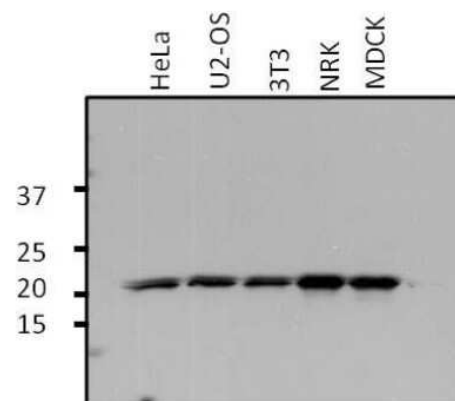
Product Information	
Unit Size	100ug
Concentration	1 mg/ml
Storage	Store at -20C. Avoid freeze-thaw cycles.
Clonality	Polyclonal
Preservative	0.05% Sodium Azide
Isotype	IgG
Purity	Immunogen affinity purified
Buffer	PBS with 1 mg/ml BSA and 30% glycerol

Product Description	
Description	Novus Biologicals Rabbit ARF1 Antibody (NBP2-29906) is a polyclonal antibody validated for use in IHC, WB, ICC/IF and IP. Anti-ARF1 Antibody: Cited in 1 publication. All Novus Biologicals antibodies are covered by our 100% guarantee.
Host	Rabbit
Gene ID	375
Gene Symbol	ARF1
Species	Human, Mouse, Canine
Immunogen	Synthetic peptide DWLSNQLRNQK

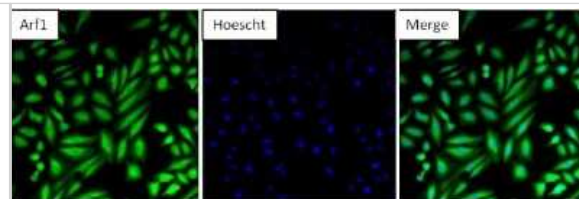
Product Application Details	
Applications	Western Blot, Immunohistochemistry-Paraffin, Immunocytochemistry/ Immunofluorescence, Immunohistochemistry, Immunoprecipitation
Recommended Dilutions	Western Blot 1:1000 - 1:2000, Immunohistochemistry 1:10 - 1:100, Immunocytochemistry/ Immunofluorescence 1:100 - 1:200, Immunoprecipitation 2 ug, Immunohistochemistry-Paraffin 1:10 - 1:100
Application Notes	Successful WB usage in human, mouse, and canine samples. Successful IF and IP usage in human samples.

Images

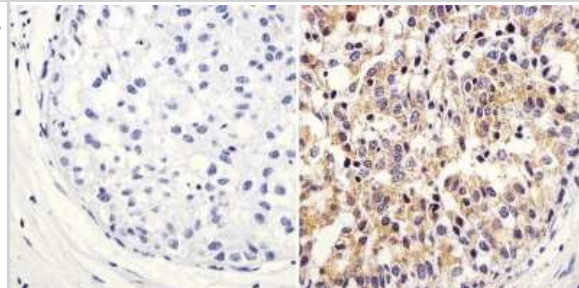
Western Blot: ARF1 Antibody [NBP2-29906] - Analysis of 25ug of various whole cell lysates per well onto a 4-20% Tris-HCl polyacrylamide gel.



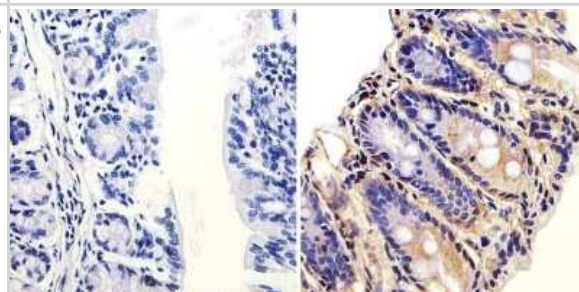
Immunocytochemistry/Immunofluorescence: ARF1 Antibody [NBP2-29906] - Analysis of Arf1 in HeLa cells. Formalin-fixed cells were permeabilized with 0.1% Triton X-100 in TBS for 10 minutes at room temperature and blocked with 5% normal goat serum for 15 minutes at room temperature. Cells were probed with an Arf1 polyclonal antibody at a dilution of 1:100 for at least 1 hour at room temperature, washed with PBS, and incubated with a DyLight 488-conjugated goat anti-rabbit IgG secondary antibody at a dilution of 1:400 for 30 minutes at room temperature. Nuclei (blue) were stained with Hoechst 33342 dye.



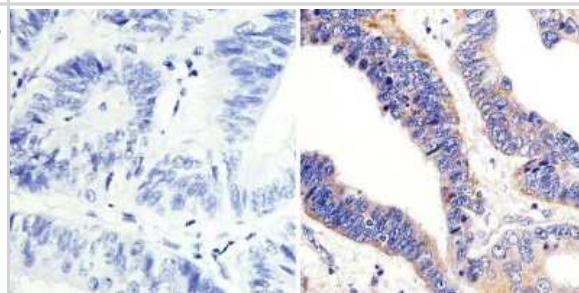
Immunohistochemistry-Paraffin: ARF1 Antibody [NBP2-29906] - Analysis showing staining in the cytoplasm of human breast carcinoma (right) compared to a negative control without primary antibody (left).



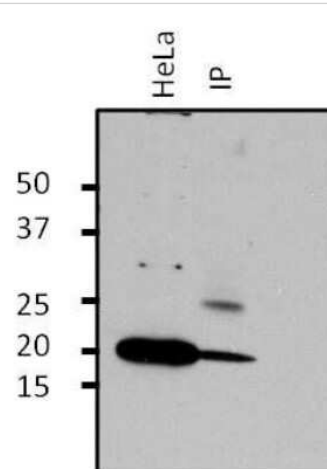
Immunohistochemistry-Paraffin: ARF1 Antibody [NBP2-29906] - Analysis showing staining in the cytoplasm of mouse colon tissue (right) compared to a negative control without primary antibody (left).



Immunohistochemistry-Paraffin: ARF1 Antibody [NBP2-29906] - Analysis of showing staining in the cytoplasm of human colon carcinoma (right) compared to a negative control without primary antibody (left).



Immunoprecipitation: ARF1 Antibody [NBP2-29906] - Analysis of Arf1 was performed on HeLa cells. Antigen-antibody complexes were formed by incubating 500ug of HeLa whole cell lysate with 2ug of an Arf1 polyclonal antibody overnight on a rocking platform at 4C. The immune complexes were captured on 50ul Protein A/G Plus Agarose, washed extensively, and eluted with 5X Lane Marker Reducing Sample Buffer. Samples, including the HeLa cell lysate as a positive control (left lane), were resolved on a 4-20% Tris-HCl polyacrylamide gel, transferred to a nitrocellulose membrane, and blocked with 5% BSA/TBS-0.1%Tween for at least 1 hour. The membrane was probed with a Arf1 polyclonal antibody at a dilution of 1:1000 overnight rotating at 4C, washed in TBST, and probed with Clean-blot IP detection reagent at a dilution of 1:2500 for at least 1 hour. Chemiluminescent detection was performed using SuperSignal West Dura.



Publications

Khalid E Guanine-Nucleotide Binding Proteins, Tyrosine Kinases, and Associated Regulators in the Integrated Control of Basal and GnRH-Dependent Goldfish Pituitary Hormone Secretion Thesis 2023-01-01

Khalid E, Chang JP Small GTPase control of pituitary hormone secretion: Evidence from studies in the goldfish (*Carassius auratus*) neuroendocrine model General and comparative endocrinology 2023-04-13 [PMID: 37060929]



Novus Biologicals USA

10730 E. Briarwood Avenue
Centennial, CO 80112
USA
Phone: 303.730.1950
Toll Free: 1.888.506.6887
Fax: 303.730.1966
nb-customerservice@bio-techne.com

Bio-Techne Canada

21 Canmotor Ave
Toronto, ON M8Z 4E6
Canada
Phone: 905.827.6400
Toll Free: 855.668.8722
Fax: 905.827.6402
canada.inquires@bio-techne.com

Bio-Techne Ltd

19 Barton Lane
Abingdon Science Park
Abingdon, OX14 3NB, United Kingdom
Phone: (44) (0) 1235 529449
Free Phone: 0800 37 34 15
Fax: (44) (0) 1235 533420
info.EMEA@bio-techne.com

General Contact Information

www.novusbio.com
Technical Support: nb-technical@bio-techne.com
Orders: nb-customerservice@bio-techne.com
General: novus@novusbio.com

Products Related to NBP2-29906

NBP2-33376H	Blue Marker Antibody (6F4-F6) [HRP]
HAF008	Goat anti-Rabbit IgG Secondary Antibody [HRP]
NB7160	Goat anti-Rabbit IgG (H+L) Secondary Antibody [HRP]
NBP2-24891	Rabbit IgG Isotype Control

Limitations

This product is for research use only and is not approved for use in humans or in clinical diagnosis. Primary Antibodies are guaranteed for 1 year from date of receipt.

For more information on our 100% guarantee, please visit www.novusbio.com/guarantee

Earn gift cards/discounts by submitting a review: www.novusbio.com/reviews/submit/NBP2-29906

Earn gift cards/discounts by submitting a publication using this product:
www.novusbio.com/publications

