

Product Datasheet

RLBP1L1 Antibody - Azide and BSA Free NBP2-29652

Unit Size: 0.1 ml

Store at -20C. Avoid freeze-thaw cycles.

www.novusbio.com



technical@novusbio.com

Protocols, Publications, Related Products, Reviews, Research Tools and Images at:
www.novusbio.com/NBP2-29652

Updated 9/9/2025 v.20.1

Earn rewards for product
reviews and publications.

Submit a publication at www.novusbio.com/publications

Submit a review at www.novusbio.com/reviews/destination/NBP2-29652



NBP2-29652

RLBP1L1 Antibody - Azide and BSA Free

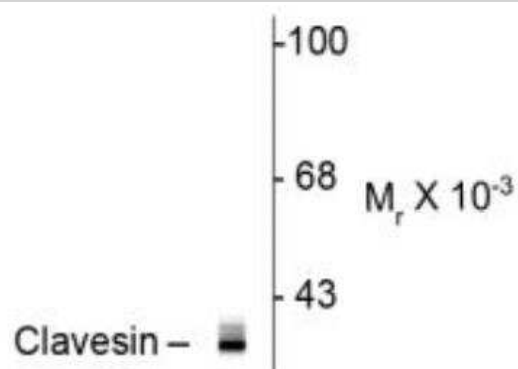
Product Information	
Unit Size	0.1 ml
Concentration	Please see the vial label for concentration. If unlisted please contact technical services.
Storage	Store at -20C. Avoid freeze-thaw cycles.
Clonality	Polyclonal
Preservative	No Preservative
Isotype	IgG
Purity	Affinity purified
Buffer	PBS and 50% Glycerol
Target Molecular Weight	35 kDa

Product Description	
Description	Novus Biologicals Rabbit RLBP1L1 Antibody - Azide and BSA Free (NBP2-29652) is a polyclonal antibody validated for use in WB and ICC/IF. All Novus Biologicals antibodies are covered by our 100% guarantee.
Host	Rabbit
Gene ID	157807
Gene Symbol	CLVS1
Species	Rat
Reactivity Notes	It is anticipated that the antibody will also work in human and mouse as there is 100% homology in these species with the amino acid sequence used as antigen.
Specificity/Sensitivity	Specific for endogenous levels of the ~35 kDa clavesin 1/2 protein doublet. Isoform-specific knock down in cultured hippocampal neurons indicates that the lower and upper bands are clavesin 1 and 2, respectively.
Immunogen	Synthetic peptide corresponding to amino acid residues from the C-terminal region conjugated to KLH. Accession # A6JFQ6
Preparation Method	Prepared from serum by affinity purification using a column to which the peptide antigen was coupled.

Product Application Details	
Applications	Western Blot, Immunocytochemistry/ Immunofluorescence
Recommended Dilutions	Western Blot 1:1000, Immunocytochemistry/ Immunofluorescence 1:50

Images

Western Blot: RLBP1L1 Antibody [NBP2-29652] - rat hippocampal homogenate showing specific immunolabeling of the ~ 35k clavesin protein.





Novus Biologicals USA

10730 E. Briarwood Avenue
Centennial, CO 80112
USA
Phone: 303.730.1950
Toll Free: 1.888.506.6887
Fax: 303.730.1966
nb-customerservice@bio-techne.com

Bio-Techne Canada

21 Canmotor Ave
Toronto, ON M8Z 4E6
Canada
Phone: 905.827.6400
Toll Free: 855.668.8722
Fax: 905.827.6402
canada.inquires@bio-techne.com

Bio-Techne Ltd

19 Barton Lane
Abingdon Science Park
Abingdon, OX14 3NB, United Kingdom
Phone: (44) (0) 1235 529449
Free Phone: 0800 37 34 15
Fax: (44) (0) 1235 533420
info.EMEA@bio-techne.com

General Contact Information

www.novusbio.com
Technical Support: nb-technical@bio-techne.com
Orders: nb-customerservice@bio-techne.com
General: novus@novusbio.com

Products Related to NBP2-29652

NBP2-33376H	Blue Marker Antibody (6F4-F6) [HRP]
HAF008	Goat anti-Rabbit IgG Secondary Antibody [HRP]
NB7160	Goat anti-Rabbit IgG (H+L) Secondary Antibody [HRP]
NBP2-24891	Rabbit IgG Isotype Control

Limitations

This product is for research use only and is not approved for use in humans or in clinical diagnosis. Primary Antibodies are guaranteed for 1 year from date of receipt.

For more information on our 100% guarantee, please visit www.novusbio.com/guarantee

Earn gift cards/discounts by submitting a review: www.novusbio.com/reviews/submit/NBP2-29652

Earn gift cards/discounts by submitting a publication using this product:
www.novusbio.com/publications

