

Product Datasheet

EEF1A2 [p Ser358] Antibody - Azide Free NBP2-29510

Unit Size: 0.1 ml

Store at -20C. Avoid freeze-thaw cycles.

www.novusbio.com



technical@novusbio.com

Protocols, Publications, Related Products, Reviews, Research Tools and Images at:
www.novusbio.com/NBP2-29510

Updated 9/9/2025 v.20.1

Earn rewards for product
reviews and publications.

Submit a publication at www.novusbio.com/publications

Submit a review at www.novusbio.com/reviews/destination/NBP2-29510



NBP2-29510

EEF1A2 [p Ser358] Antibody - Azide Free

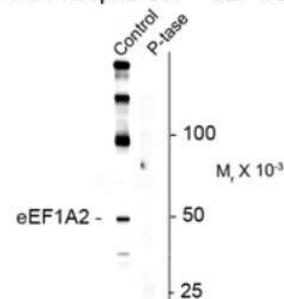
Product Information	
Unit Size	0.1 ml
Concentration	Please see the vial label for concentration. If unlisted please contact technical services.
Storage	Store at -20C. Avoid freeze-thaw cycles.
Clonality	Polyclonal
Preservative	No Preservative
Isotype	IgG
Purity	Antigen Affinity-purified
Buffer	10mM HEPES (pH 7.5), 0.15M NaCl, 0.1 mg/ml BSA and 50% Glycerol
Target Molecular Weight	50 kDa

Product Description	
Description	Novus Biologicals Rabbit EEF1A2 [p Ser358] Antibody - Azide Free (NBP2-29510) is a polyclonal antibody validated for use in WB. All Novus Biologicals antibodies are covered by our 100% guarantee.
Host	Rabbit
Gene ID	1917
Gene Symbol	EEF1A2
Species	Human, Mouse
Specificity/Sensitivity	Specific for endogenous levels of the ~50 kDa eEF1A2 phosphorylated at Ser358. Immunolabeling is completely eliminated by treatment with lambda-phosphatase.
Immunogen	Synthetic phospho-peptide corresponding to amino acid residues surrounding Ser358 conjugated to KLH. Accession # Q05639
Preparation Method	Prepared from rabbit serum by affinity purification via sequential chromatography on phospho- and dephosphopeptide affinity columns.

Product Application Details	
Applications	Western Blot
Recommended Dilutions	Western Blot 1:1000

Images

Western Blot: EEF1A2 [p Ser358] Antibody [NBP2-29510] - Western blot of mouse hippocampus lysate showing specific immunolabeling of the ~50k eEF1A2 protein phosphorylated at Ser358. Immunolabeling is blocked by treatment of the lysate with lambda phosphatase (P-tase).

Anti-Phospho-Ser³⁵⁸ eEF1A2

Western blot of mouse hippocampus lysate showing specific immunolabeling of the ~50k eEF1A2 protein phosphorylated at Ser³⁵⁸. Immunolabeling is blocked by treatment of the lysate with lambda phosphatase (P-tase).



Novus Biologicals USA

10730 E. Briarwood Avenue
Centennial, CO 80112
USA
Phone: 303.730.1950
Toll Free: 1.888.506.6887
Fax: 303.730.1966
nb-customerservice@bio-techne.com

Bio-Techne Canada

21 Canmotor Ave
Toronto, ON M8Z 4E6
Canada
Phone: 905.827.6400
Toll Free: 855.668.8722
Fax: 905.827.6402
canada.inquires@bio-techne.com

Bio-Techne Ltd

19 Barton Lane
Abingdon Science Park
Abingdon, OX14 3NB, United Kingdom
Phone: (44) (0) 1235 529449
Free Phone: 0800 37 34 15
Fax: (44) (0) 1235 533420
info.EMEA@bio-techne.com

General Contact Information

www.novusbio.com
Technical Support: nb-technical@bio-techne.com
Orders: nb-customerservice@bio-techne.com
General: novus@novusbio.com

Products Related to NBP2-29510

NBP2-33376H	Blue Marker Antibody (6F4-F6) [HRP]
HAF008	Goat anti-Rabbit IgG Secondary Antibody [HRP]
NB7160	Goat anti-Rabbit IgG (H+L) Secondary Antibody [HRP]
NBP2-24891	Rabbit IgG Isotype Control

Limitations

This product is for research use only and is not approved for use in humans or in clinical diagnosis. Primary Antibodies are guaranteed for 1 year from date of receipt.

For more information on our 100% guarantee, please visit www.novusbio.com/guarantee

Earn gift cards/discounts by submitting a review: www.novusbio.com/reviews/submit/NBP2-29510

Earn gift cards/discounts by submitting a publication using this product:
www.novusbio.com/publications

