

Product Datasheet

CXCL12/SDF-1 alpha Antibody - Azide and BSA Free NBP2-29480-0.05mg

Unit Size: 0.05 mg

Store at -20C. Avoid freeze-thaw cycles.

www.novusbio.com



technical@novusbio.com

Publications: 5

Protocols, Publications, Related Products, Reviews, Research Tools and Images at:
www.novusbio.com/NBP2-29480

Updated 9/9/2025 v.20.1

Earn rewards for product
reviews and publications.

Submit a publication at www.novusbio.com/publications

Submit a review at www.novusbio.com/reviews/destination/NBP2-29480



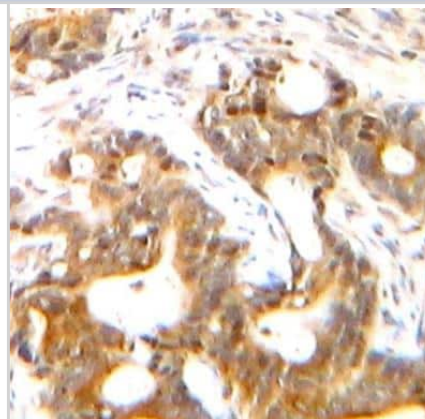
NBP2-29480-0.05mg

CXCL12/SDF-1 alpha Antibody - Azide and BSA Free

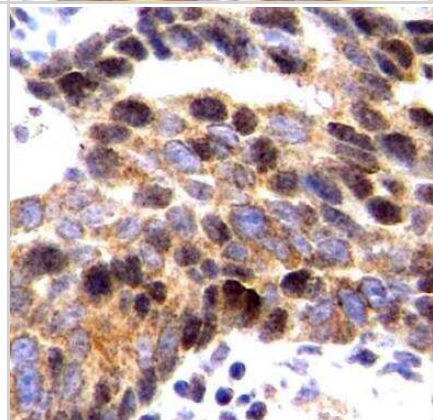
Product Information	
Unit Size	0.05 mg
Concentration	LYOPH mg/ml
Storage	Store at -20C. Avoid freeze-thaw cycles.
Clonality	Polyclonal
Preservative	No Preservative
Reconstitution Instructions	Reconstitute with 0.1 ml distilled water. Add 0.09% Sodium Azide for long term storage.
Isotype	IgG
Purity	Immunogen affinity purified
Buffer	PBS
Product Description	
Description	Novus Biologicals Rabbit CXCL12/SDF-1 alpha Antibody - Azide and BSA Free (NBP2-29480) is a polyclonal antibody validated for use in IHC, WB and ELISA. Anti-CXCL12/SDF-1 alpha Antibody: Cited in 4 publications. All Novus Biologicals antibodies are covered by our 100% guarantee.
Host	Rabbit
Gene ID	6387
Gene Symbol	CXCL12
Species	Human
Specificity/Sensitivity	NBP2-29480 recognises human SDF 1 alpha, otherwise known as CXCL12a, a 68 amino acid stromal cell derived CXC chemokine, which arises from alternative splicing of the SDF 1 gene. The two isoforms, SDF 1 alpha and SDF 1 beta, share an identical amino acid sequence, except for an additional four residues in the C terminal region of the beta isoform.
Immunogen	Recombinant human SDF-1alpha
Product Application Details	
Applications	Western Blot, Immunohistochemistry-Paraffin, ELISA, Functional, Immunohistochemistry
Recommended Dilutions	Western Blot 0.1-0.2ug/ml, ELISA 0.5-2.0ug/ml, Immunohistochemistry, Immunohistochemistry-Paraffin 0.5ug/ml, Functional 2.0-4.0ug/ml
Application Notes	This product requires antigen retrieval using heat treatment prior to staining of paraffin sections. Sodium citrate buffer pH 6.0 is recommended for this purpose. NBP2-29480 may be used under either reducing or non reducing western blotting conditions. Use in Immunohistochemistry reported in scientific literature (PMID: 31116013).

Images

Immunohistochemistry-Paraffin: CXCL12/SDF-1 alpha Antibody [NBP2-29480] - Formalin fixed paraffin embedded tissue section of human colorectal carcinoma stained using SDF-1 alpha antibody (NBP2-29480) with DAB detection. Sodium citrate buffer (pH6.0) based heat mediated antigen retrieval was employed in this IHC-P validation.



Immunohistochemistry-Paraffin: CXCL12/SDF-1 alpha Antibody [NBP2-29480] - Formalin fixed paraffin embedded tissue section of human colorectal carcinoma stained using SDF-1 alpha antibody (NBP2-29480) with DAB detection. Sodium citrate buffer (pH6.0) based heat mediated antigen retrieval was employed in this IHC-P validation.



Publications

Jing R, Chen Y, Xu M et al. Investigating the mechanism of Gentiopicroside in rheumatoid arthritis through network pharmacology, molecular docking, and experimental validation. Scientific reports 2025-06-06 [PMID: 40473698]

Ammar HI, Shamseldeen AM, Shoukry HS et al. Metformin impairs homing ability and efficacy of mesenchymal stem cells for cardiac repair in streptozotocin-induced diabetic cardiomyopathy in rats American journal of physiology. Heart and circulatory physiology 2021-01-29 [PMID: 33513084] (IF/IHC)

Abdelaal NH, Elhefnawy NG, Abdulmonem SR et al. Evaluation of the expression of the stromal cell-derived factor-1 alpha (CXCL 12) in psoriatic patients after treatment with Methotrexate J Cosmet Dermatol 2019-05-22 [PMID: 31116013] (IF/IHC, Human)

Cheng Y, Luo R, Zheng H et al. Synergistic anti-tumor efficacy of sorafenib and fluvastatin in hepatocellular carcinoma. Oncotarget 2017-04-04 [PMID: 28423574] (IHC-P, Human)

Nistala R, Habibi J, Aroor A et al. DPP4 Inhibition attenuates filtration barrier injury and oxidant stress in the Zucker obese rat. Obesity (Silver Spring) 2014-07-04 [PMID: 24995775] (IHC-P, Rat)

Details:

SDF1 alpha antibody used for IHC-P on renal/kidney cortical tissues of Zucker Obese (ZO) and age-matched Zucker Lean (ZL; controls) rats. Figure 1E shows the localization of SDF-1 alpha to the glomeruli/distal tubules and its low expression was found in glomerules in the ZO compared vs ZL controls, a difference which was abolished with DPP4 inhibition in this model.



Novus Biologicals USA

10730 E. Briarwood Avenue
Centennial, CO 80112
USA
Phone: 303.730.1950
Toll Free: 1.888.506.6887
Fax: 303.730.1966
nb-customerservice@bio-techne.com

Bio-Techne Canada

21 Canmotor Ave
Toronto, ON M8Z 4E6
Canada
Phone: 905.827.6400
Toll Free: 855.668.8722
Fax: 905.827.6402
canada.inquires@bio-techne.com

Bio-Techne Ltd

19 Barton Lane
Abingdon Science Park
Abingdon, OX14 3NB, United Kingdom
Phone: (44) (0) 1235 529449
Free Phone: 0800 37 34 15
Fax: (44) (0) 1235 533420
info.EMEA@bio-techne.com

General Contact Information

www.novusbio.com
Technical Support: nb-technical@bio-techne.com
Orders: nb-customerservice@bio-techne.com
General: novus@novusbio.com

Products Related to NBP2-29480-0.05mg

NBP2-33376H	Blue Marker Antibody (6F4-F6) [HRP]
HAF008	Goat anti-Rabbit IgG Secondary Antibody [HRP]
NB7160	Goat anti-Rabbit IgG (H+L) Secondary Antibody [HRP]
NBP2-24891	Rabbit IgG Isotype Control

Limitations

This product is for research use only and is not approved for use in humans or in clinical diagnosis. Primary Antibodies are guaranteed for 1 year from date of receipt.

For more information on our 100% guarantee, please visit www.novusbio.com/guarantee

Earn gift cards/discounts by submitting a review: www.novusbio.com/reviews/submit/NBP2-29480

Earn gift cards/discounts by submitting a publication using this product:
www.novusbio.com/publications

