

Product Datasheet

Leukotriene B4 R1 Antibody

NBP2-27422

Unit Size: 0.1 mg

Store at 4C short term. Aliquot and store at -20C long term. Avoid freeze-thaw cycles.

www.novusbio.com



technical@novusbio.com

Publications: 1

Protocols, Publications, Related Products, Reviews, Research Tools and Images at:
www.novusbio.com/NBP2-27422

Updated 9/9/2025 v.20.1

Earn rewards for product
reviews and publications.

Submit a publication at www.novusbio.com/publications

Submit a review at www.novusbio.com/reviews/destination/NBP2-27422



NBP2-27422

Leukotriene B4 R1 Antibody

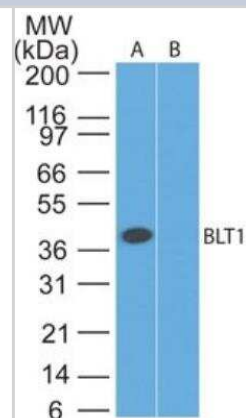
Product Information	
Unit Size	0.1 mg
Concentration	0.5 mg/ml
Storage	Store at 4C short term. Aliquot and store at -20C long term. Avoid freeze-thaw cycles.
Clonality	Polyclonal
Preservative	0.05% Sodium Azide
Isotype	IgG
Purity	Protein A purified
Buffer	PBS and 0.05% BSA

Product Description	
Description	Novus Biologicals Rabbit Leukotriene B4 R1 Antibody (NBP2-27422) is a polyclonal antibody validated for use in IHC, WB and Flow. Anti-Leukotriene B4 R1 Antibody: Cited in 1 publication. All Novus Biologicals antibodies are covered by our 100% guarantee.
Host	Rabbit
Gene ID	1241
Gene Symbol	LTB4R
Species	Human, Primate
Reactivity Notes	The amino acid sequence used as immunogen for this antibody is 100% homologous in White-cheeked Gibbon, and 83% in orangutan.
Immunogen	A portion of amino acids 1-60 from human BLT1 was used as the immunogen for this antibody (1st extracellular domain).

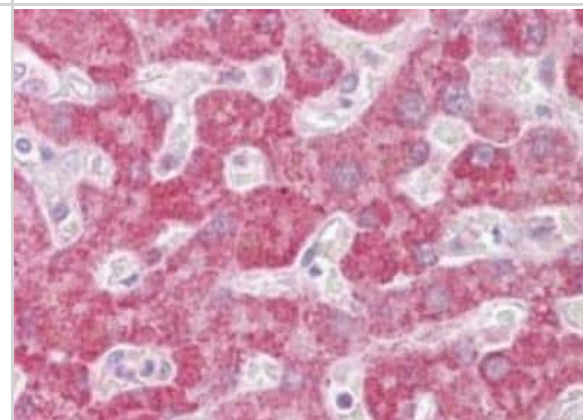
Product Application Details	
Applications	Western Blot, Immunohistochemistry-Paraffin, Flow Cytometry, Immunohistochemistry
Recommended Dilutions	Western Blot 3-5ug/ml~, Flow Cytometry reported in scientific literature (PMID 28763622), Immunohistochemistry, Immunohistochemistry-Paraffin 10ug/ml~

Images

Western Blot: Leukotriene B4 R1 Antibody [NBP2-27422] - Analysis using BLT1 antibody. Lysate from human muscle in the 1) absence, 2) presence of immunizing peptide probed with BLT1 antibody at 3 ug/ml.



Immunohistochemistry-Paraffin: Leukotriene B4 R1 Antibody [NBP2-27422] - Analysis of human liver using BLT1 antibody at 10 ug/ml.



Publications

Chen X, Stout S, Mueller U et al. Label-Free, LC-MS-Based Assays to Quantitate Small-Molecule Antagonist Binding to the Mammalian BLT1 Receptor SLAS Discov 2017-08-01 [PMID: 28763622] (FLOW, Human)



Novus Biologicals USA

10730 E. Briarwood Avenue
Centennial, CO 80112
USA
Phone: 303.730.1950
Toll Free: 1.888.506.6887
Fax: 303.730.1966
nb-customerservice@bio-techne.com

Bio-Techne Canada

21 Canmotor Ave
Toronto, ON M8Z 4E6
Canada
Phone: 905.827.6400
Toll Free: 855.668.8722
Fax: 905.827.6402
canada.inquires@bio-techne.com

Bio-Techne Ltd

19 Barton Lane
Abingdon Science Park
Abingdon, OX14 3NB, United Kingdom
Phone: (44) (0) 1235 529449
Free Phone: 0800 37 34 15
Fax: (44) (0) 1235 533420
info.EMEA@bio-techne.com

General Contact Information

www.novusbio.com
Technical Support: nb-technical@bio-techne.com
Orders: nb-customerservice@bio-techne.com
General: novus@novusbio.com

Products Related to NBP2-27422

NBP2-33376H	Blue Marker Antibody (6F4-F6) [HRP]
HAF008	Goat anti-Rabbit IgG Secondary Antibody [HRP]
NB7160	Goat anti-Rabbit IgG (H+L) Secondary Antibody [HRP]
NBP2-24891	Rabbit IgG Isotype Control

Limitations

This product is for research use only and is not approved for use in humans or in clinical diagnosis. Primary Antibodies are guaranteed for 1 year from date of receipt.

For more information on our 100% guarantee, please visit www.novusbio.com/guarantee

Earn gift cards/discounts by submitting a review: www.novusbio.com/reviews/submit/NBP2-27422

Earn gift cards/discounts by submitting a publication using this product:
www.novusbio.com/publications

